

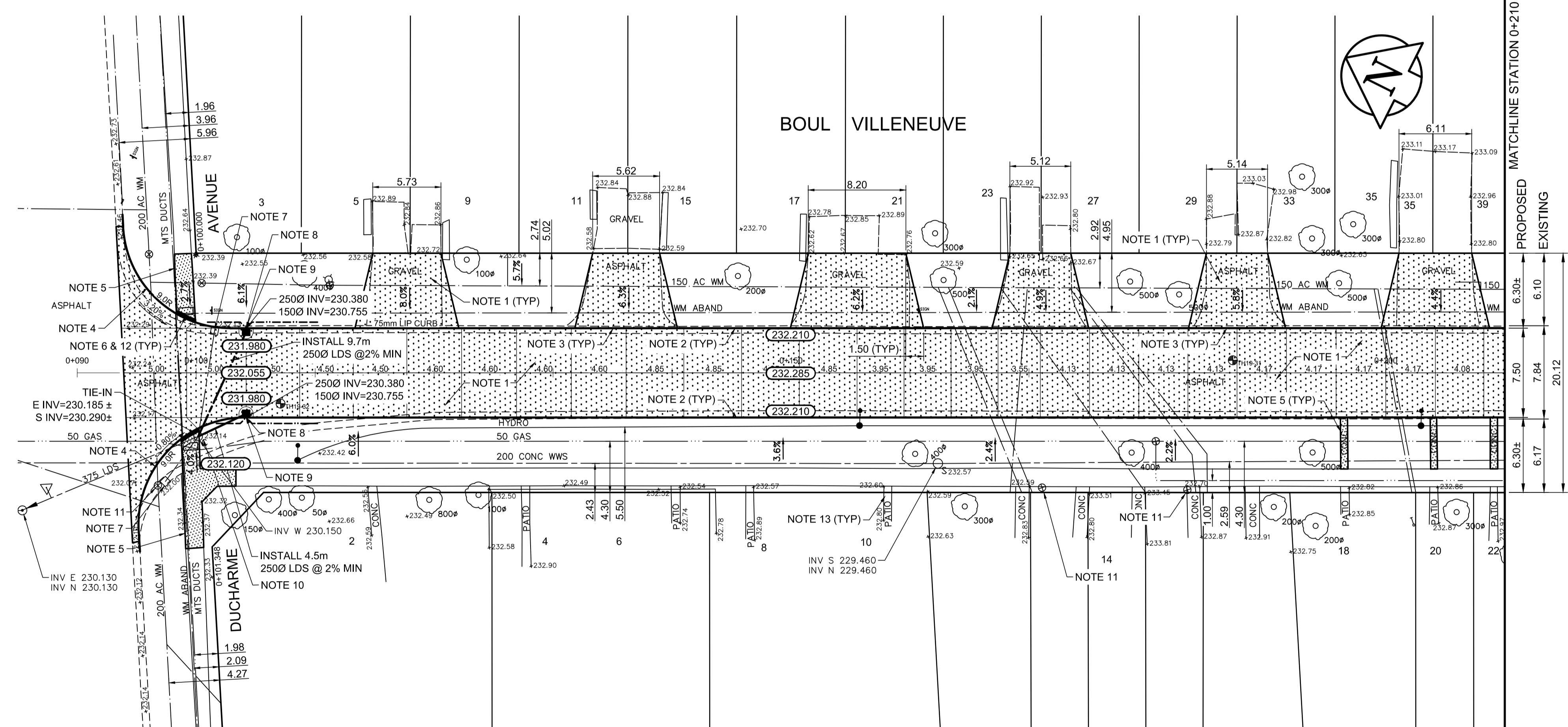
TYPICAL CROSS SECTION

REFERENCE NOTES

- A. PAVEMENT DIMENSIONS ARE TO BACK OF CURB
- B. BASELINE IS CENTRE LINE RIGHT-OF-WAY
- C. PROPERTY LINES OBTAINED FROM CITY OF WINNIPEG L.B.I.S., AND NO SCALE FACTOR WAS APPLIED
- D. REFER TO AECOM FIELD BOOK NO. 5040

CONSTRUCTION NOTES

1. REMOVE EXISTING PAVEMENT AND CONSTRUCT NEW 150mm REINFORCED CONCRETE PAVEMENT
2. CONSTRUCT NEW BARRIER CURB (180mm HT. INTEGRAL)
3. CONSTRUCT NEW LIP CURB (40mm HT. INTEGRAL)
4. CONSTRUCT NEW MODIFIED BARRIER CURB (180mm HT. INTEGRAL)
5. RENEW EXISTING 100mm CONCRETE SIDEWALK
6. CONSTRUCT NEW CURB RAMP (10mm HT. INTEGRAL)
7. REMOVE EXISTING CATCHBASIN AND ABANDON LEAD
8. INSTALL NEW CURB AND GUTTER INLET \pm w/ CATCHBASIN 1800mm (SD-024) AND CONNECT TO EXISTING MANHOLE
9. INSTALL 150mm SUBDRAIN
10. ADJUST EXISTING MANHOLE TO GRADE
11. ADJUST EXISTING WATER VALVE TO GRADE
12. INSTALL NEW DETECTIBLE WARNING SURFACE TILE
13. REMOVE AND REINSTALL EXISTING PATIO BLOCKS TO GRADE



METRIC
WHOLE NUMBERS INDICATE MILLIMETRES
DECIMALIZED NUMBERS INDICATE METRES

| | | | | | |
|--------------|---------------------|-------------------|---------------------|---------------|-------------------|
| 150 mm W.M. | WATERMAIN | 130 mm W.M. | HYDRO | — x — | Q PROFILE |
| Hydrant | HYDRANT | Manhole | M.T.S. | — □ — | WEST GUTTER |
| Valve | VALVE | Survey Bar | CONCRETE | — ○ — | EAST GUTTER |
| 300mm L.D.S. | LAND DRAINAGE SEWER | Elevation | ASPHALT | — ◇ — | N/W PROPERTY LINE |
| 250mm W.W.S. | WASTEWATER SEWER | Tree | PROPERTY LINE | — ○ — | S/E PROPERTY LINE |
| Manhole | MANHOLE | Sidewalk Ramp | SURVEY BAR | — ○ — | |
| Catch Basin | CATCH BASIN | Concrete Sidewalk | ELEVATION (235.750) | — ○ — | |
| Catch Pit | CATCH PIT | Fence | TREE | — ○ — | |
| Junctions | JUNCTIONS | | SIDEWALK RAMP | — ○ — | |
| Culvert | CULVERT | | CONCRETE SIDEWALK | — ○ — | |
| Gas | GAS | | FENCE | — ○ — | |
| EXISTING | LEGEND - PLAN | PROPOSED | EXISTING | LEGEND - PLAN | PROPOSED |

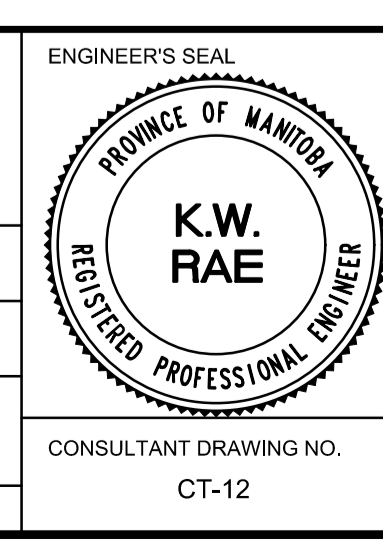
LOCATION APPROVED UNDERGROUND STRUCTURES

SUPV. U/G STRUCTURES COMMITTEE DATE

NOTE:
LOCATION OF UNDERGROUND STRUCTURES AS SHOWN ARE BASED ON THE BEST INFORMATION AVAILABLE. BUT NO GUARANTEE IS GIVEN THAT ALL EXISTING UTILITIES ARE SHOWN OR THAT THE GIVEN LOCATIONS ARE EXACT. CONFIRMATION OF EXISTENCE AND EXACT LOCATION OF ALL SERVICES MUST BE OBTAINED FROM THE INDIVIDUAL UTILITIES BEFORE PROCEEDING WITH CONSTRUCTION.

| | | | |
|---------------|--|------------|-----|
| B.M. 16 | Zone 88, S.E. Cor. Ave. Genereux & Dorge Dr. T&M in W. Conc. Foundation of No. 30 Ave. Genereux, 3.5 m S. & 0.2 m below stucco from N.W. Cor. of dwelling. | | |
| ELEV. 233.569 | | | |
| NO. | REVISIONS | DATE | BY |
| 0 | ISSUED FOR TENDER | 05/02/2019 | KWR |
| A | ISSUED FOR REVIEW | 03/15/2019 | BC |

| | |
|-------------------------------|--------|
| AECOM | |
| DESIGNED BY | JA |
| CHECKED BY | BC/KWR |
| DRAWN BY | JA |
| APPROVED BY | |
| HOR. SCALE: | 1:250 |
| VERTICAL: | 1:10 |
| RELEASED FOR CONSTRUCTION BY: | |
| DATE | |



THE CITY OF WINNIPEG
PUBLIC WORKS DEPARTMENT
ENGINEERING DIVISION

2019 LOCAL STREET RENEWAL PROGRAM

VILLENEUVE BOULEVARD - DUCHARME AVENUE TO TRAPPISTES STREET
CONCRETE RECONSTRUCTION
DUCHARME AVENUE TO STATION 0+210

CITY DRAWING NUMBER
SHEET 12 OF 17

CONSULTANT DRAWING NO. CT-12