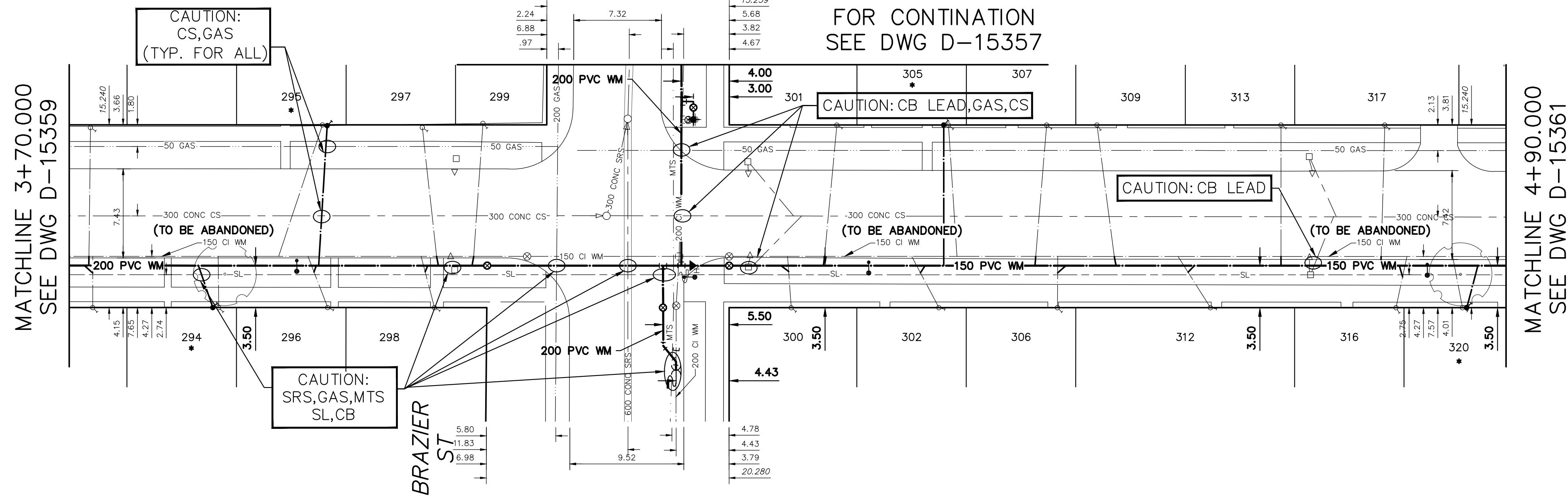


WATER SERVICE INFORMATION					
ADDRESS	SIZE (mm) MATERIAL (STREET)	SIZE (mm) MATERIAL (PROP.)	SHORT & LONG MEASUREMENT	CORP. LOCATION	REMARKS
316 JAMISON AVE RESIDENTIAL	20 CU	20 CU	OPP EL HSE 55.682 EEL BRAZIER ST	0.9 E OF S/C	RECONNECT SERVICE
317 JAMISON AVE RESIDENTIAL	20 CU	20 CU	2.75 WEL HSE 54.740 EEL BRAZIER ST	0.3 W OF S/C	RECONNECT SERVICE
320 JAMISON AVE RESIDENTIAL	20 CU	20 CU	2.59 WEL HSE 61.233 EEL BRAZIER ST	0.8 W OF S/C	RENEW TO R W/20 CU DUE TO TREE
321 JAMISON AVE COMMERCIAL	12 CU	12 CU	OPP EL HSE 72.022 EEL BRAZIER ST	0.3 W OF S/C	RECONNECT SERVICE
324 JAMISON AVE RESIDENTIAL	12 CU	20 CU	1.61 WEL HSE 72.247 EEL BRAZIER ST	OPP OF S/C	RECONNECT SERVICE
325 JAMISON AVE RESIDENTIAL	12 CU	12 CU	3.80 WEL HSE 81.777 EEL BRAZIER ST	0.5 E OF S/C	RENEW TO R W/20 CU
326 JAMISON AVE RESIDENTIAL	20 CU	12 CU	0.60 WEL HSE 81.600 EEL BRAZIER ST	OPP OF S/C	RECONNECT SERVICE
328 JAMISON AVE RESIDENTIAL	20 CU	20 CU	OPP EL HSE 91.701 EEL BRAZIER ST	0.3 E OF S/C	RECONNECT SERVICE
330 JAMISON AVE RESIDENTIAL	20 CU	-	1.75 EEL HSE 101.587 EEL BRAZIER ST	OPP OF S/C	RECONNECT SERVICE
333 JAMISON AVE RESIDENTIAL	20 CU	20 CU	6.45 WEL HSE 92.721 EEL BRAZIER ST	0.3 W OF S/C	RECONNECT SERVICE
334 JAMISON AVE RESIDENTIAL	12 LEAD	12 LEAD	1.98 EEL HSE 110.964 EEL BRAZIER ST	1.3 W OF S/C	RENEW TO R W/20 CU
335 JAMISON AVE RESIDENTIAL	20 CU	12 CU	-	-	RECONNECT SERVICE
337 JAMISON AVE RESIDENTIAL	20 CU	12 CU	-	-	RECONNECT SERVICE
337A JAMISON AVE RESIDENTIAL	20 CU	12 CU	-	-	RECONNECT SERVICE
339 JAMISON AVE RESIDENTIAL	20 CU	20 CU	2.50 WEL HSE 122.871 EEL BRAZIER ST	0.5 E OF S/C	RECONNECT SERVICE
340 JAMISON AVE RESIDENTIAL	12 LEAD	12 LEAD	OPP EL HSE 128.415 EEL BRAZIER ST	OPP OF S/C	RENEW TO R W/20 CU
341 JAMISON AVE RESIDENTIAL	12 LEAD	12 LEAD	9.03 WEL HSE 128.148 EEL BRAZIER ST	0.3 W OF S/C	RENEW TO R W/20 CU
342 JAMISON AVE RESIDENTIAL	12 LEAD	12 LEAD	OPP EL HSE 130.999 EEL BRAZIER ST	OPP OF S/C	RENEW TO R W/20 CU
346 JAMISON AVE RESIDENTIAL	20 CU	20 CU	1.65 WEL HSE 156.277 WML ROCH ST	0.3 E OF S/C	RECONNECT SERVICE
347 JAMISON AVE RESIDENTIAL	12 LEAD	12 LEAD	0.50 WEL HSE 153.578 WML ROCH ST	0.3 E OF S/C	RENEW TO R W/20 CU
350 JAMISON AVE RESIDENTIAL	12 LEAD	12 LEAD	3.47 EEL HSE 141.844 WML ROCH ST	3.5 W OF S/C	RENEW TO R W/20 CU
351 JAMISON AVE RESIDENTIAL	16 LEAD	16 LEAD	OPP EL HSE 145.522 WML ROCH ST	0.3 W OF S/C	RENEW TO R W/20 CU
353 JAMISON AVE RESIDENTIAL	16 LEAD	12 LEAD	2.36 EEL HSE 135.477 WML ROCH ST	3.3 E OF S/C	RENEW TO R W/20 CU
354 JAMISON AVE RESIDENTIAL	20 CU	20 CU	2.68 WEL HSE 128.614 WML ROCH ST	0.3 W OF S/C	RECONNECT SERVICE
355 JAMISON AVE RESIDENTIAL	-	-	4.37 WEL HSE 134.542 WML ROCH ST	-	RENEW TO R W/20 CU
357 JAMISON AVE RESIDENTIAL	20 CU	12 CU	3.94 EEL HSE 117.945 WML ROCH ST	0.7 W OF S/C	RECONNECT SERVICE
358 JAMISON AVE RESIDENTIAL	20 CU	20 CU	6.95 WEL HSE 120.641 WML ROCH ST	1.8 W OF S/C	RECONNECT SERVICE
361 JAMISON AVE RESIDENTIAL	20 CU	12 CU	2.98 WEL HSE 120.641 WML ROCH ST	0.8 W OF S/C	RECONNECT SERVICE
363 JAMISON AVE RESIDENTIAL	20 CU	20 CU	1.10 WEL HSE 108.371 WML ROCH ST	0.3 W OF S/C	RECONNECT SERVICE
364 JAMISON AVE RESIDENTIAL	20 CU	12 CU	2.79 EEL HSE 96.625 WML ROCH ST	OPP OF S/C	RECONNECT SERVICE WYED W/366
365 JAMISON AVE RESIDENTIAL	20 CU	20 CU	4.89 WEL HSE 104.023 WML ROCH ST	2.5 E OF S/C	RECONNECT SERVICE
366 JAMISON AVE RESIDENTIAL	20 CU	12 CU	3.35 WEL HSE 95.386 WML ROCH ST	0.8 W OF S/C	RECONNECT SERVICE WYED W/364
367 JAMISON AVE COMMERCIAL	20 CU	20 CU	3.39 WEL HSE 94.031 WML ROCH ST	0.8 W OF S/C	RECONNECT SERVICE
370 JAMISON AVE RESIDENTIAL	20 CU	12 CU	OPP EL HSE 83.790 WML ROCH ST	0.6 E OF S/C	RENEW TO R W/20 CU WYED W/372
371 JAMISON AVE RESIDENTIAL	20 CU	20 CU	4.40 WEL HSE 84.261 WML ROCH ST	OPP OF S/C	RECONNECT SERVICE
372 JAMISON AVE RESIDENTIAL	20 CU	12 CU	0.60 WML HSE 83.454 WML ROCH ST	0.3 E OF S/C	RENEW TO R W/20 CU WYED W/370
374 JAMISON AVE RESIDENTIAL	12 LEAD	12 LEAD	0.40 EEL HSE 68.449 WML ROCH ST	0.4 E OF S/C	RENEW TO R W/20 CU
375 JAMISON AVE RESIDENTIAL	20 CU	20 CU	3.50 EWL HSE 68.361 WML ROCH ST	1.8 W OF S/C	RENEW TO R W/20 CU DUE TO TREE
376 JAMISON AVE RESIDENTIAL	20 CU	20 CU	0.50 EEL HSE 60.672 WML ROCH ST	0.4 E OF S/C	RECONNECT SERVICE
380 JAMISON AVE RESIDENTIAL	16 LEAD	12 LEAD	OPP EL HSE 53.871 WML ROCH ST	0.7 E OF S/C	RECONNECT SERVICE WYED W/382
382 JAMISON AVE RESIDENTIAL	16 CU	12 CU	1.14 WML HSE 53.209 WML ROCH ST	OPP OF S/C	RECONNECT SERVICE WYED W/381
383 JAMISON AVE RESIDENTIAL	-	20 CU	2.20 EWL HSE 50.737 WML ROCH ST	-	RECONNECT SERVICE
384 JAMISON AVE RESIDENTIAL	20 CU	12 CU	1.65 WEL HSE 40.422 WML ROCH ST	OPP OF S/C	RECONNECT SERVICE
385 JAMISON AVE RESIDENTIAL	20 CU	20 CU	0.75 WEL HSE 38.896 WML ROCH ST	OPP OF S/C	RECONNECT SERVICE
386 JAMISON AVE RESIDENTIAL	12/16 LEAD	12/16 LEAD	1.10 EEL HSE 29.981 WML ROCH ST	0.5 E OF S/C	RENEW TO R W/20 CU WYED W/390
387 JAMISON AVE RESIDENTIAL	-	-	1.20 WEL HSE 32.167 WML ROCH ST	0.5 E OF S/C	RENEW TO R W/20 CU
390 JAMISON AVE RESIDENTIAL	12/16 LEAD	12 LEAD	0.70 WML HSE 29.028 WML ROCH ST	6.3 W OF S/C	RENEW TO R W/20 CU WYED W/386
391 JAMISON AVE RESIDENTIAL	20 CU	20 CU	2.10 WEL HSE 25.349 WML ROCH ST	OPP OF S/C	RECONNECT SERVICE
392 JAMISON AVE RESIDENTIAL	20 CU	12 CU	2.04 EEL HSE 15.767 WML ROCH ST	1.2 E OF S/C	RECONNECT SERVICE WYED W/394
393 JAMISON AVE RESIDENTIAL	20 CU	12 CU	0.80 WEL HSE 16.827 WML ROCH ST	OPP OF S/C	RECONNECT SERVICE
394 JAMISON AVE RESIDENTIAL	20 CU	16 CU	4.90 WEL HSE 15.530 WML ROCH ST	1.6 W OF S/C	RECONNECT SERVICE WYED W/392
397 JAMISON AVE RESIDENTIAL	12 LEAD	12 LEAD	4.38 EWL HSE 1.951 WML ROCH ST	2.8 E OF S/C	RENEW TO R W/20 CU
398 JAMISON AVE SPRINKLER	20 CU	20 CU	OPP EL BLDG 0.508 WML ROCH ST	0.5 W OF S/C	RECONNECT SERVICE
400 JAMISON AVE RESIDENTIAL	12 CU	12 CU	4.30 EWL HSE 8.899 EEL ROCH ST	3.0 W OF S/C	RECONNECT SERVICE
401 JAMISON AVE RESIDENTIAL	12 LEAD	20 CU	0.59 EWL HSE 1.507 EEL ROCH ST	0.7 E OF S/C	RENEW TO R W/20 CU

* SERVICES TO BE RENEWED TO R. ALL OTHERS TO BE RECONNECTED



METRIC
WHOLE NUMBERS INDICATE MILLIMETRES
DECIMALIZED NUMBERS INDICATE METRES

WARNING
IF POWER EQUIPMENT OR EXPLOSIVES ARE TO BE USED FOR EXCAVATION ON THIS PROJECT THE CONTRACTOR MUST:
1) NOTIFY THE GAS COMPANY OF THE PROPOSED LOCATION OF EXCAVATION.
2) TAKE PRECAUTION TO AVOID DAMAGE TO GAS COMPANY INSTALLATIONS.
SEE PROVINCIAL REGULATION 210/72 FOR DETAILS

LOCATION APPROVED
UNDERGROUND STRUCTURES

SUPV. U/G STRUCTURES COMMITTEE DATE

NOTE:
LOCATION OF UNDERGROUND STRUCTURES AS SHOWN ARE BASED ON THE BEST INFORMATION AVAILABLE BUT NO GUARANTEE IS GIVEN THAT ALL EXISTING UTILITIES ARE SHOWN OR THAT THE GIVEN LOCATIONS ARE EXACT. CONFIRMATION OF EXISTENCE AND EXACT LOCATION OF ALL UTILITIES MUST BE OBTAINED FROM THE INDIVIDUAL UTILITIES BEFORE PROCEEDING WITH CONSTRUCTION.

NO.	REVISIONS	DATE	BY

DESIGNED BY	MJK	CHECKED BY	SC
DRAWN BY	RS	APPROVED BY	KZ
SCALE:	RELEASED FOR CONSTRUCTION		
HORIZONTAL: 1:250	K. ZUREK		
VERTICAL: 1:50	DATE 2019-03-26		
DATE	2019-03-26	DATE	2019-03-25

ENGINEER'S SEAL

ORIGINAL SIGNED
BY S.R.J. COURNOYER
19/03/25

CONSULTANT DRAWING NUMBER

THE CITY OF WINNIPEG
WATER AND WASTE DEPARTMENT
ENGINEERING DIVISION

2019 WATER MAIN RENEWALS
CONTRACT 8
JAMISON AVENUE
40 W OF BRAZIER STREET TO
65 E OF BRAZIER STREET

SHEET 6 OF 11
CITY DRAWING NUMBER
D-15360

FOR INDEX SEE D-15356

NOTE: ALL VALVES TO BE INSTALLED COUNTERCLOCKWISE TO CLOSE