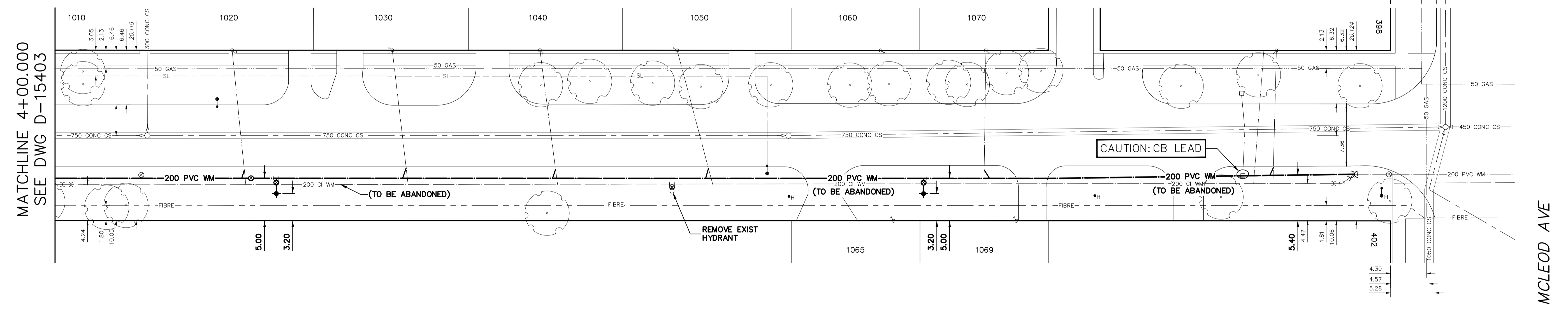


NOTE: CHAINAGES SHOWN ARE ALONG E. P. OF ROCH STREET

ROCH STREET

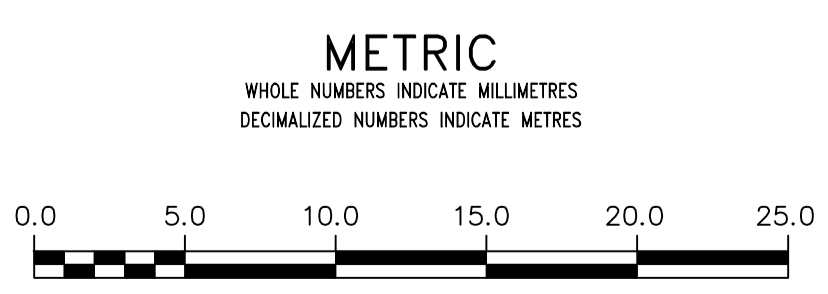


MATCHLINE 4+00.000
SEE DWG D-15403

MCLEOD AVE



FOR INDEX SEE D-15396
FOR WATER SERVICE TABLE SEE D-15403
NOTE: ALL VALVES TO BE INSTALL COUNTERCLOCKWISE TO CLOSE



WARNING
IF POWER EQUIPMENT OR EXPLOSIVES ARE TO BE USED FOR EXCAVATION ON THIS PROJECT THE CONTRACTOR MUST:
1) NOTIFY THE GAS COMPANY OF THE PROPOSED LOCATION OF EXCAVATION.
2) TAKE PRECAUTION TO AVOID DAMAGE TO GAS COMPANY INSTALLATIONS.
SEE PROVINCIAL REGULATION 210/72 FOR DETAILS

LOCATION APPROVED UNDERGROUND STRUCTURES
SUPV. U/G STRUCTURES COMMITTEE DATE
NOTE:
LOCATION OF UNDERGROUND STRUCTURES AS SHOWN ARE BASED ON THE BEST INFORMATION AVAILABLE BUT NO GUARANTEE IS GIVEN THAT ALL EXISTING UTILITIES ARE SHOWN OR THAT THE GIVEN LOCATIONS ARE EXACT. CONFIRMATION OF EXISTENCE AND EXACT LOCATION OF ALL SERVICES MUST BE OBTAINED FROM THE INDIVIDUAL UTILITIES BEFORE PROCEEDING WITH CONSTRUCTION.

NO.	REVISIONS	DATE	BY

DESIGNED BY	MJK	CHECKED BY	SC
DRAWN BY	RS	APPROVED BY	KZ
SCALE:	HORIZONTAL 1:250 VERTICAL 1:50		
DATE	2019 03 26	RELEASED FOR CONSTRUCTION	K. ZUREK
PLOT DATE:	2019 03 26	DATE	2019-03-25

ENGINEER'S SEAL
ORIGINAL SIGNED BY
S.R.J.
COURNOYER
19/03/25
CONSULTANT DRAWING NUMBER

THE CITY OF WINNIPEG
WATER AND WASTE DEPARTMENT
ENGINEERING DIVISION

2019 WATER MAIN RENEWALS
CONTRACT 9
ROCH STREET
110 N OF COLVIN AVENUE TO
MCLEOD AVENUE

SHEET 10 OF 12
CITY DRAWING NUMBER
D-15404