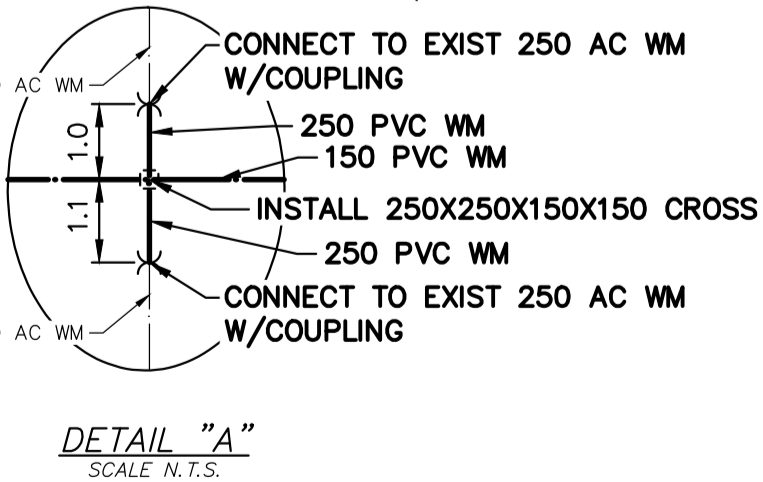


NOTE: CHAINAGES SHOWN ARE ALONG N. P.L. OF BLUEBERRY BAY (S-LEG)

BLUEBERRY BAY (S-LEG)

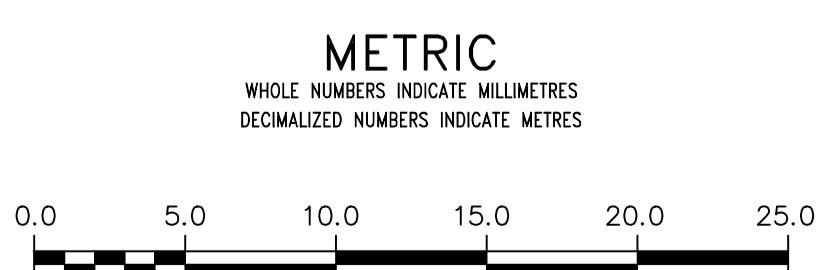
CAUTION: GAS,CB LEAD, LDS,WWS,HYDRO



FOR WATER SERVICE TABLE SEE D-15387

FOR INDEX SEE D-15381

NOTE: ALL VALVES TO BE INSTALLED COUNTERCLOCKWISE TO CLOSE



WARNING
IF POWER EQUIPMENT OR EXPLOSIVES ARE TO BE USED FOR EXCAVATION ON THIS PROJECT THE CONTRACTOR MUST:
1) NOTIFY THE GAS COMPANY OF THE PROPOSED LOCATION OF EXCAVATION.
2) TAKE PRECAUTION TO AVOID DAMAGE TO GAS COMPANY INSTALLATIONS.
SEE PROVINCIAL REGULATION 210/72 FOR DETAILS

LOCATION APPROVED
UNDERGROUND STRUCTURES
SUPV. U/G STRUCTURES COMMITTEE DATE
NOTE:
LOCATION OF UNDERGROUND STRUCTURES AS SHOWN ARE BASED ON THE BEST INFORMATION AVAILABLE BUT NO GUARANTEE IS GIVEN THAT ALL EXISTING UTILITIES ARE SHOWN OR THAT THE GIVEN LOCATIONS ARE EXACT. CONFIRMATION OF EXISTENCE AND EXACT LOCATION OF ALL UTILITIES MUST BE OBTAINED FROM THE INDIVIDUAL UTILITIES BEFORE PROCEEDING WITH CONSTRUCTION.

B.M. ELEV.	NO.	REVISIONS	DATE	BY

DESIGNED BY	TGS	CHECKED BY	SC
DRAWN BY	BL	APPROVED BY	KZ
SCALE:	HORIZONTAL 1:250 VERTICAL 1:50		
DATE	2019 04 08	RELEASED FOR CONSTRUCTION	K.ZUREK
PLOT DATE:	2019 04 08	DATE	2019 04 05

ENGINEER'S SEAL
ORIGINAL SIGNED BY
S.R.J. COURNOYER
19/04/04
CONSULTANT DRAWING NUMBER

THE CITY OF WINNIPEG
WATER AND WASTE DEPARTMENT
ENGINEERING DIVISION
2019 WATER MAIN RENEWALS
CONTRACT 2
BLUEBERRY BAY (S-LEG)
BLUEBERRY BAY (W-LEG) TO
DRAKE BOULEVARD
SHEET 7 OF 15
CITY DRAWING NUMBER
D-15386