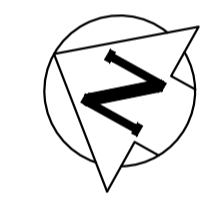
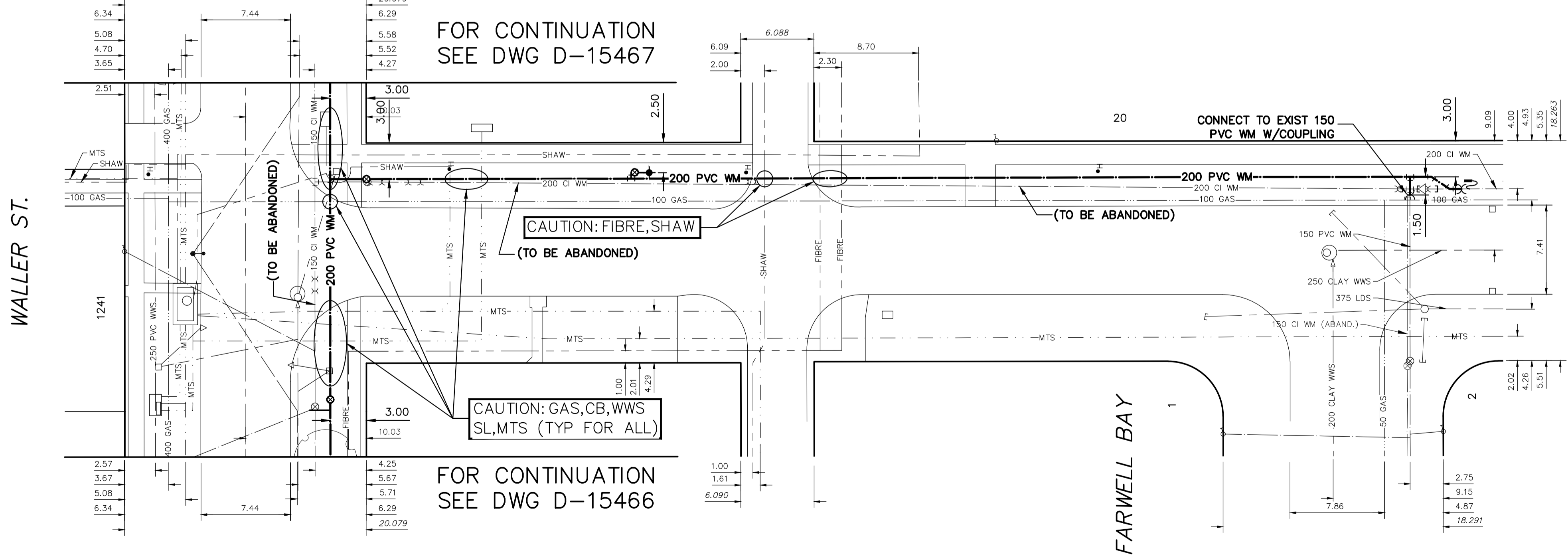


NOTE: CHAINAGES SHOWN ARE ALONG N. R. OF DONNELLY AVE



DONNELLY AVENUE



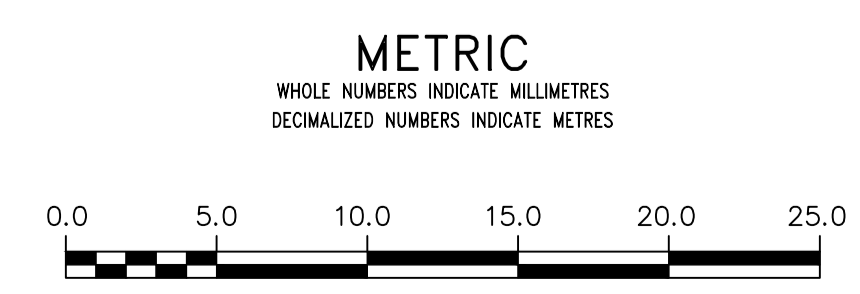
WATER SERVICE INFORMATION

ADDRESS	SIZE (mm) MATERIAL (STREET)	SIZE (mm) MATERIAL (PROP.)	SHORT & LONG MEASUREMENT	CORP. LOCATION	REMARKS
20 DONNELLY AVE COMMERCIAL	-	-	5.10 SNL BLDG 52.376 SSL WALLER ST	-	RECONNECT SERVICE
1 FARWELL BY RESIDENTIAL	20 CU	20 CU	0.59 EWL HSE 6.104 WWL DONNELLY AVE	0.3 W OF S/C	OUTSIDE RENEWAL LIMITS
2 FARWELL BY RESIDENTIAL	20 CU	20 CU	8.32 EWL HSE 5.825 WWL DONNELLY AVE	0.3 W OF S/C	OUTSIDE RENEWAL LIMITS

* SERVICES TO BE RENEWED TO R. ALL OTHERS TO BE RECONNECTED

FOR INDEX SEE 15456

NOTE: ALL VALVES TO BE INSTALLED CLOCKWISE TO CLOSE



WARNING
IF POWER EQUIPMENT OR EXPLOSIVES ARE TO BE USED FOR EXCAVATION ON THIS PROJECT THE CONTRACTOR MUST:
1) NOTIFY THE GAS COMPANY OF THE PROPOSED LOCATION OF EXCAVATION.
2) TAKE PRECAUTION TO AVOID DAMAGE TO GAS COMPANY INSTALLATIONS.
SEE PROVINCIAL REGULATION 210/72 FOR DETAILS

LOCATION APPROVED UNDERGROUND STRUCTURES
SUPV. U/G STRUCTURES COMMITTEE DATE
NOTE:
LOCATION OF UNDERGROUND STRUCTURES AS SHOWN ARE BASED ON THE BEST INFORMATION AVAILABLE BUT NO GUARANTEE IS GIVEN THAT ALL EXISTING UTILITIES ARE SHOWN OR THAT THE GIVEN LOCATIONS ARE EXACT. CONFIRMATION OF EXISTENCE AND EXACT LOCATION OF ALL UTILITIES MUST BE OBTAINED FROM THE INDIVIDUAL UTILITIES BEFORE PROCEEDING WITH CONSTRUCTION.

B.M. ELEV.	NO.	REVISIONS	DATE	BY

DESIGNED BY	TGS	CHECKED BY	SC
DRAWN BY	RS	APPROVED BY	KZ
SCALE:	HORIZONTAL 1:250 VERTICAL 1:50	RELEASED FOR CONSTRUCTION	KAS ZUREK
DATE	2019 05 14	DATE	2019-05-13

ENGINEER'S SEAL
ORIGINAL SIGNED BY
S.R.J COURNOYER
19/05/13
CONSULTANT DRAWING NUMBER

THE CITY OF WINNIPEG
WATER AND WASTE DEPARTMENT
ENGINEERING DIVISION
2019 WATER MAIN RENEWALS
CONTRACT 3
DONNELLY AVENUE
WALLER STREET TO FARWELL BAY

SHEET 10 OF 14
CITY DRAWING NUMBER
D-15464