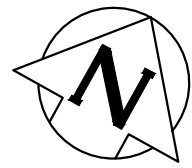


NOTE: CHAINAGES SHOWN ARE ALONG S. R. OF WALLER AVENUE

WALLER AVENUE

CAUTION: GAS, CS, WWS
SL, MTS (TYP FOR ALL)



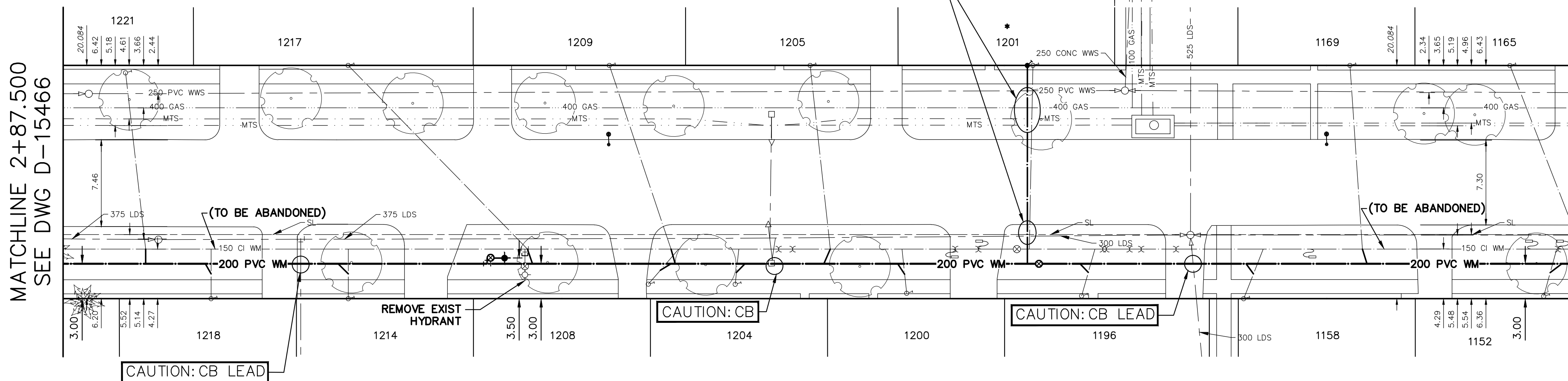
WATER SERVICE INFORMATION

ADDRESS	SIZE (mm) MATERIAL (STREET)	SIZE (mm) MATERIAL (PROP.)	SHORT & LONG MEASUREMENT	CORP. LOCATION	REMARKS
1221 WALLER ST RESIDENTIAL	20 CU	-	7.01 WEL HSE 74.520 EEL DONNELLY AVE	1.8 E OF S/C	RECONNECT SERVICE
1218 WALLER ST RESIDENTIAL	20 CU	-	4.39 WEL HSE 81.994 EEL DONNELLY AVE	OPP OF S/C	RECONNECT SERVICE
1217 WALLER ST RESIDENTIAL	20 CU	-	1.09 WEL HSE 93.702 EEL DONNELLY AVE	15.3 E OF S/C	RECONNECT SERVICE
1214 WALLER ST RESIDENTIAL	20 CU	-	1.74 EWL HSE 93.746 EEL DONNELLY AVE	OPP OF S/C	RECONNECT SERVICE
1209 WALLER ST RESIDENTIAL	20 CU	20 CU	7.82 EWL HSE 116.268 EEL DONNELLY AVE	OPP OF S/C	RECONNECT SERVICE
1208 WALLER ST COMMERCIAL	20 CU	-	3.43 EEL HSE 119.593 EEL DONNELLY AVE	2.6 E OF S/C	RECONNECT SERVICE
1205 WALLER ST RESIDENTIAL	20 CU	20 CU	5.21 WEL HSE 132.955 EEL DONNELLY AVE	1.8 E OF S/C	RECONNECT SERVICE
1204 WALLER ST RESIDENTIAL	20 CU	-	5.35 WEL HSE 128.150 EEL DONNELLY AVE	0.3 E OF S/C	RECONNECT SERVICE
1201 WALLER ST RESIDENTIAL	20 CU	20 CU	4.48 WEL HSE 152.728 EEL DONNELLY AVE	0.3 W OF S/C	RENEW TO R. W/20 CU PREVIOUS FROZEN SERVICE
1200 WALLER ST RESIDENTIAL	20 CU	20 CU	1.08 WEL HSE 141.799 EEL DONNELLY AVE	0.4 W OF S/C	RECONNECT SERVICE
1196 WALLER ST RESIDENTIAL	20 CU	20 CU	5.59 EWL HSE 156.882 EEL DONNELLY AVE	1.2 W OF S/C	RENEW DUE TREE
1169 WALLER ST RESIDENTIAL	20 CU	20 CU	7.88 EWL HSE 112.636 WEL MARSHALL CR	1.1 E OF S/C	RECONNECT SERVICE
1168 WALLER ST RESIDENTIAL	20 CU	-	3.94 WEL HSE 98.509 WEL MARSHALL CR	6.1 E OF S/C	RECONNECT SERVICE
1158 WALLER ST RESIDENTIAL	-	-	0.80 WEL HSE 121.472 WEL MARSHALL CR	1.7 E OF S/C	RECONNECT SERVICE
1152 WALLER ST RESIDENTIAL	20 CU	-	3.37 WEL HSE 95.652 WEL MARSHALL CR	1.1 E OF S/C	RECONNECT SERVICE

* SERVICES TO BE RENEWED TO R. ALL OTHERS TO BE RECONNECTED

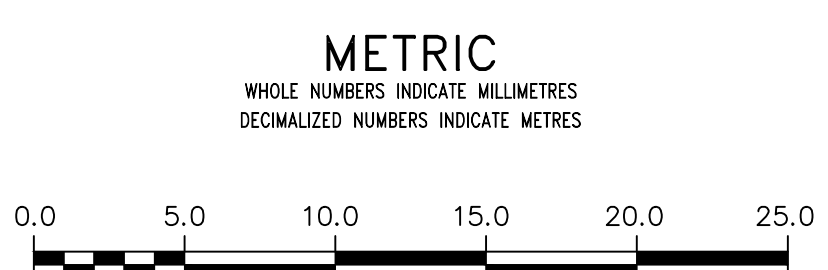
MATCHLINE 2+87.500
SEE DWG D-15466

MATCHLINE 4+17.500
SEE DWG D-15468



FOR INDEX SEE 15456

NOTE: ALL VALVES TO BE INSTALL CLOCKWISE TO CLOSE



WARNING
IF POWER EQUIPMENT OR EXPLOSIVES ARE TO BE USED FOR EXCAVATION ON THIS PROJECT THE CONTRACTOR MUST:
1) NOTIFY THE GAS COMPANY OF THE PROPOSED LOCATION OF EXCAVATION.
2) TAKE PRECAUTION TO AVOID DAMAGE TO GAS COMPANY INSTALLATIONS.
SEE PROVINCIAL REGULATION 210/72 FOR DETAILS

LOCATION APPROVED UNDERGROUND STRUCTURES
SUPP. U/G STRUCTURES COMMITTEE DATE
NOTE:
LOCATION OF UNDERGROUND STRUCTURES AS SHOWN ARE BASED ON THE BEST INFORMATION AVAILABLE BUT NO GUARANTEE IS GIVEN THAT ALL EXISTING UTILITIES ARE SHOWN OR THAT THE GIVEN LOCATIONS ARE EXACT. CONFIRMATION OF EXISTENCE AND EXACT LOCATION OF ALL UTILITIES MUST BE OBTAINED FROM THE INDIVIDUAL UTILITIES BEFORE PROCEEDING WITH CONSTRUCTION.

NO.	REVISIONS	DATE	BY

DESIGNED BY	TGS	CHECKED BY	SC
DRAWN BY	RS	APPROVED BY	KZ
SCALE:	HORIZONTAL 1:250 VERTICAL 1:50		
DATE	2019 05 14	RELEASED FOR CONSTRUCTION	KAS ZUREK 2019-05-13

ENGINEER'S SEAL
ORIGINAL SIGNED BY
S.R.J COURNOYER
19/05/13
CONSULTANT DRAWING NUMBER

THE CITY OF WINNIPEG
WATER AND WASTE DEPARTMENT
ENGINEERING DIVISION
2019 WATER MAIN RENEWALS
CONTRACT 3
WALLER STREET
69 E OF DONNELLY AVENUE TO
45 W OF MARSHALL CRESCENT

SHEET 13 OF 14
CITY DRAWING NUMBER
D-15467