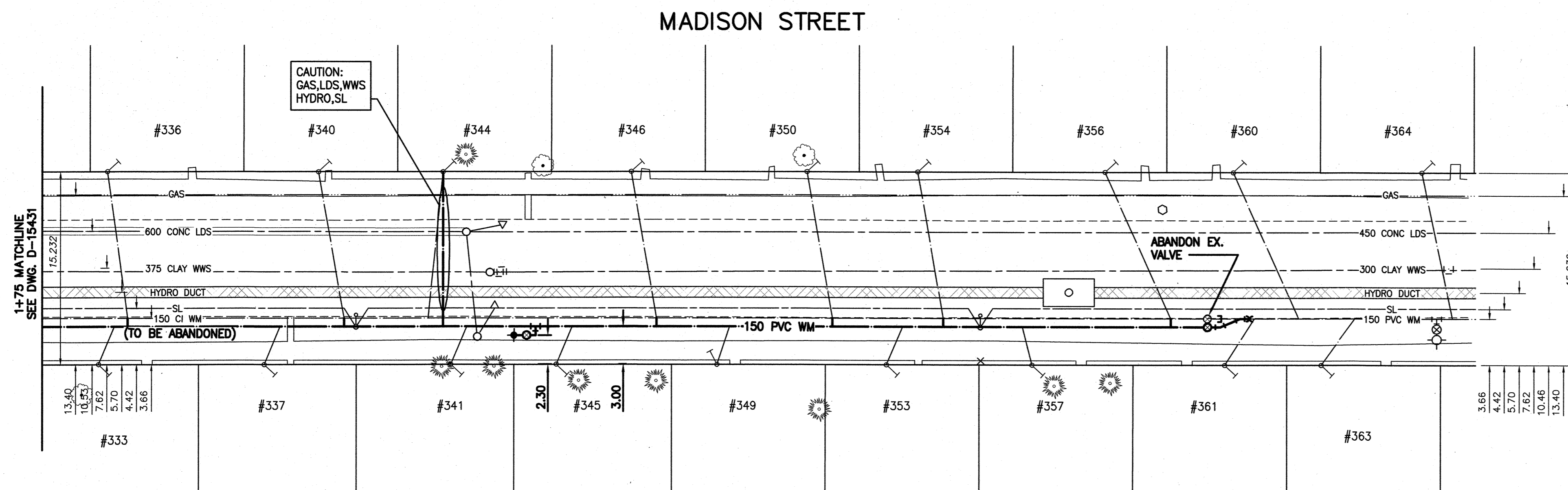
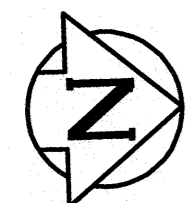


NOTE: CHAINAGES SHOWN ARE ALONG CENTRE LINE OF ROW

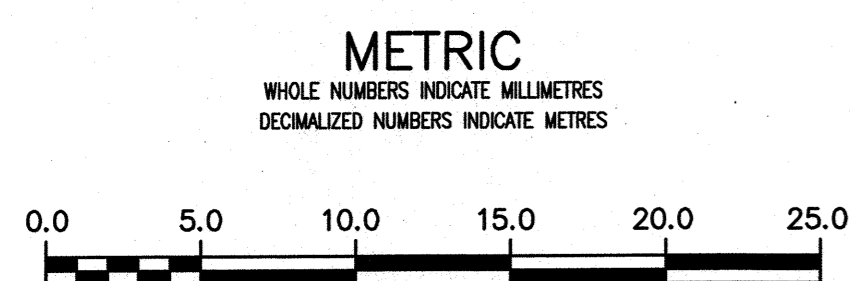


WATER SERVICE INFORMATION

ADDRESS	PIPE SIZE & MATERIAL (STREET)	PIPE SIZE & MATERIAL (PROP.)	SHORT & LONG MEASUREMENT	CORP. LOCATION	REMARKS
333 MADISON ST	-	20	2.13 NSHL	-	RECONNECT SERVICE
RESIDENTIAL	-	CU	-	-	-
336 MADISON ST	-	-	0.76 SSSL	-	RECONNECT SERVICE
RESIDENTIAL	-	-	-	-	-
337 MADISON ST	-	-	2.44 NSHL	-	RECONNECT SERVICE
RESIDENTIAL	-	-	-	-	-
340 MADISON ST	-	-	3.20 NSHL	-	RECONNECT SERVICE
RESIDENTIAL	-	-	-	-	-
341 MADISON ST	-	-	2.01 NSHL	-	RECONNECT SERVICE
RESIDENTIAL	-	-	-	-	-
344 MADISON ST	25	20	1.52 NSHL	55.78 N HYD OPP NPL	RENEW SERVICE
RESIDENTIAL	LEAD	CU	-	321 MADISON ST	-
346 MADISON ST	-	-	3.41 NSHL	-	RECONNECT SERVICE
RESIDENTIAL	-	-	-	-	-
346 MADISON ST	-	20	0.40 NSHL	-	RECONNECT SERVICE
RESIDENTIAL	-	CU	-	-	-
349 MADISON ST	20	20	3.60 N/SPL	1.20 N OF S/C	RECONNECT SERVICE
RESIDENTIAL	CU	CU	-	-	-
350 MADISON ST	-	-	1.28 NSHL	-	RECONNECT SERVICE
RESIDENTIAL	-	-	-	-	-
353 MADISON ST	20	25	2.13 NSHL	45.11 S HYD OPP	RECONNECT SERVICE
RESIDENTIAL	CU	LEAD	-	365 MADISON ST	-
354 MADISON ST	-	20	1.98 NSHL	-	RECONNECT SERVICE
RESIDENTIAL	-	CU	-	-	-
356 MADISON ST	-	-	1.83 NSHL	-	RECONNECT SERVICE
RESIDENTIAL	-	-	-	-	-
357 MADISON ST	20	-	1.52 NSHL	0.61 NSHL	RECONNECT SERVICE
RESIDENTIAL	CU	-	-	-	-
360 MADISON ST	25	-	2.29 NSHL	14.02 S HYD OPP	OUTSIDE LIMITS
RESIDENTIAL	LEAD	-	-	365 MADISON ST	-
361 MADISON ST	25	-	2.74 NSHL	17.53 S HYD OPP	OUTSIDE LIMITS
RESIDENTIAL	LEAD	-	-	365 MADISON ST	-
363 MADISON ST	20	-	0.46 NSHL	9.80 S HYD OPP	OUTSIDE LIMITS
RESIDENTIAL	LEAD	-	-	365 MADISON ST	-
364 MADISON ST	20	-	1.37 NSHL	1.83 S HYD OPP 365	OUTSIDE LIMITS
RESIDENTIAL	LEAD	-	-	365 MADISON ST	-

* SERVICES TO BE RENEWED TO R

NOTE: VALVES TO BE INSTALLED COUNTERCLOCKWISE TO CLOSE

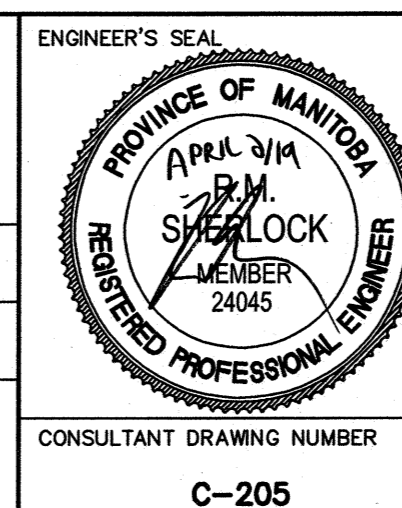


ENGINEERS GEOSCIENTISTS MANITOBA
 Certificate of Authorization
 Stantec Consulting Ltd.
 No. 1301

LOCATION APPROVED UNDERGROUND STRUCTURES		B.M. 38-30 ELEV. 234.449m	N.W. COR. QUEEN ST. & SILVER AVE., TBLT. IN S. CONC. FOUNDATION NO. 424 QUEEN ST., 1 M.E. & 0.2 M BELOW
SUPV. U/G STRUCTURES COMMITTEE	DATE		
NOTE:			
LOCATION OF UNDERGROUND STRUCTURES AS SHOWN ARE BASED ON THE BEST INFORMATION AVAILABLE BUT NO GUARANTEE IS GIVEN THAT ALL EXISTING UTILITIES ARE SHOWN OR THAT THE GIVEN LOCATIONS ARE EXACT. CONFIRMATION OF EXISTENCE AND EXACT LOCATION OF ALL SERVICES MUST BE OBTAINED FROM THE INDIVIDUAL UTILITIES BEFORE PROCEEDING WITH CONSTRUCTION.			
NO.	ISSUED FOR	DATE	BY
02	ISSUED FOR TENDER	2019.04.02	RS
01	ISSUED FOR 30% REVIEW	2019.02.22	RS
	REVISIONS	DATE	BY



DESIGNED BY	RS	CHECKED BY	RS
DRAWN BY	SC	APPROVED BY	RS
SCALE:		RELEASED FOR CONSTRUCTION	
HORIZONTAL	1:250	DATE	2019.01.15
VERTICAL	1:50	DATE	APRIL 21/19
DATE	2019.01.15		
PLOT DATE:	2019 04 01		



CONSULTANT DRAWING NUMBER
C-205



THE CITY OF WINNIPEG
 WATER AND WASTE DEPARTMENT
 ENGINEERING DIVISION

2019 WATERMAIN RENEWALS
 CONTRACT 5
 MADISON STREET
 STA. 1+75 TO STA. 3+00

SHEET 06 OF 17
 CITY DRAWING NUMBER
 D-15432

TENDER NUMBER: 244-2019
 CONTRACT NUMBER: 05

FILE PATH: V:\1112\active\111218270\0300_drawing\0302_sheet_files\02_civ8\18270c-201-923.dwg