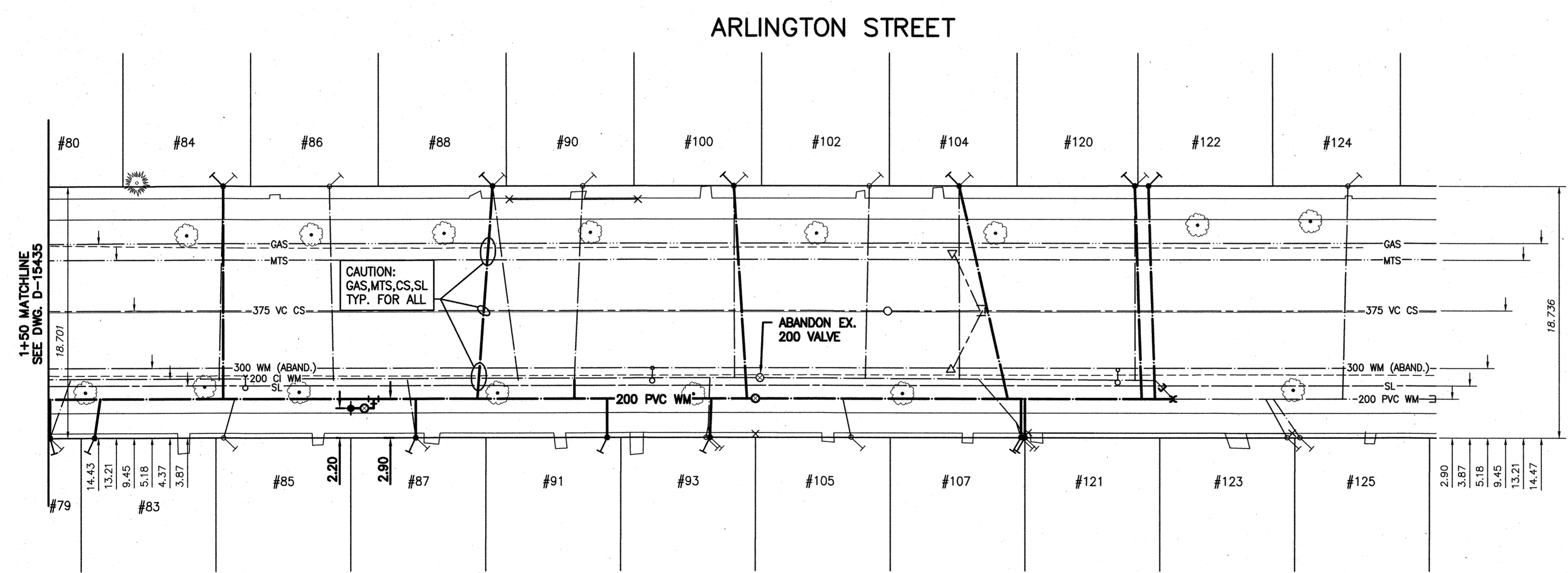
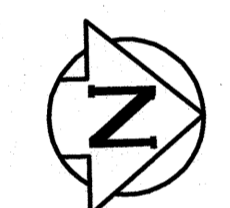


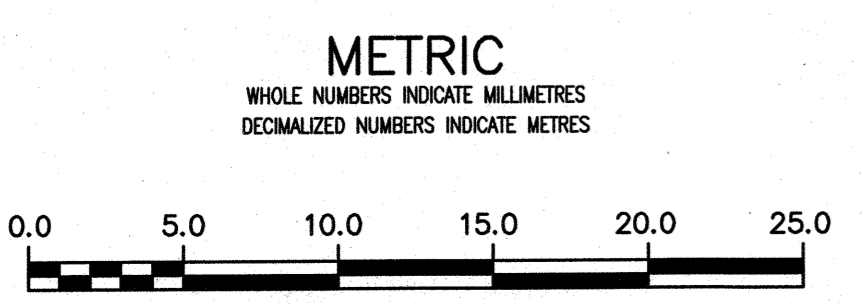
NOTE: CHAINAGES SHOWN ARE ALONG CENTRE LINE OF ROW



WATER SERVICE INFORMATION

ADDRESS	PIPE SIZE & MATERIAL (STREET)	PIPE SIZE & MATERIAL (PROP.)	SHORT & LONG MEASUREMENT	CORP. LOCATION	REMARKS
* 79 ARLINGTON ST	20	20	1.83 S N LINE HOUSE	1.52 N OF S/C	RENEW TO PL W/ 20 CU WYED W/ 83 (SEPARATE SERVICES)
RESIDENTIAL	CU	CU	50.14>NNL OF WOLSELEY		
* 83 ARLINGTON ST	16	12	1.22>NNL OF #83	1.22 N S/C	RENEW TO PL W/ 20 CU WYED W/ 79 (SEPARATE SERVICES)
RESIDENTIAL	CU	LEAD	63.09>NNL OF WOLSELEY		
* 84 ARLINGTON ST	20	12	0.91 SNL OF HOUSE	0.3 S OF S/C	RENEW SERVICE
RESIDENTIAL	LEAD	LEAD	63.09>NNL OF WOLSELEY		
85 ARLINGTON ST	16	12	1.22>NNL OF #83	1.22 N S/C	RECONNECT SERVICE
RESIDENTIAL	CU	LEAD	63.09>NNL OF WOLSELEY		
86 ARLINGTON ST	20	20	2.29 S NL HOUSE	0.3 N OF S/C	RECONNECT SERVICE
RESIDENTIAL	CU	CU	71.02>NNL WOLSELEY		
* 87 ARLINGTON ST	12	12	3.35 NSL HOUSE	76.81>NNL WOLSELEY	RENEW SERVICE
RESIDENTIAL	LEAD	CU	77.42>NNL WOLSELEY		
* 88 ARLINGTON ST	16	12	0.61>NNL HOUSE	140.51 SSL WESTMINSTER	RENEW SERVICE
RESIDENTIAL	LEAD	LEAD	4.57 IN FROM WEST CURB		
90 ARLINGTON ST	20	12	2.59 SNL HOUSE	0.61 S S/C	RECONNECT SERVICE
RESIDENTIAL	CU	LEAD	41.76 S 1ST HYDT S WESTMINSTER		
* 91 ARLINGTON ST	-	12	4.42 NSL OF #93	OPP S/C #93	RENEW TO PL W/ 20 CU WYED W/ 93 (SEPARATE SERVICES)
RESIDENTIAL	-	LEAD	99.06>NNL OF WOLSELEY		
* 93 ARLINGTON ST	-	12	4.72 NSL OF #93	OPP S/C	RENEW TO PL W/ 20 CU WYED W/ 91 (SEPARATE SERVICES)
RESIDENTIAL	-	LEAD	99.37>NNL OF WOLSELEY		
* 100 ARLINGTON ST	20	20	1.22 SNL OF HOUSE	OPP S/C	RENEW SERVICE
RESIDENTIAL	LEAD	CU	101.19>NNL OF WOLSELEY		
102 ARLINGTON ST	20	12	2.74 SNL HOUSE	0.3 S OF S/C	RECONNECT SERVICE
RESIDENTIAL	CU	LEAD	23.17 S 1ST HYDT S WESTMINSTER		
* 104 ARLINGTON ST	12	20	2.96 NSL OF HOUSE	OPP S/C	RENEW SERVICE
RESIDENTIAL	LEAD	CU	107.60 SSL OF WESTMINSTER		
105 ARLINGTON ST	20	20	1.83 SNL OF HOUSE	0.91 S OF S/C	RECONNECT SERVICE
RESIDENTIAL	CU	CU	21.34 S 1ST HYDT S WESTMINSTER		
* 107 ARLINGTON ST	-	12	0.3 SSL #121	119.48>NNL WOLSELEY	RENEW TO PL W/ 20 CU WYED W/ 121 (SEPARATE SERVICES)
RESIDENTIAL	-	LEAD	92.66 SSL WESTMINSTER		
* 120 ARLINGTON ST	16	12	0.55>NNL OF #120	OPP S/C	RENEW TO PL W/ 20 CU WYED W/ 122 (SEPARATE SERVICES)
RESIDENTIAL	LEAD	LEAD	94.49 SSL WESTMINSTER		
* 121 ARLINGTON ST	-	12	OPP SL OF #121	119.48>NNL WOLSELEY	RENEW TO PL W/ 20 CU WYED W/ 107 (SEPARATE SERVICES)
RESIDENTIAL	-	LEAD	92.36 SSL WESTMINSTER		
* 122 ARLINGTON ST	16	12	0.55>NNL OF #120	OPP S/C	RENEW TO PL W/ 20 CU WYED W/ 120 (SEPARATE SERVICES)
RESIDENTIAL	LEAD	LEAD	94.49 SSL WESTMINSTER		
123 ARLINGTON ST	20	12	0.35>NNL HOUSE	1.6 S OF S/C	OUTSIDE LIMITS
RESIDENTIAL	CU	LEAD	83.16 SSL WESTMINSTER		
124 ARLINGTON ST	20	12	2 SNL HOUSE	0.4 S OF S/C	OUTSIDE LIMITS
RESIDENTIAL	CU	LEAD	78.60 SSL WESTMINSTER		
125 ARLINGTON ST	20	20	1.3 SSL HOUSE	2 S OF S/C	OUTSIDE LIMITS
RESIDENTIAL	CU	CU	82.20 SSL WESTMINSTER		

NOTE: VALVES TO BE INSTALLED COUNTERCLOCKWISE TO CLOSE

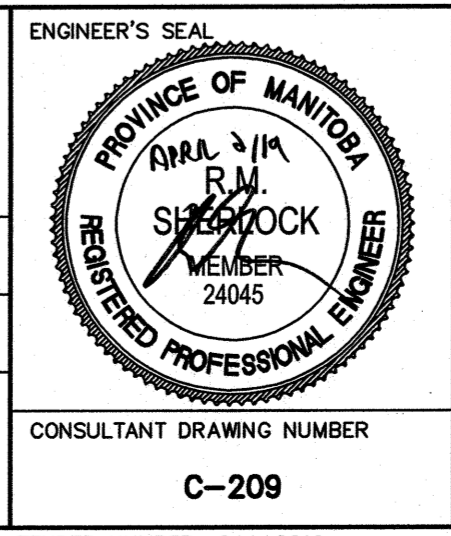


**ENGINEERS GEOSCIENTISTS MANITOBA**  
Certificate of Authorization  
Stantec Consulting Ltd.  
No. 1301

LOCATION APPROVED UNDERGROUND STRUCTURES		B.M. 36-57 ELEV. 232.727m		N.E. COR. WELLINGTON AVE. & MOORE ST., T.B.T. IN E. CONC. FOUNDATION NO. 725 MOORE ST., 1 M N. & 0.1 M	
SUPV. U/G STRUCTURES COMMITTEE	DATE				
NOTE: LOCATION OF UNDERGROUND STRUCTURES AS SHOWN ARE BASED ON THE BEST INFORMATION AVAILABLE BUT NO GUARANTEE IS GIVEN THAT ALL EXISTING UTILITIES ARE SHOWN OR THAT THE GIVEN LOCATIONS ARE EXACT. CONFIRMATION OF EXISTENCE AND EXACT LOCATION OF ALL SERVICES MUST BE OBTAINED FROM THE INDIVIDUAL UTILITIES BEFORE PROCEEDING WITH CONSTRUCTION.					
NO.	ISSUED FOR TENDER	2019.04.02	RS		
01	ISSUED FOR 30% REVIEW	2019.02.22	RS		
NO.	REVISIONS	DATE	BY		



DESIGNED BY	RS	CHECKED BY	RS
DRAWN BY	SC	APPROVED BY	RS
SCALE:	HORIZONTAL 1:250	RELEASED FOR CONSTRUCTION	DATE: April 9/19
	VERTICAL 1:50		
DATE	2019.01.15		
PLOT DATE:	2019.04.01		



**THE CITY OF WINNIPEG**  
WATER AND WASTE DEPARTMENT  
ENGINEERING DIVISION

2019 WATERMAIN RENEWALS  
CONTRACT 5  
ARLINGTON STREET  
STA. 1+50 TO STA. 2+50

SHEET 10 OF 17  
CITY DRAWING NUMBER  
D-15436

CONSULTANT DRAWING NUMBER  
C-209