

**WARNING**

IF POWER EQUIPMENT OR EXPLOSIVES ARE TO BE USED FOR EXCAVATION ON THIS PROJECT THE CONTRACTOR MUST:  
 1) NOTIFY THE GAS COMPANY OF THE PROPOSED LOCATION OF EXCAVATION.  
 2) TAKE PRECAUTION TO AVOID DAMAGE TO GAS COMPANY INSTALLATIONS.  
 SEE PROVINCIAL REGULATION 140/92 FOR DETAILS

**METRIC**

WHOLE NUMBERS INDICATE MILLIMETRES  
 DECIMALIZED NUMBERS INDICATE METRES

**NOTES:**

- CHAINAGES SHOWN ARE ALONG CENTERLINE OF ROAD.
- SUBDRAINS 18.00m EACH SIDE OF CATCH BASINS (SD-245).
- ALL PIPE UNDER EXISTING AND FUTURE PAVEMENT ARE INSTALLED BY TRENCHLESS METHODS.
- ALL LONG ASSEMBLY HYDRANTS (SD-006)  
 ALL SHORT ASSEMBLY HYDRANTS (SD-007).

150 WM	WATERMAIN	150 WM	HYDRO	150 WM	WATERMAIN	150 WM
+	HYDRANT	+	M.T.S.	+	HYDRANT, VALVE	+
⊗	VALVE	⊗	CONCRETE	⊗	LAND DRAINAGE SEWER	⊗
—	300 LDS	—	ASPHALT	—	WASTE WATER SEWER	—
—	250 WWS	—	SIDEWALK	—	PROPERTY LINE	—
●	MANHOLE	●	PROPERTY LINE	□	NORTH OR WEST GUTTER	□
■	CATCH BASIN	■	SURVEY BAR	○	SOUTH OR EAST GUTTER	○
▼	CURB INLET	▼	DITCH	◇	NORTH OR WEST R	◇
+	JUNCTIONS	+	ROAD ELEVATION	△	SOUTH OR EAST R	△
—	CULVERT	—	GAS	▽	NORTH OR WEST DITCH	▽
—	GAS	—	LEGEND-PLAN	—	SOUTH OR EAST DITCH	—
—	EXISTING	—	PROPOSED	—	LEGEND-PROFILE	—

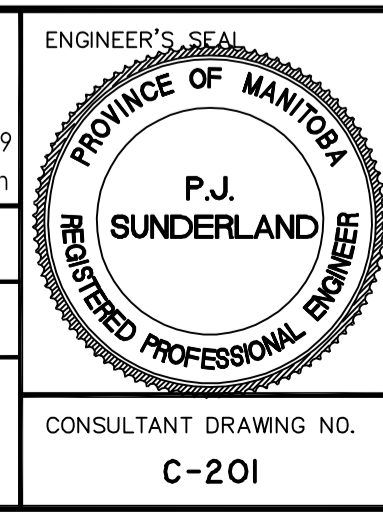
**LOCATION APPROVED UNDERGROUND STRUCTURES**  
 SUPV. U/G STRUCTURES COMMITTEE DATE  
 NOTE: LOCATION OF UNDERGROUND STRUCTURES AS SHOWN ARE BASED ON THE BEST INFORMATION AVAILABLE BUT NO GUARANTEE IS GIVEN THAT ALL EXISTING UTILITIES ARE SHOWN OR THAT THE GIVEN LOCATIONS ARE EXACT. CONFIRMATION OF EXISTENCE AND EXACT LOCATION OF ALL SERVICES MUST BE OBTAINED FROM THE INDIVIDUAL UTILITIES BEFORE PROCEEDING WITH CONSTRUCTION.

NO.	REVISIONS	DATE	BY
1	SUBMITTED FOR CITY REVIEW	19.02.21	P.J.S.

**Stantec**  
 500 - 311 Portage Avenue, Winnipeg MB Canada R3B 2B9  
 Tel. 204.489.5900 Fax. 204.453.9012 www.stantec.com

DESIGNED BY: P.J.S. CHECKED BY: D.P.M.  
 DRAWN BY: L.D. APPROVED BY: P.J.S.  
 HOR. SCALE: 1:500  
 VERTICAL: 1:50  
 RELEASED FOR CONSTRUCTION: DATE  
 DATE 2018 .10 .15

**ENGINEERS GEOSCIENTISTS MANITOBA**  
 Certificate of Authorization  
 Stantec Consulting Ltd.  
 No. 1301



**THE CITY OF WINNIPEG**  
 ST. BONIFACE INDUSTRIAL PARK - PHASE 2 - STAGE 5  
**BLACK DIAMOND BOULEVARD**  
 875m W OF MAZENOD ROAD TO  
 725m W OF MAZENOD ROAD

SHEET 4 OF 12  
 CAD FILE DRAWING NUMBER 09351C-201\_PH2-5.DWG  
 CITY DRAWING NUMBER

VA:1680 d:\h\1680351\0300\_dfr\h\1680351\_0302\_sheret\_files\02\_civil\phase\_2-stage\_5\09351c-201\_ph2-5.dwg  
 2019/02/25 9:41 AM BY: davek, Labanada