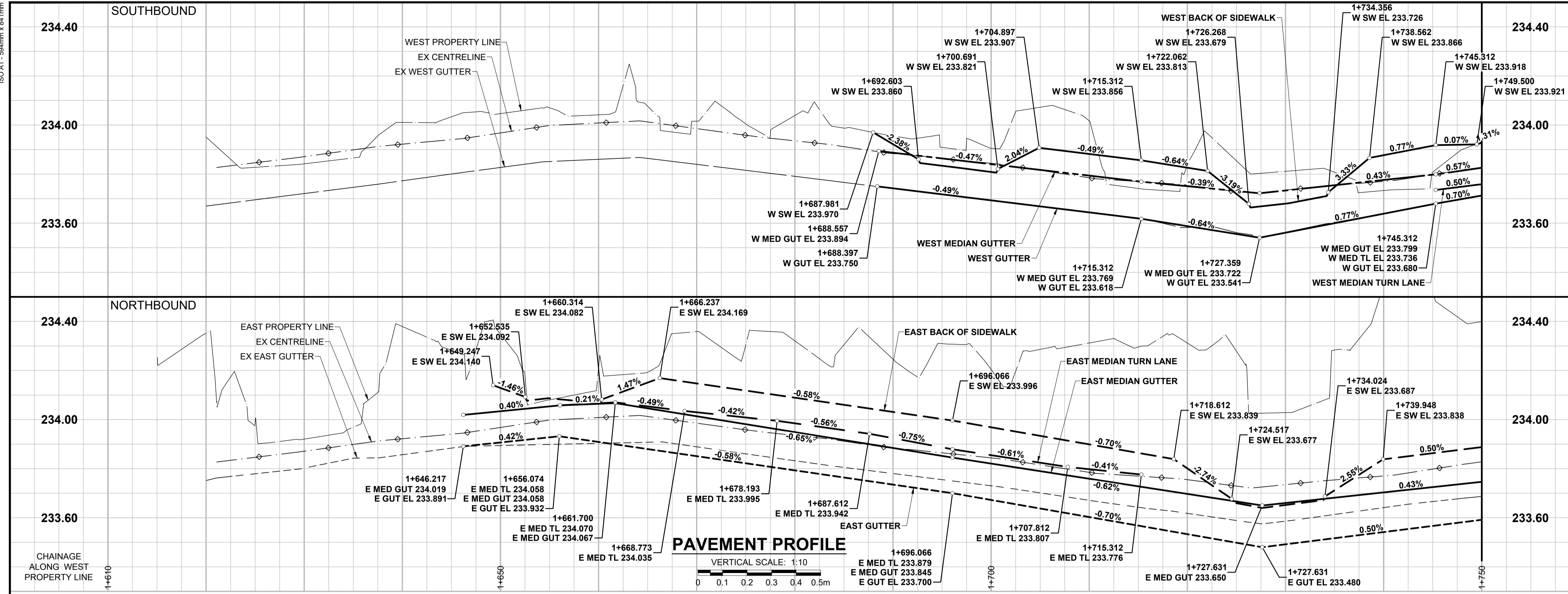
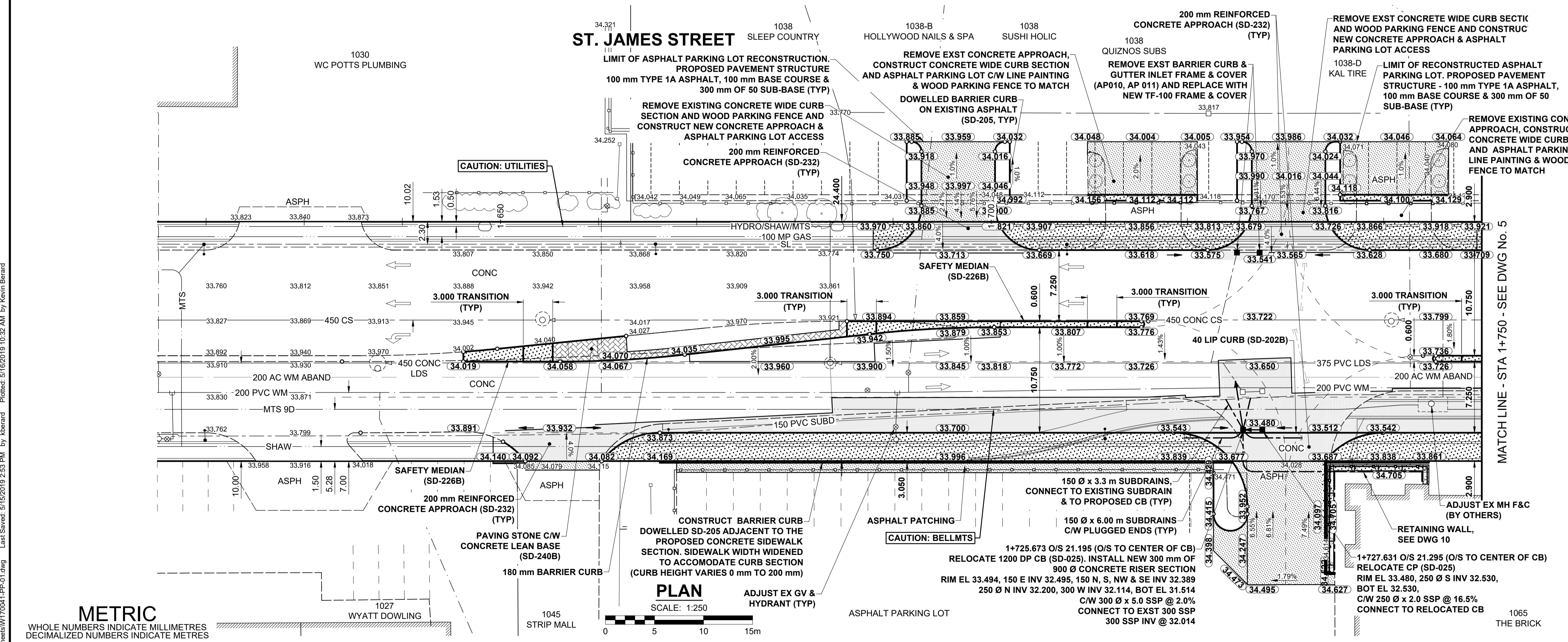


C:\Winnipeg\Proj\700414\Design\Drawings\06\Sheets\W700414-PP-01.dwg  
 Last Saved: 21/05/2019 2:53 PM by kbeard  
 Plotted: 21/05/2019 10:32 AM by Kevin Beard  
 ISO A1 - 594mm x 841mm



- NOTES**
- ADJUST MH AND CB RIMS TO NEW GRADES.
  - CONTRACTOR TO REGRADE/RENEW EXISTING PRIVATE SIDEWALKS TO LIMITS AS SHOWN. SIDEWALKS TO BE RENEWED WITH CONCRETE UNLESS NOTED OTHERWISE. CONTRACTOR TO TAKE PRECAUTIONARY STEPS TO PROTECT EXISTING TREES WITHIN THE LIMITS OF CONSTRUCTION FROM DAMAGE FROM CONSTRUCTION ACTIVITIES AS OUTLINED IN THE SPECIFICATIONS.
  - MODIFIED BARRIER CURB TO BE CONSTRUCTED AT ALL INTERSECTION RADI, BACK LANE RADI AND BULLNOSES.
  - CONTRACTOR TO CONFIRM THE LOCATION OF ALL UTILITIES/SERVICES IN THE FIELD PRIOR TO CONSTRUCTION.
  - ADD 200.000m TO ABBREVIATED ELEVATIONS TO OBTAIN GEODETIC ELEVATIONS.
  - CB SD-024 OFFSETS ARE DIMENSIONED TO BACK OF CURB. CB SD-025 OFFSETS ARE DIMENSIONED O/C.
  - ALL DIMENSIONS TO BACK OF CURB.



**METRIC**  
WHOLE NUMBERS INDICATE MILLIMETRES  
DECIMALIZED NUMBERS INDICATE METRES

| EXISTING | LEGEND - PLAN           | NEW | EXISTING | LEGEND - PLAN         | NEW      | EXISTING | LEGEND - PLAN        | NEW |
|----------|-------------------------|-----|----------|-----------------------|----------|----------|----------------------|-----|
| ---      | GAS                     | --- | ○        | MANHOLE               | ●        | ---      | CONCRETE PAVEMENT    | --- |
| ---      | MTS HANDWELL/PEDESTAL   | --- | □        | CATCH BASIN/CATCH PIT | ■        | ---      | CONC SIDEWALK/MEDIAN | --- |
| ---      | HYDRO HANDWELL/CABINET  | --- | △        | CURB INLET WITH BOX   | ▲        | ---      | ASPHALT PAVEMENT     | --- |
| ---      | CATV/FIBRE OPTIC        | --- | ○        | TREE                  | ○        | ---      | PAVING STONE         | --- |
| ---      | TRAFFIC SIGNALS/PIT     | --- | ⊕        | TEST HOLE             | ⊕        | ---      | GRAVEL               | --- |
| ---      | LAND DRAINAGE SEWER     | --- | TH-12    | PROPERTY LINE         | ---      | ---      | RAMP CURB            | --- |
| ---      | SANITARY/COMBINED SEWER | --- | +        | SURVEY BAR            | ---      | ---      | PLANING/REMOVAL      | --- |
| ---      | CB LEAD/SSP/DCP         | --- | +        | FENCE                 | ---      | ---      |                      | --- |
| ---      | WATERMAIN               | --- | ---      | BOC/EDGE OF PAVEMENT  | ---      | ---      |                      | --- |
| ---      | SUBDRAIN                | --- | 33.000   | ELEVATION             | (33.333) | ---      |                      | --- |
| ---      | DITCH                   | --- | ---      | TRAFFIC SIGN          | ---      | ---      |                      | --- |

**PLAN**  
SCALE: 1:250

| EXISTING | LEGEND - PLAN        | NEW | EXISTING | LEGEND - PLAN        | NEW |
|----------|----------------------|-----|----------|----------------------|-----|
| ---      | CONCRETE PAVEMENT    | --- | ---      | CONCRETE PAVEMENT    | --- |
| ---      | CONC SIDEWALK/MEDIAN | --- | ---      | CONC SIDEWALK/MEDIAN | --- |
| ---      | ASPHALT PAVEMENT     | --- | ---      | ASPHALT PAVEMENT     | --- |
| ---      | PAVING STONE         | --- | ---      | PAVING STONE         | --- |
| ---      | GRAVEL               | --- | ---      | GRAVEL               | --- |
| ---      | RAMP CURB            | --- | ---      | RAMP CURB            | --- |
| ---      | PLANING/REMOVAL      | --- | ---      | PLANING/REMOVAL      | --- |

**LOCATION APPROVED**  
UNDERGROUND STRUCTURES

SUPR. U/G STRUCTURES COMMITTEE DATE

**NOTE:**  
LOCATION OF UNDERGROUND STRUCTURES AS SHOWN ARE BASED ON THE BEST INFORMATION AVAILABLE BUT NO GUARANTEE IS GIVEN THAT ALL EXISTING UTILITIES ARE SHOWN OR THAT THE GIVEN LOCATIONS ARE EXACT. CONFIRMATION OF EXISTENCE AND EXACT LOCATION OF ALL SERVICES MUST BE OBTAINED FROM THE INDIVIDUAL UTILITIES BEFORE PROCEEDING WITH CONSTRUCTION.

| NO. | REVISIONS                | DATE     | BY  |
|-----|--------------------------|----------|-----|
| A   | ISSUED FOR TENDER        | 19/05/17 | RPB |
| B   | ISSUED FOR CLIENT REVIEW | 18/06/07 | RPB |

| DESIGNED BY | WRJ      | CHECKED BY                | RPB |
|-------------|----------|---------------------------|-----|
| DRAWN BY    | KMB      | APPROVED BY               | BWB |
| DATE        | 18/06/07 | RELEASED FOR CONSTRUCTION |     |

PROFESSIONAL'S SEAL  
PROVINCE OF MANITOBA  
REGISTERED PROFESSIONAL ENGINEER  
**R.P. BRUCE**  
CONSULTANT FILE NAME  
W170041-PP-01.dwg

**THE CITY OF WINNIPEG**  
PUBLIC WORKS DEPARTMENT  
ENGINEERING DIVISION

**2019 REGIONAL STREET RENEWAL PROGRAM**  
**ST. JAMES STREET RECONSTRUCTION**  
50 m N OF ELLICE AVE TO 150 m N OF SARGENT AVE

CITY DRAWING NUMBER: P-3508-04  
SHEET 4 OF 16  
DRAWING NUMBER: 4

**PAVING & GRADING**  
ST JAMES STREET - STA 1+615 TO STA 1+750

TENDER 266-2019

**ENGINEERS**  
**SCIENTISTS**  
MANITOBA  
Certificate of Authorization  
MORRISON HERSHFIELD  
No. 1736