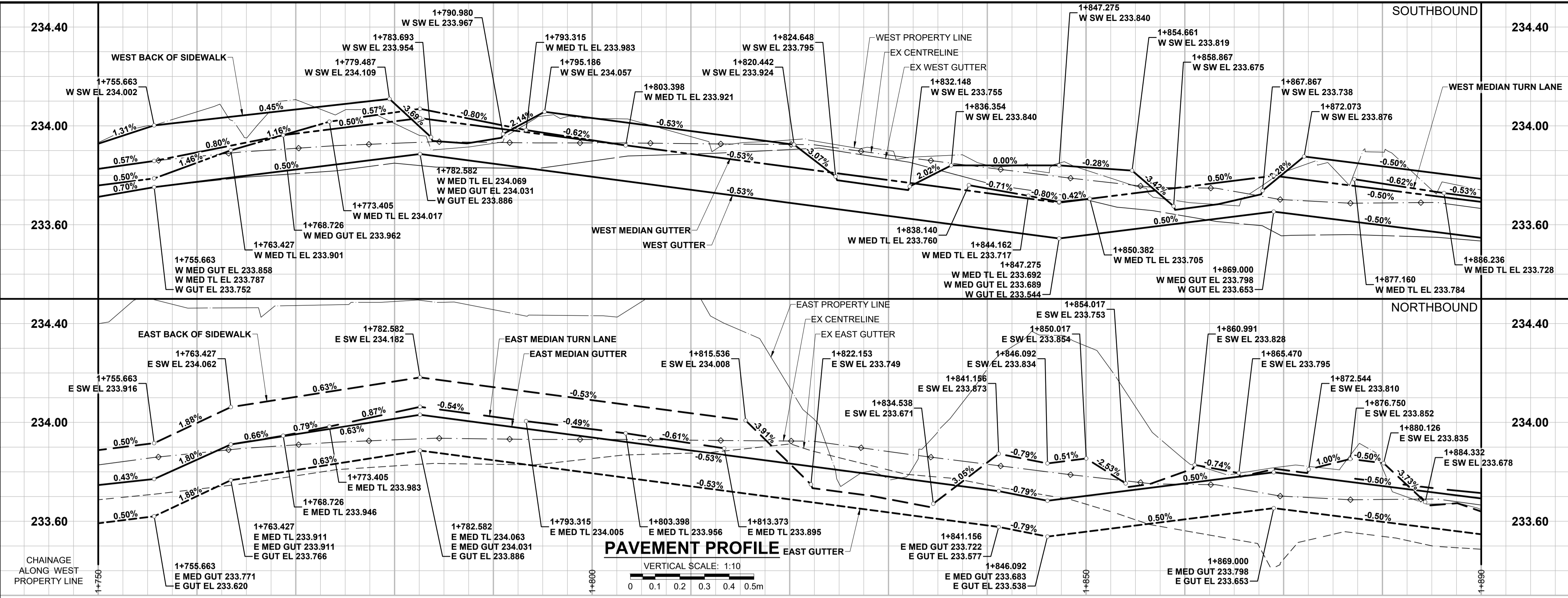
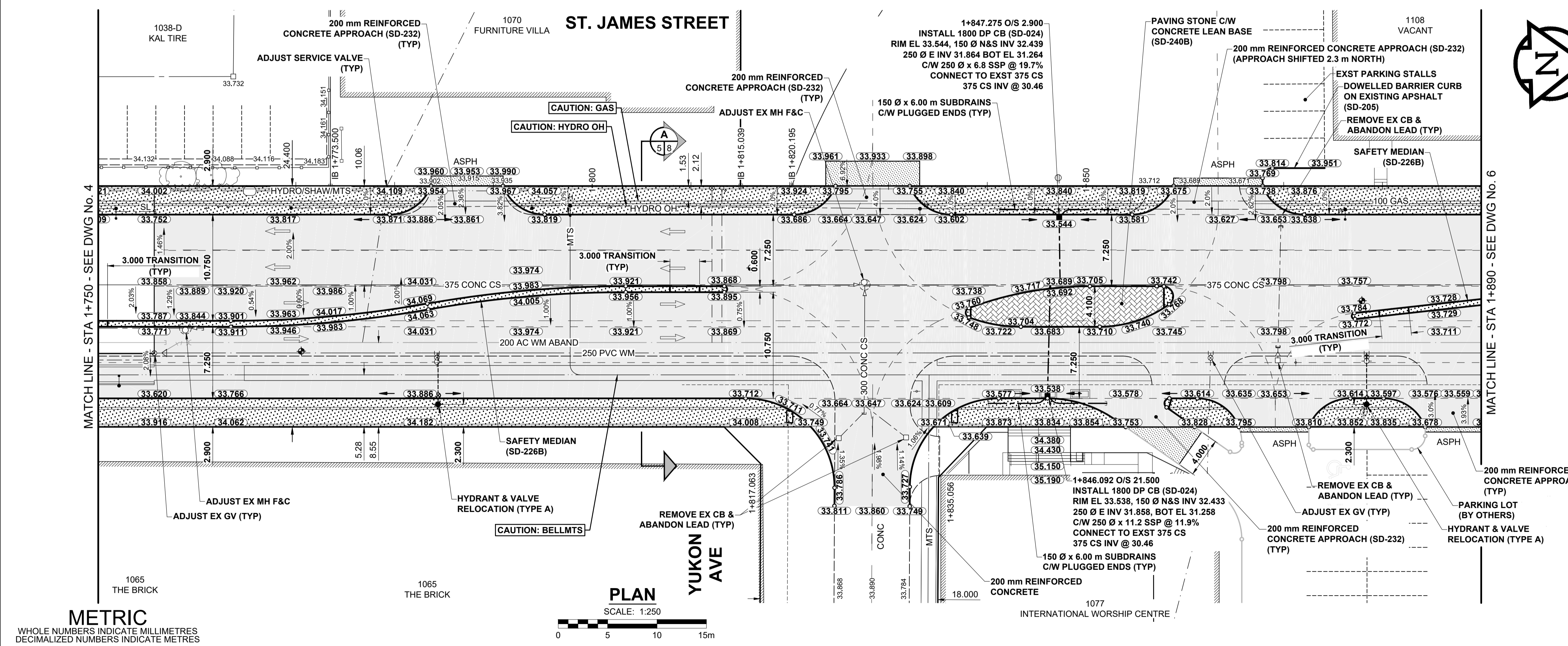


C:\Winnipeg\Proj\7004\14\Drawings\06\Sheets\WT7004-1-PP-02.dwg
 Last Saved: 5/15/2019 2:55 PM by kbarad
 Plotted: 5/15/2019 4:02 PM by Kevin Barad
 ISO A1 - 594mm x 841mm



- NOTES**
- ADJUST MH AND CB RIMS TO NEW GRADES.
 - CONTRACTOR TO REGRADE/RENEW EXISTING PRIVATE SIDEWALKS TO LIMITS AS SHOWN. SIDEWALKS TO BE RENEWED WITH CONCRETE UNLESS NOTED OTHERWISE. CONTRACTOR TO TAKE PRECAUTIONARY STEPS TO PROTECT EXISTING TREES WITHIN THE LIMITS OF CONSTRUCTION FROM DAMAGE FROM CONSTRUCTION ACTIVITIES AS OUTLINED IN THE SPECIFICATIONS.
 - MODIFIED BARRIER CURB TO BE CONSTRUCTED AT ALL INTERSECTION RADI, BACK LANE RADI AND BULLNOSES.
 - CONTRACTOR TO CONFIRM THE LOCATION OF ALL UTILITIES/SERVICES IN THE FIELD PRIOR TO CONSTRUCTION.
 - ADD 200.000m TO ABBREVIATED ELEVATIONS TO OBTAIN GEODETIC ELEVATIONS.
 - CB SD-024 OFFSETS ARE DIMENSIONED TO BACK OF CURB.
 - CB SD-025 OFFSETS ARE DIMENSIONED O/C.
 - ALL DIMENSIONS TO BACK OF CURB.



METRIC
WHOLE NUMBERS INDICATE MILLIMETRES
DECIMAL NUMBERS INDICATE METRES

EXISTING	LEGEND - PLAN	NEW	EXISTING	LEGEND - PLAN	NEW
---	GAS	---	○	MANHOLE	●
---	MTS HANDWELL/PEDESTAL	---	□	CATCH BASIN/CATCH PIT	■
---	HYDRO HANDWELL/CABINET	---	△	CURB INLET WITH BOX	▲
---	CATV/FIBRE OPTIC	---	○	TREE	○
---	TRAFFIC SIGNALS/PIT	---	⊕	TEST HOLE	⊕
---	LAND DRAINAGE SEWER	---	—	PROPERTY LINE	---
---	SANITARY/COMBINED SEWER	---	—	SURVEY BAR	---
---	CB LEAD/SSP/DCP	---	—	FENCE	---
---	WATERMAIN	---	---	BOC/EDGE OF PAVEMENT	---
---	SUBDRAIN	---	33.000	ELEVATION	(33.333)
---	DITCH	---	→	TRAFFIC SIGN	→

EXISTING	LEGEND - PLAN	NEW
---	CONCRETE PAVEMENT	---
---	CONC SIDEWALK/MEDIAN	---
---	ASPHALT PAVEMENT	---
---	PAVING STONE	---
---	GRAVEL	---
---	RAMP CURB	---
---	PLANING/REMOVAL	---

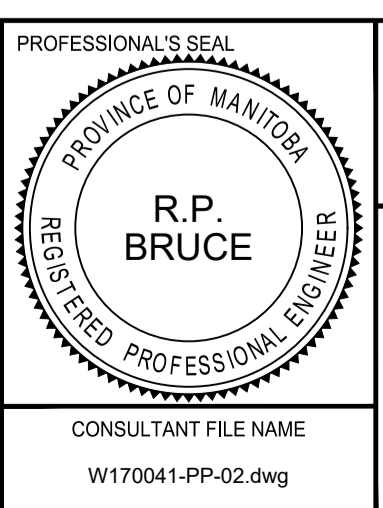
LOCATION APPROVED
UNDERGROUND STRUCTURES

SUPR. U/G STRUCTURES COMMITTEE DATE

NOTE:
LOCATION OF UNDERGROUND STRUCTURES AS SHOWN ARE BASED ON THE BEST INFORMATION AVAILABLE BUT NO GUARANTEE IS GIVEN THAT ALL EXISTING UTILITIES ARE SHOWN OR THAT THE GIVEN LOCATIONS ARE EXACT. CONFIRMATION OF EXISTENCE AND EXACT LOCATION OF ALL SERVICES MUST BE OBTAINED FROM THE INDIVIDUAL UTILITIES BEFORE PROCEEDING WITH CONSTRUCTION.

No.	REVISIONS	DATE	BY
B	ISSUED FOR TENDER	19/05/17	RPB
A	ISSUED FOR CLIENT REVIEW	18/06/07	RPB

DESIGNED BY	WRJ	CHECKED BY	RPB
DRAWN BY	KMB	APPROVED BY	BWB
DATE	18/06/07	RELEASED FOR CONSTRUCTION	



THE CITY OF WINNIPEG
PUBLIC WORKS DEPARTMENT
ENGINEERING DIVISION

2019 REGIONAL STREET RENEWAL PROGRAM
ST. JAMES STREET RECONSTRUCTION
50 m N OF ELLICE AVE TO 150 m N OF SARGENT AVE

CITY DRAWING NUMBER: P-3508-05
SHEET 5 OF 16
DRAWING NUMBER: 5

PAVING & GRADING
ST JAMES STREET - STA 1+750 TO STA 1+890



TENDER 266-2019