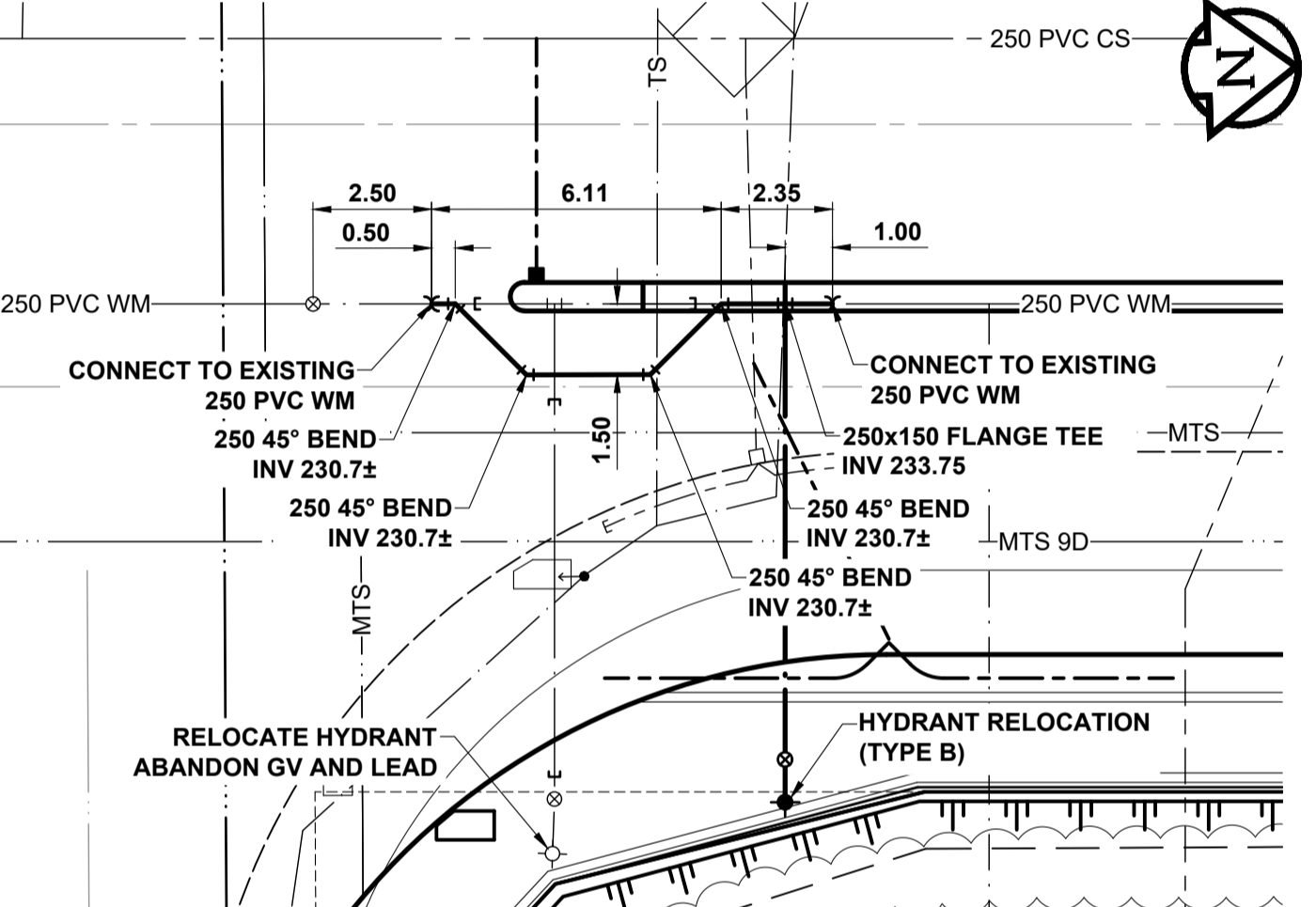
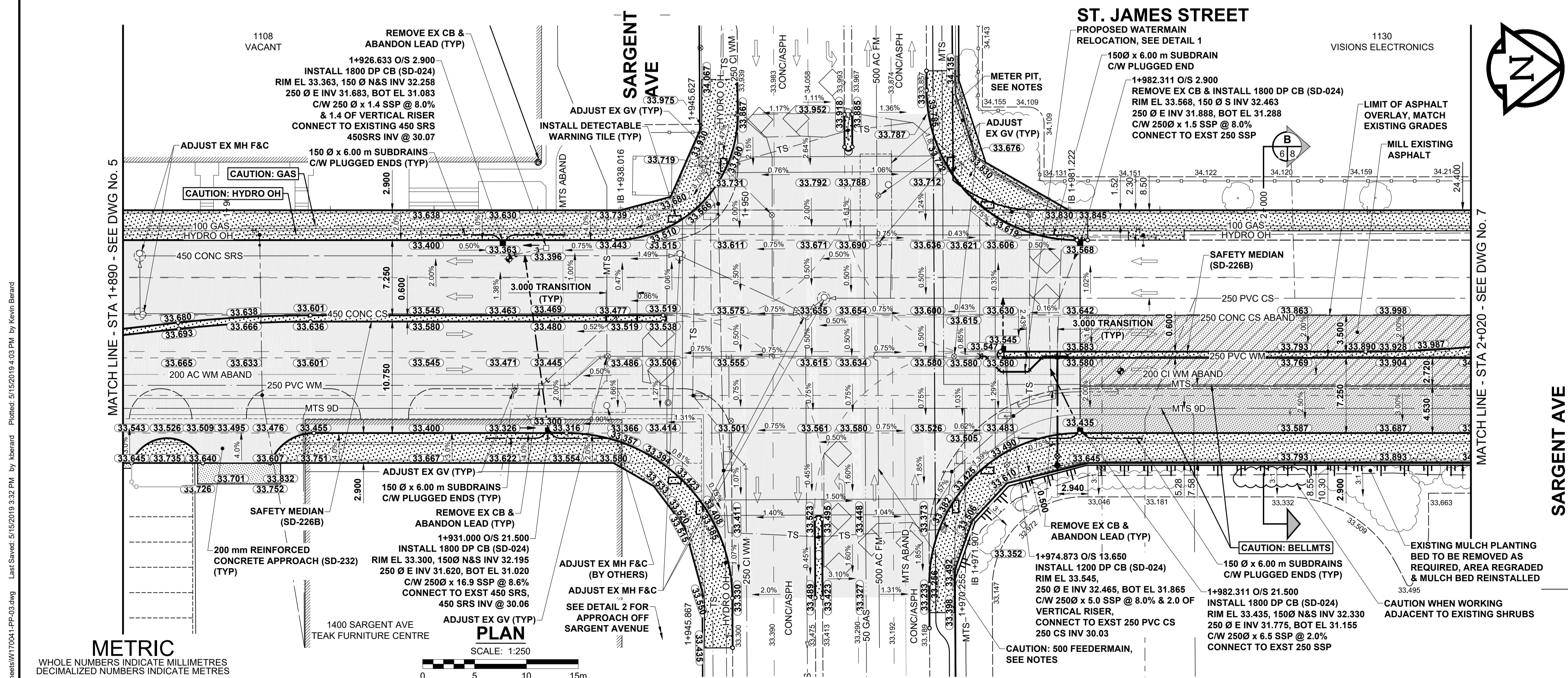
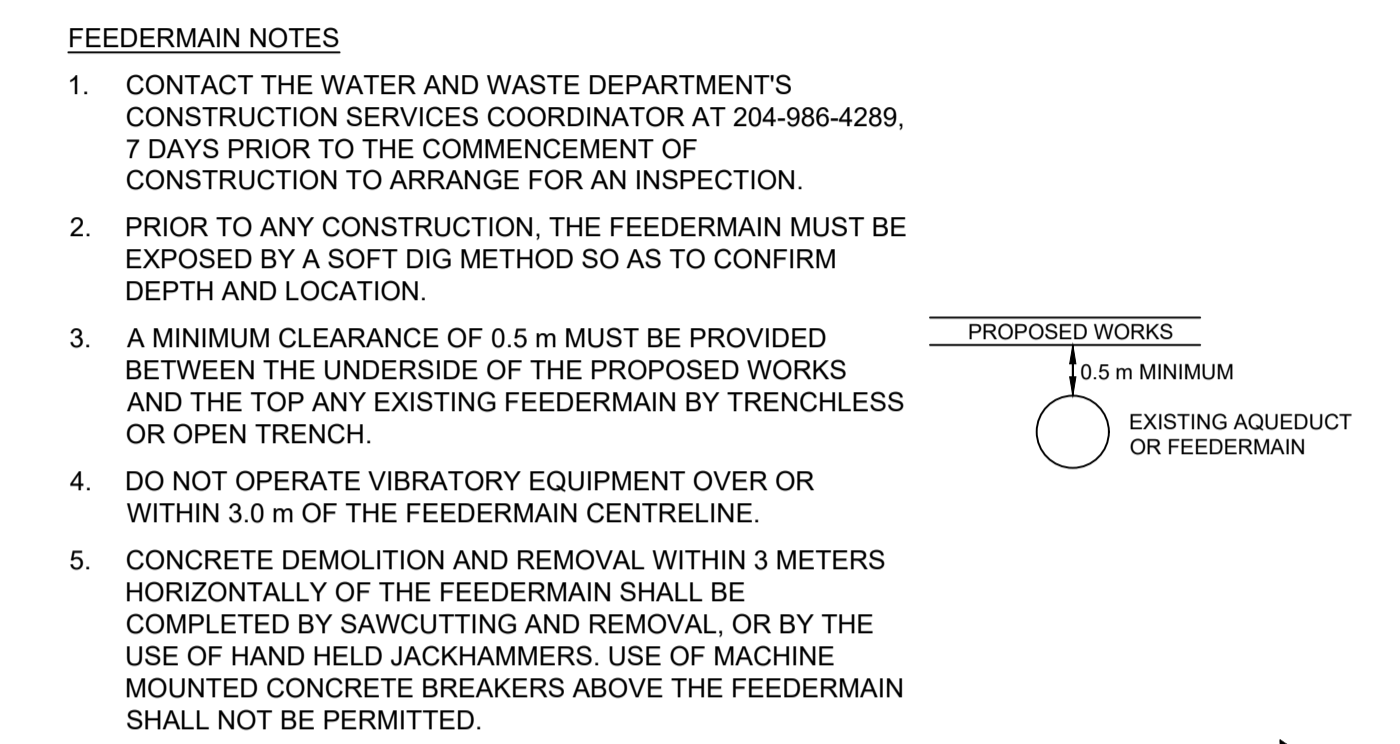


- NOTES**
- ADJUST MH AND CB RIMS TO NEW GRADES.
 - CONTRACTOR TO REGRADE/RENEW EXISTING PRIVATE SIDEWALKS TO LIMITS AS SHOWN. SIDEWALKS TO BE RENEWED WITH CONCRETE UNLESS NOTED OTHERWISE.
 - CONTRACTOR TO TAKE PRECAUTIONARY STEPS TO PROTECT EXISTING TREES WITHIN THE LIMITS OF CONSTRUCTION FROM DAMAGE FROM CONSTRUCTION ACTIVITIES AS OUTLINED IN THE SPECIFICATIONS.
 - MODIFIED BARRIER CURB TO BE CONSTRUCTED AT ALL INTERSECTION RADI, BACK LANE RADI AND BULLNOSES. CONTRACTOR TO CONFIRM THE LOCATION OF ALL UTILITIES/SERVICES IN THE FIELD PRIOR TO CONSTRUCTION.
 - ADD 200.000m TO ABBREVIATED ELEVATIONS TO OBTAIN GEODETIC ELEVATIONS.
 - CB SD-024 OFFSETS ARE DIMENSIONED TO BACK OF CURB. CB SD-025 OFFSETS ARE DIMENSIONED O/C.
 - ALL DIMENSIONS TO BACK OF CURB.
 - A MINIMUM OF 100 mm OF RIGID POLYSTYRENE INSULATION IS REQUIRED ON TOP OF EXISTING METER PIT AND AROUND THE SIDEWALLS OF THE PIT EXTENDING TO A DEPTH OF 2.0 m BELOW FINISHED GRADE.
- FEEDERMAIN NOTES**
- CONTACT THE WATER AND WASTE DEPARTMENT'S CONSTRUCTION SERVICES COORDINATOR AT 204-986-4289, 7 DAYS PRIOR TO THE COMMENCEMENT OF CONSTRUCTION TO ARRANGE FOR AN INSPECTION.
 - PRIOR TO ANY CONSTRUCTION, THE FEEDERMAIN MUST BE EXPOSED BY A SOFT DIG METHOD SO AS TO CONFIRM DEPTH AND LOCATION.
 - A MINIMUM CLEARANCE OF 0.5 m MUST BE PROVIDED BETWEEN THE UNDERSIDE OF THE PROPOSED WORKS AND THE TOP ANY EXISTING FEEDERMAIN BY TRENCHLESS OR OPEN TRENCH.
 - DO NOT OPERATE VIBRATORY EQUIPMENT OVER OR WITHIN 3.0 m OF THE FEEDERMAIN CENTRELINE.
 - CONCRETE DEMOLITION AND REMOVAL WITHIN 3 METERS HORIZONTALLY OF THE FEEDERMAIN SHALL BE COMPLETED BY SAWCUTTING AND REMOVAL, OR BY THE USE OF HAND HELD JACKHAMMERS. USE OF MACHINE MOUNTED CONCRETE BREAKERS ABOVE THE FEEDERMAIN SHALL NOT BE PERMITTED.



METRIC
WHOLE NUMBERS INDICATE MILLIMETRES
DECIMAL NUMBERS INDICATE METRES

EXISTING	LEGEND - PLAN	NEW	EXISTING	LEGEND - PLAN	NEW	EXISTING	LEGEND - PLAN	NEW
---	GAS	---	○	MANHOLE	●	---	CONCRETE PAVEMENT	---
---	HYDRO HANDWELL/CABINET	---	□	CATCH BASIN/CATCH PIT	■	---	CONC SIDEWALK/MEDIAN	---
---	CATV/FIBRE OPTIC	---	△	CURB INLET WITH BOX	▲	---	ASPHALT PAVEMENT	---
---	TRAFFIC SIGNALS/PIT	---	○	TREE	○	---	PAVING STONE	---
---	LAND DRAINAGE SEWER	---	⊕	TEST HOLE	⊕	---	GRAVEL	---
---	SANITARY/COMBINED SEWER	---	⊕	PROPERTY LINE	---	---	RAMP CURB	---
---	CB LEAD/SSP/DCP	---	⊕	SURVEY BAR	---	---	PLANING/REMOVAL	---
---	WATERMAIN	---	⊕	FENCE	---	---		---
---	SUBDRAIN	---	⊕	BOC/EDGE OF PAVEMENT	---	---		---
---	DITCH	---	33.000	ELEVATION	33.333	---		---
---		---	---	TRAFFIC SIGN	---	---		---

PLAN
SCALE: 1:250

EXISTING	LEGEND - PLAN	NEW	EXISTING	LEGEND - PLAN	NEW
---	GAS	---	○	MANHOLE	●
---	HYDRO HANDWELL/CABINET	---	□	CATCH BASIN/CATCH PIT	■
---	CATV/FIBRE OPTIC	---	△	CURB INLET WITH BOX	▲
---	TRAFFIC SIGNALS/PIT	---	○	TREE	○
---	LAND DRAINAGE SEWER	---	⊕	TEST HOLE	⊕
---	SANITARY/COMBINED SEWER	---	⊕	PROPERTY LINE	---
---	CB LEAD/SSP/DCP	---	⊕	SURVEY BAR	---
---	WATERMAIN	---	⊕	FENCE	---
---	SUBDRAIN	---	⊕	BOC/EDGE OF PAVEMENT	---
---	DITCH	---	33.000	ELEVATION	33.333
---		---	---	TRAFFIC SIGN	---

LOCATION APPROVED
UNDERGROUND STRUCTURES

SUPR. U/G STRUCTURES COMMITTEE DATE

NOTE:
LOCATION OF UNDERGROUND STRUCTURES AS SHOWN ARE BASED ON THE BEST INFORMATION AVAILABLE BUT NO GUARANTEE IS GIVEN THAT ALL EXISTING UTILITIES ARE SHOWN OR THAT THE GIVEN LOCATIONS ARE EXACT. CONFIRMATION OF EXISTENCE AND EXACT LOCATION OF ALL SERVICES MUST BE OBTAINED FROM THE INDIVIDUAL UTILITIES BEFORE PROCEEDING WITH CONSTRUCTION.

NO.	REVISIONS	DATE	BY
A	ISSUED FOR TENDER	19/05/17	RPB
B	ISSUED FOR CLIENT REVIEW	18/06/07	RPB

MORRISON HERSHFIELD

DESIGNED BY: WRJ
CHECKED BY: RPB

DRAWN BY: KMB
APPROVED BY: BWB

RELEASED FOR CONSTRUCTION

HOR SCALE: 1:250
VERT SCALE: 1:10

DATE: 18/06/07

PROFESSIONAL'S SEAL

PROVINCE OF MANITOBA

REGISTERED PROFESSIONAL ENGINEER

R.P. BRUCE

CONSULTANT FILE NAME: W170041-PP-03.dwg

THE CITY OF WINNIPEG
PUBLIC WORKS DEPARTMENT
ENGINEERING DIVISION

2019 REGIONAL STREET RENEWAL PROGRAM
ST. JAMES STREET RECONSTRUCTION
50 m N OF ELLICE AVE TO 150 m N OF SARGENT AVE

CITY DRAWING NUMBER: P-3508-06
SHEET 6 OF 16
DRAWING NUMBER: 6

PAVING & GRADING
ST JAMES STREET - STA 1+890 TO STA 2+020

TENDER 266-2019

C:\winnipeg\proj\w170041.dwg - 14 Design\1 Drawing\06 Sheets\W170041-PP-03.dwg Last Saved: 21/05/2019 3:32 PM by kbarad Plotted: 21/05/2019 4:03 PM by Kevin Barad