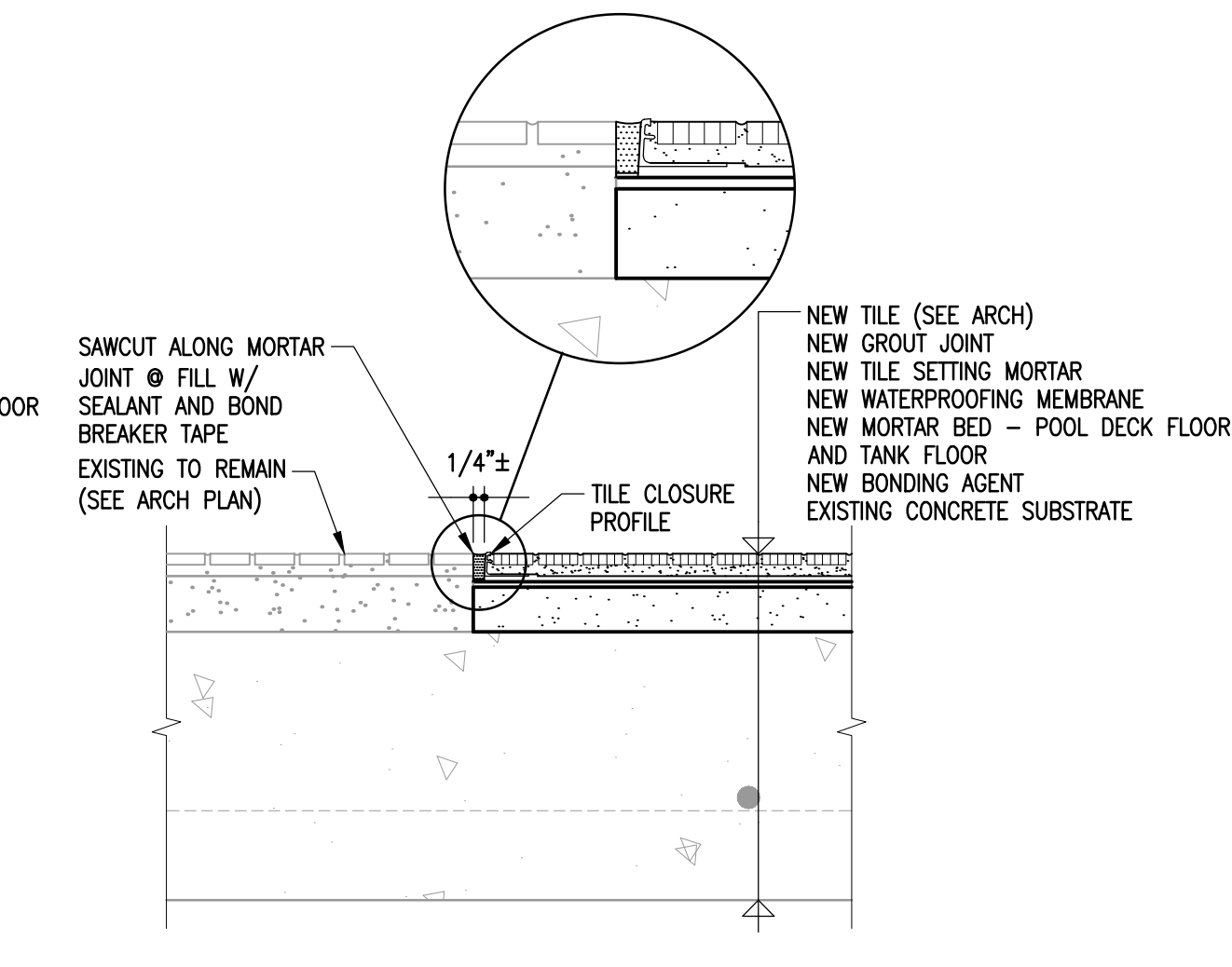
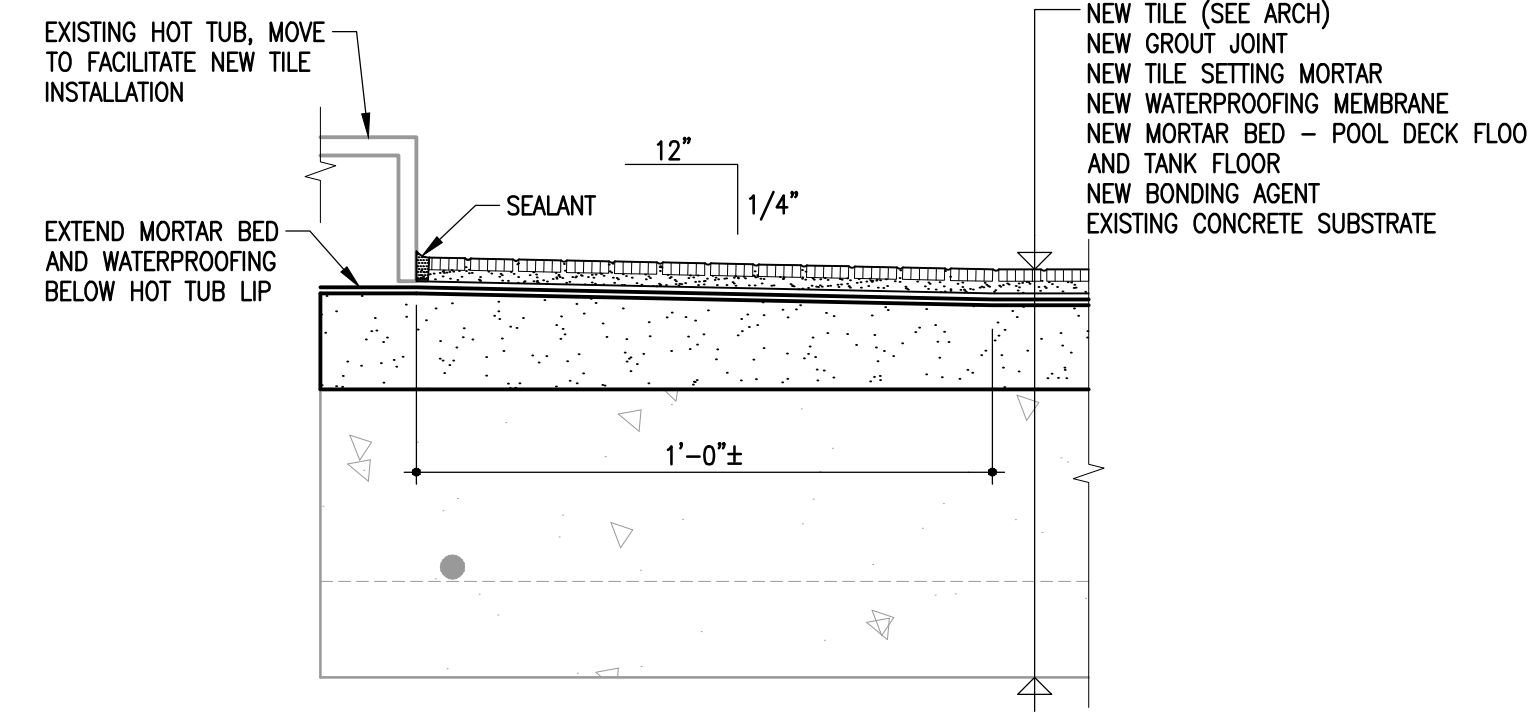


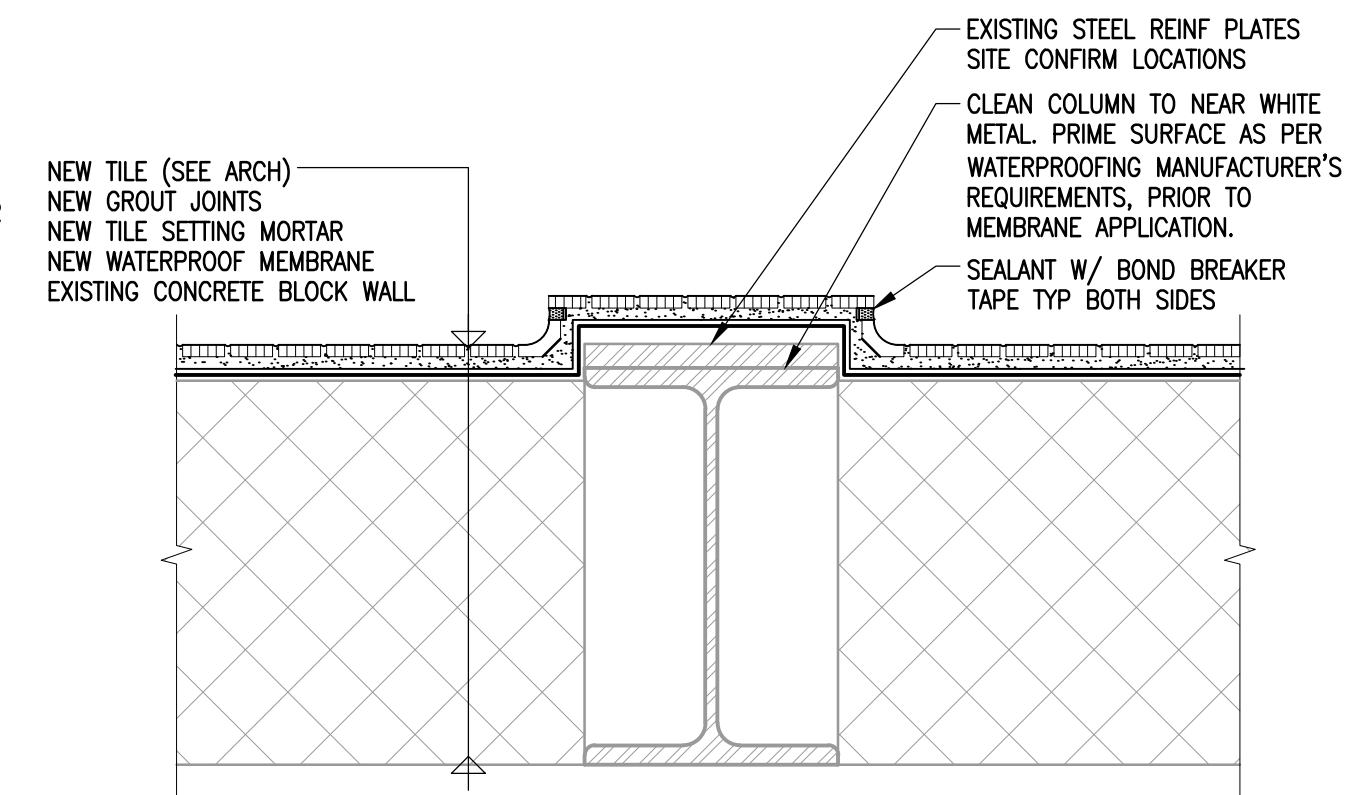
1 WALL TERMINATION DETAIL
S2.3 | S4.2 | 3 = 1'-0"



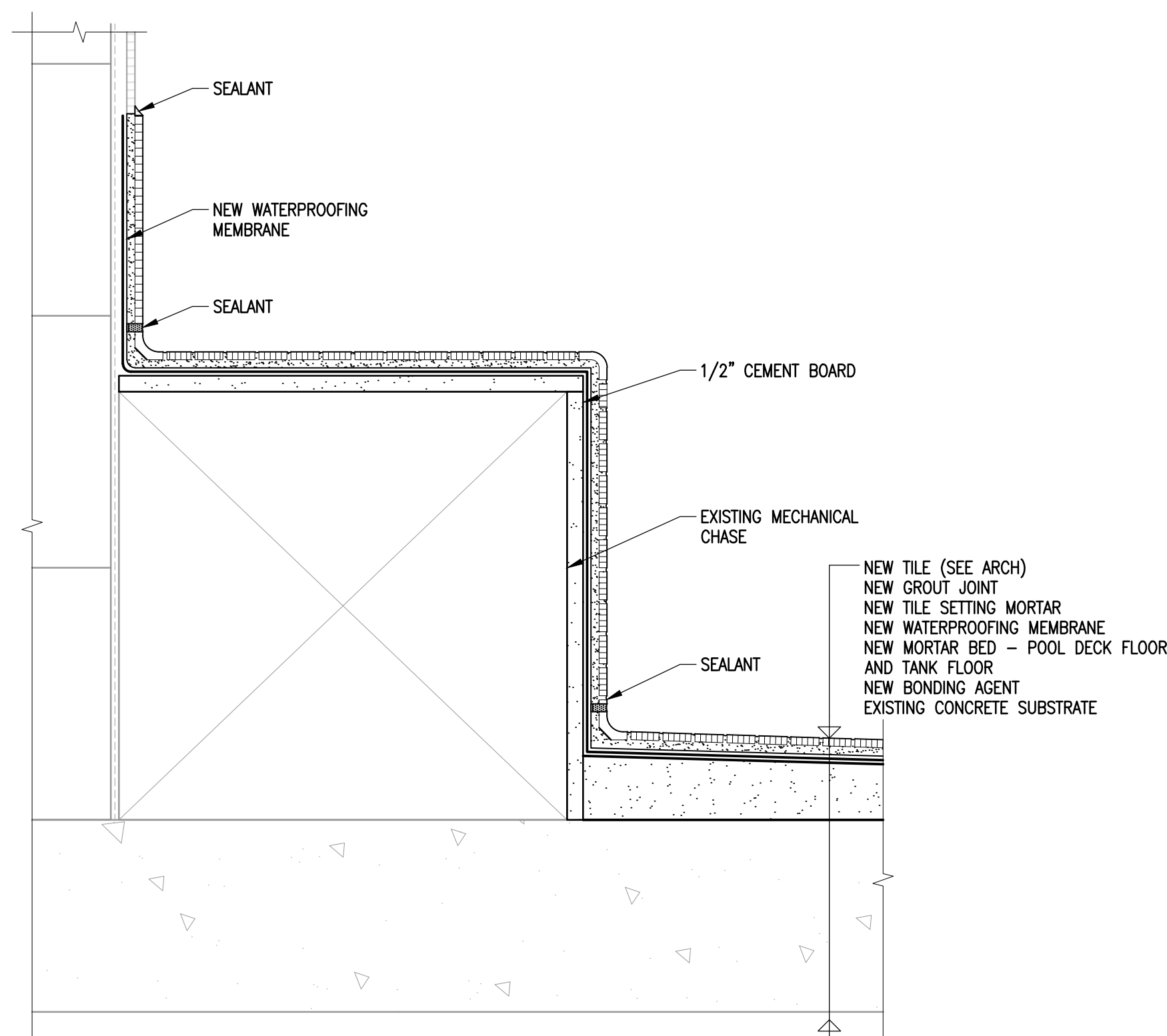
2 TRANSITION TO EXISTING DETAIL
S2.3 | S4.2 | 3 = 1'-0"



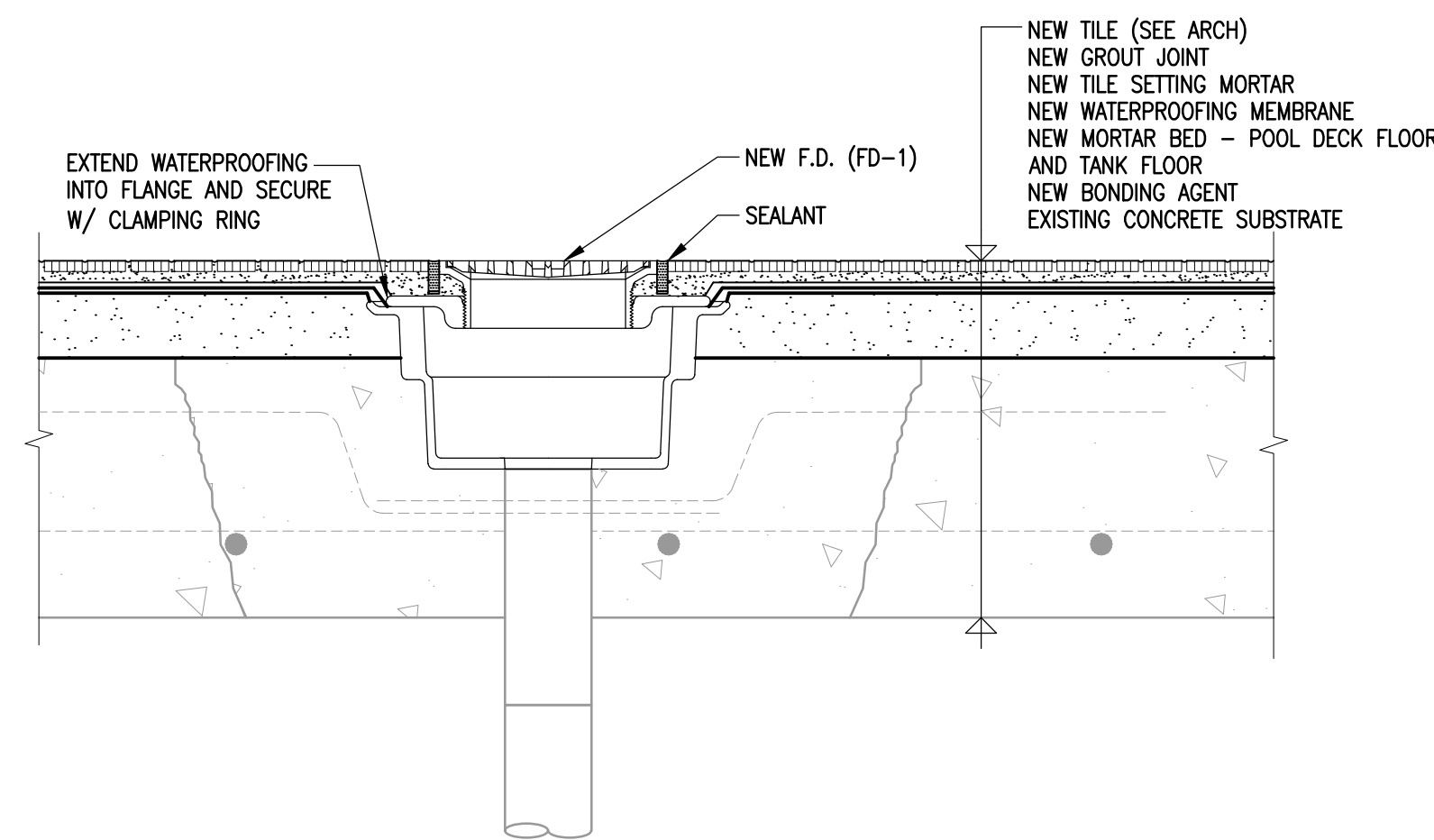
3 HOT TUB EDGE DETAIL
S2.3 | S4.2 | 3 = 1'-0"



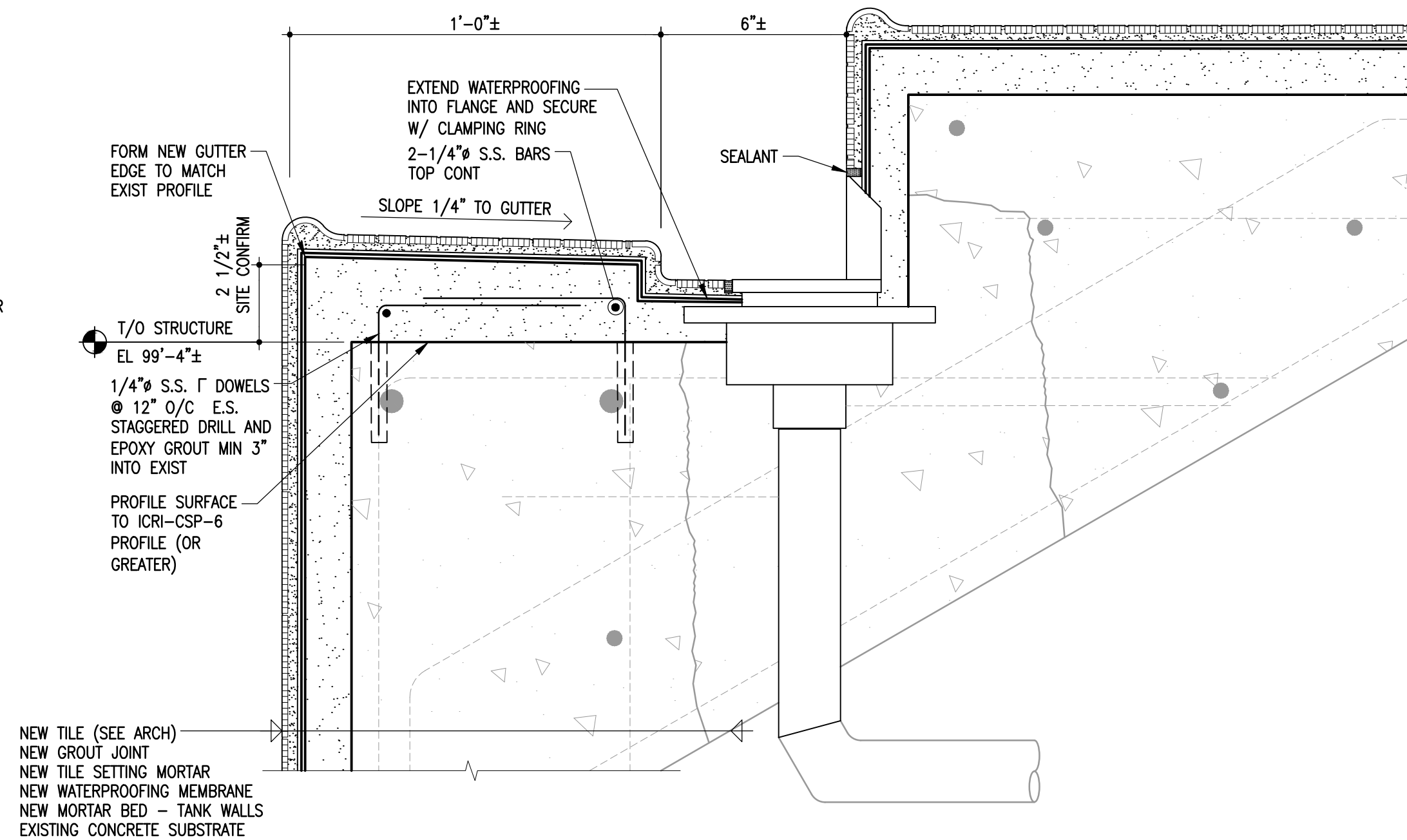
4 COLUMN PLAN DETAIL
S2.3 | S4.2 | 3 = 1'-0"



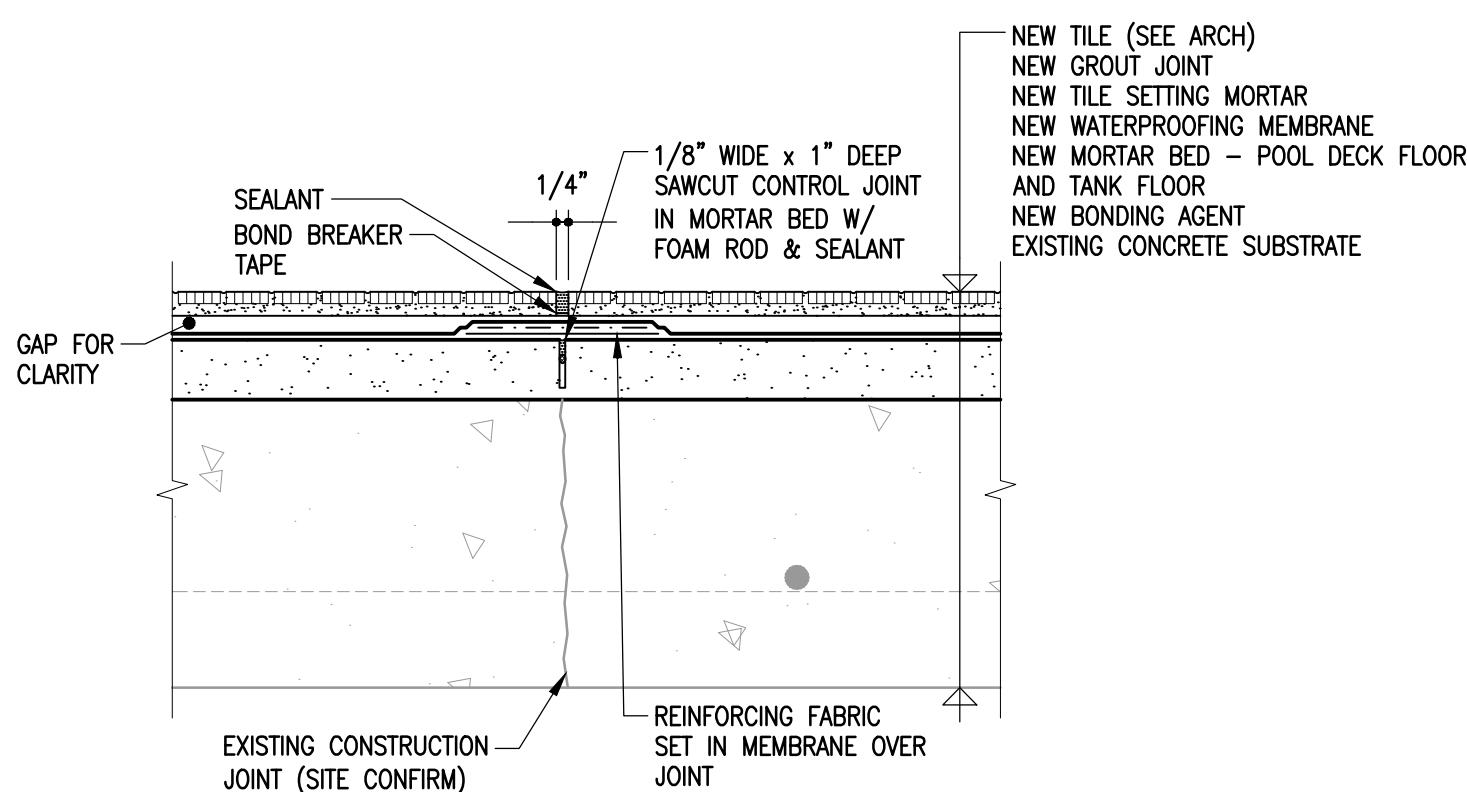
5 MECHANICAL DUCT DETAIL
S2.3 | S4.2 | 1 1/2" = 1'-0"



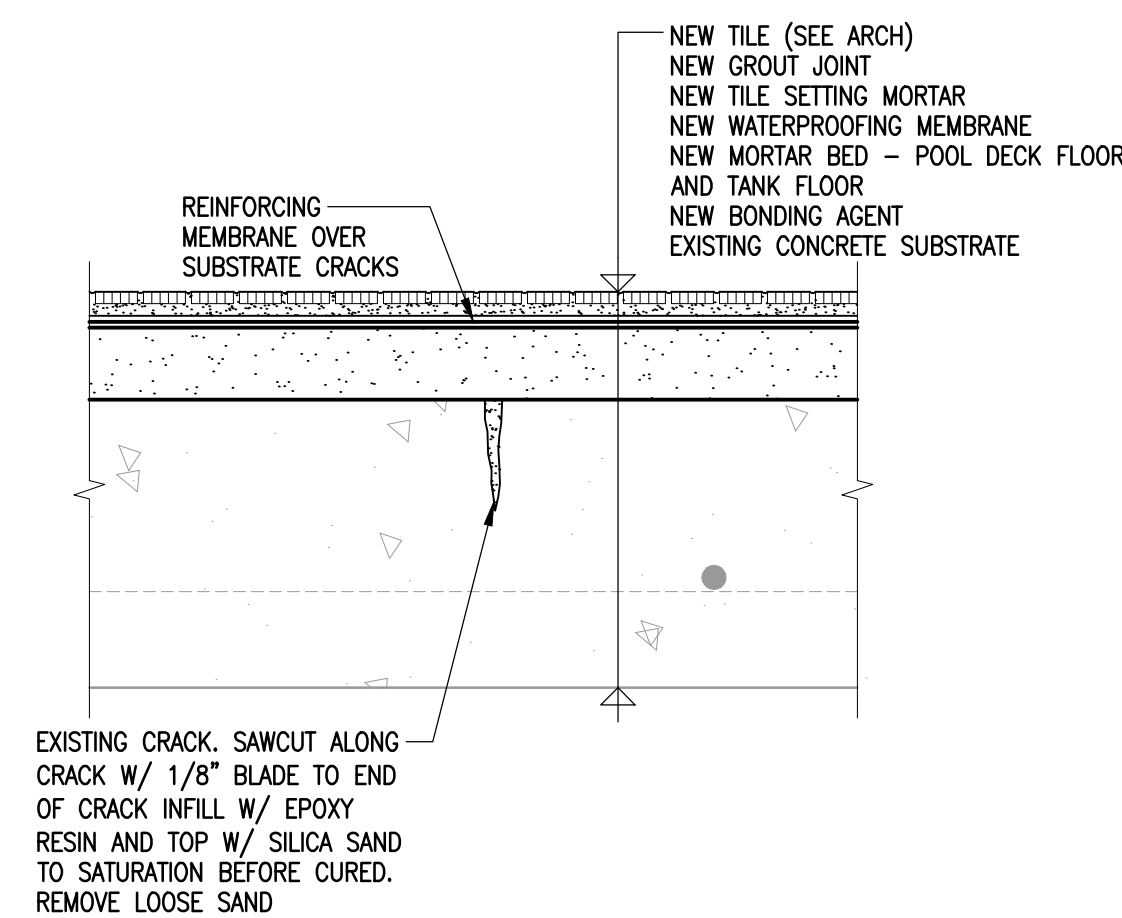
6 FLOOR DRAIN DETAIL
S2.3 | S4.2 | 1 1/2" = 1'-0"



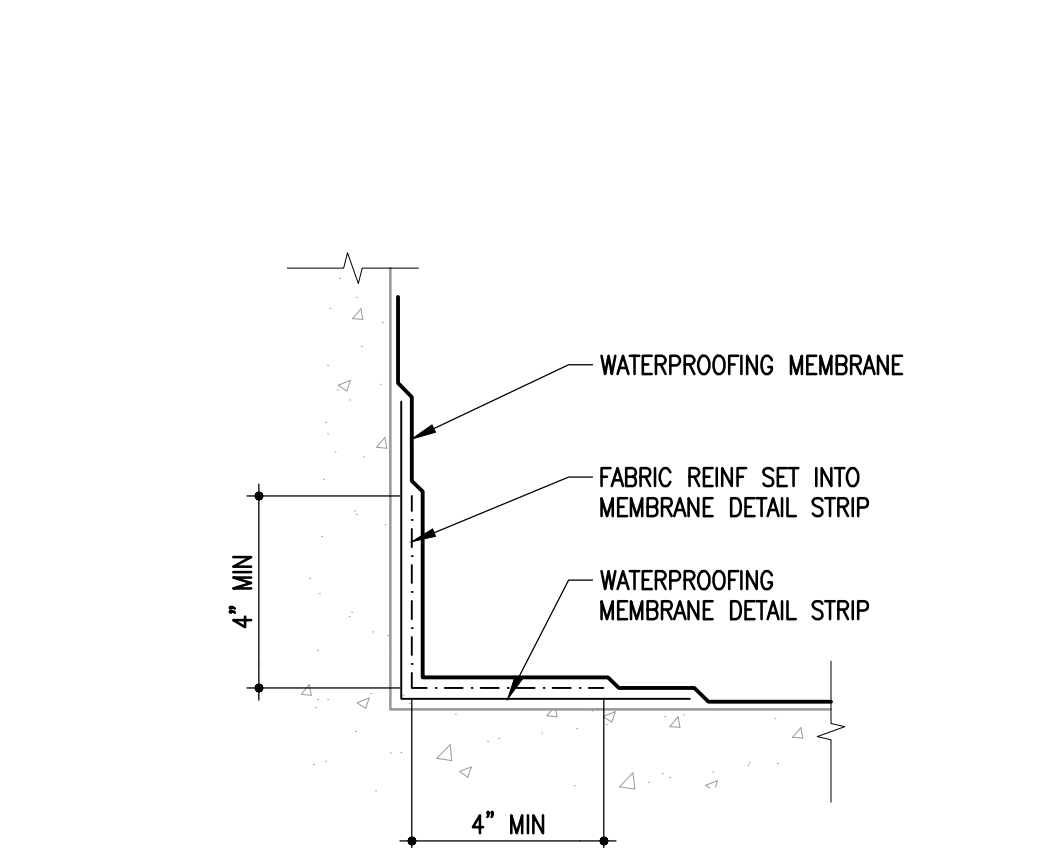
7 FLOOR DRAIN DETAIL
S2.3 | S4.2 | 1 1/2" = 1'-0"



A TILE CONTROL JOINT DETAIL
S4.2 | 3 = 1'-0"



B CRACK INFILL DETAIL
S4.2 | 3 = 1'-0"



C TYPICAL INSIDE CORNER DETAIL
S4.2 | 3 = 1'-0"
APPLICABLE TO ALL DECK-TO-WALL AND WALL-TO-WALL TRANSITIONS.

The General Contractor shall check & verify all dimensions and report any errors or omissions to the designers.

No.	Date	Issue/Revision	By
0	2019-08-07	ISSUED FOR TENDER	DJM

NOTE:
PRELIMINARY
DRAWING
DO NOT USE FOR
CONSTRUCTION



300-275 Carlton Street
Winnipeg, Manitoba R3C 5R6
T 204- 943. 7501
F 204- 943. 7507



Crosier Kilgour
& Partners Ltd.
CONSULTING STRUCTURAL ENGINEERS

Project
BONIVITAL POOL
POOL DECK AND TANKS RESTORATION
TENDER NO. : 286-2019
1215 ARCHIBALD STREET
WINNIPEG, MANITOBA

Sheet Title
TYPICAL WATERPROOFING
DETAILS

File 2018-1471 Date 2019-08-07

Design DJM Drawn MAH

Revision Sheet No.

0 S4.2