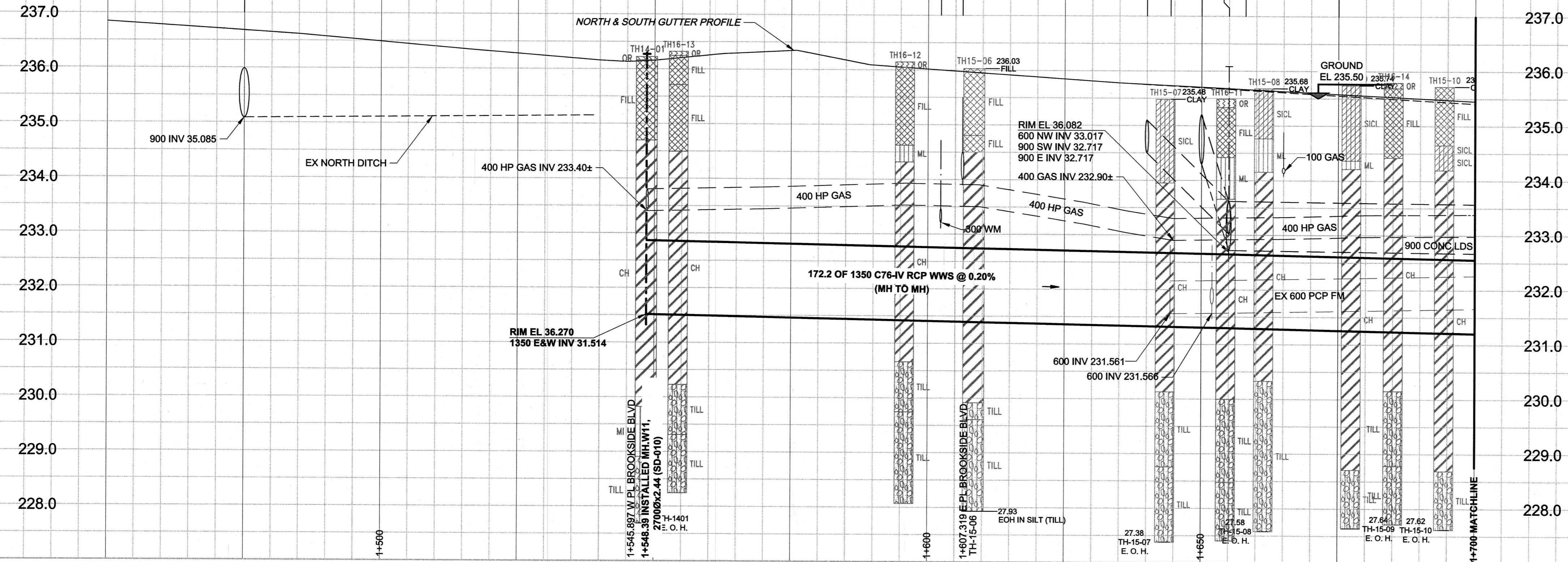


D SIZE 22" x 34" (559mm x 864mm)

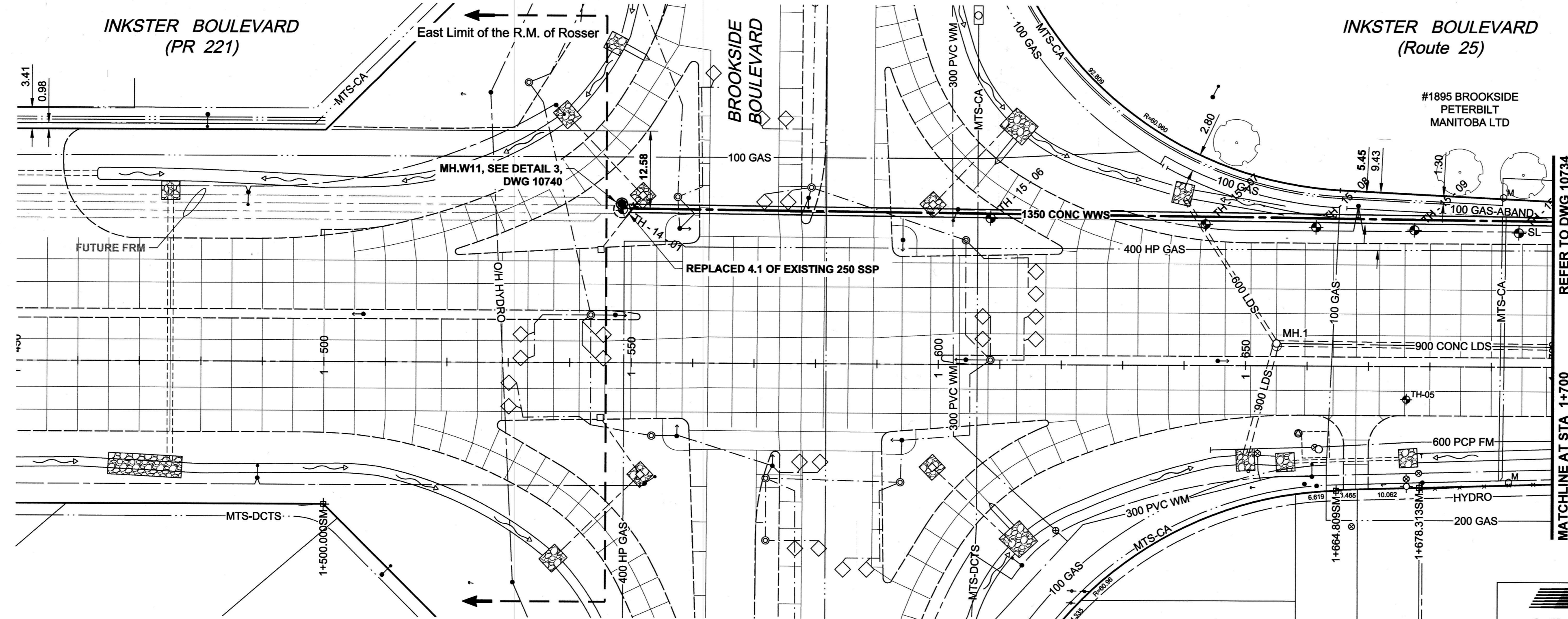
PLOT: 11/14/2018 1:57:04 PM

AECOM REVIEW DRAFT CHK
AECOM FILE NAME: 60223051_01-C-1001_RX.dwg Saved By: cooperkl

EXISTING FEATURES



CHAINAGE ALONG S MEDIAN



ITEM	MANUFACTURER	MATERIAL SPECIFICATION	SPECIAL FEATURES
250 PVC PIPE	IPEX INC.	ASTM D3034 CSA B182.2	SDR-35 "RING-TITE"
1350 CONCRETE PIPE	LAFARGE CONSTRUCTION MATERIALS INC.	ASTM C76M CSA A257.2 (CLASSES AS NOTED)	STEEL REINFORCED
1350 PIPE GASKETS (LAFARGE)	HAMILTON KENT OF CANADA LIMITED	ASTM C361 ASTM C443 CSA A257.3	TYLOX "SUPERSEAL" SELF-LUBRICATING GASKET
250 MOULDED PVC FITTINGS (COUPLING)	IPEX INC.	ASTM D3034 ASTM F1336	SDR-35 "RING-TITE"
MANHOLE & CATCHBASIN ADJUSTING RINGS	LAFARGE CONSTRUCTION MATERIALS INC.	ASTM B182.2 ASTM C478	TEES, WYES & BENDS ONLY
MANHOLE/CATCHBASIN JOINT GASKETS	HENRY COMPANY (LAFARGE CONST. MATERIALS LTD.)	ASTM C990	CONCRETE ADJUSTING RINGS
MANHOLE FRAMES & COVERS	TITAN FOUNDRY	C.I. - ASTM A-48 CLASS 30B CONFORMS TO AP-004 & AP-005 OR AP-006	BUTYL RUBBER SEALANT FLEXIBLE ROPE TF-101-9, -6, OR -3 MH FRAME AND TF-101-9 SOLID OR GRATED COVER
CONCRETE	LAFARGE CANADA INC.		
CONTRACT INFORMATION			
CONTRACTOR: NELSON RIVER CONSTRUCTION			
CONSTRUCTION PERIOD: MARCH - MAY 2017			
FIELD BOOK NO.: 16-28			

REFER TO DWG 10734
MATCHLINE AT STA 1+700

METRIC
WHOLE NUMBERS INDICATE MILLIMETRES
DECIMALIZED NUMBERS INDICATE METRES

APEGN
Certificate of Authorization
AECOM Canada Ltd.
No. 4671 Date: Nov 19, 2018

CONSTRUCTION COMPLETION DATE:
JUNE 2017

RECORD DRAWING

BID OPPORTUNITY NO. 481-2014

EXISTING	LEGEND - PLAN	NEW	EXISTING	LEGEND - PLAN	NEW	EXISTING	LEGEND - PROFILE	NEW
150 WM	WATERMAIN	150 WM	CURB STOP	150 WM	WATERMAIN	150 WM	WATERMAIN	150 WM
HYDRANT	REDUCER	HYDRANT	REDUCER	HYDRANT	REDUCER	HYDRANT	REDUCER	HYDRANT
VALVE	COUPLING	VALVE	COUPLING	VALVE	COUPLING	VALVE	COUPLING	VALVE
300 LDS	LAND DRAINAGE SEWER	300 LDS	ANODE	300 LDS	LAND DRAINAGE SEWER	300 LDS	LAND DRAINAGE SEWER	300 LDS
250 WWS	WASTE WATER SEWER	250 WWS	HYDRO	250 WWS	WASTE WATER SEWER	250 WWS	WASTE WATER SEWER	250 WWS
MANHOLE	MTS	MANHOLE	MTS	MANHOLE	MTS	MANHOLE	MTS	MANHOLE
CATCH BASIN	GAS	CATCH BASIN	GAS	CATCH BASIN	GAS	CATCH BASIN	GAS	CATCH BASIN
CURB INLET	TESTHOLE	CURB INLET	TESTHOLE	CURB INLET	TESTHOLE	CURB INLET	TESTHOLE	CURB INLET
CULVERT	LAMP STANDARD	CULVERT	LAMP STANDARD	CULVERT	LAMP STANDARD	CULVERT	LAMP STANDARD	CULVERT
PIPE ABANDONMENTS	TREE	PIPE ABANDONMENTS	TREE	PIPE ABANDONMENTS	TREE	PIPE ABANDONMENTS	TREE	PIPE ABANDONMENTS
SURVEY BAR		SURVEY BAR		SURVEY BAR		SURVEY BAR		SURVEY BAR

LOCATION APPROVED
UNDERGROUND STRUCTURES

DATE: _____

NOTE:
LOCATION OF UNDERGROUND STRUCTURES AS SHOWN ARE BASED ON THE BEST INFORMATION AVAILABLE. BUT NO GUARANTEE IS GIVEN THAT ALL EXISTING UTILITIES ARE SHOWN OR THAT THE GIVEN LOCATIONS ARE EXACT. CONFIRMATION OF EXISTENCE AND EXACT LOCATION OF ALL SERVICES MUST BE OBTAINED FROM THE INDIVIDUAL UTILITIES BEFORE PROCEEDING WITH CONSTRUCTION.

NO.	REVISIONS	DATE	BY
4	ISSUED FOR RECORD	17/01/18	ES
3	ADDED RECORD INFO FOR MH.W11	17/10/18	WJd
2	REVISED MH.W9 & MH.W10 LOCATIONS	18/11/17	WJd
1	ADDITIONAL TESTHOLE INFO ADDED	16/01/14	WJd
0	ISSUED FOR TENDER	14/06/25	WJd

DESIGNED BY	FMI	CHECKED BY	DATE
DRAWN BY	KMB	APPROVED BY	June 25/14
HOR. SCALE	1:500	RELEASED FOR CONSTRUCTION	
VERT. SCALE	1:50		

PROFESSIONAL'S SEAL
PROVINCE OF MANITOBA
REGISTERED PROFESSIONAL ENGINEER
Nov 19, 2018
A. NAGY

THE CITY OF WINNIPEG
WATER AND WASTE DEPARTMENT

NORTH-WEST INTERCEPTOR SEWER

INKSTER BOULEVARD
446m E OF ROY ROCHE DRIVE
TO 306m W OF INKSBROOK DRIVE

SHEET 2 OF 9
CITY DRAWING NUMBER
10733
REV 4