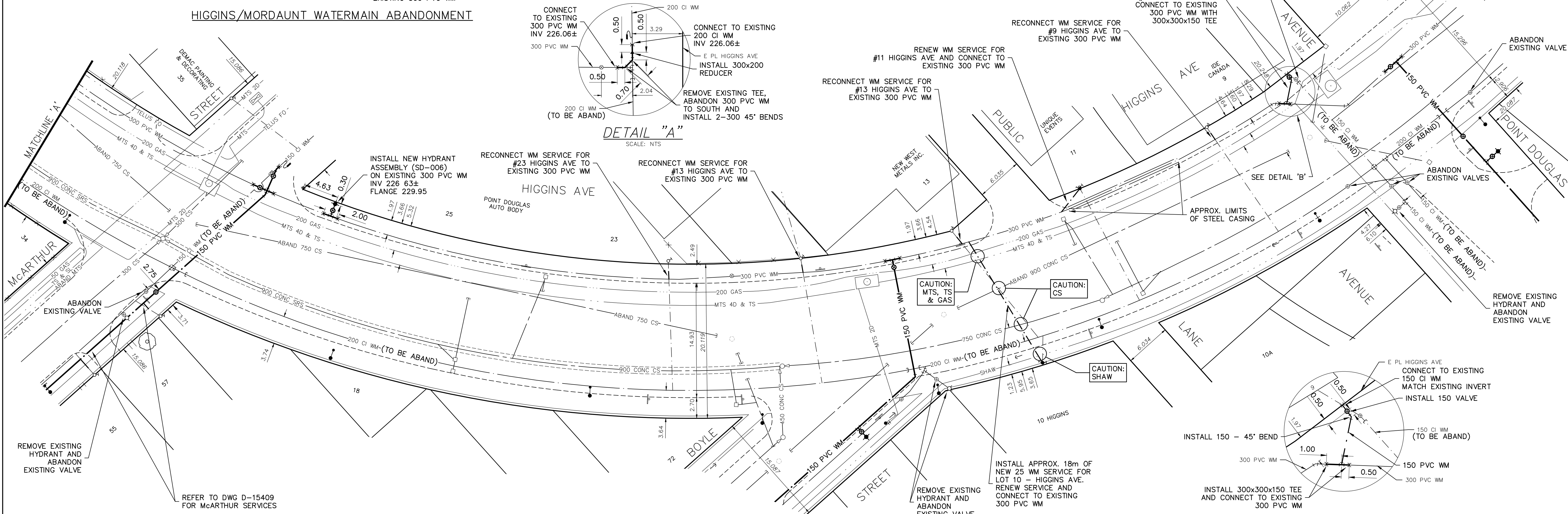


**WATER SERVICE INFORMATION**

ADDRESS	SIZE (mm)	SIZE (mm) MATERIAL (STREET)	SHORT & LONG MEASUREMENT	CORP. LOCATION	REMARKS
9 HIGGINS AV			19.2 m S SL OF PT DOUGLAS		RECONNECT
9 HIGGINS AV	150 mm	CI	5.8 m S SL OF PT DOUGLAS		RECONNECT
11 HIGGINS AV	20 mm	CU	2.9 m N S BL	4.3 m N OF SC	RENEW
11 HIGGINS AV	20 mm	CU	30.2 m S SL OF PT DOUGLAS		ABANDON
13 HIGGINS AV	20 mm	CU	OPP SL OF STORE	14.1 m N NL BOYLE	NOT IN SERVICE
13 HIGGINS AV	20 mm	CU	4.9 m N S BL	1.4 m N OF SC	RECONNECT
13 HIGGINS AV	20 mm	CU	50.1 m S S CURB POINT DOUGLAS		RECONNECT
23 HIGGINS AV	20 mm	CU	26.9 m S SL LANE		RECONNECT
25 HIGGINS AV	20 mm	CU	3.2 m S S BL	3.7 m N OF SC	RECONNECT
25 HIGGINS AV	20 mm	CU	31.1 m S HYD		RECONNECT
25 HIGGINS AV	20 mm	CU	5 m N S BL		OPP CS
25 HIGGINS AV	20 mm	CU	18.3 m N NL HIGGINS		SERVICED OFF MCARTHUR
35 HIGGINS AV	25 mm	CU	7 m N S BL	1.8 m N OF SC	SERVICED OFF MCARTHUR
34 HIGGINS AV	20 mm	CU	7.3 m N NL HIGGINS		RENEW AS 25MM
34 HIGGINS AV	25 mm	CU	4.7 m W E BL	0.8 m E OF SC	RENEW AS 25MM
37 HIGGINS AV	20 mm	CU	8.7 m W E BL		RECONNECT
41 HIGGINS AV	25 mm	CU	21.5 m S EL MORDAUNT		OPP CS
41 HIGGINS AV	25 mm	CU	5.2 m W E BL		W SC
41 HIGGINS AV	25 mm	CU	10.6 m W WL MORDAUNT		N.I.C. TAPPED OPP SIDE MAIN

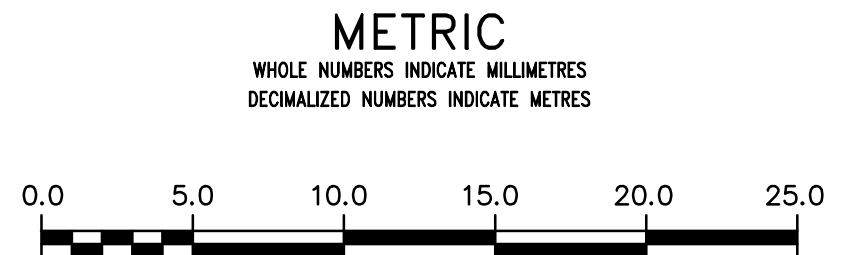
\* SERVICES TO BE RENEWED TO R. ALL OTHERS TO BE RECONNECTED

NOTE: LOCATION OF WATER SERVICES SHOWN ON DRAWINGS ARE APPROXIMATE. THE CONTRACTOR SHALL FIELD LOCATE ALL WATER SERVICES PRIOR TO CONSTRUCTION.



**HIGGINS AVE - WM SERVICES RENEWALS & RECONNECTIONS**  
NOTE: NO PROFILE SHOWN FOR HIGGINS WATER MAIN

ALL VALVES TO BE COUNTER-CLOCKWISE TO CLOSE (RED OPERATING NUT)



**ENGINEERS**  
**GEOSCIENTISTS**  
**MANITOBA**

Certificate of Authorization  
AECOM Canada Ltd.  
No. 4671 Date: 3/29/2019

REFER TO DRAWING D-15408 FOR CONSTRUCTION NOTES

**WARNING**

IF POWER EQUIPMENT OR EXPLOSIVES ARE TO BE USED FOR EXCAVATION ON THIS PROJECT THE CONTRACTOR MUST:

- 1) NOTIFY THE GAS COMPANY OF THE PROPOSED LOCATION OF EXCAVATION.
- 2) TAKE PRECAUTION TO AVOID DAMAGE TO GAS COMPANY INSTALLATIONS.

SEE PROVINCIAL REGULATION 210/72 FOR DETAILS

**LOCATION APPROVED**  
UNDERGROUND STRUCTURES

SUPV. U/G STRUCTURES COMMITTEE DATE

NOTE:  
LOCATION OF UNDERGROUND STRUCTURES AS SHOWN ARE BASED ON THE BEST INFORMATION AVAILABLE BUT NO GUARANTEE IS GIVEN THAT ALL EXISTING UTILITIES ARE SHOWN OR THAT THE GIVEN LOCATIONS ARE EXACT. CONFIRMATION OF EXISTENCE AND EXACT LOCATION OF ALL SERVICES MUST BE OBTAINED FROM THE INDIVIDUAL UTILITIES BEFORE PROCEEDING WITH CONSTRUCTION.

B.M.	35-017	N.W. Cor. Higgins Ave. & Gomez St., Tbt. in S. Conc.
ELEV.	230.730m	Foundation No. 109 Higgins Ave., 1.3 m W. & 1 m below brick of S.E. Cor. of Bldg.
NO.		REVISIONS
0	ISSUED FOR TENDER	19/03/29 GSK
A	ISSUED FOR REVIEW	19/03/15 GSK
DATE	2019/03/15	DATE

**AECOM**

DESIGNED BY JP CHECKED BY GSK

DRAWN BY JP APPROVED BY

SCALE: HORIZONTAL 1:250 VERTICAL 1:50

RELEASED FOR CONSTRUCTION

DATE 2019/03/15

ENGINEER'S SEAL

PROVINCE OF MANITOBA  
REGISTERED PROFESSIONAL ENGINEER  
K.W. FITCHETT  
M.Sc. Eng.

CONSULTANT DRAWING NUMBER  
C-0007

**THE CITY OF WINNIPEG**  
WATER AND WASTE DEPARTMENT  
ENGINEERING DIVISION

2019 WATER MAIN RENEWALS  
CONTRACT 7

HIGGINS AVENUE  
MORDAUNT STREET TO  
SUTHERLAND AVENUE

SHEET 9 OF 19  
CITY DRAWING NUMBER  
D-15415