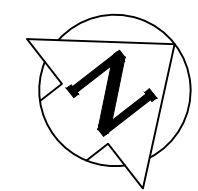


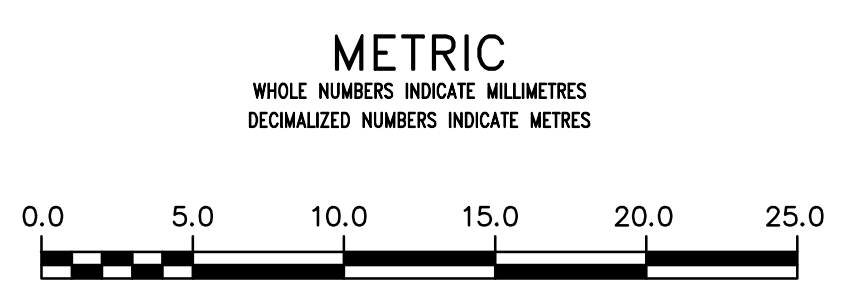
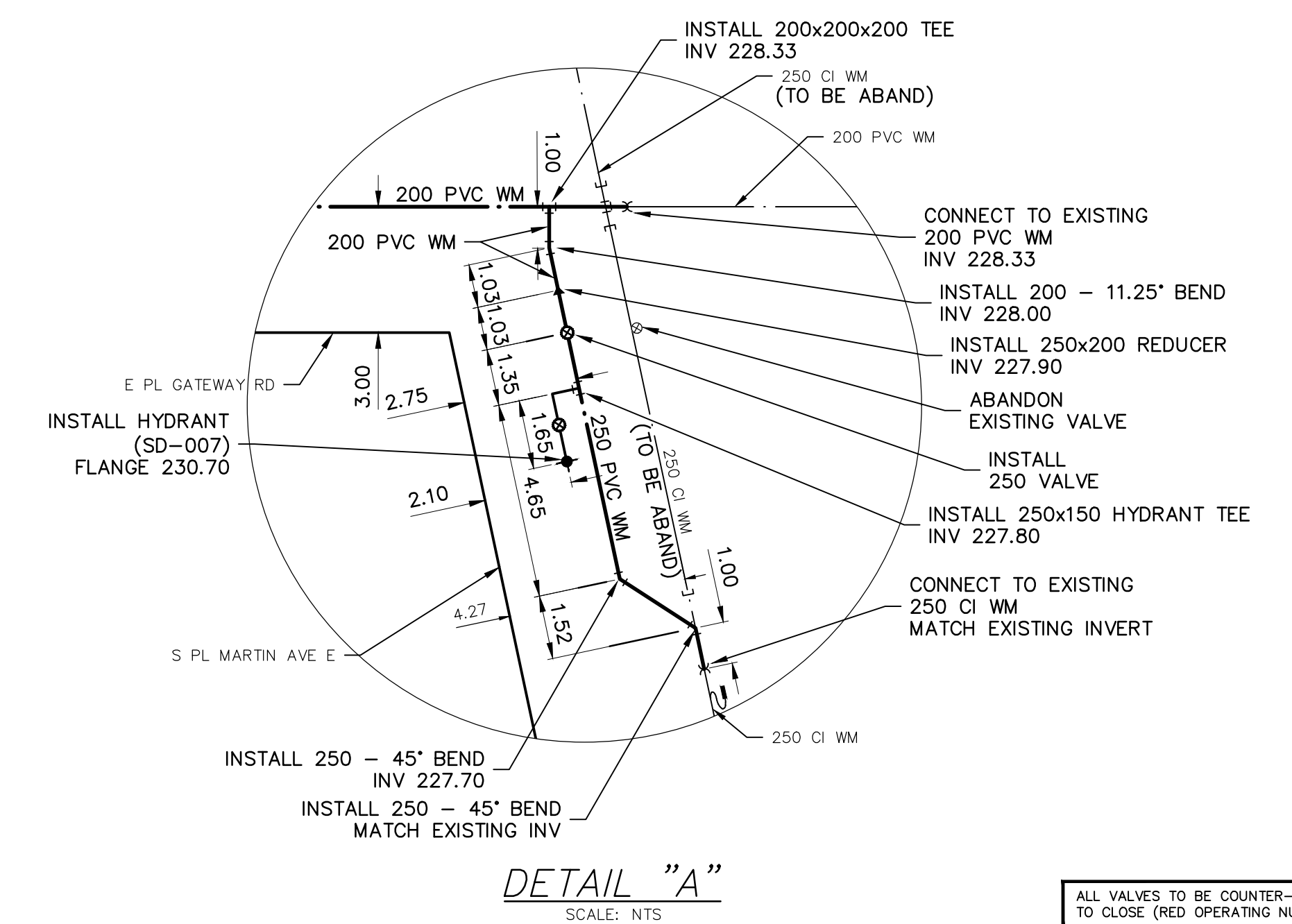
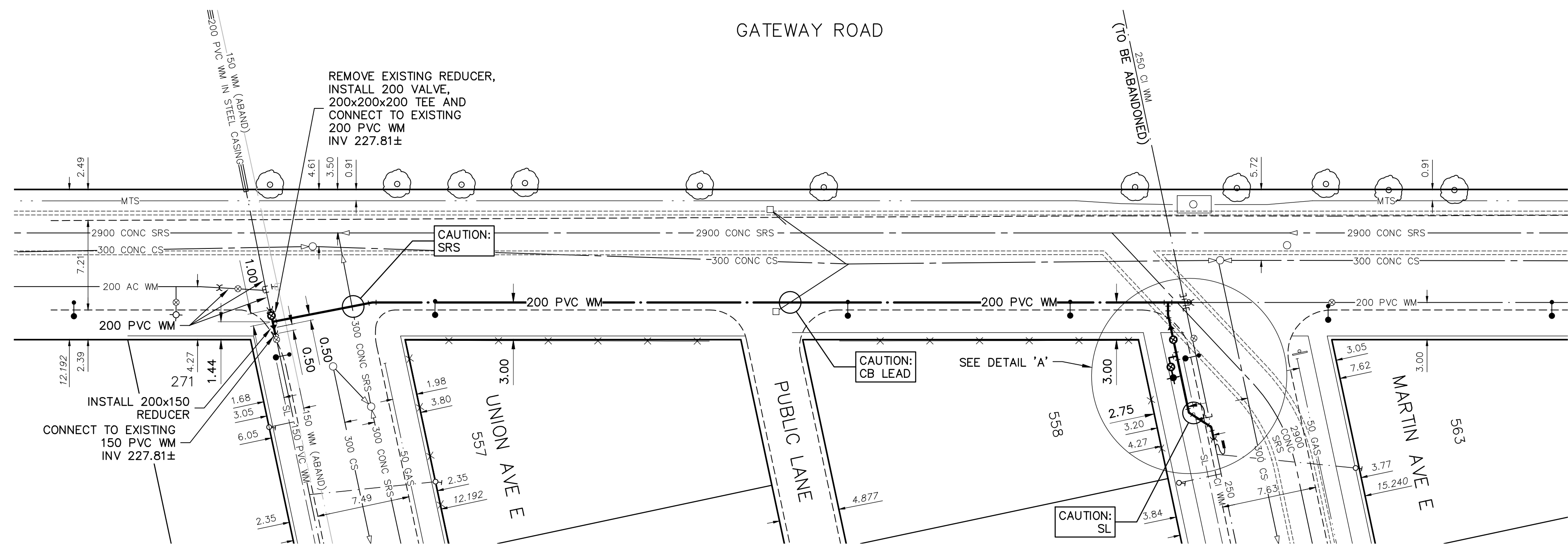
NOTE: CHAINAGES SHOWN ARE ALONG E. R. OF MARTIN AVE



WATER SERVICE INFORMATION					
ADDRESS	SIZE (mm) MATERIAL (STREET)	SIZE (mm) MATERIAL (PROP.)	SHORT & LONG MEASUREMENT	CORP. LOCATION	REMARKS
558 MARTIN AV E	12 mm CU	12 mm CU	3 m E EL	W SC	N.I.C.
557 UNION AV E	20 mm CU	12 mm CU	12.2 m E EL GATEWAY 11.7 m E EL GATEWAY	E OF SC	N.I.C.
561 UNION AV E	20 mm CU	20 mm CU	0.7 m W W BL 19.7 m E EL GATEWAY	OPP CS	N.I.C.
271 GATEWAY RD	20 mm CU	12 mm LEAD	7.2 m E EL GATEWAY		SERVICED OFF UNION

* SERVICES TO BE RENEWED TO R. ALL OTHERS TO BE RECONNECTED

NOTE: LOCATION OF WATER SERVICES SHOWN ON DRAWINGS ARE APPROXIMATE. THE CONTRACTOR SHALL FIELD LOCATE ALL WATER SERVICES PRIOR TO CONSTRUCTION.



ENGINEERS
GEO-SCIENTISTS
MANITOBA
Certificate of Authorization
AECOM Canada Ltd.
No. 4671 Date: 3/29/2019

REFER TO DRAWING D-15408 FOR CONSTRUCTION NOTES

WARNING
IF POWER EQUIPMENT OR EXPLOSIVES ARE TO BE USED FOR EXCAVATION ON THIS PROJECT THE CONTRACTOR MUST:
1) NOTIFY THE GAS COMPANY OF THE PROPOSED LOCATION OF EXCAVATION.
2) TAKE PRECAUTION TO AVOID DAMAGE TO GAS COMPANY INSTALLATIONS.
SEE PROVINCIAL REGULATION 210/72 FOR DETAILS

LOCATION APPROVED
UNDERGROUND STRUCTURES
SUPV. U/G STRUCTURES COMMITTEE DATE
NOTE:
LOCATION OF UNDERGROUND STRUCTURES AS SHOWN ARE BASED ON THE BEST INFORMATION AVAILABLE BUT NO GUARANTEE IS GIVEN THAT ALL EXISTING UTILITIES ARE SHOWN OR THAT THE GIVEN LOCATIONS ARE EXACT. CONFIRMATION OF EXISTENCE AND EXACT LOCATION OF ALL SERVICES MUST BE OBTAINED FROM THE INDIVIDUAL UTILITIES BEFORE PROCEEDING WITH CONSTRUCTION.

B.M. 27-030 ELEV. 230.897m	85R637 - S.W. Cor. Roch St. and Harrison Ave., Tbt. on top of 0.05m dia. x 2-m iron pipe, 2.1m E. of W.L. of Roch St. & on S.L. of Harrison Ave.	
DESIGNED BY	JP	
CHECKED BY	GSK	
DRAWN BY	JP	
APPROVED BY		
RELEASED FOR CONSTRUCTION		
SCALE: HORIZONTAL 1:250 VERTICAL 1:50		
DATE 2019/03/15		
REVISIONS		
NO.	DATE	BY
0	ISSUED FOR TENDER	19/03/29 GSK
A	ISSUED FOR REVIEW	19/03/15 GSK

AECOM

ENGINEER'S SEAL
PROVINCE OF MANITOBA
REGISTERED PROFESSIONAL ENGINEER
K.W. FITCHETT
Mentor

CONSULTANT DRAWING NUMBER
C-0016

THE CITY OF WINNIPEG
WATER AND WASTE DEPARTMENT
ENGINEERING DIVISION

2019 WATER MAIN RENEWALS
CONTRACT 7

GATEWAY ROAD
UNION AVENUE E TO
MARTIN AVENUE E

SHEET 18 OF 19
CITY DRAWING NUMBER
D-15424