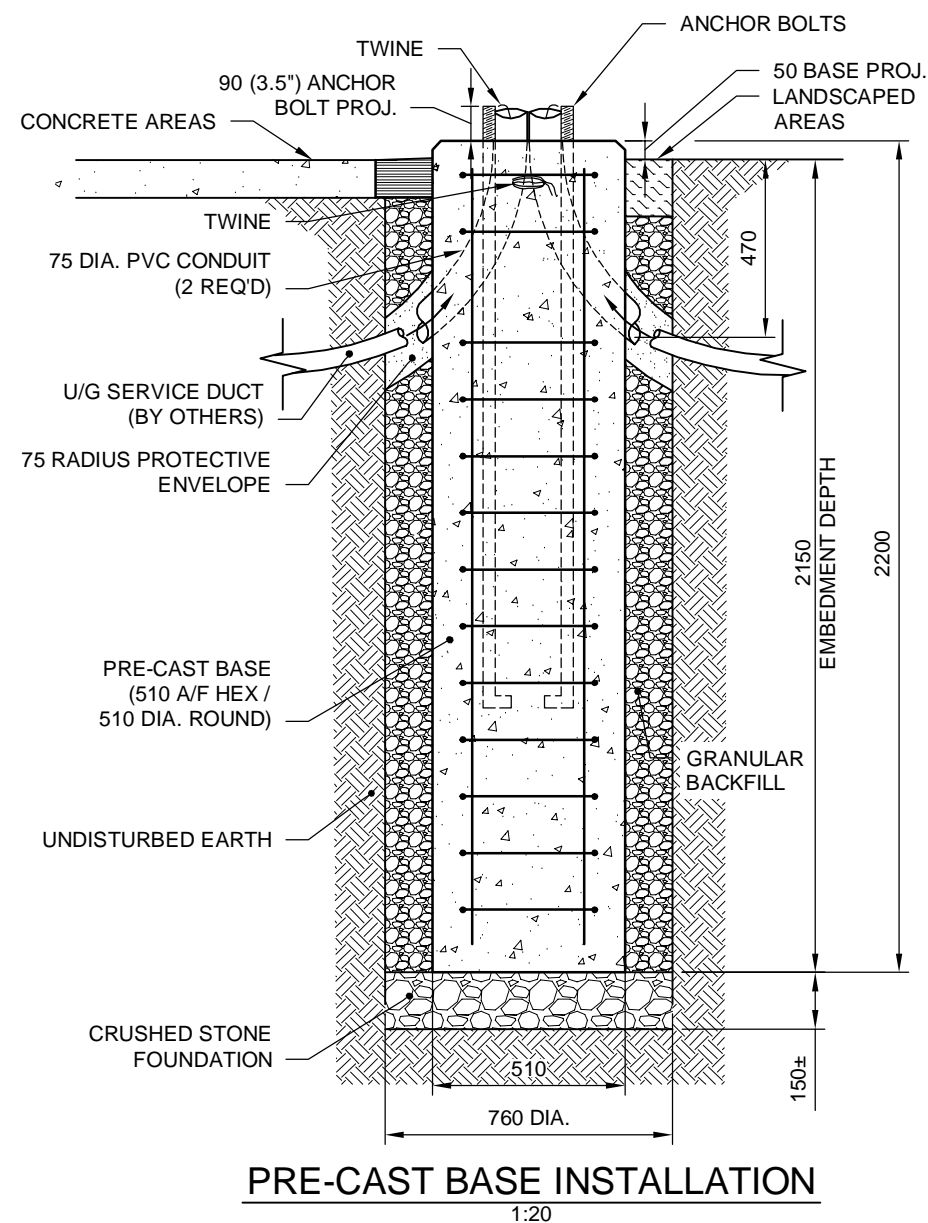
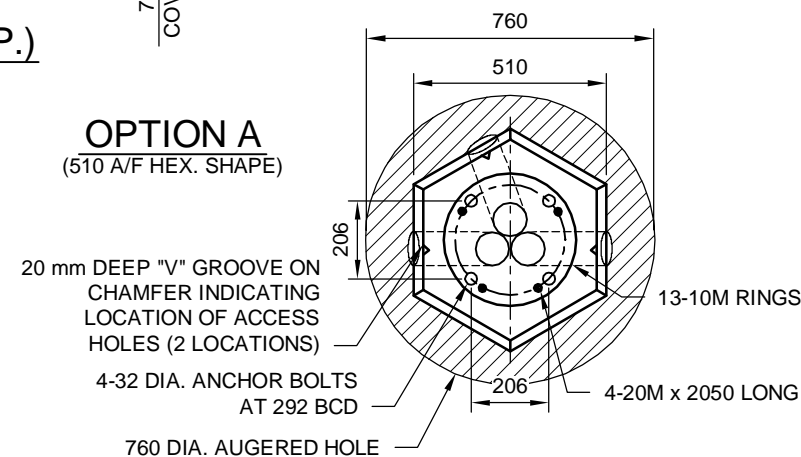


SECTION (TYP.)
1:20

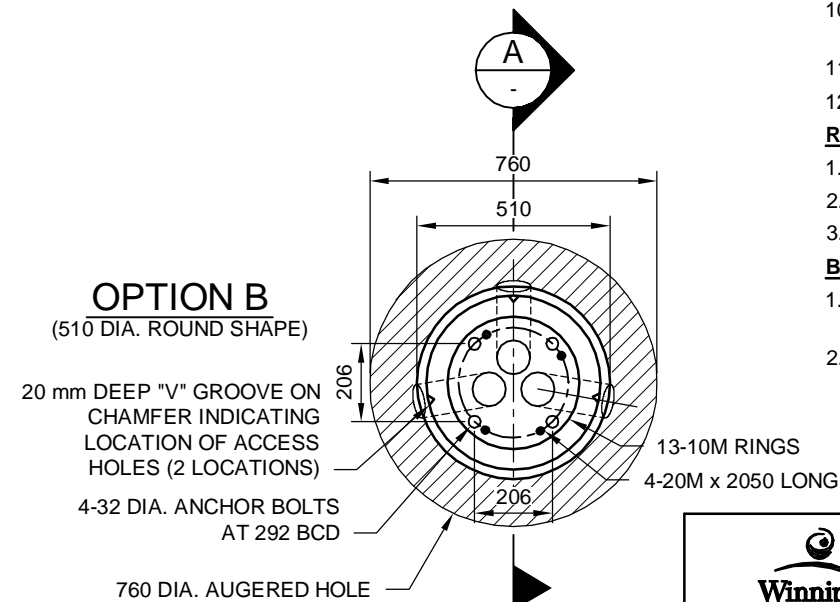


PRE-CAST BASE INSTALLATION
1:20

OPTION A
(510 A/F HEX. SHAPE)



OPTION B
(510 DIA. ROUND SHAPE)



PLAN
1:20

NOTES:

ANCHOR BOLTS

- 4-32 mm DIA. ANCHOR BOLTS 1600 LONG C/W 75 mm HOOK
- CAN/CSA G40.21-GR.300W
- TOP 125 mm THREADED UNC CLASS 2A
- HOT DIP GALVANIZED FULL LENGTH TO ASTM A153 CLASS C
- BCD = BOLT CIRCLE DIAMETER TO CENTER OF BOLT GROUP
- BOLTS SHALL BE HELD IN PLACE ACCURATELY WITH A STEEL TEMPLATE.
- THREADED PORTION OF ANCHOR BOLTS SHALL BE PROTECTED FROM FOULING PRIOR TO CONCRETE POUR.

PRE-CAST CONCRETE BASE

- CAN/CSA SPECIFICATION: CAN3-A23.4-09
- CEMENT: TYPE HS SULPHATE RESISTANT, S2 EXPOSURE
- CONCRETE STRENGTH: 35 MPa AT 28 DAYS
- MAXIMUM AGGREGATE: 20 mm, AIR CONTENT 3-6%
- 25 mm CHAMFER ON ALL EXPOSED CONCRETE EDGES.
- PVC CONDUITS: 75 (3") DIA. LONG RADIUS (24") SWEEP ELBOW (90°)
- CONDUITS SHALL BE PLACED TO FIT IN HEX. SHAPE BASE SO THAT THEY EXIT THROUGH A FLAT SURFACE.
- CONDUITS SHALL BE HELD SECURELY IN CENTER OF BASE PRIOR TO CONCRETE POUR.
- CUT CONDUITS FLUSH AT TOP AND SIDES OF CONCRETE BASE AFTER CURING.
- INDENT THE NUMBER "SD-XXX" ON THE TOP OF THE BASE.
- LIFTING HOOKS: 8 mm 7 x 19 STAINLESS STEEL CABLE
- WEIGHT OF PRE-CAST BASE: 1080 kg

REINFORCING STEEL

- CAN/CSA G30.18-GR.400W
- ALL BARS TO BE HOT DIP GALVANIZED.
- CLEAR COVER 75 mm

BACKFILL MATERIAL

- CRUSHED STONE FOUNDATION: TYPE 3 AS PER CW 2030-R7 2.1.2 AND 2.1.5.
- BACKFILL: GRANULAR BACKFILL TYPE 2 AS PER CW 2030-R7 2.1.2 TO 2.1.5.

INSTALLATION

- MARK THE CENTER AND OFFSET LOCATIONS BEFORE EXCAVATING.
- SOFT DIG/AUGER DRILL EXCAVATION.
- EXCAVATION DEPTH EQUALS THE EMBEDMENT DEPTH PLUS 150 mm ± FOR CRUSHED STONE FOUNDATION.
- AUGER HOLE 760 DIA.
- PLACE, LEVEL, AND COMPACT CRUSHED STONE FOUNDATION TO EDGE OF EXCAVATION.
- VERIFY ORIENTATION OF PRE-CAST BASE ANCHOR BOLTS AND CONDUIT HOLES TO SITE LAYOUT DRAWINGS.
- SET BASE UNIT WHILE IN A PLUMB ORIENTATION INTO FINAL LOCATION (DO NOT TILT UP).
- SET UNIT TO PROPER ELEVATION, ±10 mm.
- BRACE BASE AS REQUIRED TO MAINTAIN UNIT IS LEVEL, TRUE, AND PLUMB UNTIL BACKFILL HAS BEEN PLACED AND CONSOLIDATED.
- PLACE AND COMPACT GRANULAR BACKFILL UNIFORMLY AROUND PERIMETER OF THE BASE IN 150 mm LIFTS.
- PAUSE BACKFILLING AT BOTTOM OF CONDUIT TRENCH, THEN INSTALL BELOW GRADE ELECTRICAL CONNECTIONS.
- FINISH BACKFILLING AND COMPACTING IN 150 mm LIFTS TO THE ROUGH GRADE OR AS DIRECTED BY THE CONTRACT ADMINISTRATOR.
- REMOVE SOILS OR STAINS FROM THE EXPOSED CONCRETE.

06/11/2018

Sheet 4/5

DIMENSIONS ARE IN MILLIMETRES (UNLESS OTHERWISE NOTED)

THE CITY OF WINNIPEG
PUBLIC WORKS DEPARTMENT

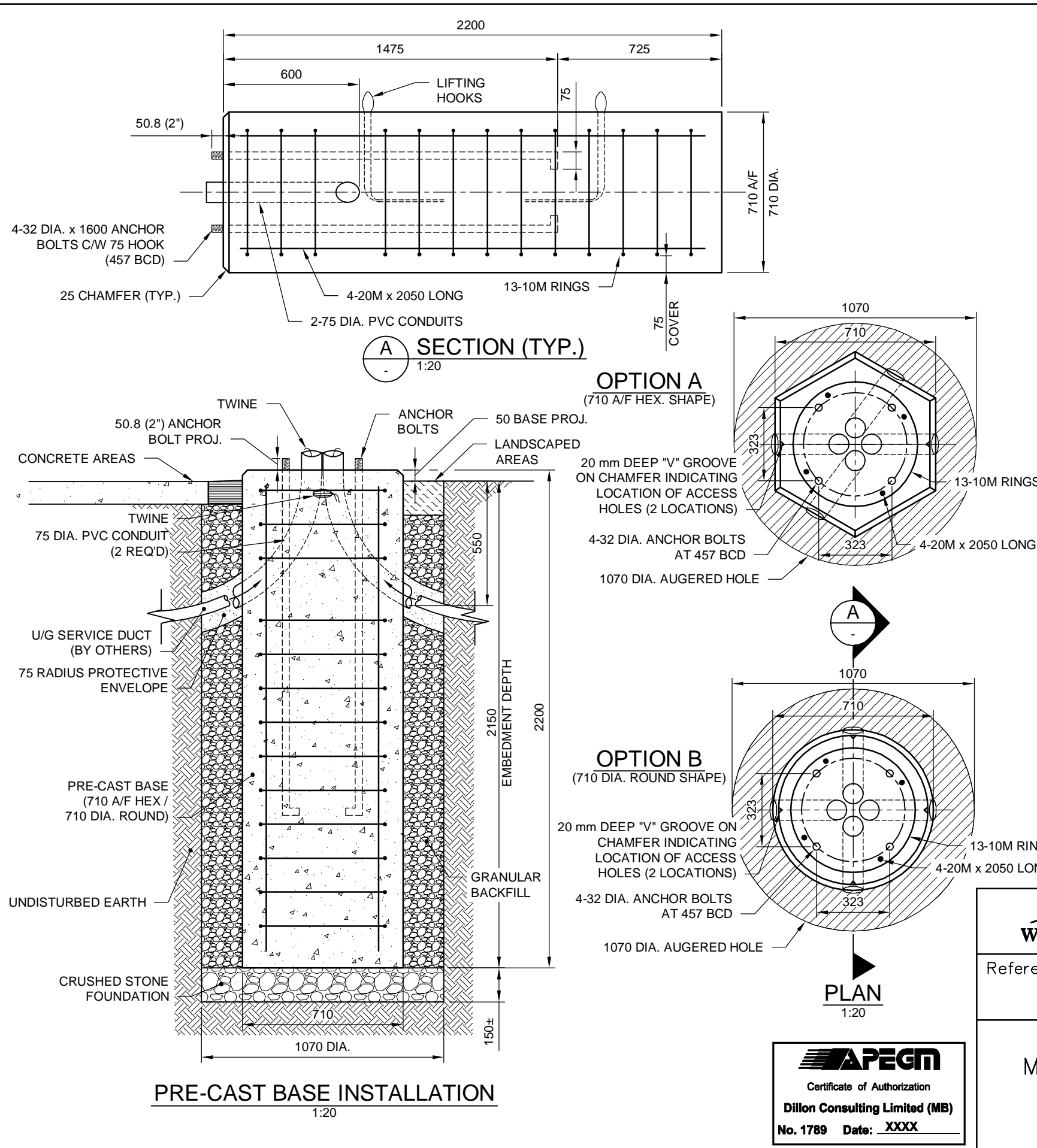
Reference Spec. No.
CW XXXX

LIGHT DUTY PRE-CAST BASE
TYPE PG

Revisions			
No.	Date	Description	By
1	XX/XX/18	XXX	SSR

Designed By: KNL	Drawn By: KNL	Scale: AS SHOWN
Checked By: SSR	Date: XX/XX/18	Drawing No. SD-XXX
Approved:		

APEGM
Certificate of Authorization
Dillon Consulting Limited (MB)
No. 1789 Date: XXXX



NOTES:

ANCHOR BOLTS

- 4-32 mm DIA. ANCHOR BOLTS 1600 LONG C/W 75 mm HOOK
- CAN/CSA G40.21-GR.300W
- TOP 125 mm THREADED UNC CLASS 2A
- HOT DIP GALVANIZED FULL LENGTH TO ASTM A153 CLASS C
- BCD = BOLT CIRCLE DIAMETER TO CENTER OF BOLT GROUP
- BOLTS SHALL BE HELD IN PLACE ACCURATELY WITH A STEEL TEMPLATE.
- THREADED PORTION OF ANCHOR BOLTS SHALL BE PROTECTED FROM FOULING PRIOR TO CONCRETE POUR.

PRE-CAST CONCRETE BASE

- CAN/CSA SPECIFICATION: CAN3-A23.4-09
- CEMENT: TYPE HS SULPHATE RESISTANT, S2 EXPOSURE
- CONCRETE STRENGTH: 35 MPa AT 28 DAYS
- MAXIMUM AGGREGATE: 20 mm, AIR CONTENT 3-6%
- 25 mm CHAMFER ON ALL EXPOSED CONCRETE EDGES.
- PVC CONDUITS: 75 (3") DIA. LONG RADIUS (24") SWEEP ELBOW (90°)
- CONDUITS SHALL BE PLACED TO FIT IN HEX. SHAPE BASE SO THAT THEY EXIT THROUGH A FLAT SURFACE
- CONDUITS SHALL BE HELD SECURELY IN CENTER OF BASE PRIOR TO CONCRETE POUR.
- CUT CONDUITS FLUSH AT TOP AND SIDES OF CONCRETE BASE AFTER CURING.
- INDENT THE NUMBER "SD-XXX" ON THE TOP OF THE BASE.
- LIFTING HOOKS: 10 mm 7 x 19 STAINLESS STEEL CABLE
- WEIGHT OF PRE-CAST BASE: 2090 kg

REINFORCING STEEL

- CAN/CSA G30.18-GR.400W
- ALL BARS TO BE HOT DIP GALVANIZED.
- CLEAR COVER 75 mm

BACKFILL MATERIAL

- CRUSHED STONE FOUNDATION: TYPE 3 AS PER CW 2030-R7 2.1.2 AND 2.1.5.
- BACKFILL: GRANULAR BACKFILL TYPE 2 AS PER CW 2030-R7 2.1.2 TO 2.1.5.

INSTALLATION

- MARK THE CENTER AND OFFSET LOCATIONS BEFORE EXCAVATING.
- SOFT DIG/AUGER DRILL EXCAVATION.
- EXCAVATION DEPTH EQUALS THE EMBEDMENT DEPTH PLUS 150 mm ± FOR CRUSHED STONE FOUNDATION.
- AUGER HOLE 1070 DIA.
- PLACE, LEVEL, AND COMPACT CRUSHED STONE FOUNDATION TO EDGE OF EXCAVATION.
- VERIFY ORIENTATION OF PRE-CAST BASE ANCHOR BOLTS AND CONDUIT HOLES TO SITE LAYOUT DRAWINGS.
- SET BASE UNIT WHILE IN A PLUMB ORIENTATION INTO FINAL LOCATION (DO NOT TILT UP).
- SET UNIT TO PROPER ELEVATION, ±10 mm.
- BRACE BASE AS REQUIRED TO MAINTAIN UNIT IS LEVEL, TRUE, AND PLUMB UNTIL BACKFILL HAS BEEN PLACED AND CONSOLIDATED.
- PLACE AND COMPACT GRANULAR BACKFILL UNIFORMLY AROUND PERIMETER OF THE BASE IN 150 mm LIFTS.
- PAUSE BACKFILLING AT BOTTOM OF CONDUIT TRENCH, THEN INSTALL BELOW GRADE ELECTRICAL CONNECTIONS.
- FINISH BACKFILLING AND COMPACTING IN 150 mm LIFTS TO THE ROUGH GRADE OR AS DIRECTED BY THE CONTRACT ADMINISTRATOR.
- REMOVE SOILS OR STAINS FROM THE EXPOSED CONCRETE.

06/11/2018

Sheet 5/5

DIMENSIONS ARE IN MILLIMETRES (UNLESS OTHERWISE NOTED)

<p>THE CITY OF WINNIPEG PUBLIC WORKS DEPARTMENT</p>		Revisions							
		<table border="1"> <tr> <td>1</td> <td>xx/xx/18</td> <td>xxx</td> <td>SSR</td> </tr> <tr> <td>No.</td> <td>Date</td> <td>Description</td> <td>By</td> </tr> </table>		1	xx/xx/18	xxx	SSR	No.	Date
1	xx/xx/18	xxx	SSR						
No.	Date	Description	By						
Reference Spec. No. CW XXXX		Designed By: KNL	Drawn By: KNL	Scale : AS SHOWN					
MEDIUM DUTY PRE-CAST BASE TYPE PD		Checked By: SSR	Date: XX/XX/18	Drawing No. SD-XXX					
		Approved:							

