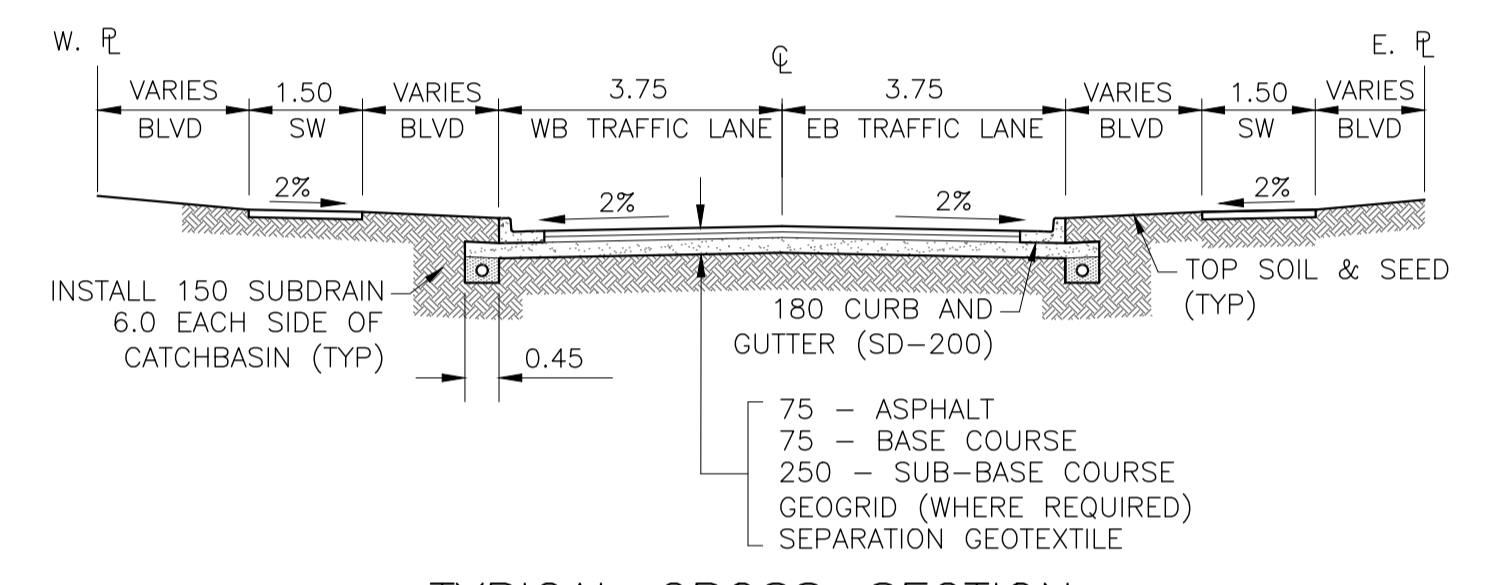


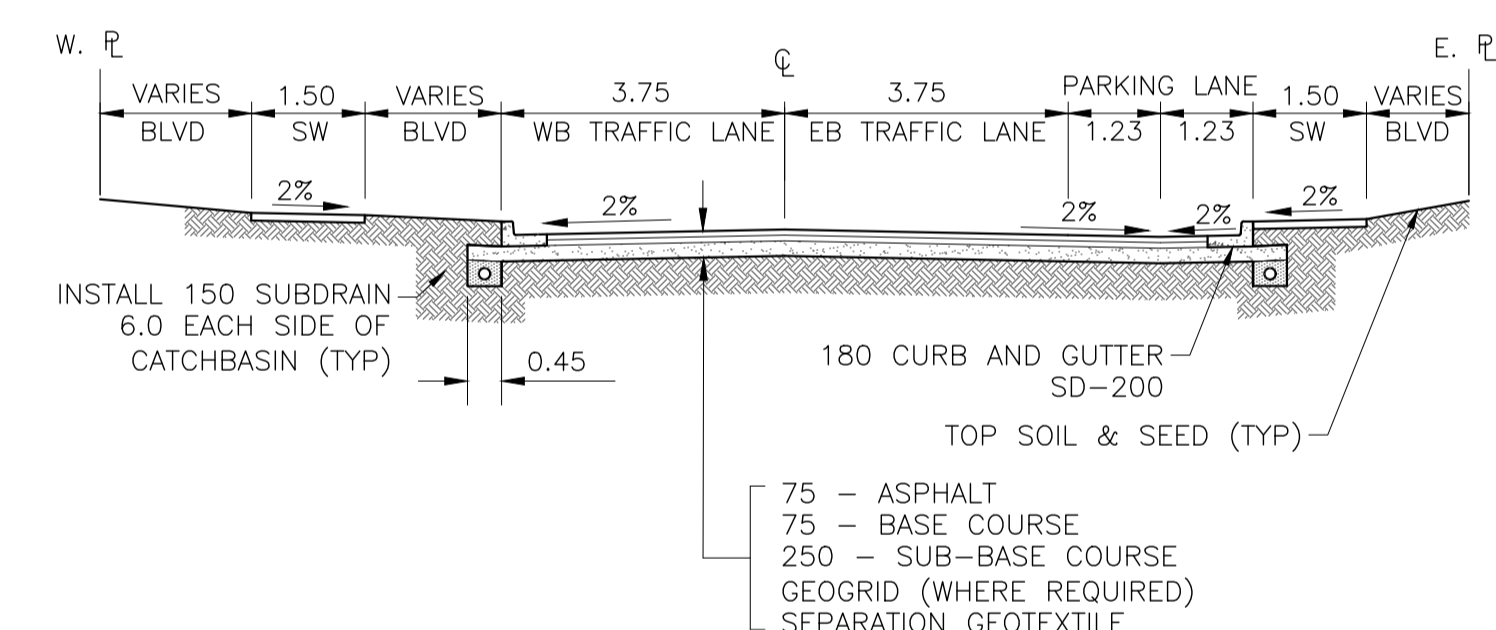
JAMISON AVENUE - PROFILE

NOTES:

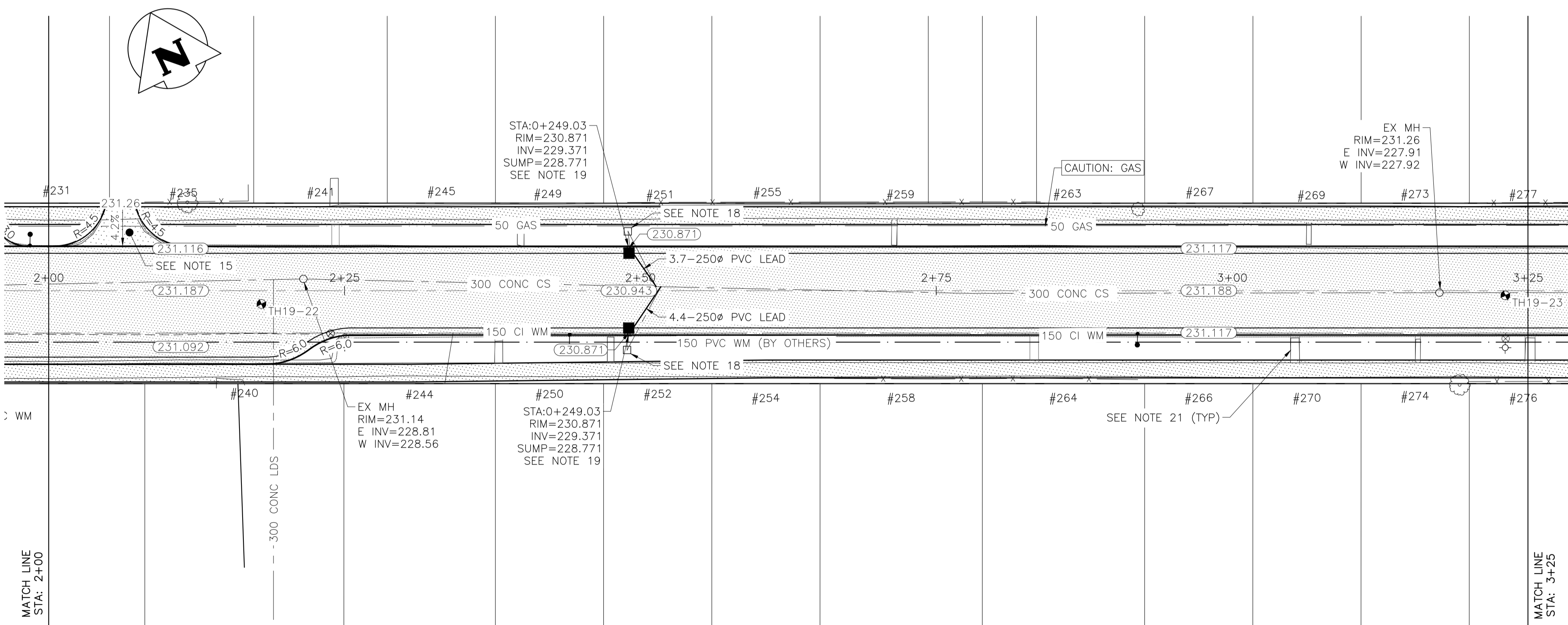
1. ALL WORKS TO BE IN ACCORDANCE WITH THE LATEST REVISION OF THE CITY OF WINNIPEG STANDARD CONSTRUCTION SPECIFICATIONS.
2. LEGAL PLAN AND UNDERGROUND INFORMATION BASED ON CITY OF WINNIPEG LBIS AND RECORD DRAWINGS. CONTRACTOR TO VERIFY LOCATION OF ALL UNDERGROUND STRUCTURES ON SITE.
3. STATION CHAINAGE IS BASED ON CENTRELINE OF PROPOSED ROADWAY.
4. EAST PROPERTY LINE OF HENDERSON HIGHWAY IS STA 1+00.
5. ALL MEASUREMENTS TO BACK OF CURB
6. ALL EXISTING TREES TO BE PROTECTED AND MAINTAINED THROUGHOUT CONSTRUCTION UNLESS NOTED OTHERWISE.
7. ALL BUS STOPS AND WINNIPEG TRANSIT PROPERTY WITHIN LIMITS OF CONSTRUCTION TO BE TEMPORARILY RELOCATED BY OTHERS DURING WORKS.
8. HAND OR SOFT DIG METHODS REQUIRED OVER GAS UTILITIES AT INTERVALS DETERMINED BY THE CONTRACT ADMINISTRATOR TO DETERMINE DEPTH OF COVER.
9. NO WORKS, INCLUDING CONCRETE CUTTING OR BREAKING, TO BE UNDERTAKEN NEAR GAS LINES UNTIL DEPTH OF COVER IS DETERMINED AND A MANITOBA HYDRO SAFETY WATCH REPRESENTATIVE IS ON SITE.
10. ANY GAS MAINS OR SERVICES EXPOSED IN THE EXCAVATION AREA TO BE ROCK WRAPPED IN ACCORDANCE WITH MANITOBA HYDRO STANDARDS PRIOR TO WORK PROCEEDING ON SITE.
11. NO VIBRATORY COMPACTION PERMITTED WITHIN 1M OF GAS MAINS.
12. INSTALL NEW MODIFIED BARRIER CURB AND GUTTER (SD-203B) AT ALL INTERSECTION RADII.
13. CONSTRUCT NEW MONOLITHIC CURB RAMP (10MM HEIGHT INTEGRAL) (SD-229A) AT ALL INTERSECTIONS.
14. INSTALL DETECTABLE WARNING SURFACE TILE (SD-229AB) AT STREET INTERSECTIONS.
15. REMOVE AND REPLACE CONCRETE APPROACH WITH 200 REINFORCED CONCRETE APPROACH. MATCH GRADE AT GUTTER AND R.
16. REMOVE AND REPLACE CONCRETE APPROACH WITH 200 REINFORCED CONCRETE APPROACH C/W 40MM LIP CURB (SD-202B). MATCH GRADE AT GUTTER AND R.
17. MAXIMUM 4% CROSSFALL ACROSS SIDEWALK TRAVEL PATH AT APPROACH LOCATIONS.
18. REMOVE EXISTING CATCH BASIN AND MANHOLE AND ABANDON LEAD.
19. INSTALL CATCHBASIN C/W BARRIER CURB AND GUTTER INLET FRAME AND BOX AND INLET COVER (SD-024). CONNECT TO EXISTING CS WITH 250 PVC MIN 2.0% GRADE. INSTALL 6.0, 150Ø SUBDRAIN (SD-245) BOTH SIDES OF ALL PROPOSED CATCHBASINS.
20. INSTALL CATCHBASIN C/W STANDARD FRAME AND GRATED COVER (SD-024). CONNECT TO EXISTING CS WITH 250 PVC MIN 2.0% GRADE. INSTALL 6.0, 150Ø SUBDRAIN (SD-245) BOTH SIDES OF ALL PROPOSED CATCHBASINS.
21. ADJUST SIDEWALK BLOCKS TO MATCH GRADE BETWEEN NEW SIDEWALK AND BACK OF CURB.



TYPICAL CROSS-SECTION



TYPICAL CROSS-SECTION WITH PARKING LANE



JAMISON AVENUE - PLAN

LOCATIONS OF UNDERGROUND STRUCTURES AS SHOWN ARE BASED ON THE BEST INFORMATION AVAILABLE. BUT NO GUARANTEE IS GIVEN THAT ALL EXISTING UTILITIES ARE SHOWN OR THAT THE GIVEN LOCATIONS ARE EXACT. CONFIRMATION OF THE EXISTENCE AND EXACT LOCATION OF ALL SERVICES MUST BE OBTAINED FROM INDIVIDUAL UTILITIES BEFORE PROCEEDING WITH CONSTRUCTION.

PROPERTY LIMITS DELINEATION

DELINEATION OF PROPERTY LIMITS AS SHOWN ON THIS DWG DOES NOT REPRESENT A "LEGAL SURVEY". KGS GROUP MAKES NO REPRESENTATION OR WARRANTY AS TO THE ACCURACY OF PROPERTY LIMITS DELINEATED ON THIS DWG, NOR ON THE DIMENSIONAL ACCURACY OF DWG FEATURES RELATIVE TO THOSE PROPERTY LIMITS.

WARNING

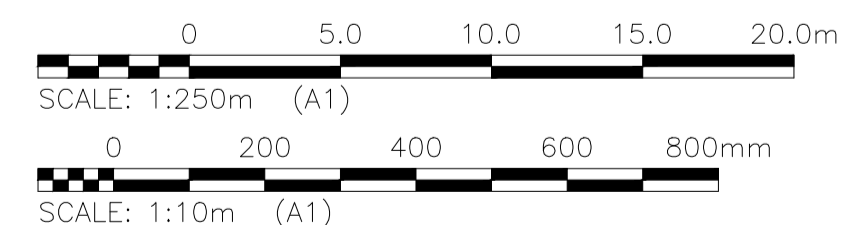
NOTIFY THE GAS COMPANY OF THE PROPOSED LOCATION OF EXCAVATION.

TAKE PRECAUTION TO AVOID DAMAGE TO GAS COMPANY INSTALLATIONS.

SEE PROVINCIAL REGULATION 210/72 FOR DETAILS.

METRIC

WHOLE NUMBERS INDICATE MILLIMETRES
DECIMALIZED NUMBERS INDICATE METRES



PRELIMINARY

NOT TO BE USED FOR CONSTRUCTION

EXISTING	LEGEND-PLAN	PROPOSED	EXISTING	LEGEND-PLAN	PROPOSED
	LAND DRAINAGE SEWER			LAND DRAINAGE SEWER	
	WASTE WATER SEWER			WASTE WATER SEWER	
	GAS			GAS	
	HYDRO			HYDRO	
	M.T.S.			M.T.S.	
	WATERMAIN			WATERMAIN	
	HYDRANT			HYDRANT	
	VALVE			VALVE	
	MANHOLE			MANHOLE	
	CATCH BASIN			CATCH BASIN	
	CURB INLET			CURB INLET	
	POLES			POLES	
	TEST HOLE			TEST HOLE	
	GUY WIRE			GUY WIRE	
	LIGHT STANDARD			LIGHT STANDARD	
	BACK OF CURB			BACK OF CURB	
	CONCRETE			CONCRETE	
	ASPHALT			ASPHALT	
	SIDEWALK			SIDEWALK	
	PROPERTY LINE			PROPERTY LINE	
	SURVEY BAR			SURVEY BAR	
	GEODETIC BENCHMARK			GEODETIC BENCHMARK	
	ELEVATION			ELEVATION	
	PROFILE			PROFILE	
	NORTH & WEST GUTTER			NORTH & WEST GUTTER	
	SOUTH & EAST GUTTER			SOUTH & EAST GUTTER	
	N/W LANE R			N/W LANE R	
	S/E MEDIAN R			S/E MEDIAN R	
	PARKING/DRIVEWAY			PARKING/DRIVEWAY	
	WINDOW/DOOR SILL			WINDOW/DOOR SILL	

LOCATION APPROVED UNDERGROUND STRUCTURES

SUPV. U/G STRUCTURES COMMITTEE DATE

NOTE: LOCATION OF UNDERGROUND STRUCTURES AS SHOWN ARE BASED ON THE BEST INFORMATION AVAILABLE BUT NO GUARANTEE IS GIVEN THAT ALL EXISTING UTILITIES ARE SHOWN OR THAT THE GIVEN LOCATIONS ARE EXACT. CONFIRMATION OF THE EXISTENCE AND EXACT LOCATION OF ALL SERVICES MUST BE OBTAINED FROM THE INDIVIDUAL UTILITIES BEFORE PROCEEDING WITH CONSTRUCTION.

B.I.M. KGS_BASE ELEV. 249.213

COORDINATE SYSTEM: CGVD28

ENGINEER'S SEAL

THE CITY OF WINNIPEG
PUBLIC WORKS DEPARTMENT
ENGINEERING DIVISION

PROJECT TITLE
2019 LOCAL STREET PACKAGE

JAMISON AVENUE

PLAN AND PROFILE
02+00 TO 03+25

SHEET 13 OF 17

COMPUTER FILE NAME
18-0107-016_34
JAMISON.DWG

CITY DRAWING NUMBER

DESIGNED BY	EW	CHECKED BY	
DRAWN BY	EW	APPROVED BY	
B ISSUED FOR TENDER	19/05/08	HOR. SCALE: 1:250	RELEASED FOR CONSTRUCTION:
A ISSUED FOR REVIEW	19/03/22 JB	VERTICAL: 1:10	DATE
NO. REVISIONS	DATE	DATE	2019/01/24

CONSULTANT DRAWING NO. **C112**