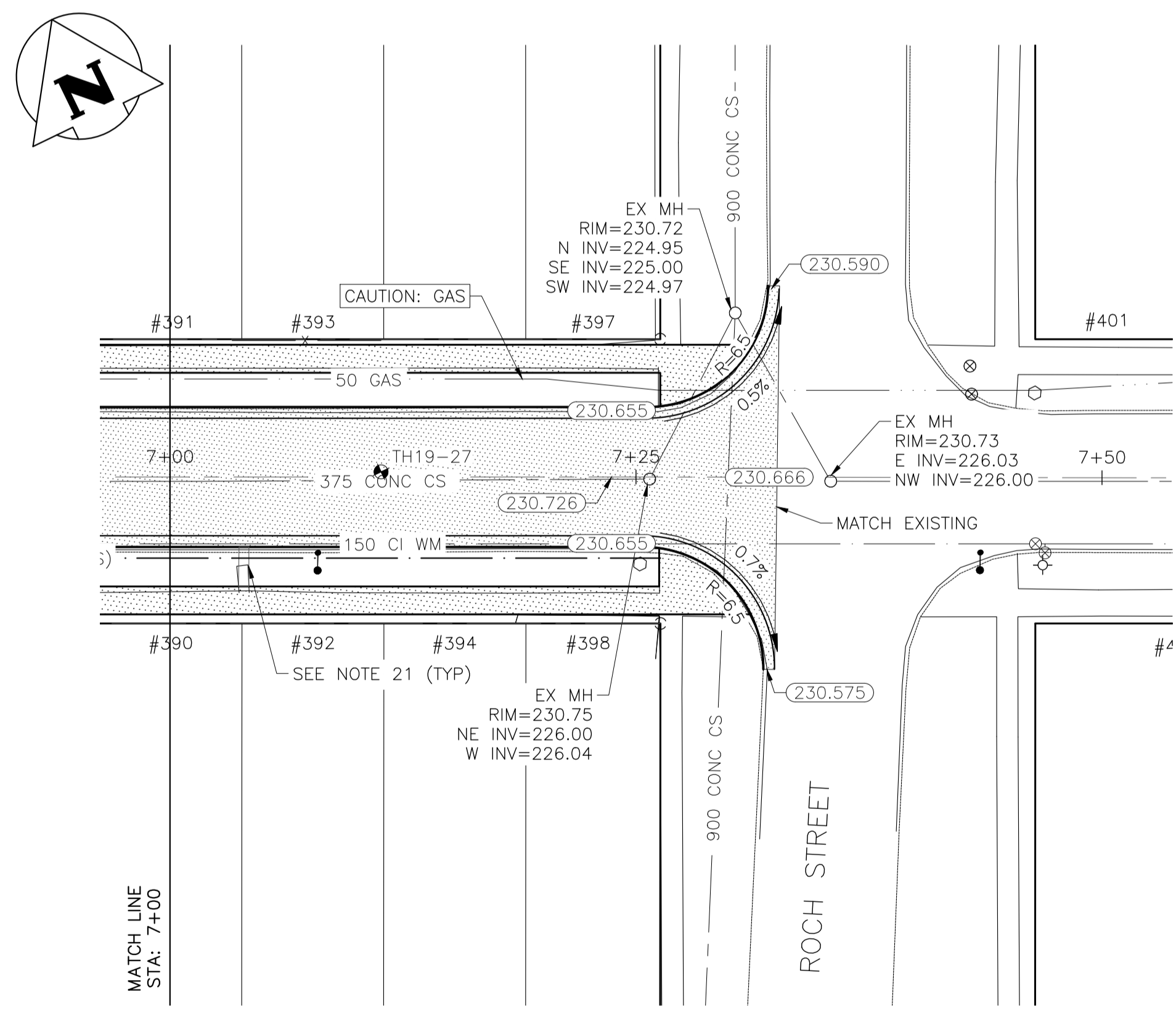
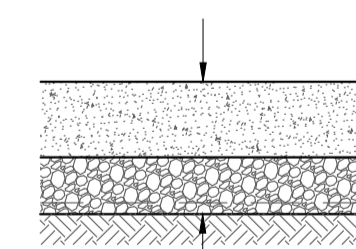


JAMISON AVENUE - PROFILE



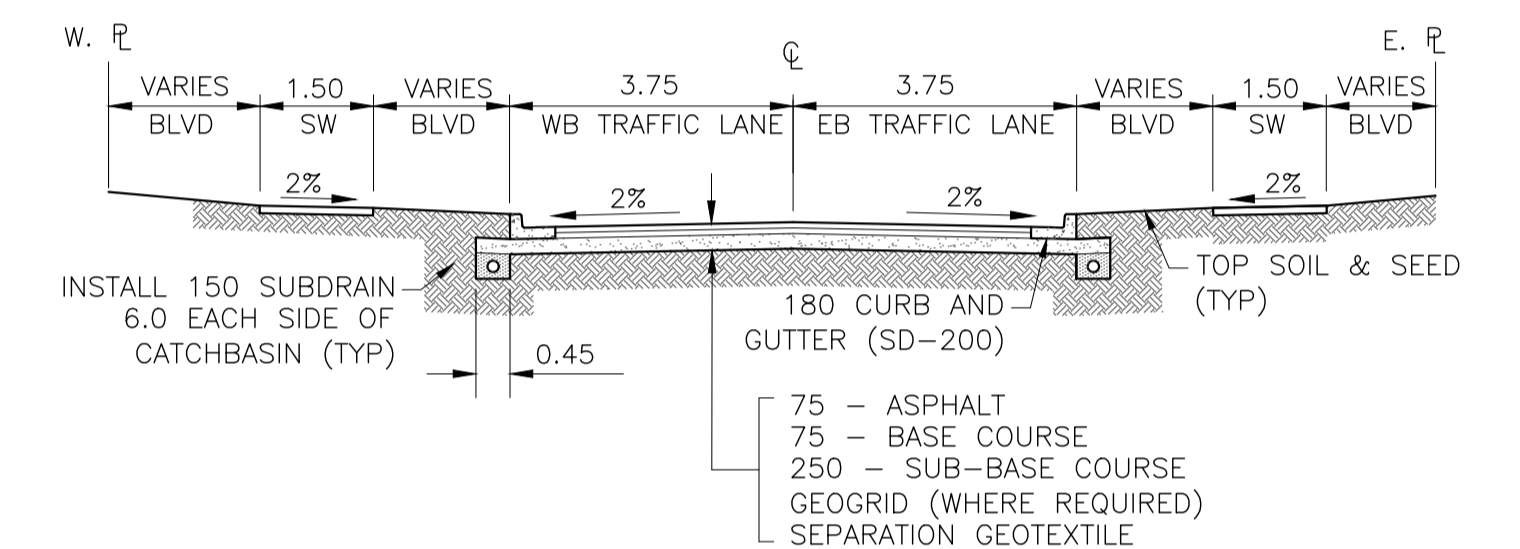
JAMISON AVENUE - PLAN



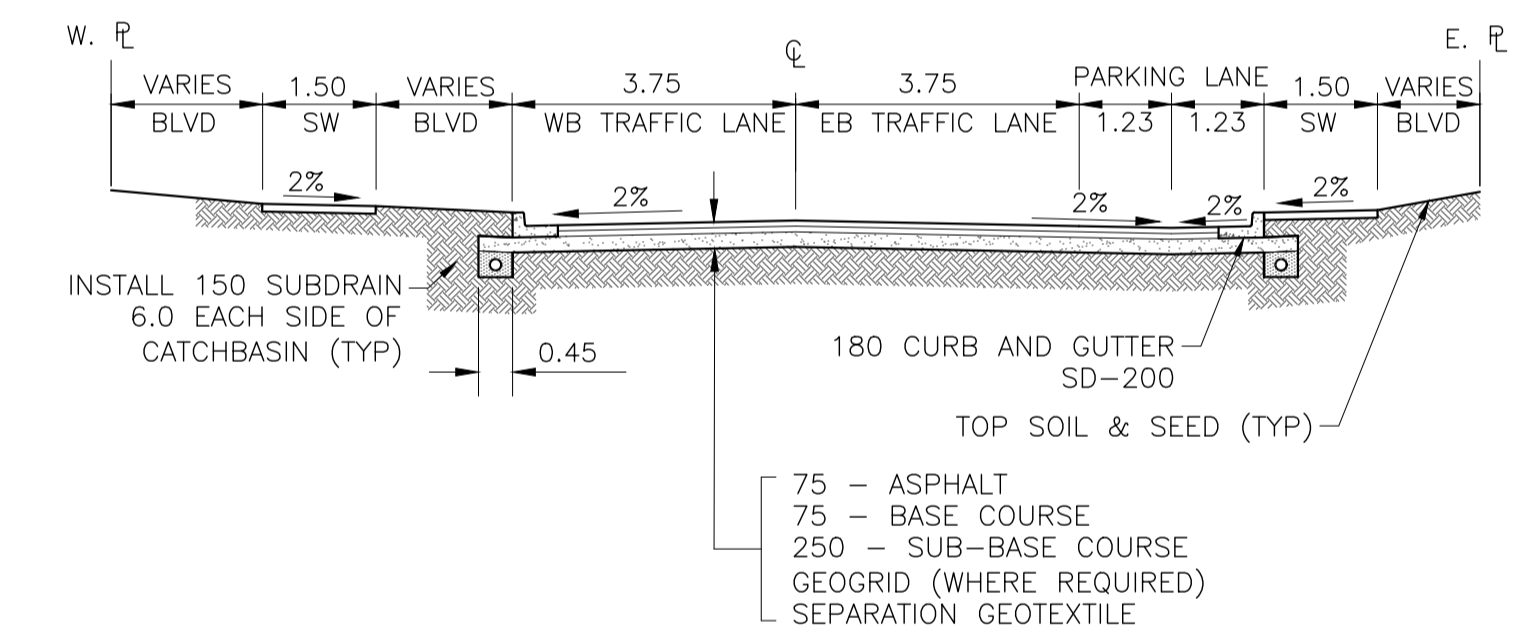
CONCRETE APPROACH SECTION

NOTES:

1. ALL WORKS TO BE IN ACCORDANCE WITH THE LATEST REVISION OF THE CITY OF WINNIPEG STANDARD CONSTRUCTION SPECIFICATIONS.
2. LEGAL PLAN AND UNDERGROUND INFORMATION BASED ON CITY OF WINNIPEG LBIS AND RECORD DRAWINGS. CONTRACTOR TO VERIFY LOCATION OF ALL UNDERGROUND STRUCTURES ON SITE.
3. STATION CHAINAGE IS BASED ON CENTRELINE OF PROPOSED ROADWAY.
4. EAST PROPERTY LINE OF HENDERSON HIGHWAY IS STA 1+00.
5. ALL MEASUREMENTS TO BACK OF CURB
6. ALL EXISTING TREES TO BE PROTECTED AND MAINTAINED THROUGHOUT CONSTRUCTION UNLESS NOTED OTHERWISE.
7. ALL BUS STOPS AND WINNIPEG TRANSIT PROPERTY WITHIN LIMITS OF CONSTRUCTION TO BE TEMPORARILY RELOCATED BY OTHERS DURING WORKS.
8. HAND OR SOFT DIG METHODS REQUIRED OVER GAS UTILITIES AT INTERVALS DETERMINED BY THE CONTRACT ADMINISTRATOR TO DETERMINE DEPTH OF COVER.
9. NO WORKS, INCLUDING CONCRETE CUTTING OR BREAKING, TO BE UNDERTAKEN NEAR GAS LINES UNTIL DEPTH OF COVER IS DETERMINED AND A MANITOBA HYDRO SAFETY WATCH REPRESENTATIVE IS ON SITE.
10. ANY GAS MAINS OR SERVICES EXPOSED IN THE EXCAVATION AREA TO BE ROCK WRAPPED IN ACCORDANCE WITH MANITOBA HYDRO STANDARDS PRIOR TO WORK PROCEEDING ON SITE.
11. NO VIBRATORY COMPACTION PERMITTED WITHIN 1M OF GAS MAINS.
12. INSTALL NEW MODIFIED BARRIER CURB AND GUTTER (SD-203B) AT ALL INTERSECTION RADII.
13. CONSTRUCT NEW MONOLITHIC CURB RAMP (10MM HEIGHT INTEGRAL) (SD-229A) AT ALL INTERSECTIONS.
14. INSTALL DETECTABLE WARNING SURFACE TILE (SD-229AB) AT STREET INTERSECTIONS.
15. REMOVE AND REPLACE CONCRETE APPROACH WITH 200 REINFORCED CONCRETE APPROACH. MATCH GRADE AT GUTTER AND R.
16. REMOVE AND REPLACE CONCRETE APPROACH WITH 200 REINFORCED CONCRETE APPROACH C/W 40MM LIP CURB (SD-202B). MATCH GRADE AT GUTTER AND R.
17. MAXIMUM 4% CROSSFALL ACROSS SIDEWALK TRAVEL PATH AT APPROACH LOCATIONS.
18. REMOVE EXISTING CATCH BASIN AND MANHOLE AND ABANDON LEAD.
19. INSTALL CATCHBASIN C/W BARRIER CURB AND GUTTER INLET FRAME AND BOX AND INLET COVER (SD-024). CONNECT TO EXISTING CS WITH 250 PVC MIN 2.0% GRADE. INSTALL 6.0, 150Ø SUBDRAIN (SD-245) BOTH SIDES OF ALL PROPOSED CATCHBASINS.
20. INSTALL CATCHBASIN C/W STANDARD FRAME AND GRATED COVER (SD-024). CONNECT TO EXISTING CS WITH 250 PVC MIN 2.0% GRADE. INSTALL 6.0, 150Ø SUBDRAIN (SD-245) BOTH SIDES OF ALL PROPOSED CATCHBASINS.
21. ADJUST SIDEWALK BLOCKS TO MATCH GRADE BETWEEN NEW SIDEWALK AND BACK OF CURB.



TYPICAL CROSS-SECTION

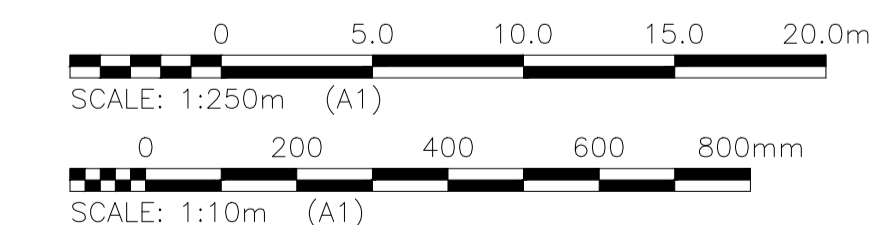


TYPICAL CROSS-SECTION WITH PARKING LANE

<p>LOCATIONS OF UNDERGROUND STRUCTURES AS SHOWN ARE BASED ON THE BEST INFORMATION AVAILABLE. BUT NO GUARANTEE IS GIVEN THAT ALL EXISTING UTILITIES ARE SHOWN OR THAT THE GIVEN LOCATIONS ARE EXACT. CONFIRMATION OF THE EXISTENCE AND EXACT LOCATION OF ALL SERVICES MUST BE OBTAINED FROM INDIVIDUAL UTILITIES BEFORE PROCEEDING WITH CONSTRUCTION.</p>	<p>PROPERTY LIMITS DELINEATION</p> <p>DELINEATION OF PROPERTY LIMITS AS SHOWN ON THIS DWG DOES NOT REPRESENT A "LEGAL SURVEY". KGS GROUP MAKES NO REPRESENTATION OR WARRANTY AS TO THE ACCURACY OF PROPERTY LIMITS DELINEATED ON THIS DWG, NOR ON THE DIMENSIONAL ACCURACY OF DWG FEATURES RELATIVE TO THOSE PROPERTY LIMITS.</p>	<p>WARNING</p> <p>NOTIFY THE GAS COMPANY OF THE PROPOSED LOCATION OF EXCAVATION.</p> <p>TAKE PRECAUTION TO AVOID DAMAGE TO GAS COMPANY INSTALLATIONS.</p> <p>SEE PROVINCIAL REGULATION 210/72 FOR DETAILS.</p>
--	--	---

METRIC

WHOLE NUMBERS INDICATE MILLIMETRES
DECIMALIZED NUMBERS INDICATE METRES



PRELIMINARY

NOT TO BE USED FOR CONSTRUCTION

U:\FMS\18-0107-016\18-0107-016_34 JAMISON.DWG 2019-05-08 PLOT 1:1 (A-1)

EXISTING	LEGEND-PLAN	PROPOSED	EXISTING	LEGEND-PLAN	PROPOSED	EXISTING	LEGEND-PROFILE	PROPOSED
300_LDS	LAND DRAINAGE SEWER	300_LDS	TEST HOLE					
250_WWS	WASTE WATER SEWER	250_WWS	GUY WIRE					
---	GAS	---	LIGHT STANDARD					
---	HYDRO	---	BACK OF CURB					
---	M.T.S.	---	CONCRETE					
150_WM	WATERMAIN	150_WM	ASPHALT					
+	HYDRANT	+	SIDEWALK					
o	VALVE	o	PROPERTY LINE					
o	MANHOLE	o	SURVEY BAR					
□	CATCH BASIN	□	GEODETIC BENCHMARK					
▽	CURB INLET	▽	ELEVATION					
•	POLES	•						
•	POLES	•						

<p>LOCATION APPROVED UNDERGROUND STRUCTURES</p> <p>SUPV. U/G STRUCTURES COMMITTEE DATE</p> <p>NOTE: LOCATION OF UNDERGROUND STRUCTURES AS SHOWN ARE BASED ON THE BEST INFORMATION AVAILABLE BUT NO GUARANTEE IS GIVEN THAT ALL EXISTING UTILITIES ARE SHOWN OR THAT THE GIVEN LOCATIONS ARE EXACT. CONFIRMATION OF THE EXISTENCE AND EXACT LOCATION OF ALL SERVICES MUST BE OBTAINED FROM THE INDIVIDUAL UTILITIES BEFORE PROCEEDING WITH CONSTRUCTION.</p>			<p>B.I.M. KGS_BASE ELEV. 249.213</p> <p>COORDINATE SYSTEM: CGVD28</p>	<p>KGS GROUP CONSULTING ENGINEERS</p>	<p>ENGINEER'S SEAL</p>
<p>DESIGNED BY: EW</p> <p>DRAWN BY: EW</p>			<p>CHECKED BY:</p> <p>APPROVED BY:</p>		<p>PROJECT TITLE</p> <p>2019 LOCAL STREET PACKAGE</p> <p>JAMISON AVENUE</p> <p>PLAN AND PROFILE 07+00 TO 07+50</p>
<p>B ISSUED FOR TENDER 19/05/08</p> <p>A ISSUED FOR REVIEW 19/03/22 JB</p>			<p>HOR. SCALE: 1:250</p> <p>VERTICAL: 1:10</p> <p>RELEASED FOR CONSTRUCTION:</p>		<p>CONSULTANT DRAWING NO.</p> <p>C116</p>
<p>NO. REVISIONS</p> <p>DATE BY</p> <p>DATE 2019/01/24</p>			<p>DATE</p>		<p>SHEET 17 OF 17</p> <p>COMPUTER FILE NAME 18-0107-016_34 JAMISON.DWG</p> <p>CITY DRAWING NUMBER</p>