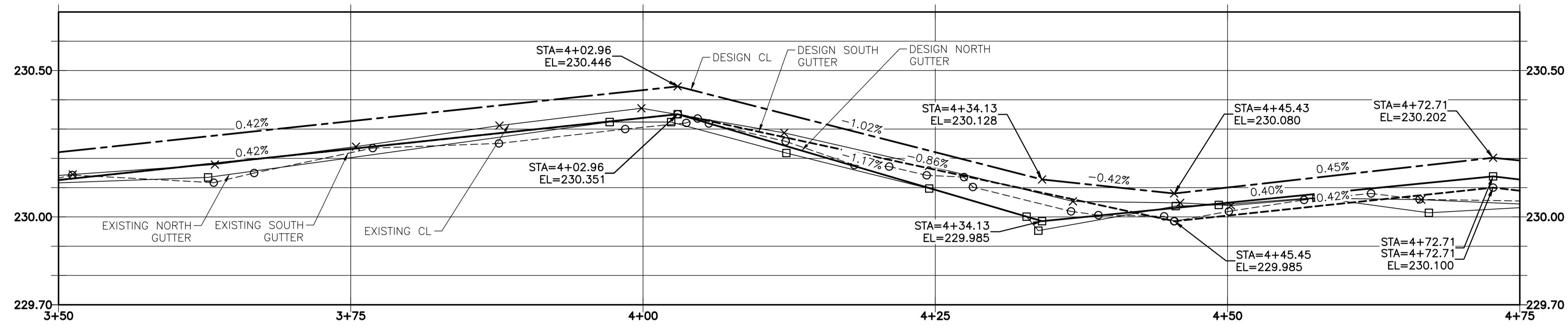
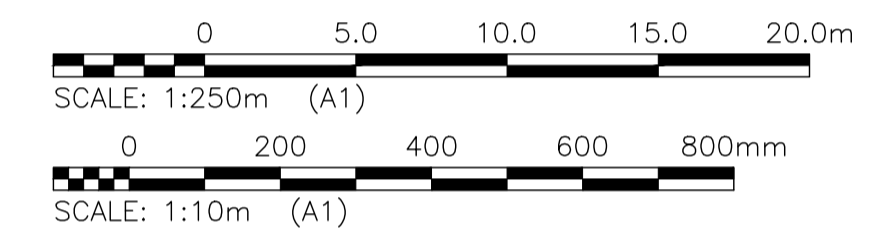


**NOTES:**

1. STATION IN CENTRE OF RIGHT-OF-WAY UNLESS OTHERWISE NOTED.
2. WEST PROPERTY LINE OF ROTHESAY AVENUE IS STA 1+00
3. ALL MEASUREMENTS TO BACK OF CURB.
4. ALL EXISTING TREES TO BE PROTECTED AND MAINTAINED THROUGHOUT CONSTRUCTION UNLESS NOTED OTHERWISE.
5. HAND OR SOFT DIG METHODS REQUIRED OVER GAS UTILITIES AT INTERVALS DETERMINED BY THE ENGINEER TO DETERMINE DEPTH OF COVER.
6. NO WORKS, INCLUDING CONCRETE CUTTING OR BREAKING, TO BE UNDERTAKEN NEAR GAS LINES UNTIL DEPTH OF COVER IS DETERMINED AND A MANITOBA HYDRO SAFETY WATCH REPRESENTATIVE IS ON SITE.
7. NO VIBRATORY COMPACTION PERMITTED WITHIN 1.0M OF GAS MAINS.
8. INSTALL MODIFIED BARRIER CURB AT ALL INTERSECTION RADII, ALLEY RADII, AND BULLNOSES.
9. CONSTRUCT NEW MONOLITHIC CURB RAMP (10mm HEIGHT INTEGRAL)
10. INSTALL DETECTABLE WARNING SURFACE TILE AT STREET INTERSECTIONS.
11. REMOVE EXISTING CURB AND CONSTRUCT NEW BARRIER CURB 150mm REVEAL, DOWELED.
12. INSTALL CATCH BASIN AND BARRIER CURB AND GUTTER INLET FRAME (SD-023). INSTALL NEW 250 LEAD @ 2% MINIMUM GRADE
13. CONSTRUCT ASPHALT OVERLAY ON DRIVEWAYS TO ACHIEVING MINIMUM GRADE
14. CONCRETE REPAIRS SHOWN BASED ON VISUAL INSPECTION PRIOR TO REMOVAL OF ASPHALT OVERLAY. FINAL REPAIR LIMITS AND DIMENSIONS MAY VARY FROM THOSE SHOWN.
15. ADJUST ALL WATER VALVES, WATER SERVICE VALVES, MANHOLES AND CATCH BASINS TO GRADE.



**EDISON AVENUE - PROFILE**



LOCATIONS OF UNDERGROUND STRUCTURES AS SHOWN ARE BASED ON THE BEST INFORMATION AVAILABLE. BUT NO GUARANTEE IS GIVEN THAT ALL EXISTING UTILITIES ARE SHOWN OR THAT THE GIVEN LOCATIONS ARE EXACT. CONFIRMATION OF THE EXISTENCE AND EXACT LOCATION OF ALL SERVICES MUST BE OBTAINED FROM INDIVIDUAL UTILITIES BEFORE PROCEEDING WITH CONSTRUCTION.

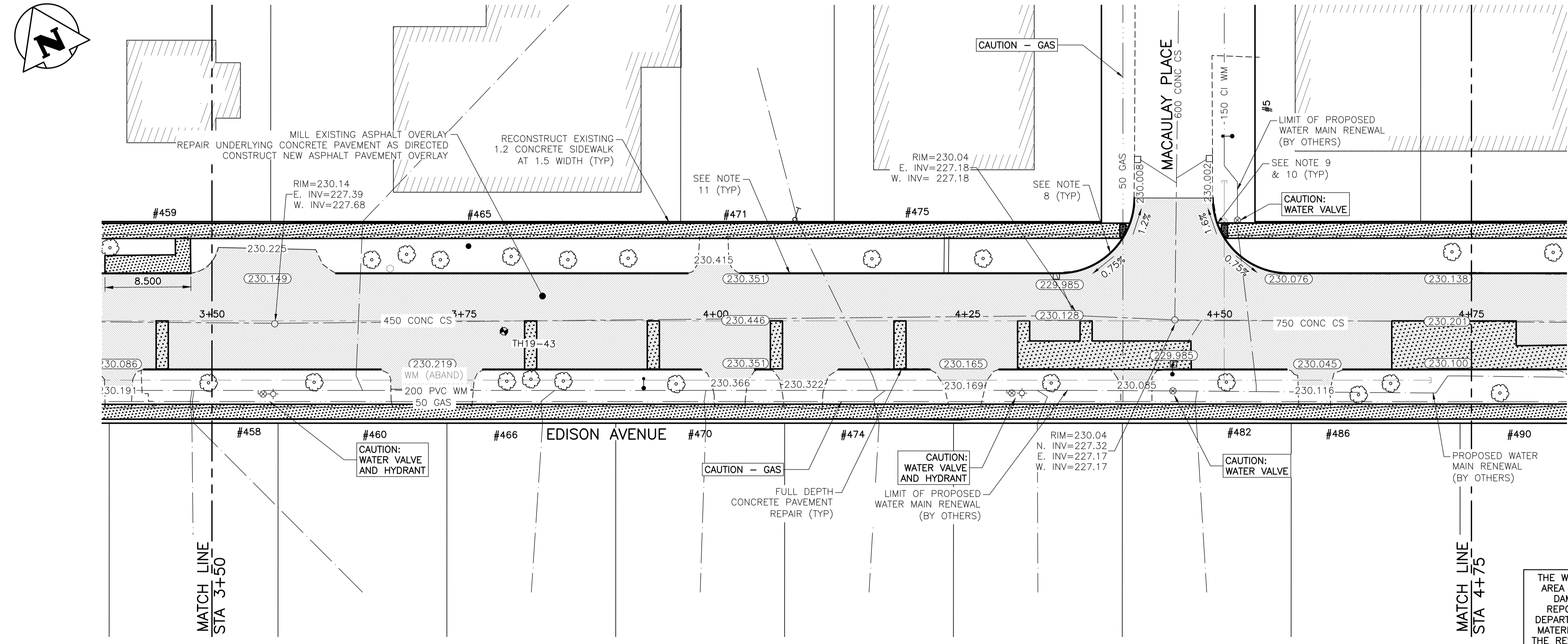
**PROPERTY LIMITS DELINEATION**  
DELINEATION OF PROPERTY LIMITS AS SHOWN ON THIS DWG DOES NOT REPRESENT A "LEGAL SURVEY". KGS GROUP MAKES NO REPRESENTATION OR WARRANTY AS TO THE ACCURACY OF PROPERTY LIMITS DELINEATED ON THIS DWG, NOR ON THE DIMENSIONAL ACCURACY OF DWG FEATURES RELATIVE TO THOSE PROPERTY LIMITS.

**WARNING**  
NOTIFY THE GAS COMPANY OF THE PROPOSED LOCATION OF EXCAVATION.  
TAKE PRECAUTION TO AVOID DAMAGE TO GAS COMPANY INSTALLATIONS.  
SEE PROVINCIAL REGULATION 210/72 FOR DETAILS.

**METRIC**  
WHOLE NUMBERS INDICATE MILLIMETRES  
DECIMALIZED NUMBERS INDICATE METRES

**PRELIMINARY**  
NOT TO BE USED FOR CONSTRUCTION

THE WATER DISTRIBUTION SYSTEM IN THIS AREA IS CATHODICALLY PROTECTED. ANY DAMAGE TO THIS SYSTEM MUST BE REPORTED TO THE WATER AND WASTE DEPARTMENT IMMEDIATELY AND ALL COSTS, MATERIALS AND LABOUR ASSOCIATED WITH THE RESTORATION OF THIS SYSTEM WILL BE THE RESPONSIBILITY OF THE CONTRACTOR AND/OR CONSULTANT.



**EDISON AVENUE - PLAN**

2019-05-01

U:\FMS\18-0107-016\18-0107-016\_35 EDISON.DWG  
PLOT: 1:1 (A-1)

EXISTING	LEGEND-PLAN	PROPOSED	EXISTING	LEGEND-PLAN	PROPOSED	EXISTING	LEGEND-PROFILE	PROPOSED
---	LAND DRAINAGE SEWER	---	⊕	TEST HOLE	⊕	---	⊕	⊕
---	WASTE WATER SEWER	---	⊕	GUY WIRE	⊕	---	⊕	⊕
---	GAS	---	⊕	LIGHT STANDARD	⊕	---	⊕	⊕
---	HYDRO	---	⊕	BACK OF CURB	⊕	---	⊕	⊕
---	M.T.S.	---	⊕	CONCRETE	⊕	---	⊕	⊕
---	WATERMAIN	---	⊕	ASPHALT	⊕	---	⊕	⊕
---	HYDRANT	---	⊕	SIDWALK	⊕	---	⊕	⊕
---	VALVE	---	⊕	PROPERTY LINE	⊕	---	⊕	⊕
---	MANHOLE	---	⊕	SURVEY BAR	⊕	---	⊕	⊕
---	CATCH BASIN	---	⊕	GEODETTIC BENCHMARK	⊕	---	⊕	⊕
---	CURB INLET	---	⊕	ELEVATION	⊕	---	⊕	⊕
---	POLES	---	⊕			---	⊕	⊕
---	LEGEND-PLAN	---	⊕			---	⊕	⊕
---		---	⊕			---	⊕	⊕

**LOCATION APPROVED UNDERGROUND STRUCTURES**

SUPV. U/G STRUCTURES DATE COMMITTEE

**NOTE:**  
LOCATION OF UNDERGROUND STRUCTURES AS SHOWN ARE BASED ON THE BEST INFORMATION AVAILABLE BUT NO GUARANTEE IS GIVEN THAT ALL EXISTING UTILITIES ARE SHOWN OR THAT THE GIVEN LOCATIONS ARE EXACT. CONFIRMATION OF EXISTENCE AND EXACT LOCATION OF ALL SERVICES MUST BE OBTAINED FROM THE INDIVIDUAL UTILITIES BEFORE PROCEEDING WITH CONSTRUCTION.

B	ISSUED FOR TENDER	19/05/02		
A	ISSUED FOR REVIEW	19/03/05	JB	
NO.	REVISIONS	DATE	BY	DATE

**KGS GROUP CONSULTING ENGINEERS**

DESIGNED BY: MH  
CHECKED BY: [ ]  
DRAWN BY: MH  
APPROVED BY: [ ]

HOR. SCALE: 1:250  
VERTICAL: 1:10

RELEASSED FOR CONSTRUCTION: [ ]

DATE: 2019/01/24

ENGINEER'S SEAL

CONSULTANT DRAWING NO. **C111**

**THE CITY OF WINNIPEG PUBLIC WORKS DEPARTMENT ENGINEERING DIVISION**

PROJECT TITLE: **2019 LOCAL STREET PACKAGE**

**EDISON AVENUE**

**PLAN AND PROFILE 3+50 TO 4+75**

SHEET 11 OF 21

COMPUTER FILE NAME: 18-0107-016\_35 EDISON.DWG

CITY DRAWING NUMBER: [ ]