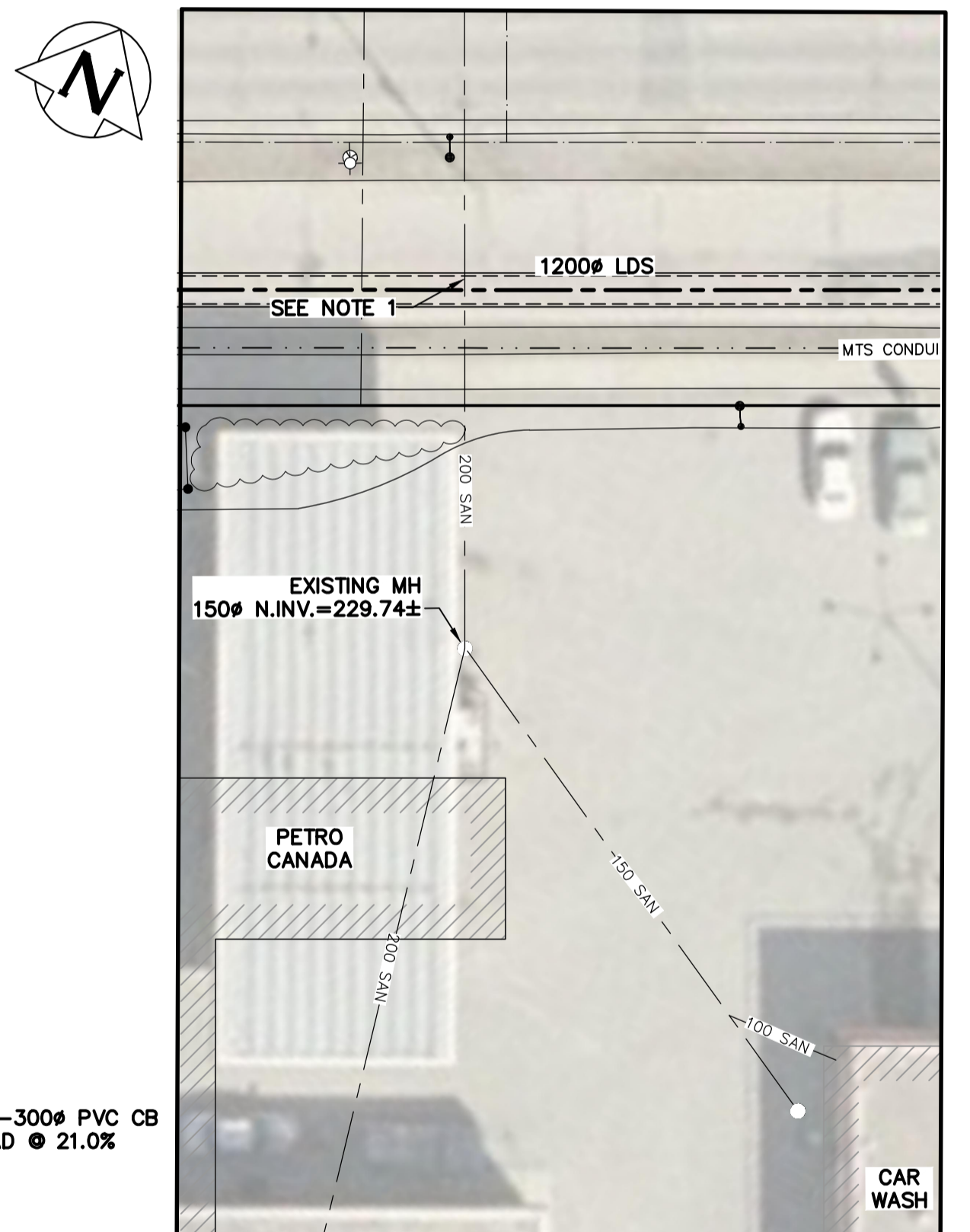
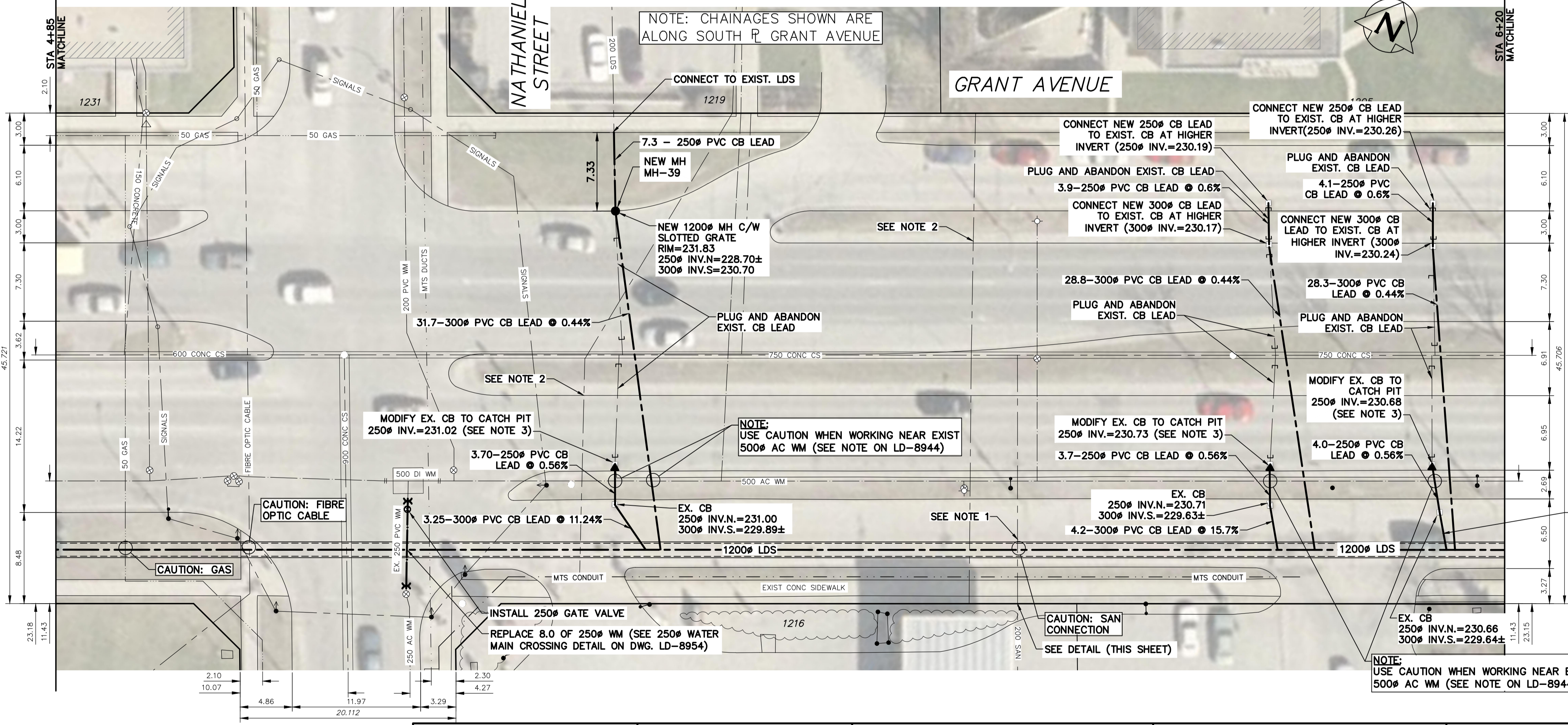


KEY PLAN (WEST)
SCALE: N.T.S.

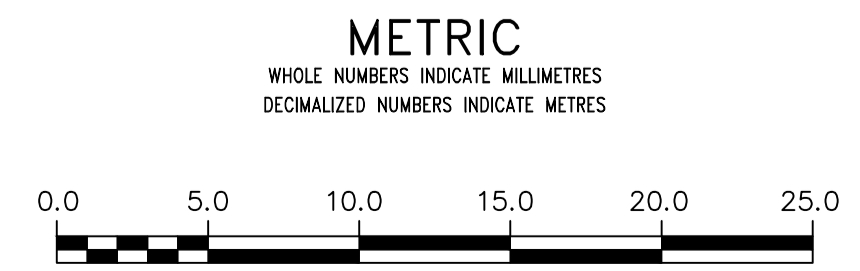
NOTES:

- SOFT DIG TO CONFIRM THE DEPTH OF EXISTING 150# SANITARY SERVICE COMING FROM PETRO CANADA WHICH TIES INTO EXISTING COMBINED SEWER ON GRANT AVE. REGRADE EXIST. SAN SERVICE IF IN CONFLICT WITH THE NEW LDS.
- ABANDONED OR POSSIBLE SEWER CONNECTION NOT DOCUMENTED IN THE CITY OF WINNIPEG RECORDS. THE CITY'S CCTV INSPECTION REPORT OF THE COMBINED SEWER SHOWS A PRESENCE OF A JUNCTION.
- TO MODIFY EXISTING CATCH BASIN TO CATCH PIT POUR LOW DENSITY CONCRETE (FLOWABLE FILL) TO THE NEW INVERT ELEVATION AND RECONNECT IT TO THE NEW CATCH BASIN.



PETRO CANADA CONNECTION DETAIL
SCALE: 1:250

ENGINEERS GEOSCIENTISTS MANITOBA
Certificate of Authorization
KGS Group
No. 245



WARNING
IF POWER EQUIPMENT OR EXPLOSIVES ARE TO BE USED FOR EXCAVATION ON THIS PROJECT THE CONTRACTOR MUST:
1) NOTIFY THE GAS COMPANY OF THE PROPOSED LOCATION OF EXCAVATION.
2) TAKE PRECAUTION TO AVOID DAMAGE TO GAS COMPANY INSTALLATIONS.
SEE PROVINCIAL REGULATION 210/72 FOR DETAILS

LOCATION APPROVED
UNDERGROUND STRUCTURES
SUPV. U/G STRUCTURES COMMITTEE DATE
NOTE:
LOCATION OF UNDERGROUND STRUCTURES AS SHOWN ARE BASED ON THE BEST INFORMATION AVAILABLE BUT NO GUARANTEE IS GIVEN THAT ALL EXISTING UTILITIES ARE SHOWN OR THAT THE GIVEN LOCATIONS ARE EXACT. CONFIRMATION OF EXISTENCES AND EXACT LOCATION OF ALL SERVICES MUST BE OBTAINED FROM THE INDIVIDUAL UTILITIES BEFORE PROCEEDING WITH CONSTRUCTION.

B.M. ELEV.	NO.	ISSUED FOR CONSTRUCTION	DATE	BY
	0	ISSUED FOR CONSTRUCTION	2019/04/17	

KGS GROUP CONSULTING ENGINEERS

DESIGNED BY	MID	CHECKED BY	
DRAWN BY	GEL	APPROVED BY	
SCALE:	HORIZONTAL 1:250 VERTICAL 1:50	RELEASED FOR CONSTRUCTION	
DATE	2019 04 17	DATE	

ENGINEER'S SEAL
CONSULTANT DRAWING NUMBER
11-0107-18-C12_LD-8948

THE CITY OF WINNIPEG
WATER AND WASTE DEPARTMENT
ENGINEERING DIVISION
COCKBURN & CALROSSIE SEWER RELIEF WORKS
CONTRACT 12
GRANT AVENUE
CAMBRIDGE STREET TO GUELPH STREET
STA 4+85 TO STA 6+20
SHEET 6 OF 12
CITY DRAWING NUMBER
LD-8948