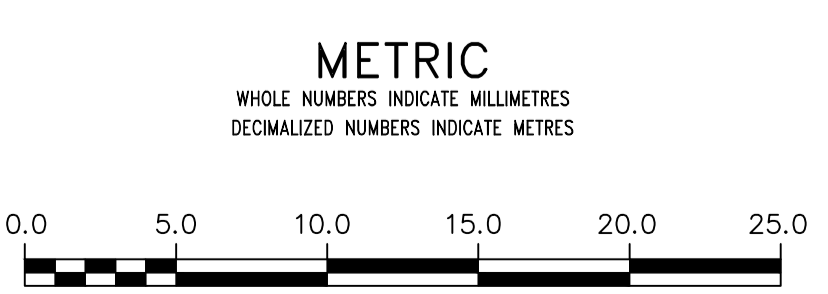
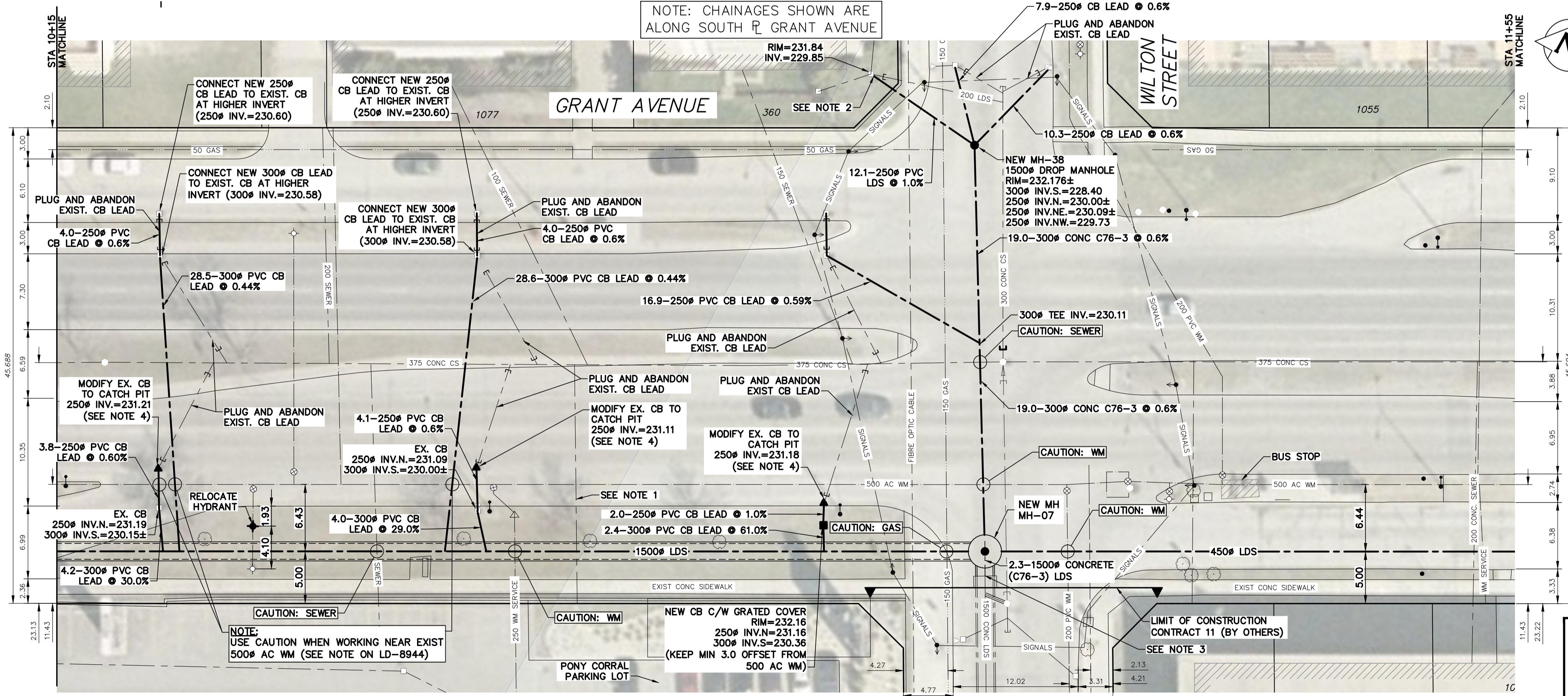


KEY PLAN (EAST)
SCALE: N.T.S.

- NOTES:**
1. ABANDONED OR POSSIBLE SEWER CONNECTION NOT DOCUMENTED IN THE CITY OF WINNIPEG RECORDS. THE CITY'S CCTV INSPECTION REPORT OF THE COMBINED SEWER SHOWS A PRESENCE OF A JUNCTION.
 2. RECONNECT EXISTING EX. CATCH BASIN AT SHALOM GARDENS TO THE NEW LDS PIPE.
 3. REMOVE EXISTING TEMPORARY PLUG, EXTEND EXISTING 1500# CONCRETE LDS (C76-3) AND RECONNECT TO THE NEW MANHOLE MH-07.
 4. TO MODIFY EXISTING CATCH BASIN TO CATCH PIT POUR LOW DENSITY CONCRETE (FLOWABLE FILL) TO THE NEW INVERT ELEVATION AND RECONNECT IT TO THE NEW CATCH BASIN.



WARNING

IF POWER EQUIPMENT OR EXPLOSIVES ARE TO BE USED FOR EXCAVATION ON THIS PROJECT THE CONTRACTOR MUST:

- 1) NOTIFY THE GAS COMPANY OF THE PROPOSED LOCATION OF EXCAVATION.
- 2) TAKE PRECAUTION TO AVOID DAMAGE TO GAS COMPANY INSTALLATIONS.

SEE PROVINCIAL REGULATION 210/72 FOR DETAILS

LOCATION APPROVED
UNDERGROUND STRUCTURES

SUPV. U/G STRUCTURES COMMITTEE DATE

NOTE:
LOCATION OF UNDERGROUND STRUCTURES AS SHOWN ARE BASED ON THE BEST INFORMATION AVAILABLE BUT NO GUARANTEE IS GIVEN THAT ALL EXISTING UTILITIES ARE SHOWN OR THAT THE GIVEN LOCATIONS ARE EXACT. CONFIRMATION OF EXISTENCE AND EXACT LOCATION OF ALL SERVICES MUST BE OBTAINED FROM THE INDIVIDUAL UTILITIES BEFORE PROCEEDING WITH CONSTRUCTION.

B.M. ELEV.	NO.	ISSUED FOR CONSTRUCTION	DATE	BY
	0	ISSUED FOR CONSTRUCTION	2019/04/17	
		REVISIONS	DATE	BY

DESIGNED BY	MID	CHECKED BY	
DRAWN BY	GEL	APPROVED BY	
SCALE:		RELEASED FOR CONSTRUCTION	
HORIZONTAL	1:250		
VERTICAL	1:50		
DATE	2019 04 17	DATE	

ENGINEER'S SEAL

CONSULTANT DRAWING NUMBER
11-0107-18-C12_LD-8952

ENGINEERS
GEOSCIENTISTS
MANITOBA

Certificate of Authorization
KGS Group
No. 245

THE CITY OF WINNIPEG
WATER AND WASTE DEPARTMENT
ENGINEERING DIVISION

COCKBURN & CALROSSIE SEWER RELIEF WORKS
CONTRACT 12
GRANT AVENUE
CAMBRIDGE STREET TO GUELPH STREET
STA 10+15 TO STA 11+55

SHEET 10 OF 12
CITY DRAWING NUMBER
LD-8952