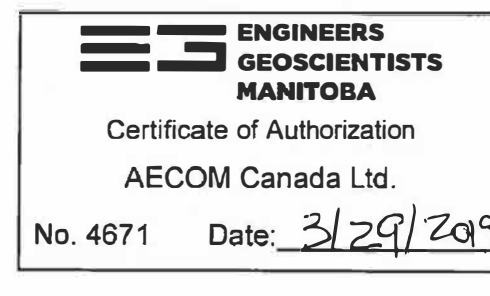
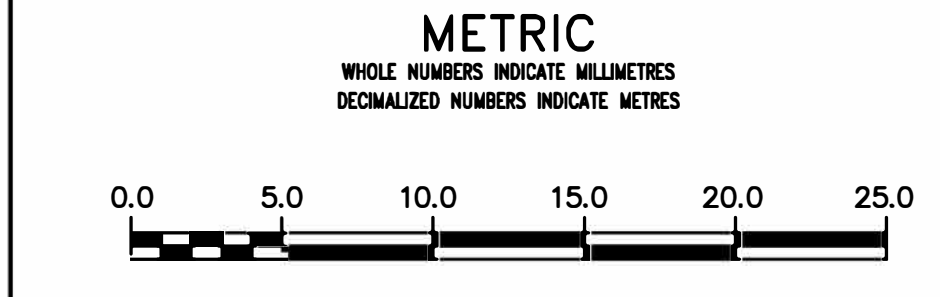
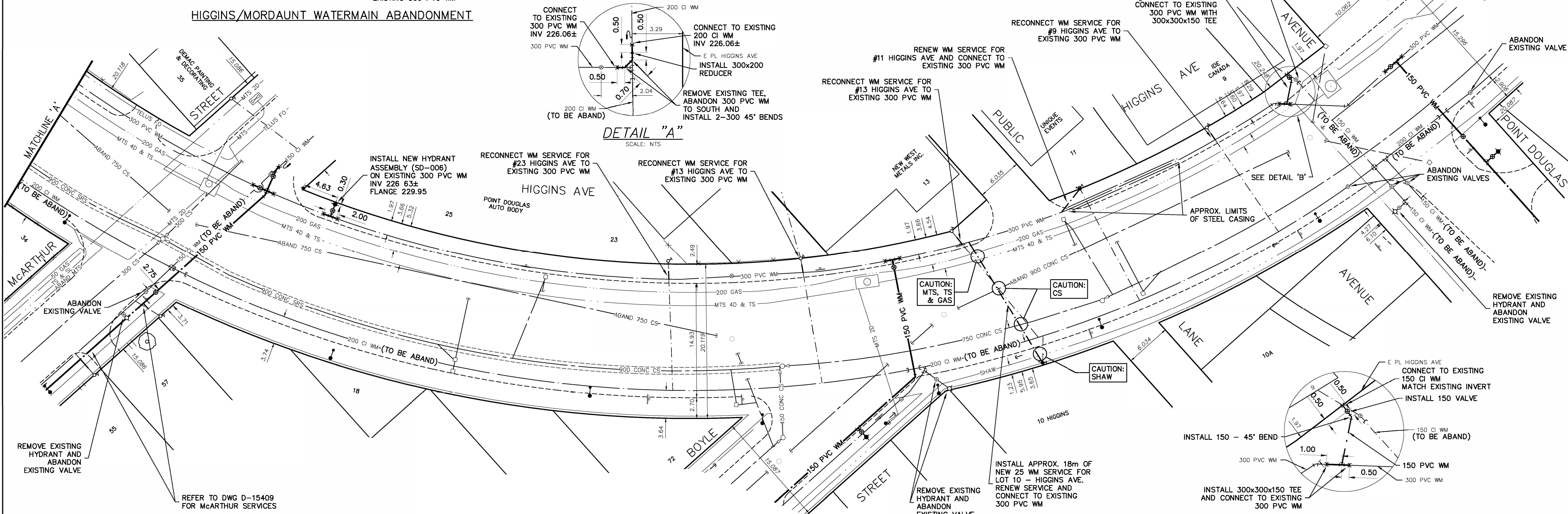


WATER SERVICE INFORMATION

ADDRESS	SIZE (mm) MATERIAL (STREET)	SIZE (mm) MATERIAL (PROP.)	SHORT & LONG MEASUREMENT	CORP. LOCATION	REMARKS
9 HIGGINS AV			19.2 m S SL OF PT DOUGLAS		RECONNECT
9 HIGGINS AV	150 mm CI		5.8 m S SL OF PT DOUGLAS		RECONNECT
11 HIGGINS AV	20 mm CU	20 mm CU	2.9 m N S BL	4.3 m N OF SC	RENEW
11 HIGGINS AV	20 mm CU	20 mm CU	30.2 m S SL OF PT DOUGLAS		ABANDON NOT IN SERVICE
13 HIGGINS AV	20 mm CU	20 mm CU	OPP SL OF STORE	14.1 m N NL BOYLE	RECONNECT
13 HIGGINS AV	20 mm CU	20 mm CU	4.9 m N S BL	1.4 m N OF SC	RECONNECT
13 HIGGINS AV			50.1 m S CURB POINT DOUGLAS		RECONNECT
23 HIGGINS AV	20 mm CU	20 mm CU	26.9 m S SL LANE		RECONNECT
23 HIGGINS AV	20 mm CU	20 mm CU	3.2 m S S BL	3.7 m N OF SC	RECONNECT
25 HIGGINS AV	20 mm CU	20 mm CU	31.1 m S HYDT		SERVICED OFF MCARTHUR
25 HIGGINS AV	20 mm CU	20 mm CU	5 m N S BL		OPP CS
35 HIGGINS AV	25 mm CU	25 mm CU	18.3 m N NL HIGGINS		SERVICED OFF MCARTHUR
35 HIGGINS AV	25 mm CU	25 mm CU	7 m N S BL	1.8 m N OF SC	SERVICED OFF MCARTHUR
34 HIGGINS AV	20 mm CU	25 mm CU	7.3 m N NL HIGGINS		RENEW AS 25MM
34 HIGGINS AV	20 mm CU	25 mm CU	4.7 m W E BL	0.8 m E OF SC	RENEW AS 25MM
37 HIGGINS AV	20 mm CU	20 mm CU	8.7 m W E BL		RECONNECT
41 HIGGINS AV	25 mm CU	25 mm CU	21.5 m S EL MORDAUNT		OPP CS
41 HIGGINS AV	25 mm CU	25 mm CU	8.2 m W E BL		W SC
41 HIGGINS AV			10.6 m W WL MORDAUNT		N.I.C. TAPPED OPP SIDE MAIN

* SERVICES TO BE RENEWED TO R. ALL OTHERS TO BE RECONNECTED

NOTE: LOCATION OF WATER SERVICES SHOWN ON DRAWINGS ARE APPROXIMATE. THE CONTRACTOR SHALL FIELD LOCATE ALL WATER SERVICES PRIOR TO CONSTRUCTION.



REFER TO DRAWING D-15408 FOR CONSTRUCTION NOTES

WARNING

IF POWER EQUIPMENT OR EXPLOSIVES ARE TO BE USED FOR EXCAVATION ON THIS PROJECT THE CONTRACTOR MUST:

- 1) NOTIFY THE GAS COMPANY OF THE PROPOSED LOCATION OF EXCAVATION.
- 2) TAKE PRECAUTION TO AVOID DAMAGE TO GAS COMPANY INSTALLATIONS.

SEE PROVINCIAL REGULATION 210/72 FOR DETAILS

LOCATION APPROVED UNDERGROUND STRUCTURES

SUPV. U/G STRUCTURES COMMITTEE DATE

NOTE:
LOCATION OF UNDERGROUND STRUCTURES AS SHOWN ARE BASED ON THE BEST INFORMATION AVAILABLE BUT NO GUARANTEE IS GIVEN THAT ALL EXISTING UTILITIES ARE SHOWN OR THAT THE GIVEN LOCATIONS ARE EXACT. CONFIRMATION OF EXISTENCE AND EXACT LOCATION OF ALL SERVICES MUST BE OBTAINED FROM THE INDIVIDUAL UTILITIES BEFORE PROCEEDING WITH CONSTRUCTION.

B.M.	35-017	N.W. Cor. Higgins Ave. & Gomez St., Tblt. in S. Conc.
ELEV.	230.730m	Foundation No. 109 Higgins Ave., 1.3 m W. & 1 m below brick of S.E. Cor. of Bldg.
DESIGNED BY	JP	CHECKED BY GSK
DRAWN BY	JP	APPROVED BY
SCALE:	HORIZONTAL 1:250	VERTICAL 1:50
DATE	2019/03/15	DATE
NO.	REVISIONS	DATE BY
0	ISSUED FOR TENDER	19/03/29 GSK
A	ISSUED FOR REVIEW	19/03/15 GSK

AECOM

ENGINEER'S SEAL

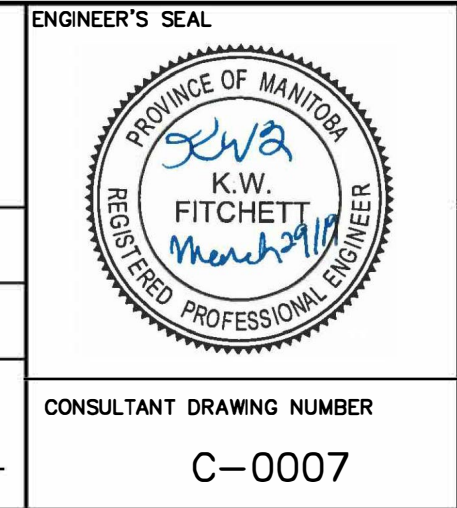
DESIGNED BY JP CHECKED BY GSK

DRAWN BY JP APPROVED BY

RELEASED FOR CONSTRUCTION

CONSULTANT DRAWING NUMBER C-0007

TENDER NUMBER: 377-2019
CONTRACT NUMBER: 7



THE CITY OF WINNIPEG
WATER AND WASTE DEPARTMENT
ENGINEERING DIVISION

2019 WATER MAIN RENEWALS
CONTRACT 7

HIGGINS AVENUE
MORDAUNT STREET TO
SUTHERLAND AVENUE

SHEET 9 OF 19
CITY DRAWING NUMBER D-15415