

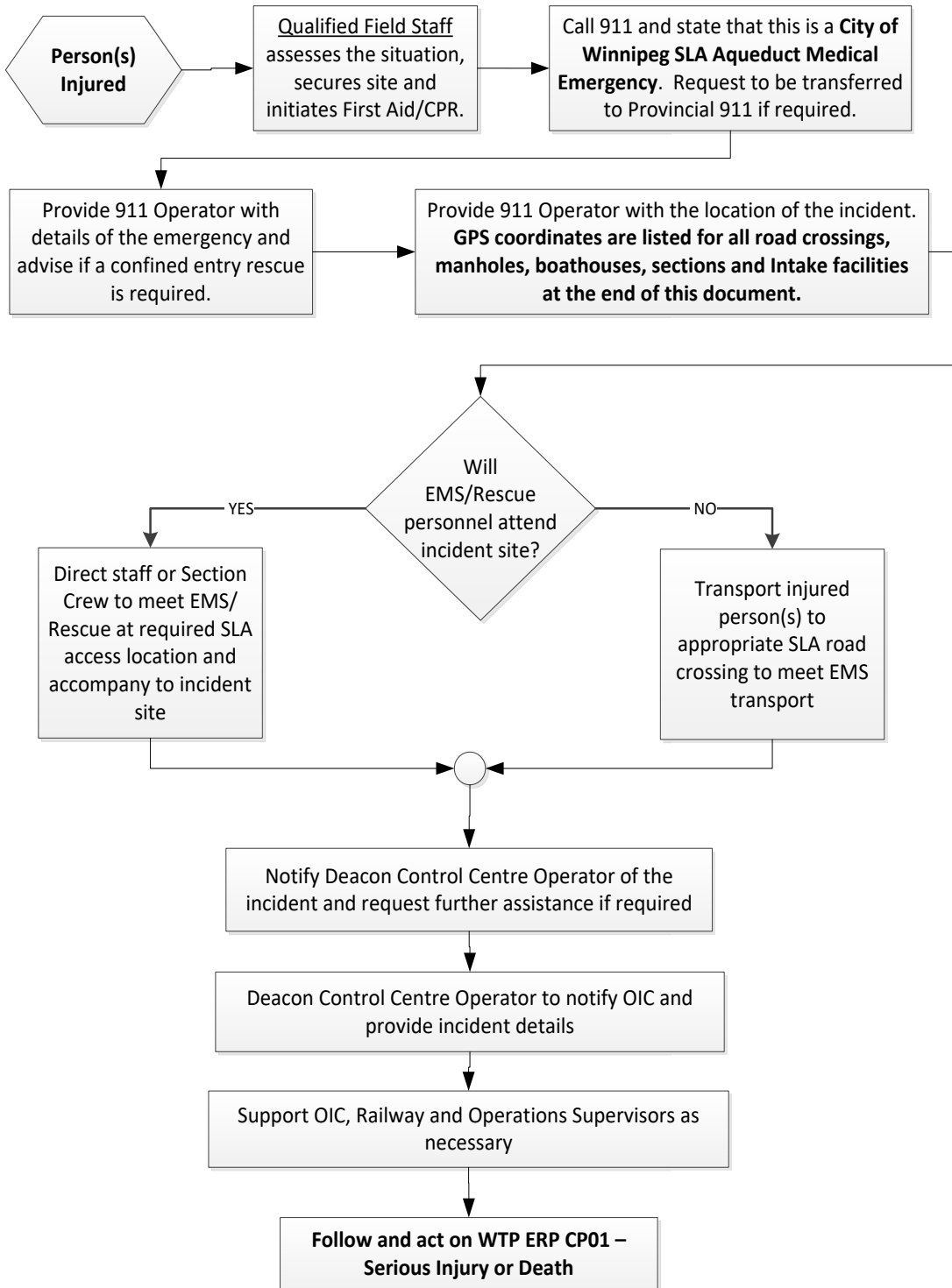
Appendix A

Shoal Lake Aqueduct Medical Emergency Response Plan MERP

MEDICAL EMERGENCY RESPONSE PLAN (SLA and Intake)

Notes:

1. Branch staff contacting 911 must provide a call back number to the 911 Operator.
2. Site personnel without access to a cell phone shall contact Deacon Control using a 2-way radio and request that Deacon Control call 911 on their behalf and forward the incident details.
3. For serious injuries at the Intake that require EMS attendance on site, staff must arrange pickup of EMS personnel at Mile 82.44.





Notes:

1. Branch staff contacting 911 must provide a call back number to the 911 Operator.
2. Site personnel without access to a cell phone shall contact Deacon Control using a 2-way radio and request that Deacon Control call 911 on their behalf and forward the incident details.
3. For serious injuries at the Intake that require EMS attendance on site, staff must arrange for the pickup of EMS personnel at Mile 82.44.

1. Step by Step

- If a person(s) is injured or becomes seriously ill field personnel assesses the situation and secures the site.
- If qualified as a First Aider field personnel applies first Aid/CPR to the injured person only if safe to do so.
- Field personnel calls 911. Depending on the location or use of cellular telephones or City of Winnipeg land lines; the call may go to either the Winnipeg 911 PSAP (Public Safety Answer Point) or Provincial 911 PSAP. Both PSAPs are aware of the Medical Emergency Response Plan (MERP). When speaking to the 911 Operator you must clearly state that the medical emergency is a **City of Winnipeg, Shoal Lake Aqueduct emergency medical and/or rescue confine entry rescue situation.**
- If calling 911 from the Ross Section Building, Hadashville Section Building or Intake Facility land phone line the call will transfer to the City 911 Operator ask to be transferred to Provincial 911 for medical response.
- The calling party must give the 911 Operator their phone number so 911 Operator call backs for incident clarification can be made.
- Field personnel must give sufficient details of the incident to the 911 Operator including; condition of the injured party, location of the accident, type of rescue required (confined entry, high angle, etc.), preferred ambulance location (Road Meeting Location) or GPS Coordinates; if Air Ambulance attendance is required.
- Based on the Provincial 911 triage directions prepare the injured person for travel to a selected Road Meeting location or Air Ambulance pick up. **GPS Coordinates for road crossings, man holes, boat houses and Intake facilities are listed at the end of this document.**



- For severe injuries at the Intake that require paramedics on site to stabilize the injured person have staff member wait at Mile 82.44 for the paramedics and transport them to the Intake.
- The Deacon Control Centre Operator must be notified of the incident and for further assistance if required. The Deacon Control Centre Operator must advise the OIC of the medical emergency.
- Support OIC, Railway and Operations Supervisors as necessary.
- Follow and act on information in **WTP ERP CP01 – Serious Injury or Death.**

2. Confined Entry Rescues

The decision for field staff to attempt a rescue out of the SLA or wait until medical/rescue help arrives will be made by the people at the scene based upon their judgement of the situation, their training and the location of the incident.

Volunteer Fire Department staff east of Winnipeg may not be trained and equipped to perform confined entry type rescue work. However, confined entry type rescue stretchers (Reeves Sleeve and backboard) are stored at the Intake, Hadashville, and Ross so they are available for use by first responders.

Winnipeg Fire Paramedic Services (WFPS) may also be called to assist in confined entry rescue situations, but this will involve a long response time for locations far from Winnipeg. Some situations may call for fire department and/or ambulance staff to be transported on the GWWD Railway to a location with no road access.

An injured/disabled person within the SLA will be transported by stretcher along the pipe to a selected exit manhole, or boathouse. Removal of the injured person at a manhole may be accomplished using a rescue winch mounted on top of the manhole.

Manhole opening sizes are 27 inches in diameter from the Intake to Mile 17 and 16 inch in diameter from Mile 17 to St. Boniface Station. The smaller 16-inch manholes present a significant challenge for removing larger people from the SLA.

Road Meeting Locations, Manhole and Boathouse GPS Coordinates are found at the end of this plan.



Rescue Equipment List for Worksite/Support Vehicle

Uni-hoist or Tripod and Tuff-Built "Wincher"
Collapsible stretcher
Flashlight(s)
Air quality testing equipment
Reeves Sleeve
Backboard

3. Scope of the MERP

The Shoal Lake Aqueduct (SLA) and Railway Property Corridor is a 150 kilometre long water pipe and railway corridor between Winnipeg and the SLA Intake Facility at Waugh, Manitoba. Waugh is located on Shoal Lake's Indian Bay which is the source of the City of Winnipeg water supply. Waugh is approximately five kilometres west of the Manitoba and Ontario provincial boundary.

The western limit of the SLA property corridor is at the Greater Winnipeg Water District (GWWD) St. Boniface Railway Station at 598 Plinguet Street in the Winnipeg Suburb of St. Boniface. The SLA property corridor crosses the City of Winnipeg, Springfield, Tache and Reynolds Municipalities.

Although the SLA property corridor is served by different police, fire and medical emergency services organizations, response to an emergency will be initiated by dialling **911**. Winnipeg EMS will respond to medical calls up to the Perimeter Highway and the Water Treatment Plant. The Medical Transportation Coordination Centre (MTCC) EMS will respond to medical emergencies east of the Perimeter Highway. Medical emergencies include; but are not limited to:

- Surface worksite accident injures or sickness involving rail, aqueduct crews or contractors requiring conveyance to hospital.
- Injured and immobilized personnel working in the SLA pipe requiring pipe evacuation by trained fire fighters and conveyance to hospital.
- Evacuation of seriously injured or sick personnel by air ambulance from the SLA Right of Way.
- Evacuation of seriously injured or sick personnel by air ambulance from the Intake Facility

As an injured or sick person may be a distance from a road for ambulance pick up and conveyance to a hospital, the SLA Property Corridor Medical Emergency Response Plan (MERP) identifies Road Meeting Locations. Meeting Locations are located at all weather roads and GWWD Railway road crossings. Road Meeting Locations ensures that there is a quick response to an emergency situation and reduces the possibility of confusion in responding to incident locations.



The MERP identifies the Road Meeting Locations by GPS Coordinates, SLA Mile and map location. Each railway crossing sign along the SLA property corridor has a mile marker identifying the SLA Mile point and road name.

The only exception to using a Road Meeting Location for an ambulance meet is if a seriously injured party must be air lifted to hospital. This includes the Intake Facility which has a Federal Department of Transport (DOT) approved heliport. SLA Manhole and Boathouse GPS Coordinates are listed below.

The MERP relies on the field personnel, who are in the vicinity of the injured party to obtain information from the field such as assistance required, location of incident, type of injury, at which Road Meeting Location will the ambulance meet the injured party and to relay that information to the 911 Operator.

From information received from the field, the 911 Operator will assess the incident and provide emergency response resources for the evacuation of the injured party and appropriate conveyance to hospital.

Once field personnel have advised the 911 Operator of the incident and the emergency response has been initiated, they must immediately advise the Deacon Control Centre Operator of the incident and, if required, request additional resources. The Deacon Control Centre Operator must immediately contact and inform the Senior Operator and Operator-in-Charge (OIC) of the medical emergency. Information in **WTP ERP CP01 – Serious Injury or Death** must also be reviewed and acted on.



GPS Coordinates - Road Meeting Locations

SLA Mile	Road Location at GWWD Track	GPS Coordinates	
		Latitude	Longitude
5.0	St.Boniface Station (598 Plinguet)	49.89297	-97.09995
6.9	Lagimodiere Blvd	49.88287	-97.07237
8.9	Plessis Road	49.87120	-97.02680
10.0	Symington Road	49.86533	-97.00407
12.2	PTH 101	49.85462	-96.95892
13.3	Highway 207 (WDWTP)	49.8492998	-96.9353817
15.3	Heatherdale Road	49.849118	-96.889439
16.3	Vernon Road	49.8481573	-968667739
17.3	Highway 206	49.8481257	-96.8438265
19.3	Willowdale Road	49.8480185	-96.7985572
20.3	Meadowdale Road	49.8479343	-96.775196
21.3	Poplar Road	49.8477726	-96.752502
22.4	Edgewood Road	49.8462075	-96.7292834
23.5	Millbrook Road	49.84463	-96,7064389
24.5	Brier Cliff Road	49.8430206	-96.6836708
25.5	Stone Cliff Road	49.8428486	-96.6608977
26.2	Centre Line Road	49.8407467	-96.6448935
26.6	PTH 12	49.8394184	-96.6377649
29.8	Monominto Road (Road 39E)	49.8026472	-96.4798653
30.3	Uppingham Road (Road 56N)	49.8256071	-96.4798653
31.2	Pioneer Road (Road 40E)	49.8166403	-96.5484709
34.4	Provincial Highway PR 302	49.8026472	-96.4798653
36.2	Mattern Road (Road 53N)	49.7811218	-96.4539233
56.7	Spruce Siding Road	49.7244255	-96.0433934
63.7	PTH 11	49.677577	-95.9004236
64.1	Whitemouth River Road	49.6753245	-95.8978768
67.3	Trans-Canada Highway (West)	49.6494278	-95.8382126
67.4	Trans-Canada Highway (East)	49.6501431	-95.8401994
69.5	McKinley Road	49.6400162	-95.7933467
73.6	McMunn Road	49.6306304	-95.7026532
77.7	Highway PR 308 (East Braintree)	49.6196792	-95.6240159
80.3	Wye Road	49.6250111	-95.5662519
82.44	Municipal Road 85E	49.6311647	-95.5207142

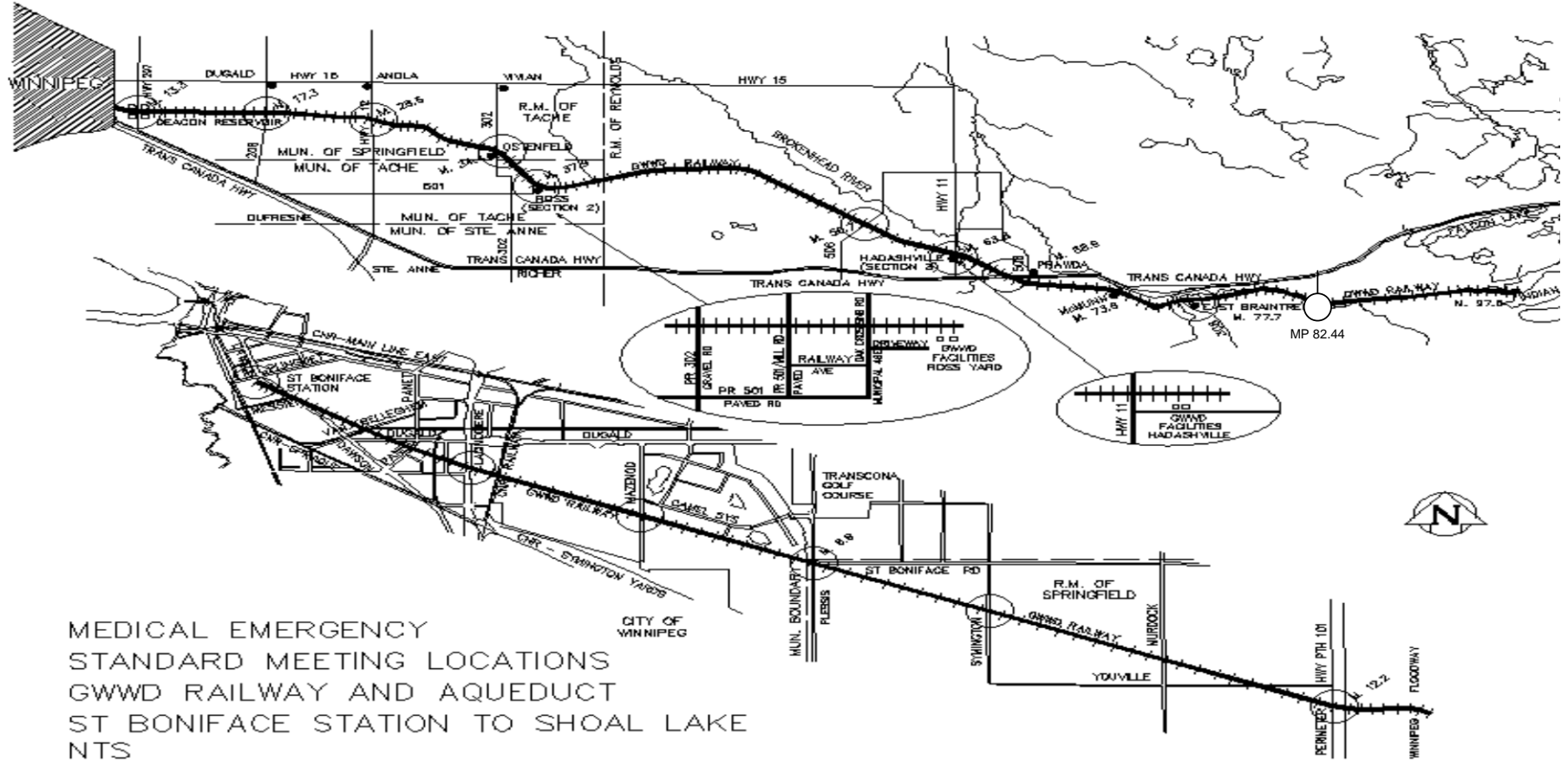


**GPS Coordinates - Emergency Response by Air Ambulance SLA Manholes,
 Boathouses, Section Facilities and Intake Facility**

Feature	SLA Mile at Track	GPS Coordinates	
		Latitude	Longitude
Manhole	14.30	49.8491534	-96.9133102
Manhole	15.30	49.849118	-96.889439
Manhole	16.30	49.8481573	-96.8667739
Mile 17 Boathouse	17.00	49.8481393	-96.8508887
Manhole	18.22	49.8481231	-96.8246755
Manhole	19.40	49.8480185	-96.7985572
Manhole	20.45	49.8479343	-96.775196
Manhole	21.46	49.8477726	-96.752502
Manhole	22.15	49.8467424	-96.737031
Manhole	23.37	49.8448505	-96.7100597
Manhole	24.40	49.8432775	-96.687308
Manhole	25.28	49.8427908	-96.6672772
Manhole	26.32	49.8407467	-96.6448935
Manhole	27.46	49.8358944	-96.620181
Manhole	28.73	49.83312	-96.5926312
Manhole	29.92	49.8292059	-96.5674351
Manhole	31.16	49.8166403	-96.5484709
Manhole	32.27	49.8114052	-96.524844
Manhole	33.26	49.8079909	-96.5034737
Manhole	34.24	49.8035561	-96.4828161
Manhole	35.18	49.7940873	-96.468865
Manhole	36.22	49.7811218	-96.4539233
Manhole	37.22	49.7704197	-96.4416614
Manhole	38.35	49.7600853	-96.4226271
Ross Section Facilities	38.90	49.7595024	-96.4084459
Mile 39 Boathouse	39.40	49.7589668	-96.39926
Mile 42 Boathouse	42.00	49.7691829	-96.3420804
Manhole	42.71	49.7716344	-96.3278871
Manhole	43.56	49.7747911	-96.3095862
Manhole	44.48	49.7776054	-96.2895537
Manhole	45.40	49.7793072	-96.2691711
Manhole	46.34	49.7803225	-96.2484092
Manhole	47.23	49.7807569	-96.2283782
Manhole	49.24	49.781137	-96.1833589

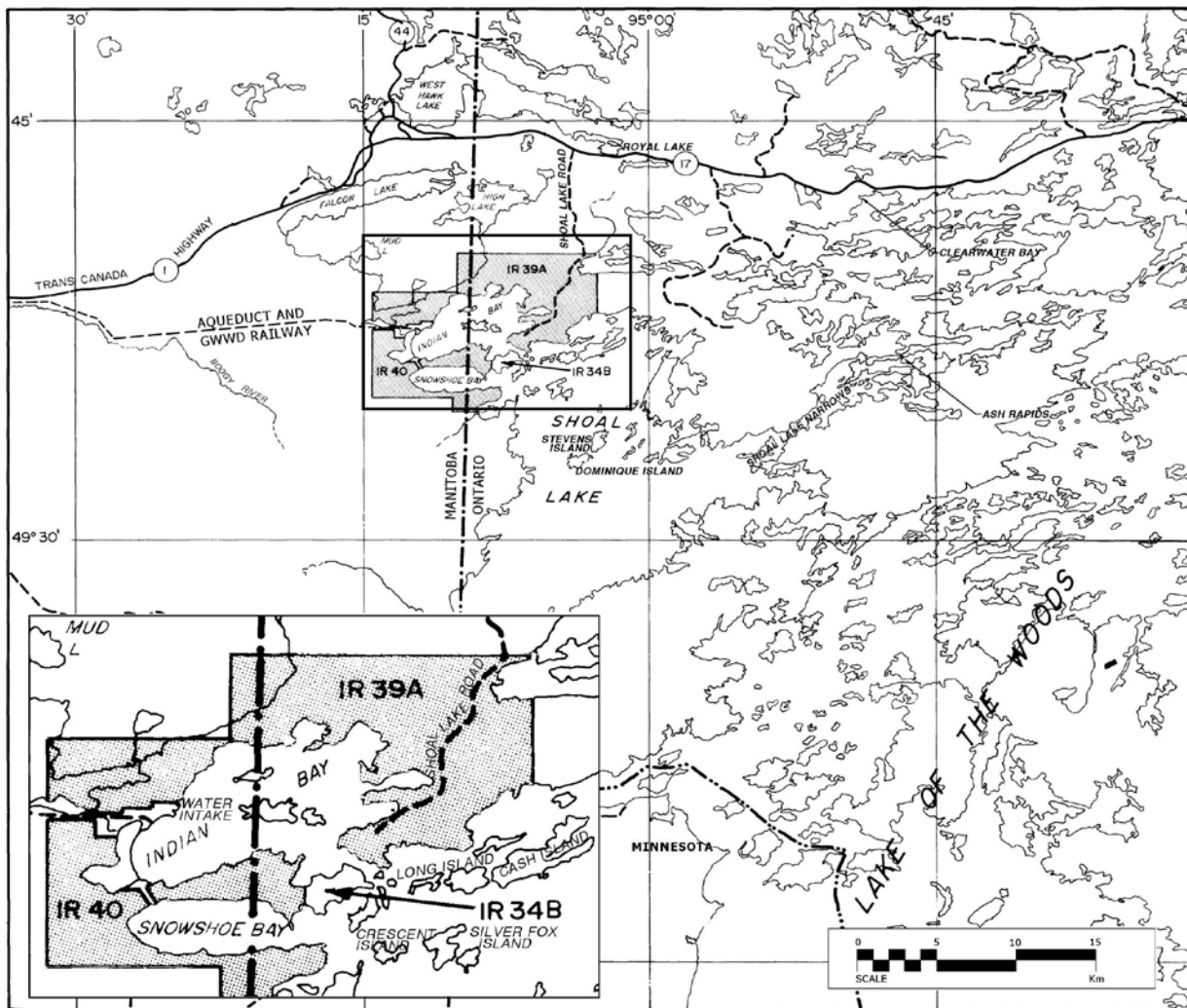


Feature	SLA Mile at Track	GPS Coordinates	
		Latitude	Longitude
Manhole	51.33	49.7695836	-96.1414626
Manhole	53.21	49.7538402	-96.10699
Manhole	54.12	49.7463109	-96.0904448
Manhole	56.69	49.7248787	-96.0435648
Manhole	61.23	49.6903546	-95.958112
Manhole	62.29	49.6848878	-95.9357501
Manhole	63.13	49.6807579	-95.9187857
Hadashville Section Facilities	63.90	49.676815	-95.9038384
Manhole	66.38	49.6565571	-95.8568799
Manhole	67.41	49.649563	-95.8375649
Mile 74 Boathouse (West)	73.60	49.6310025	-95.7028344
Mile 74 Boathouse (East)	73.70	49.6307306	-95.7015758
Manhole	76.90	49.6160451	-95.6408187
Mile 77 Boathouse (West)	77.00	49.6198247	-95.6259149
Mile 77 Boathouse (East)	77.70	49.6199023	-95.6249183
Manhole	78.70	49.6214687	-95.6023954
Manhole	80.87	49.6272474	-95.5548265
Mile 82 Boathouse (West)	82.00	49.6310394	-95.528836
Mile 82 Boathouse (East)	82.10	49.6311296	-95.5282244
Manhole	84.08	49.624655	-95.4860734
Manhole	84.89	49.61995	-95.46998
Manhole	85.61	49.6130749	-95.4583038
Manhole	86.58	49.6140893	-95.4367804
Manhole	87.28	49.6150329	-95.4212897
Manhole	87.54	49.615307	-95.4173715
Manhole	88.64	49.6168781	-95.3912716
Manhole	89.58	49.6181964	-95.3702682
Manhole	90.66	49.6196587	-95.3463884
Manhole	91.69	49.6210399	-95.3236895
Manhole	92.61	49.6231722	-95.3032145
Manhole	93.69	49.6256509	-95.2796542
Manhole	94.72	49.6260046	-95.2568038
Manhole	95.70	49.6254161	-95.2356021
Mile 97 Boathouse	96.77	49.6228345	-95.2135738
Intake Facility Heliport	97.50	49.6238655	-95.1967076



MEDICAL EMERGENCY
 STANDARD MEETING LOCATIONS
 GWRD RAILWAY AND AQUEDUCT
 ST BONIFACE STATION TO SHOAL LAKE
 NTS

R:\DRAWINGS\MAPS\MISC\SITE_MAP\RESPON-1 10/06/00



Intake Facility Site – Waugh, Manitoba