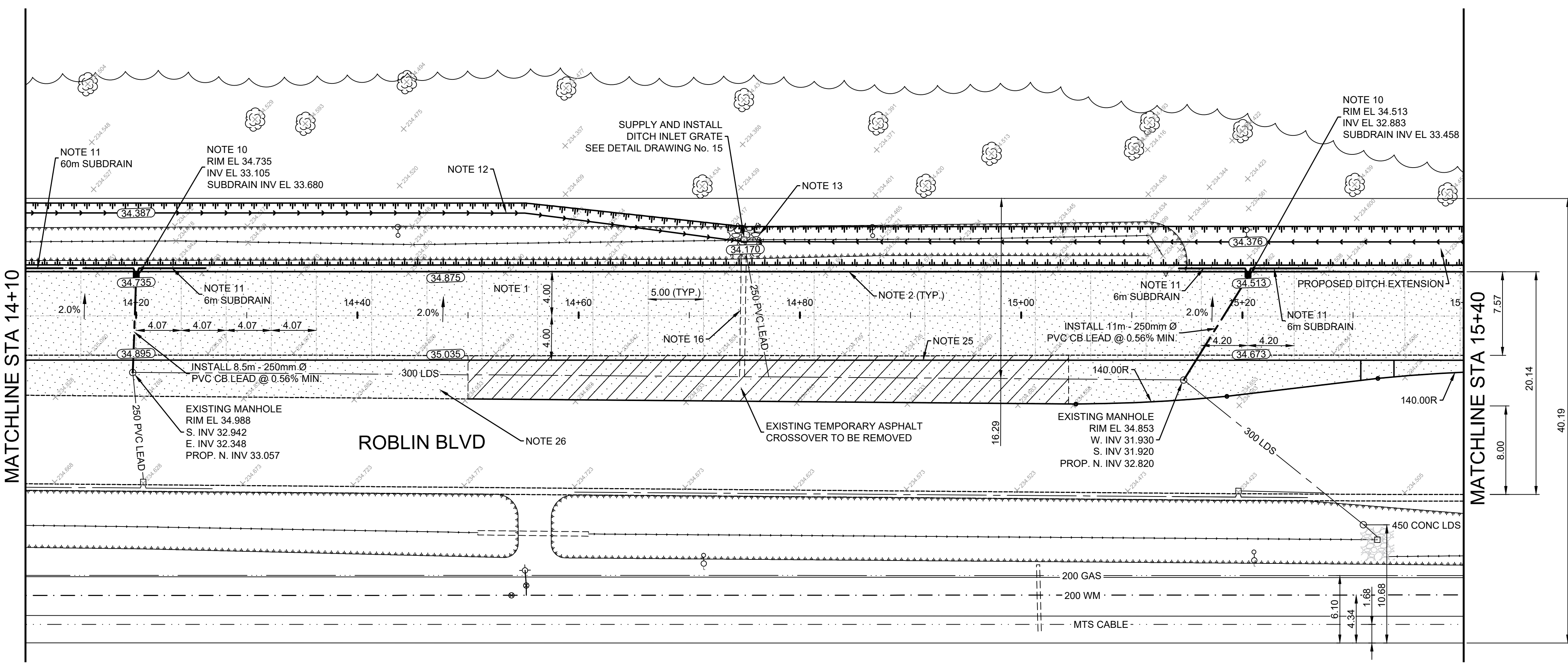


- CONSTRUCTION NOTES**
- REMOVE EXISTING PAVEMENT AND CONSTRUCT NEW 230mm CONCRETE PAVEMENT (PLAIN DOWELLED)
  - CONSTRUCT SEPARATE CONCRETE SPLASH STRIP (SD-223B) SEE DETAIL DRAWING No. 14
  - CONSTRUCT 230mm CONCRETE PAVEMENT WIDENING AND SAFETY CURB (SD-206B) SEE DETAIL DRAWING No. 15
  - CONSTRUCT NEW INTEGRAL CURB RAMP
  - RENEW EXISTING CONCRETE SIDEWALK
  - INSTALL NEW DETECTABLE WARNING SURFACE TILE
  - CONSTRUCT MONOLITHIC CONCRETE SPLASH STRIP (SD-223A)
  - PLANE EXISTING ASPHALT AND CONSTRUCT NEW ASPHALTIC PAVEMENT OVERLAY TYPE 1A
  - RELOCATE TRAFFIC SIGNAL (BY OTHERS)
  - INSTALL NEW CURB AND GUTTER INLET C/W CATCHBASIN (SD-024 - 1800) AND CONNECT PVC CB LEAD TO EXISTING MANHOLE
  - INSTALL NEW 150mm Ø SUBDRAIN (SD-245)
  - RE-GRADE EXISTING DITCH
  - INSTALL GROUTED STONE RIP RAP (SEE DETAIL DRAWING No. 15)
  - RENEW EXISTING ASPHALT PATHWAY
  - REMOVE EXISTING PAVEMENT AND CONSTRUCT NEW ASPHALT PAVEMENT
  - REMOVE EXISTING CULVERT
  - INSTALL NEW CULVERT
  - CONSTRUCT SAFETY MEDIAN (SD-226B)
  - REMOVE EXISTING CONCRETE SIDEWALK AND REGRADE EXISTING BOULEVARD
  - REMOVE EXISTING CURB RAMP AND CONSTRUCT NEW BARRIER CURB (180mm HT. REVEAL)
  - CONSTRUCT NEW MONOLITHIC CURB RAMP
  - CONSTRUCT NEW CONCRETE SIDEWALK
  - ABANDON EXISTING DRAINAGE INLET
  - ABANDON EXISTING CATCH BASIN AS PER CW 2130
  - CONSTRUCT NEW SEPARATE BARRIER CURB (180mm HT. REVEAL)
  - CONSTRUCT CONCRETE MEDIAN SLAB (SD-227A)
  - REMOVE EXISTING PAVEMENT AND CONSTRUCT NEW 200mm CONCRETE PAVEMENT (REINFORCED)
  - CONSTRUCT NEW INTEGRAL MODIFIED BARRIER CURB (SD-203B)
  - CONSTRUCT 200mm CONCRETE PAVEMENT (REINFORCED) FOR OUTFRONT MEDIA BUS SHELTER PAD
  - RENEW EXISTING CURB AND GUTTER (SD-200)



- GENERAL NOTES**
- PAVEMENT DIMENSIONS ARE TO BACK OF CURB
  - ALL CURB RADII UNDER 15.0m SHALL BE MODIFIED
  - ADD 200.00mm TO ALL DESIGN ELEVATION TO OBTAIN GEODETIC ELEVATIONS
  - CURB REPLACEMENT AS DIRECTED BY CONTRACT ADMINISTRATOR
  - CONTRACTOR TO CONFIRM THE LOCATION OF ALL UTILITIES/SERVICES IN THE FIELD PRIOR TO CONSTRUCTION
  - ADJUST ALL EXISTING WATER VALVES AND CURB STOPS TO GRADE

**PRELIMINARY**  
NOT TO BE USED FOR CONSTRUCTION

**METRIC**  
WHOLE NUMBERS INDICATE MILLIMETERS  
DECIMALIZED NUMBERS INDICATE METERS

TENDER NO. 4-2019

EXISTING	LEGEND - PLAN	PROPOSED	EXISTING	LEGEND - PLAN	PROPOSED	EXISTING	LEGEND - PLAN	PROPOSED
⊕	HYDRANT	⊕	---	LDS/WWS	---	▒	CONCRETE	▒
⊗	VALVE	⊗	---	WATERMAIN	---	▒	CONCRETE SIDEWALK	▒
○	CURB STOP	○	---	GAS	---	▒	ASPHALT	▒
⊙	MANHOLE	⊙	---	TRAFFIC SIGNALS	---	▒	DITCH FLOW	▒
□	CATCH BASIN	□	---	HYDRO/STREET LIGHT	---	▒	DITCH - TOP OF SLOPE	▒
△	CURB INLET	△	---	MTS	---	▒	CULVERT	▒
○	HYDRO POLE	○	---	CURB RENEWAL	---	▒	LDS FLOW DIRECTION	▒
○	LIGHT STANDARD	○	---	PROPERTY LINE	---	▒	EDGE OF PAVEMENT	▒
○	TRAFFIC SIGNAL POLE	○	---	RAMP CURB	---	▒	ASPHALT CROSSOVER	▒
⊕	SURVEY BAR	⊕	---	ELEVATIONS	(31.000)			
⊕	GEODETIC BENCH MARK	⊕	---	TREELINE	---			

**LOCATION APPROVED**  
UNDERGROUND STRUCTURES

DATE: \_\_\_\_\_

NOTE:  
LOCATION OF UNDERGROUND STRUCTURES AS SHOWN ARE BASED ON THE BEST INFORMATION AVAILABLE BUT NO GUARANTEE IS GIVEN THAT ALL EXISTING UTILITIES ARE SHOWN OR THAT THE GIVEN LOCATIONS ARE EXACT. CONFIRMATION OF EXISTENCE AND EXACT LOCATION OF ALL SERVICES MUST BE OBTAINED FROM THE INDIVIDUAL UTILITIES BEFORE PROCEEDING WITH CONSTRUCTION.

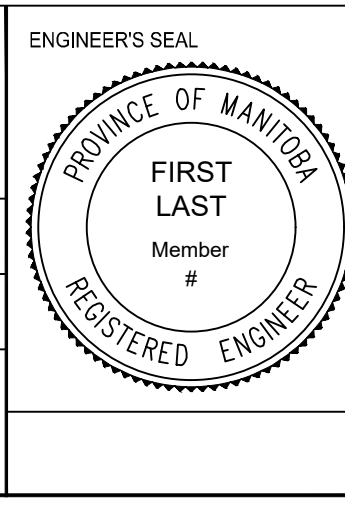
**ENGINEERING DIVISION**  
TECHNOLOGY SERVICES BRANCH  
106 - 1155 PACIFIC AVE

DESIGNED BY: R.W.  
CHECKED BY: R.W. / A.M.C.

DRAWN BY: J.D.  
APPROVED BY:

HOR. SCALE: 1 : 250  
VERTICAL: 1 : 10

DATE: 18/03/2019



**THE CITY OF WINNIPEG**  
PUBLIC WORKS DEPARTMENT

**ROBLIN BOULEVARD WESTBOUND**  
FROM ASSINBOINE PARK DRIVE TO SHAFTSBURY BOULEVARD  
CONCRETE RECONSTRUCTION AND ASSOCIATED WORKS  
FROM STA. 14+10 TO STA. 15+40

CITY DRAWING NUMBER: P-3504-11  
SHEET 11 OF 28

11