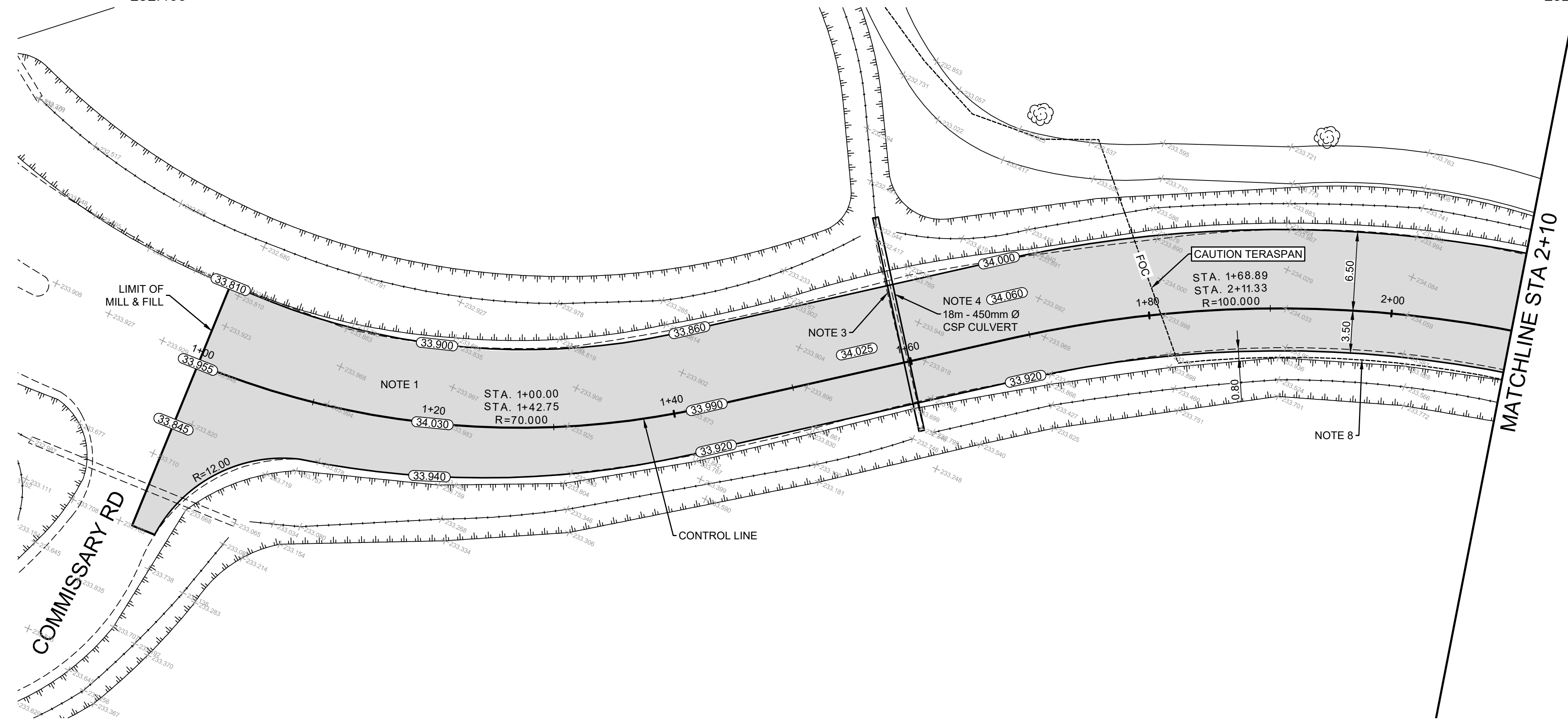


ASSINIBOINE PARK DRIVE - MILL & FILL CROSS SECTION (TYPICAL)



- CONSTRUCTION NOTES**
- MILL EXISTING ASPHALT AND CONSTRUCT NEW ASPHALTIC PAVEMENT OVERLAY
 - REMOVE EXISTING PAVEMENT AND CONSTRUCT NEW 100mm ASPHALT PAVEMENT
 - REMOVE EXISTING CULVERT
 - INSTALL NEW CULVERT
 - RENEW EXISTING ASPHALT PATHWAY
 - CONSTRUCT NEW 120mm MOUNTABLE CURB AND GUTTER (SD-200 & SD-201)
 - RE-GRADE EXISTING DITCH AS REQUIRED
 - RELOCATE TERASPAN CONDUIT AS REQUIRED
- GENERAL NOTES**
- PAVEMENT DIMENSIONS ARE TO EDGE OF ASPHALT
 - ALL CURB RADII UNDER 15.0m SHALL BE MODIFIED
 - ADD 200.00mm TO ALL DESIGN ELEVATION TO OBTAIN GEODETIC ELEVATIONS
 - CURB REPLACEMENT AS DIRECTED BY CONTRACT ADMINISTRATOR
 - CONTRACTOR TO CONFIRM THE LOCATION OF ALL UTILITIES/SERVICES IN THE FIELD PRIOR TO CONSTRUCTION

PRELIMINARY
NOT TO BE USED FOR CONSTRUCTION

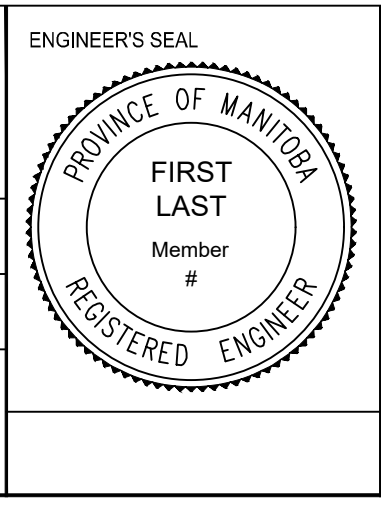
METRIC
WHOLE NUMBERS INDICATE MILLIMETERS
DECIMALIZED NUMBERS INDICATE METERS

TENDER NO. 4-2019

EXISTING	LEGEND - PLAN	PROPOSED	EXISTING	LEGEND - PLAN	PROPOSED	EXISTING	LEGEND - PLAN	PROPOSED
⊕	HYDRANT	◆	---	LDS/NWS	---	▨	CONCRETE	▨
⊗	VALVE	●	---	WATERMAIN	---	▨	CONCRETE SIDEWALK	▨
○	CURB STOP	●	---	GAS	---	▨	ASPHALT	▨
⊙	MANHOLE	●	---	TRAFFIC SIGNALS	---	▨	DITCH FLOW	▨
⊚	CATCH BASIN	●	---	HYDRO/STREET LIGHT	---	▨	DITCH - TOP OF SLOPE	▨
△	CURB INLET	▲	---	MTS	---	▨	CULVERT	▨
⊙	HYDRO POLE	●	---	CURB RENEWAL	---	▨	LDS FLOW DIRECTION	▨
⊙	LIGHT STANDARD	●	---	PROPERTY LINE	---	▨	EDGE OF PAVEMENT	▨
⊙	TRAFFIC SIGNAL POLE	●	---	RAMP CURB	---	▨	ASPHALT CROSSOVER	▨
⊙	SURVEY BAR	●	---	ELEVATIONS	(31.000)	---		
⊙	GEODETIC BENCH MARK	●	---	TREELINE	---	---		

NO.	REVISIONS	DATE	BY
2.	ISSUE FOR TENDER	18/03/19	R.W.
1.	SUBMIT FOR PLAN APPROVAL	08/03/19	R.W.

ENGINEERING DIVISION TECHNOLOGY SERVICES BRANCH 106 - 1155 PACIFIC AVE	
DESIGNED BY: J.D.	CHECKED BY: R.W. / A.M.C.
DRAWN BY: J.D.	APPROVED BY:
HOR. SCALE: 1 : 250	VERTICAL: 1 : 10
DATE: 18/03/2019	



THE CITY OF WINNIPEG
PUBLIC WORKS DEPARTMENT

ASSINIBOINE PARK DRIVE
FROM COMMISSARY ROAD TO ZOO DRIVE
MILL & FILL, ASPHALT RECONSTRUCTION AND ASSOCIATED WORKS
FROM STA. 1+00 TO STA. 2+10

CITY DRAWING NUMBER: P-3504-20
SHEET 20 OF 28

1