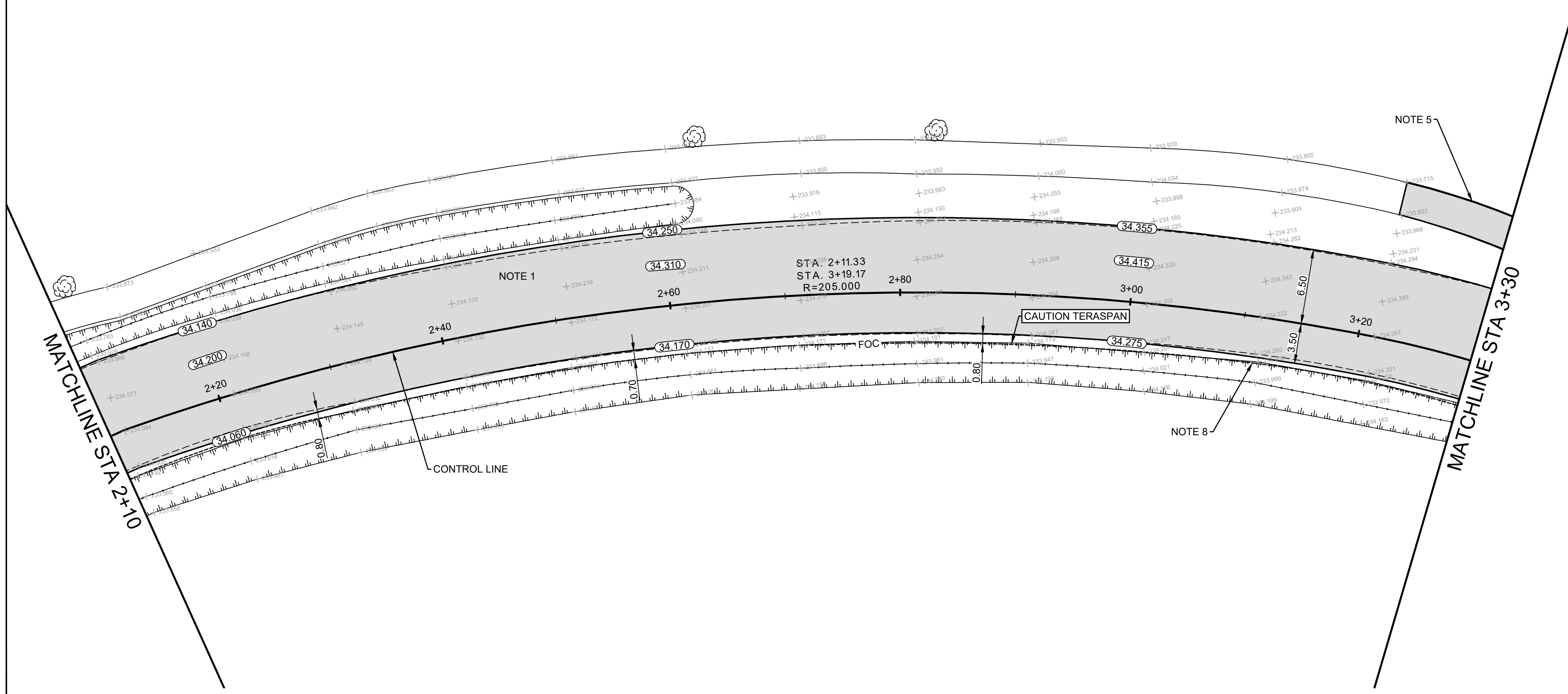


ASSINIBOINE PARK DRIVE - MILL & FILL CROSS SECTION (TYPICAL)



- CONSTRUCTION NOTES**
- MILL EXISTING ASPHALT AND CONSTRUCT NEW ASPHALTIC PAVEMENT OVERLAY
 - REMOVE EXISTING PAVEMENT AND CONSTRUCT NEW 100mm ASPHALT PAVEMENT
 - REMOVE EXISTING CULVERT
 - INSTALL NEW CULVERT
 - RENEW EXISTING ASPHALT PATHWAY
 - CONSTRUCT NEW 120mm MOUNTABLE CURB AND GUTTER (SD-200 & SD-201)
 - RE-GRADE EXISTING DITCH AS REQUIRED
 - RELOCATE TERASPAN CONDUIT AS REQUIRED
- GENERAL NOTES**
- PAVEMENT DIMENSIONS ARE TO EDGE OF ASPHALT
 - ALL CURB RADII UNDER 15.0m SHALL BE MODIFIED
 - ADD 200.00mm TO ALL DESIGN ELEVATION TO OBTAIN GEODETIC ELEVATIONS
 - CURB REPLACEMENT AS DIRECTED BY CONTRACT ADMINISTRATOR
 - CONTRACTOR TO CONFIRM THE LOCATION OF ALL UTILITIES/SERVICES IN THE FIELD PRIOR TO CONSTRUCTION

PRELIMINARY
NOT TO BE USED FOR CONSTRUCTION

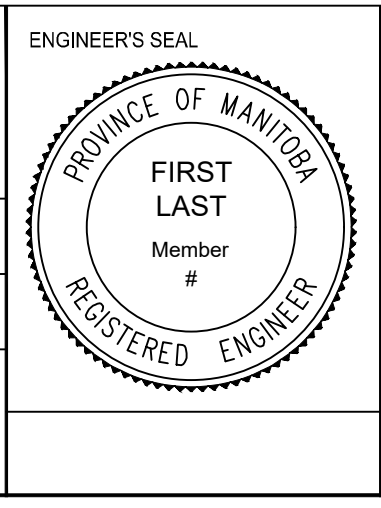
METRIC
WHOLE NUMBERS INDICATE MILLIMETERS
DECIMALIZED NUMBERS INDICATE METERS

TENDER NO. 4-2019

⊕	HYDRANT	◆	---	LDS/NWS	---	---	CONCRETE	---	LOCATION APPROVED	B.M. ELEV.
⊗	VALVE	●	---	WATERMAIN	---	---	CONCRETE SIDEWALK	---	UNDERGROUND STRUCTURES	
○	CURB STOP	●	---	GAS	---	---	ASPHALT	---		
⊙	MANHOLE	●	---	TRAFFIC SIGNALS	---	---	DITCH FLOW	---		
□	CATCH BASIN	●	---	HYDRO/STREET LIGHT	---	---	DITCH - TOP OF SLOPE	---		
△	CURB INLET	▲	---	MTS	---	---	CULVERT	---		
⊙	HYDRO POLE	●	---	CURB RENEWAL	---	---	LDS FLOW DIRECTION	---		
⊙	LIGHT STANDARD	●	---	PROPERTY LINE	---	---	EDGE OF PAVEMENT	---		
⊙	TRAFFIC SIGNAL POLE	●	---	RAMP CURB	---	---	ASPHALT CROSSOVER	---		
⊕	SURVEY BAR	◆	---	ELEVATIONS	(31.000)	---		---		
⊕	GEODETIC BENCH MARK	◆	---	TREELINE	---	---		---		
---	EXISTING	---	---	EXISTING	---	---	---	---		
---	LEGEND - PLAN	---	---	LEGEND - PLAN	---	---	---	---		
---	PROPOSED	---	---	PROPOSED	---	---	---	---		

NOTE:
LOCATION OF UNDERGROUND STRUCTURES AS SHOWN ARE BASED ON THE BEST INFORMATION AVAILABLE BUT NO GUARANTEE IS GIVEN THAT ALL EXISTING UTILITIES ARE SHOWN OR THAT THE GIVEN LOCATIONS ARE EXACT. CONFIRMATION OF EXISTENCE AND EXACT LOCATION OF ALL SERVICES MUST BE OBTAINED FROM THE INDIVIDUAL UTILITIES BEFORE PROCEEDING WITH CONSTRUCTION.

ENGINEERING DIVISION TECHNOLOGY SERVICES BRANCH 106 - 1155 PACIFIC AVE			
DESIGNED BY	J.D.	CHECKED BY	R.W. / A.M.C.
DRAWN BY	J.D.	APPROVED BY	
2.	ISSUE FOR TENDER	18/03/19	R.W.
1.	SUBMIT FOR PLAN APPROVAL	08/03/19	R.W.
NO.	REVISIONS	DATE	BY
		18/03/2019	



THE CITY OF WINNIPEG
PUBLIC WORKS DEPARTMENT

ASSINIBOINE PARK DRIVE
FROM COMMISSARY ROAD TO ZOO DRIVE
MILL & FILL, ASPHALT RECONSTRUCTION AND ASSOCIATED WORKS
FROM STA. 2+10 TO STA. 3+30

CITY DRAWING NUMBER
P-3504-21
SHEET 21 OF 28

2