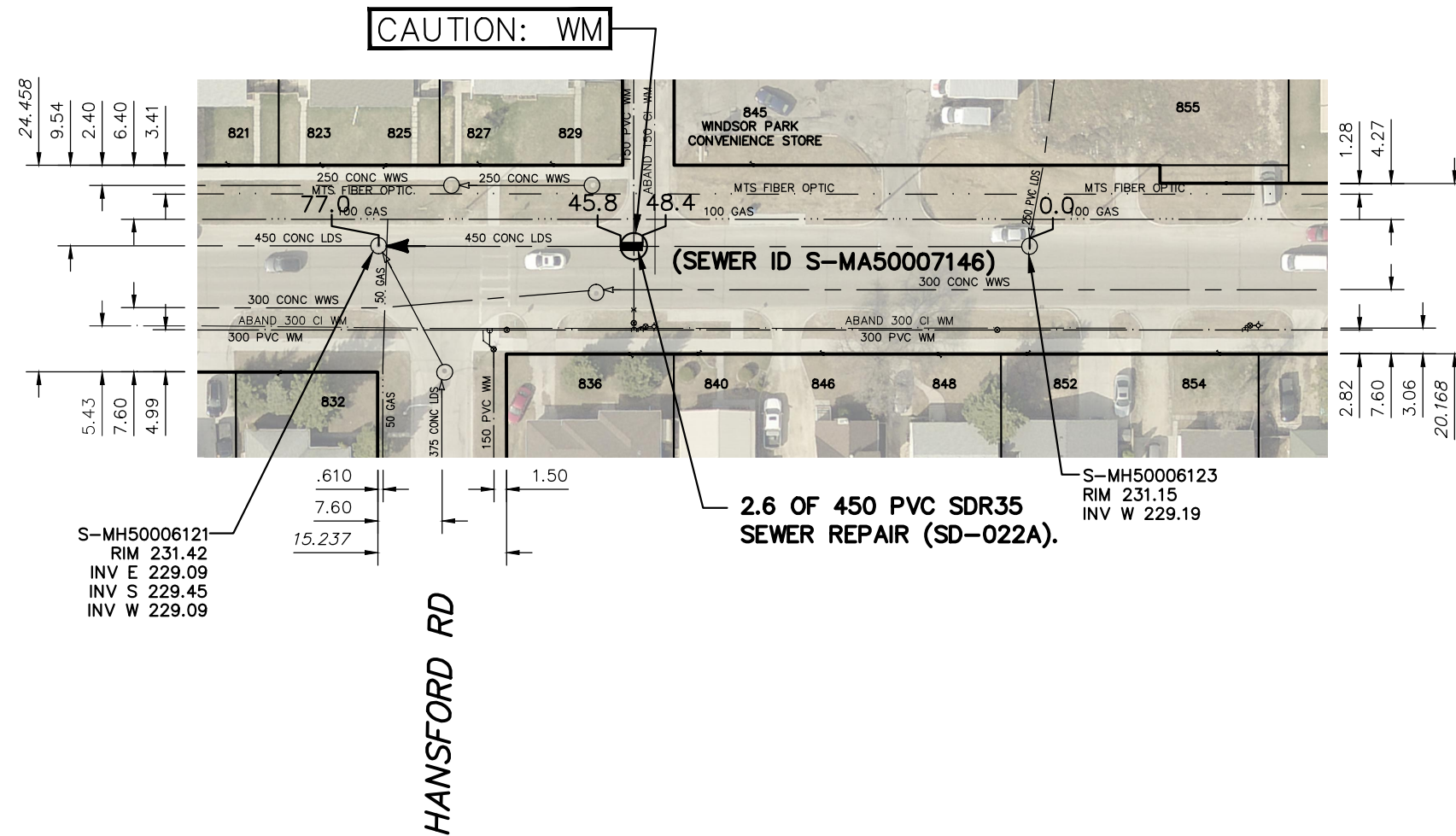




ELIZABETH ROAD



SEWER JUNCTION INFORMATION FROM SEWER VIDEO INSPECTION		
SEWER ID S-MA50007146		
DISTANCE FROM MH ID S-MH50006123		
DISTANCE	DIAMETER	CLOCK
3.5	150	2
21.4	100	2

WARNING

IF POWER EQUIPMENT OR EXPLOSIVES ARE TO BE USED FOR EXCAVATION ON THIS PROJECT THE CONTRACTOR MUST:

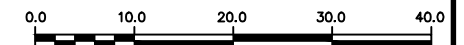
- 1) NOTIFY THE GAS COMPANY OF THE PROPOSED LOCATION OF EXCAVATION.
- 2) TAKE PRECAUTION TO AVOID DAMAGE TO GAS COMPANY INSTALLATIONS.

SEE PROVINCIAL REGULATION 210/72 FOR DETAILS

FOR INDEX SEE
12039

METRIC

WHOLE NUMBERS INDICATE MILLIMETRES
DECIMALIZED NUMBERS INDICATE METRES



LOCATION APPROVED UNDERGROUND STRUCTURES

SUPV. U/G STRUCTURES COMMITTEE _____ DATE _____

NOTE:

LOCATION OF UNDERGROUND STRUCTURES AS SHOWN ARE BASED ON THE BEST INFORMATION AVAILABLE BUT NO GUARANTEE IS GIVEN THAT ALL EXISTING UTILITIES ARE SHOWN OR THAT THE GIVEN LOCATIONS ARE EXACT. CONFIRMATION OF EXISTENCE AND EXACT LOCATION OF ALL SERVICES MUST BE OBTAINED FROM THE INDIVIDUAL UTILITIES BEFORE PROCEEDING WITH CONSTRUCTION.

B.M.
ELEV.

NO.	REVISIONS	DATE	BY

DESIGNED BY	MJK	CHECKED BY	SC
DRAWN BY	AJ	APPROVED BY	KZ
SCALE:	1:750	RELEASED FOR CONSTRUCTION	K.ZUREK
HORIZONTAL		DATE	
VERTICAL	DATE	2019-01-25	

ENGINEER'S SEAL
ORIGINAL SIGNED BY S.R.J. COURNOYER
19/01/24
CONSULTANT DRAWING NUMBER _____



THE CITY OF WINNIPEG

WATER AND WASTE DEPARTMENT
ENGINEERING DIVISION

2018 SEWER MAIN RENEWALS
BY EXTERNAL POINT REPAIR
ELIZABETH ROAD
1ST MH E OF HANSFORD ROAD TO
MH AT HANSFORD ROAD

SHEET **13** OF **24**
CITY DRAWING NUMBER
12050