

CONSTRUCTION NOTES

1. LIMIT OF ASPHALT OVERLAY
2. CONSTRUCT NEW ASPHALT OVERLAY
3. MILL EXISTING ASPHALT PAVEMENT
4. REMOVE EXISTING AND CONSTRUCT NEW 100mm CONCRETE SIDEWALK (SD-228A)
5. REMOVE EXISTING CONCRETE AND CONSTRUCT NEW 150mm REINFORCED CONCRETE APPROACH (SD-232)
6. REMOVE EXISTING LIP CURB AND CONSTRUCT NEW LIP CURB (SD-202A)
7. ADJUST MH, INSTALL NEW FRAME & SOLID COVER (AP-006, 007)
8. ADJUST MAHOLE/CATCH BASIN FRAME
9. REMOVE EXISTING CATCH PIT AND INSTALL NEW CATCH PIT WITH MOUNTABLE CURB FRAME (SD-023), AND CONNECT TO CATCH BASIN WITH 250mm PVC PIPE AS PER CW 2130

GENERAL NOTES

- A. PAVEMENT DIMENSIONS ARE TO BACK OF CURB
- B. ALL CURB RADII UNDER 15.0m SHALL BE MODIFIED
- C. CURB REPLACEMENT AS DIRECTED BY CONTRACT ADMINISTRATOR
- D. INSTALL DETECTABLE WARNING SURFACE TILES AT CURB RAMPS AS PER CW3326
- E. ASPHALT TIE-INS ON APPROACHES TO BE DETERMINED IN THE FIELD BY THE CONTRACT ADMINISTRATOR
- F. PAVEMENT REPAIRS SHOWN ARE ONLY A REPRESENTATIVE SAMPLE OF THE TENDER QUANTITIES

PRELIMINARY
NOT TO BE USED FOR
CONSTRUCTION

METRIC
WHOLE NUMBERS INDICATE MILLIMETERS
DECIMALIZED NUMBERS INDICATE METERS

TENDER NO. 452-2019

| EXISTING | LEGEND - PLAN | PROPOSED | EXISTING | LEGEND - PLAN | PROPOSED | EXISTING | LEGEND - PROFILE | PROPOSED |
|----------|---------------------|----------|----------|--------------------|----------|----------|-------------------|----------|
| ⊕ | HYDRANT | ◆ | --- | LDS/WWS | --- | ▒ | CONCRETE | ▒ |
| ⊗ | VALVE | ◆ | --- | WATERMAIN | --- | ▒ | CONCRETE SIDEWALK | ▒ |
| ○ | CURB STOP | ◆ | --- | GAS | --- | ▒ | ASPHALT | ▒ |
| ⊙ | MANHOLE | ● | --- | TRAFFIC SIGNALS | --- | ▒ | PARTIAL DEPTH | ▒ |
| □ | CATCH BASIN | ● | --- | HYDRO/STREET LIGHT | --- | ▒ | LEGEND - PLAN | ▒ |
| △ | CURB INLET | ▲ | --- | MTS/SHAW | --- | ▒ | PROPOSED | ▒ |
| ○ | HYDRO POLE | ● | --- | CURB RENEWAL | --- | ▒ | WEST GUTTER | ▒ |
| ○ | LIGHT STANDARD | ● | --- | PROPERTY LINE | --- | ▒ | CENTER LINE | ▒ |
| ○ | TRAFFIC SIGNAL POLE | ● | --- | RAMP CURB | --- | ▒ | EAST GUTTER | ▒ |
| + | SURVEY BAR | + | --- | ELEVATIONS | (31.000) | ▒ | WEST SIDEWALK | ▒ |
| ⊕ | GEODETIC BENCH MARK | + | --- | TREE | --- | ▒ | SOUTH SIDEWALK | ▒ |

LOCATION APPROVED
UNDERGROUND STRUCTURES

DATE: _____

NOTE:
LOCATION OF UNDERGROUND STRUCTURES AS SHOWN ARE BASED ON THE BEST INFORMATION AVAILABLE. BUT NO GUARANTEE IS GIVEN THAT ALL EXISTING UTILITIES ARE SHOWN OR THAT THE GIVEN LOCATIONS ARE EXACT. CONFIRMATION OF EXISTENCE AND EXACT LOCATION OF ALL SERVICES MUST BE OBTAINED FROM THE INDIVIDUAL UTILITIES BEFORE PROCEEDING WITH CONSTRUCTION.

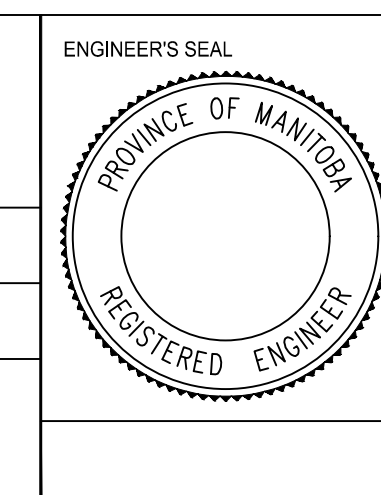
B.M. ELEV. GBM @ SW CORNER 117 MAPLETON DR 231.788

ENGINEERING DIVISION
TECHNOLOGY SERVICES BRANCH
106 - 1155 PACIFIC AVE

DESIGNED BY A.T. CHECKED BY G.K.
DRAWN BY A.T. APPROVED BY _____

HOR. SCALE: 1 : 250
VERTICAL: 1 : 10

DATE 2019/04/29



THE CITY OF WINNIPEG
PUBLIC WORKS DEPARTMENT

NEVILLE ST
FROM MAPLETON DR TO MARGATE RD
ASPHALT OVERLAY AND ASSOCIATED WORKS
FROM STA. 1+00 TO STA. 2+00

CITY DRAWING NUMBER SE-19-09
SHEET 14 OF 26
1