

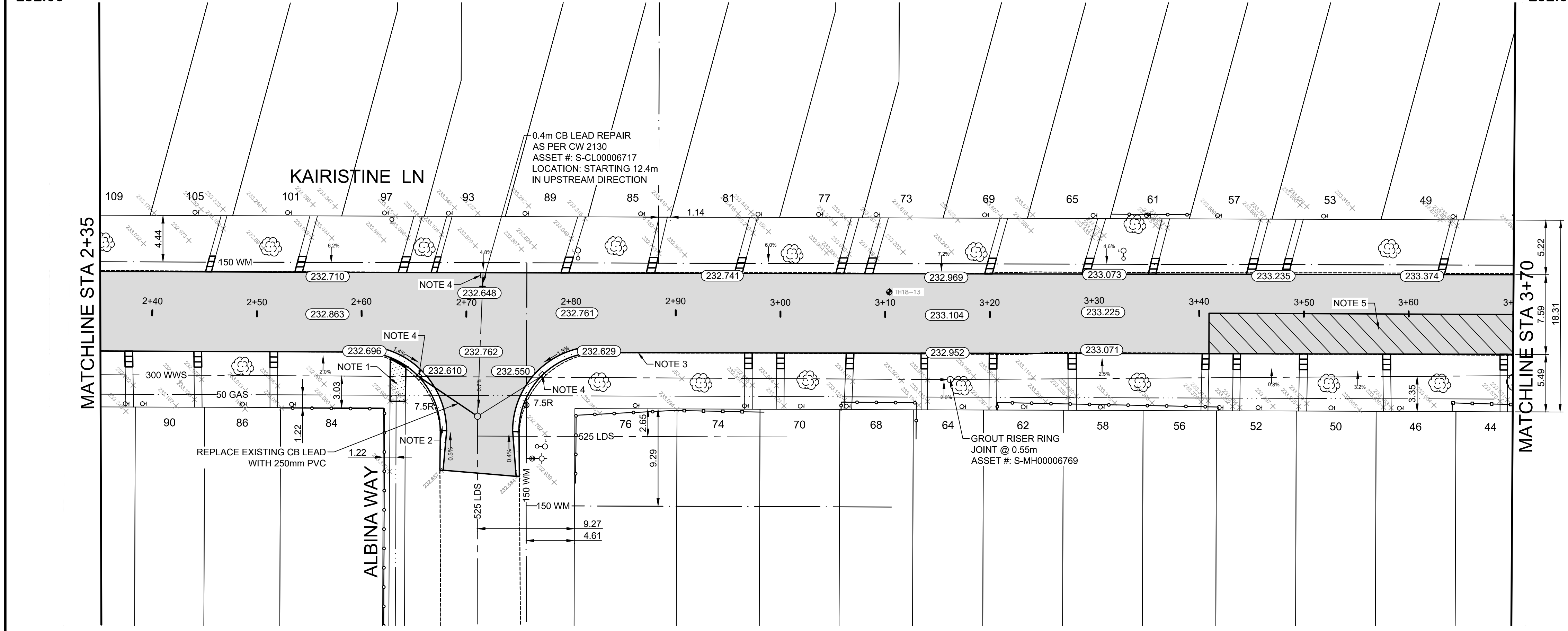
- CONSTRUCTION NOTES**
1. REMOVE AND CONSTRUCT NEW 100mm CONCRETE SIDEWALK (SD-228A)
 2. REMOVE EXISTING CURB AND CONSTRUCT NEW MODIFIED BARRIER CONCRETE CURB AND GUTTER (SD-200)
 3. CONSTRUCT NEW ASPHALT BARRIER CURB (E17)
 4. INSTALL NEW FRAME AND GRATED COVER (AP-006, AP-008)
 5. REMOVE EXISTING PAVEMENT AND CONSTRUCT NEW 100mm ASPHALT PAVEMENT
 6. LIMIT OF ASPHALT OVERLAY
 7. MILL EXISTING ASPHALT

- GENERAL NOTES**
- A. PAVEMENT DIMENSIONS ARE TO BACK OF CURB
 - B. ALL CURB RADII UNDER 15.0m SHALL BE MODIFIED
 - C. CURB REPLACEMENT AS DIRECTED BY CONTRACT ADMINISTRATOR
 - D. INSTALL DETECTABLE WARNING TILES AS DIRECTED BY CONTRACT ADMINISTRATOR (CW 3326)
 - E. APPLY CRACK SEALANT TO LONGITUDINAL CRACKS EXCEEDING 25mm IN WIDTH
 - F. MILL EXISTING CURB AS DIRECTED BY CONTRACT ADMINISTRATOR

PRELIMINARY
NOT TO BE USED FOR
CONSTRUCTION

METRIC
WHOLE NUMBERS INDICATE MILLIMETERS
DECIMALIZED NUMBERS INDICATE METERS

TENDER NO. 452-2019



⊕	HYDRANT	◆	---	LDS/WWS	---	---	CONCRETE	---	LOCATION APPROVED
⊗	VALVE	◆	---	WATERMAIN	---	---	CONCRETE SIDEWALK	---	UNDERGROUND STRUCTURES
○	CURB STOP	●	---	GAS	---	---	ASPHALT	---	
○	MANHOLE	●	---	HYDRO/STREET LIGHT	---	---	BRICK	---	
□	CATCH BASIN	●	---	MTS/SHAW	---	---	EXISTING	---	
△	CURB INLET	▲	---	CURB RENEWAL	---	---	LEGEND - PLAN	---	PROPOSED
○	HYDRO POLE	●	---	RAMP CURB	---	---	SOUTH / WEST GUTTER	---	
○	LIGHT STANDARD	●	---	ELEVATIONS	---	---	CENTER LINE	---	
○	TRAFFIC SIGNAL POLE	●	---	TREE	---	---	NORTH / EAST GUTTER	---	
⊕	SURVEY BAR	◆	---	WOOD FENCE	---	---		---	
⊕	GEODETIC BENCH MARK	◆	---	METAL FENCE	---	---		---	
---	EXISTING	---	---	LEGEND - PLAN	---	---	---	---	---
---	LEGEND - PLAN	---	---	LEGEND - PROFILE	---	---	---	---	---

LOCATION APPROVED
UNDERGROUND STRUCTURES

DATE

NOTE:
LOCATION OF UNDERGROUND STRUCTURES AS SHOWN ARE BASED ON THE BEST INFORMATION AVAILABLE BUT NO GUARANTEE IS GIVEN THAT ALL EXISTING UTILITIES ARE SHOWN OR THAT THE GIVEN LOCATIONS ARE EXACT. CONFIRMATION OF EXISTENCE AND EXACT LOCATION OF ALL SERVICES MUST BE OBTAINED FROM THE INDIVIDUAL UTILITIES BEFORE PROCEEDING WITH CONSTRUCTION.

B.M. ELEV. IB @ SE CORNER OF 98 DEXTER ST 233.773

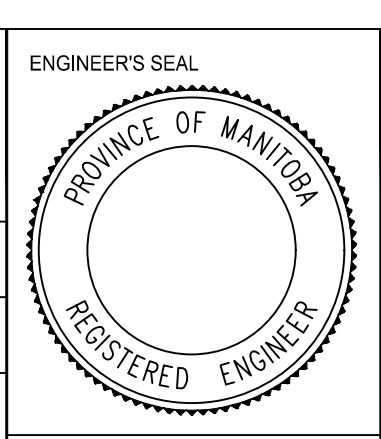
ENGINEERING DIVISION
TECHNOLOGY SERVICES BRANCH
106 - 1155 PACIFIC AVE

DESIGNED BY C.W. CHECKED BY E.H. & C.H.

DRAWN BY C.W. APPROVED BY

HOR. SCALE: 1 : 250
VERTICAL: 1 : 10

DATE 2019/05/17



THE CITY OF WINNIPEG
PUBLIC WORKS DEPARTMENT

KAIRISTINE LANE
FROM KINVER AVENUE TO DEXTER STREET
ASPHALT OVERLAY AND ASSOCIATED WORKS
FROM STA. 1+00 TO STA. 2+50

CITY DRAWING NUMBER SE-19-39
SHEET 12 OF 26

2