

- CONSTRUCTION NOTES**
1. REMOVE EXISTING AND CONSTRUCT NEW 100mm CONCRETE SIDEWALK (SD-228A)
 2. REMOVE EXISTING CURB AND CONSTRUCT NEW BARRIER CURB (SD-205)
 3. REMOVE EXISTING ASPHALT
 4. REMOVE EXISTING CONCRETE AND CONSTRUCT NEW 150mm REINFORCED CONCRETE APPROACH (SD-232)
 5. REMOVE & REPLACE EXISTING CONCRETE AND CONSTRUCT NEW 150mm REINFORCED CONCRETE (SD-232)
 6. INSTALL NEW FRAME AND GRATED COVER (AP-004, AP-006)
 7. INSTALL NEW FRAME AND SOLID COVER (AP-004, AP-007)
 8. REMOVE AND REPLACE NEW 1800 CATCH BASIN WITH CURB & GUTTER INLET (SD-024) CONNECT TO EXISTING COMBINED SEWER AS PER CW 2130
 9. CONSTRUCT NEW 100mm CONCRETE SIDEWALK (SD-228A)
 10. REPLACE EXISTING CB LEAD WITH NEW 250mm PVC
 11. REMOVE EXISTING CONCRETE SIDEWALK
 12. INSTALL NEW CURB AND GUTTER INLET FRAME (SD-023)
 13. INSTALL NEW CATCH PIT WITH CURB AND GUTTER INLET FRAME (SD-023)

- GENERAL NOTES**
- A. PAVEMENT DIMENSIONS ARE TO BACK OF CURB
 - B. ALL CURB RADII UNDER 15.0m SHALL BE MODIFIED
 - C. CURB REPLACEMENT AS DIRECTED BY CONTRACT ADMINISTRATOR
 - D. INSTALL DETECTABLE WARNING TILES AS DIRECTED BY CONTRACT ADMINISTRATOR (CW 3326)
 - E. PAVEMENT REPAIRS SHOWN ARE ONLY A REPRESENTATIVE SAMPLE OF THE TENDERED QUANTITIES
 - F. ASPHALT TIE-INS ON APPROACHES TO BE DETERMINED IN THE FIELD BY THE CONTRACT ADMINISTRATOR

PRELIMINARY
NOT TO BE USED FOR
CONSTRUCTION

METRIC
WHOLE NUMBERS INDICATE MILLIMETERS
DECIMALIZED NUMBERS INDICATE METERS

TENDER 452-2019

⊕	HYDRANT	◆	---	LDS/WWS	---	---	CONCRETE	---
⊗	VALVE	●	---	WATERMAIN	---	---	CONCRETE SIDEWALK	---
⊙	CURB STOP	●	---	GAS	---	---	ASPHALT	---
○	MANHOLE	●	---	TRAFFIC SIGNALS	---	---		---
□	CATCH BASIN	●	---	HYDRO/STREET LIGHT	---	EXISTING	LEGEND - PLAN	PROPOSED
△	CURB INLET	▲	---	MTS/SHAW	---	---	WEST GUTTER	---
○	HYDRO POLE	●	---	CURB RENEWAL	---	---	CENTER LINE	---
○	LIGHT STANDARD	●	---	PROPERTY LINE	---	---	EAST GUTTER	---
○	TRAFFIC SIGNAL POLE	●	---	RAMP CURB	---	---	WEST SIDEWALK	---
+	SURVEY BAR	+	---	ELEVATIONS	(231.000)	---	EAST SIDEWALK	---
⊕	GEODETIC BENCH MARK	⊕	---	TREE	---	---		---
---	EXISTING	---	---	LEGEND - PLAN	---	---	LEGEND - PROFILE	---
---	LEGEND - PLAN	---	---	PROPOSED	---	---	PROPOSED	---

1075

LOCATION APPROVED UNDERGROUND STRUCTURES

DATE

NOTE:
LOCATION OF UNDERGROUND STRUCTURES AS SHOWN ARE BASED ON THE BEST INFORMATION AVAILABLE. BUT NO GUARANTEE IS GIVEN THAT ALL EXISTING UTILITIES ARE SHOWN OR THAT THE GIVEN LOCATIONS ARE EXACT. CONFIRMATION OF EXISTENCE AND EXACT LOCATION OF ALL SERVICES MUST BE OBTAINED FROM THE INDIVIDUAL UTILITIES BEFORE PROCEEDING WITH CONSTRUCTION.

B.M. I.B. @ NE CORNER OF 402 HARTFORD AVE
ELEV. 231.479

NO.	REVISIONS	DATE	BY

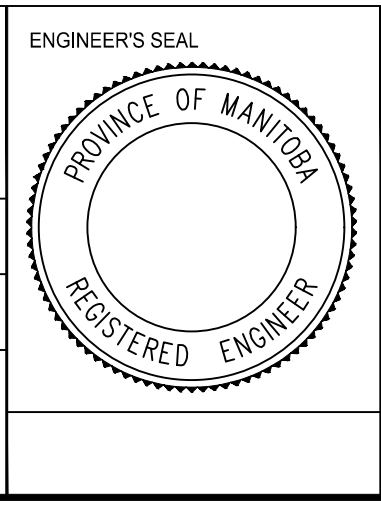
ENGINEERING DIVISION
TECHNOLOGY SERVICES BRANCH
106 - 1155 PACIFIC AVE

DESIGNED BY C.W.
CHECKED BY C.H.

DRAWN BY C.W. & T.K.
APPROVED BY

HOR. SCALE: 1 : 250
VERTICAL: 1 : 10

DATE 2019/05/17



THE CITY OF WINNIPEG
PUBLIC WORKS DEPARTMENT

ANDREWS STREET
FROM HARTFORD AVE TO LEILA AVE
ASPHALT OVERLAY AND ASSOCIATED WORKS
FROM STA. 6+40 TO STA. 7+60

CITY DRAWING NUMBER SE-19-49
SHEET 6 OF 26
6