

- CONSTRUCTION NOTES**
- REMOVE EXISTING AND CONSTRUCT NEW 100mm CONCRETE SIDEWALK (SD-228A)
  - REMOVE EXISTING CURB AND CONSTRUCT NEW BARRIER CURB (SD-205)
  - REMOVE EXISTING ASPHALT
  - REMOVE EXISTING CONCRETE AND CONSTRUCT NEW 150mm REINFORCED CONCRETE APPROACH (SD-232)
  - REMOVE & REPLACE EXISTING CONCRETE AND CONSTRUCT NEW 150mm REINFORCED CONCRETE (SD-232)
  - INSTALL NEW FRAME AND GRATED COVER (AP-004, AP-006)
  - INSTALL NEW FRAME AND SOLID COVER (AP-004, AP-007)
  - REMOVE AND REPLACE NEW 1800 CATCH BASIN WITH CURB & GUTTER INLET (SD-024) CONNECT TO EXISTING COMBINED SEWER AS PER CW 2130
  - CONSTRUCT NEW 100mm CONCRETE SIDEWALK (SD-228A)
  - REPLACE EXISTING CB LEAD WITH NEW 250mm PVC
  - REMOVE EXISTING CONCRETE SIDEWALK
  - INSTALL NEW CURB AND GUTTER INLET FRAME (SD-023)
  - INSTALL NEW CATCH PIT WITH CURB AND GUTTER INLET FRAME (SD-023)

- GENERAL NOTES**
- PAVEMENT DIMENSIONS ARE TO BACK OF CURB
  - ALL CURB RADII UNDER 15.0m SHALL BE MODIFIED
  - CURB REPLACEMENT AS DIRECTED BY CONTRACT ADMINISTRATOR
  - INSTALL DETECTABLE WARNING TILES AS DIRECTED BY CONTRACT ADMINISTRATOR (CW 3326)
  - PAVEMENT REPAIRS SHOWN ARE ONLY A REPRESENTATIVE SAMPLE OF THE TENDERED QUANTITIES
  - ASPHALT TIE-INS ON APPROACHES TO BE DETERMINED IN THE FIELD BY THE CONTRACT ADMINISTRATOR

**PRELIMINARY**  
NOT TO BE USED FOR  
CONSTRUCTION

**METRIC**  
WHOLE NUMBERS INDICATE MILLIMETERS  
DECIMALIZED NUMBERS INDICATE METERS

TENDER 452-2019

⊕	HYDRANT	◆	---	LDS/WWS	---	CONCRETE	---
⊗	VALVE	◆	---	WATERMAIN	---	CONCRETE SIDEWALK	---
⊙	CURB STOP	●	---	GAS	---	ASPHALT	---
○	MANHOLE	●	---	TRAFFIC SIGNALS	---		
□	CATCH BASIN	●	---	HYDRO/STREET LIGHT	---	EXISTING	LEGEND - PLAN
△	CURB INLET	▲	---	MTS/SHAW	---	PROPOSED	LEGEND - PROFILE
○	HYDRO POLE	●	---	CURB RENEWAL	---		
○	LIGHT STANDARD	●	---	PROPERTY LINE	---		
○	TRAFFIC SIGNAL POLE	●	---	RAMP CURB	---		
+	SURVEY BAR	+	---	ELEVATIONS	(231.000)		
⊕	GEODETIC BENCH MARK	⊕	---	TREE	---		
---	EXISTING	---	---	LEGEND - PLAN	---	---	---
---	LEGEND - PLAN	---	---	LEGEND - PROFILE	---	---	---

**LOCATION APPROVED**  
UNDERGROUND STRUCTURES

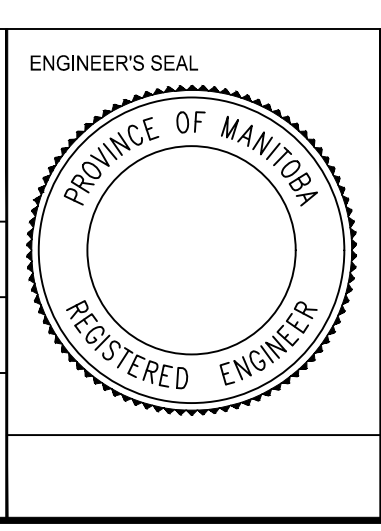
NO. REVISIONS      DATE      BY

B.M. I.B. @ NE CORNER OF 402 HARTFORD AVE  
ELEV. 231.479

ENGINEERING DIVISION  
TECHNOLOGY SERVICES BRANCH  
106 - 1155 PACIFIC AVE

DESIGNED BY C.W.      CHECKED BY C.H.  
DRAWN BY C.W. & T.K.      APPROVED BY

HOR. SCALE: 1 : 250  
VERTICAL: 1 : 10  
DATE: 2019/05/17



**THE CITY OF WINNIPEG**  
PUBLIC WORKS DEPARTMENT

**ANDREWS STREET**  
FROM HARTFORD AVE TO LEILA AVE  
ASPHALT OVERLAY AND ASSOCIATED WORKS  
FROM STA. 7+60 TO STA. 8+53

CITY DRAWING NUMBER SE-19-50  
SHEET 7 OF 26  
7