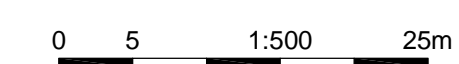


CIRCULAR CURVE DATA				
CURVE	RADIUS	TANGENT	DELTA	LENGTH
C100	6.500	3.764	60°09'02"	6.824
C101	33.500	4.875	16°33'39"	9.683
C102	100.000	11.868	13°32'12"	23.626
C103	100.000	11.917	13°35'31"	23.722
C104	200.000	9.459	5°24'56"	18.904
C105	100.000	21.124	23°51'22"	41.637
C106	100.000	10.176	11°37'14"	20.282
C107	25.000	4.216	19°08'47"	8.354
C108	28.500	13.169	49°36'06"	24.673
C109	10.000	5.417	56°53'13"	9.929
C110	30.000	3.472	13°12'11"	6.913

ALIGNMENT COORDINATE TABLE PATHWAY L20 WEST OF BRIDGE		
NAME	STATION	COORDINATES
START	20+00.00	N 5528859.07 E 621878.23
PC	20+00.22	N 5528858.94 E 621878.41
PRC	20+07.04	N 5528858.23 E 621884.88
PT	20+16.73	N 5528860.82 E 621894.18
PC	21+21.82	N 5528874.10 E 621998.43
PRC	21+45.44	N 5528879.82 E 622021.30
PT	21+69.17	N 5528885.55 E 622044.26
PC	22+93.02	N 5528901.08 E 622167.14
PRC	23+11.93	N 5528902.57 E 622185.97
PRC	23+53.56	N 5528912.37 E 622226.13
PT	23+73.84	N 5528919.24 E 622245.18
END	23+87.79	N 5528922.62 E 622258.70

ALIGNMENT COORDINATE TABLE PATHWAY L30 EAST OF BRIDGE		
NAME	STATION	COORDINATES
START	30+000.00	N 5528936.76 E 622313.52
BC	30+002.30	N 5528937.33 E 622315.75
EC	30+010.66	N 5528938.04 E 622324.03
BC	30+027.57	N 5528936.66 E 622340.89
EC	30+052.24	N 5528924.89 E 622361.70
END	30+054.86	N 5528922.77 E 622363.23



PATHWAY L20 - STA 20+000 TO 23+87.79  
PATHWAY L30 - STA 30+000 TO 30+054.856

150 WM	WATERMAIN	150 WM	SWALE	RIGHT-OF-WAY
400 FM	FEEDERMAIN	400 FM	MANHOLE	GAS
300 LDS	LAND DRAINAGE SEWER	300 LDS	CATCHBASIN	HYDRO
250 WWS	WASTEWATER SEWER	250 WWS	HYDRO BOX	MTS
300 CS	COMBINED SEWER	300 CS	HYDRO POLE	SOD
200 FCM	FORCEMAIN	200 FCM	LIGHT STANDARD	ELEVATION
	JUNCTIONS		ANCHOR	ROAD ASPHALT
	HYDRANT		TREE	CURB
	VALVE		SURVEY BAR	PATH ASPHALT
	CURB STOP		SIGNAL CONTROLLER	CONCRETE
EXISTING	LEGEND-PLAN	PROPOSED	EXISTING	LEGEND-PLAN

**LOCATION APPROVED UNDERGROUND STRUCTURES**

SUPV. U/G STRUCTURES COMMITTEE DATE

NOTE: LOCATION OF UNDERGROUND STRUCTURES AS SHOWN ARE BASED ON THE BEST INFORMATION AVAILABLE. BUT NO GUARANTEE IS GIVEN THAT ALL EXISTING UTILITIES ARE SHOWN OR THAT THE GIVEN LOCATIONS ARE EXACT. CONFIRMATION OF EXISTENCE AND EXACT LOCATION OF ALL SERVICES MUST BE OBTAINED FROM THE INDIVIDUAL UTILITIES BEFORE PROCEEDING WITH CONSTRUCTION.

B.M. CITY OF WINNIPEG 40-42	ELEV. 238.985
DESIGNED BY DAL	CHECKED BY DRA
DRAWN BY NL	APPROVED BY EFS
HOR. SCALE: 1:500	ACCEPTED BY DATE
VERTICAL:	ORIGINAL DRAWING 19.04.29
	SIGNED BY: D. MUHURDAREVIC, P.ENG.
2 ISSUED FOR CONSTRUCTION	19.05.02 DRA
1 ISSUED FOR PCN No. 6	19.04.29 DRA
NO. REVISIONS	DATE BY
	DATE 18.01.14

**TETRA TECH**

DESIGNED BY DAL CHECKED BY DRA

DRAWN BY NL APPROVED BY EFS

HOR. SCALE: 1:500

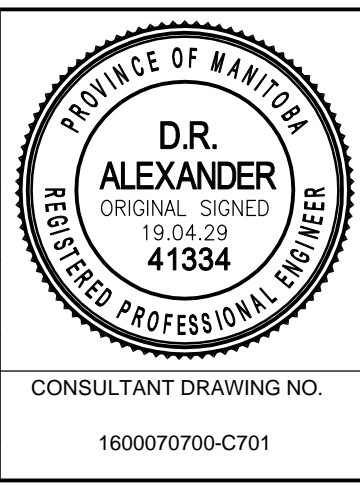
VERTICAL:

ACCEPTED BY DATE

ORIGINAL DRAWING 19.04.29

SIGNED BY: D. MUHURDAREVIC, P.ENG.

DATE 18.01.14



**THE CITY OF WINNIPEG**

PUBLIC WORKS DEPARTMENT  
ENGINEERING DIVISION

SASKATCHEWAN AT STURGEON CREEK  
BRIDGE CONSTRUCTION

SASKATCHEWAN AVENUE PATHWAY  
HORIZONTAL GEOMETRY

CITY DRAWING NUMBER  
P3487-17-701

SHEET 1 OF 5

CONSULTANT DRAWING NO.  
1600070700-C701