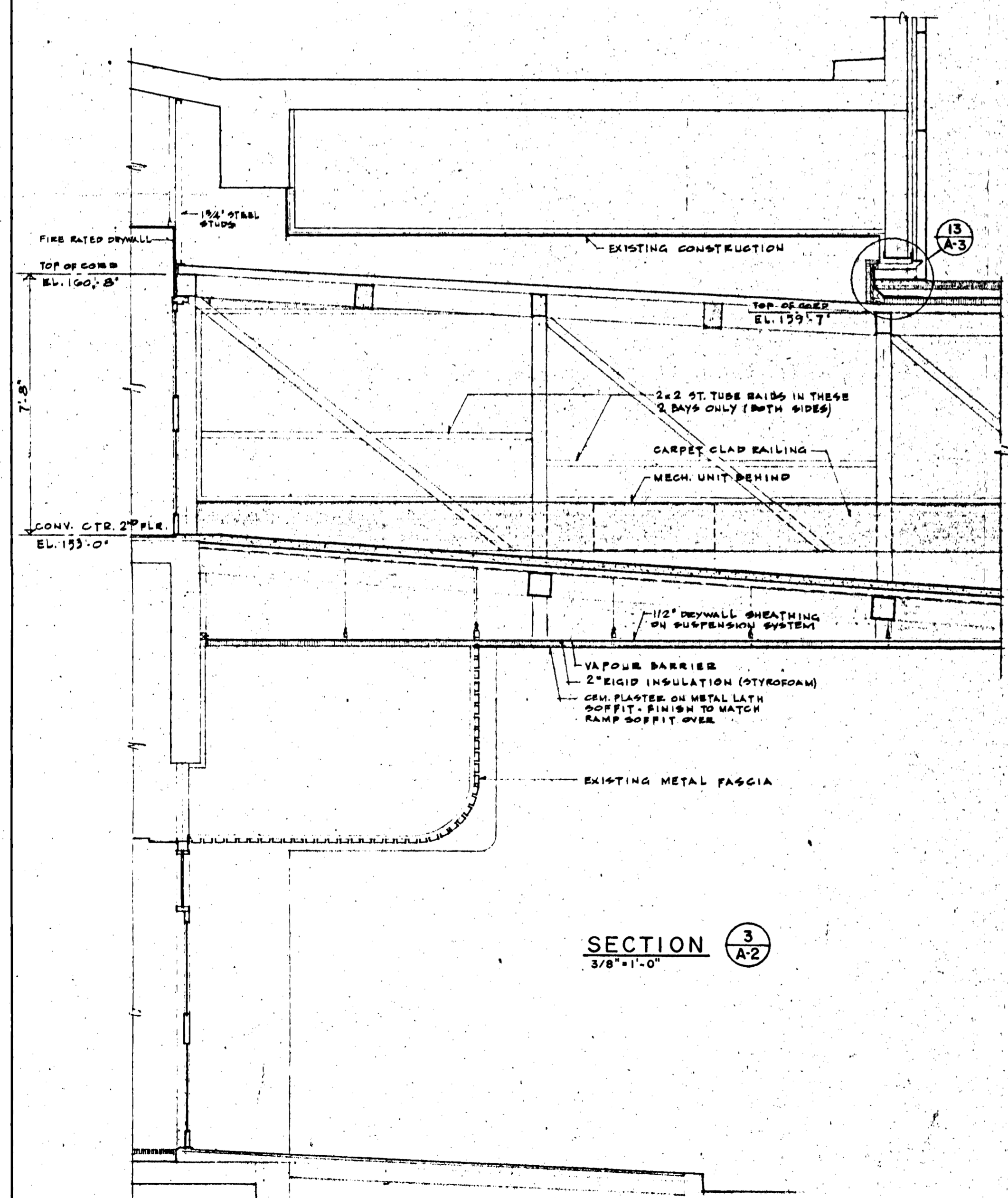
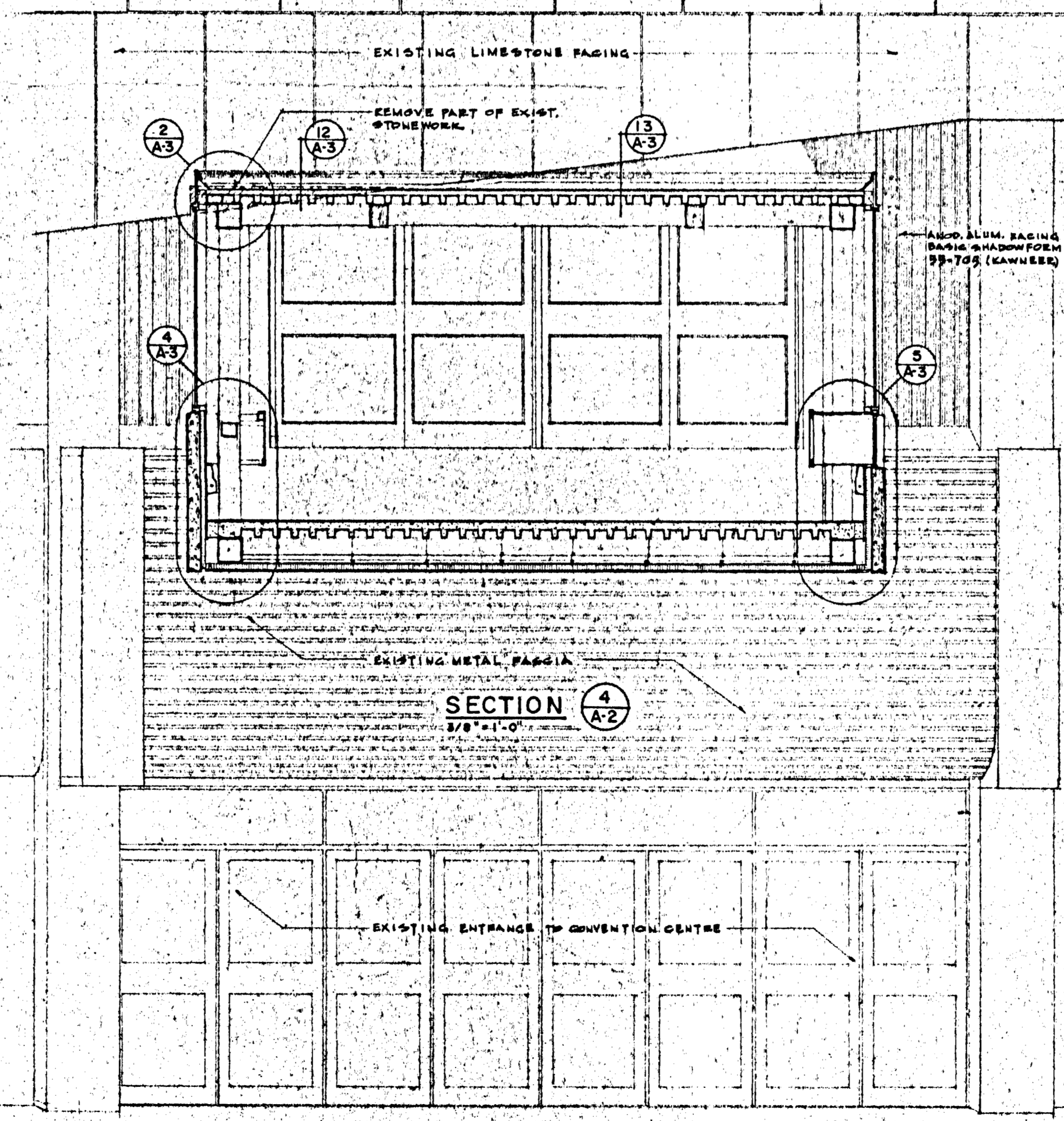


NORTH ELEVATION (1 A-2)
SCALE: 1/8"=1'-0"

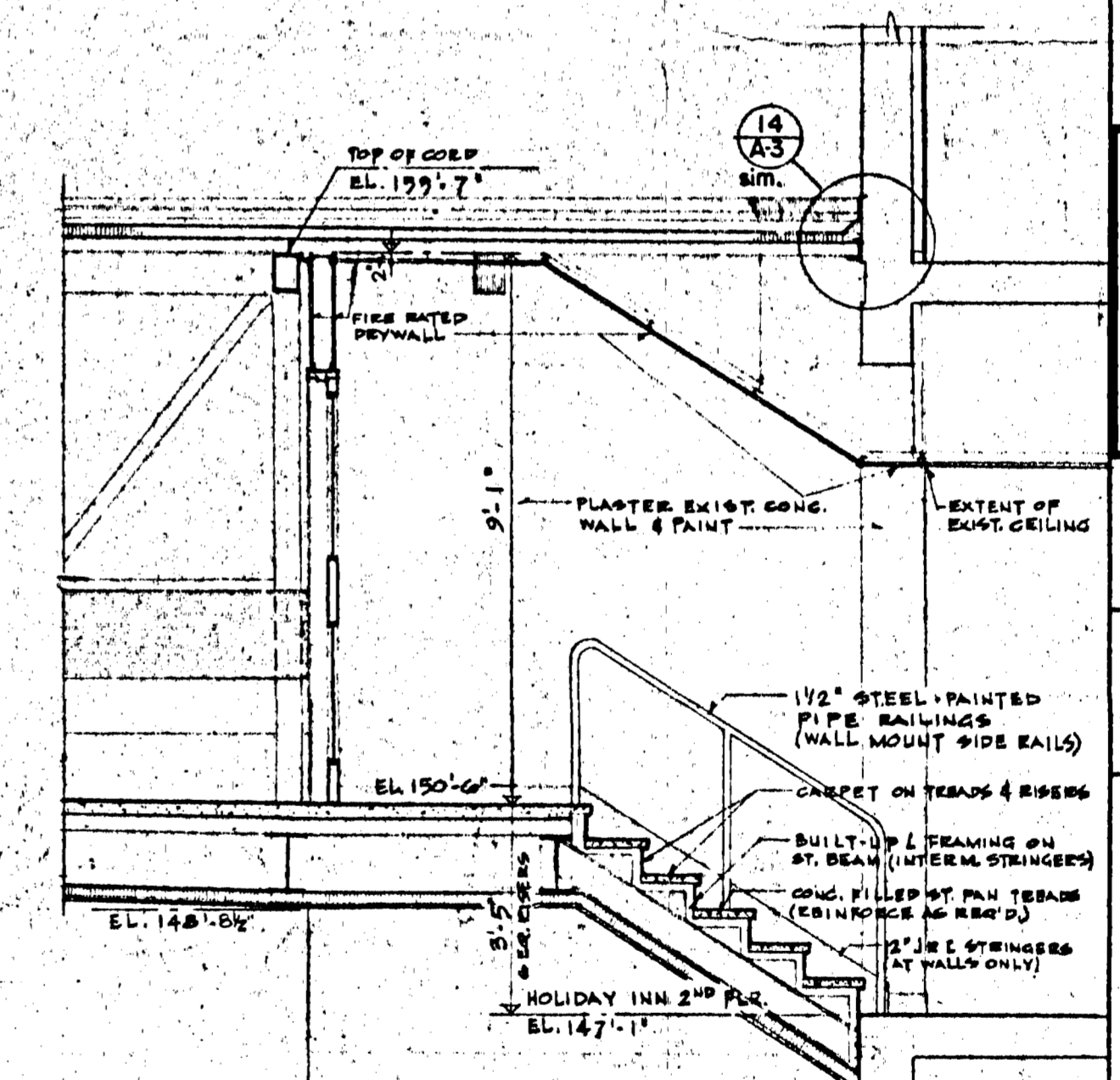
SOUTH ELEVATION (2 A-2)
SCALE: 1/8"=1'-0"



SECTION (3 A-2)
3/8"=1'-0"



SECTION (4 A-2)
3/8"=1'-0"



SECTION (5 A-2)
3/8"=1'-0"

| | | | |
|--------------------|--|----|----------|
| DATE | | OR | REVISION |
| CONTRACT DOCUMENTS | | | |

THIS DRAWING MUST NOT BE SCALED.
THE GENERAL CONTRACTOR SHALL VERIFY ALL DIMENSIONS, DATUMS AND LEVELS PRIOR TO COMMENCEMENT OF WORK. ALL ERRORS AND OMISSIONS TO BE REPORTED IMMEDIATELY TO THE ARCHITECT.
VARIATIONS & MODIFICATIONS TO WORK SHOWN ON THESE DRAWINGS SHALL NOT BE CARRIED OUT WITHOUT WRITTEN PERMISSION FROM THE ARCHITECT.
THIS DRAWING IS THE EXCLUSIVE PROPERTY OF THE ARCHITECTS AND CAN BE REPRODUCED ONLY WITH THE PERMISSION OF THE ARCHITECTS, IN WHICH CASE THE REPRODUCTION MUST BEAR THEIR NAME AS ARCHITECTS.

Winnipeg
CONSORTIUM
THE CIVIC ARCHITECTURAL GROUP
THE NUMBER TEN ARCHITECTURAL GROUP
ARCHITECTS
1000 St. James St. W. Winnipeg, S.C. 2R9
Telephone (204) 433-2444

ASSOCIATE ARCHITECT

CONSULTING ENGINEER

ARCH. SEAL
PROVINCE OF MANITOBA
BLANKSTON GROUP
MANITOBA B.C. 03
REGISTERED ARCHITECTS

PROVINCE OF MANITOBA
MICHENER
FRIESEN
KINRADE
REGISTERED ARCHITECTS

PROJECT
PEDESTRIAN WALKWAY N° 1
FROM
THE WINNIPEG CONVENTION CENTRE
TO
THE HOLIDAY INN

SHEET TITLE
ELEVATIONS & SECTIONS

AUG 18 1974

| | | |
|------------------|-------------|------------------|
| DRAWN BY D.C. | DATE | SHEET NO. A-2 |
| CHECKED BY | PROJECT NO. | FILE NO. |

B-14
FILE
RETURN TO CIVIC
PRESERVES BUILDING
INVENTORY.
6 08 1