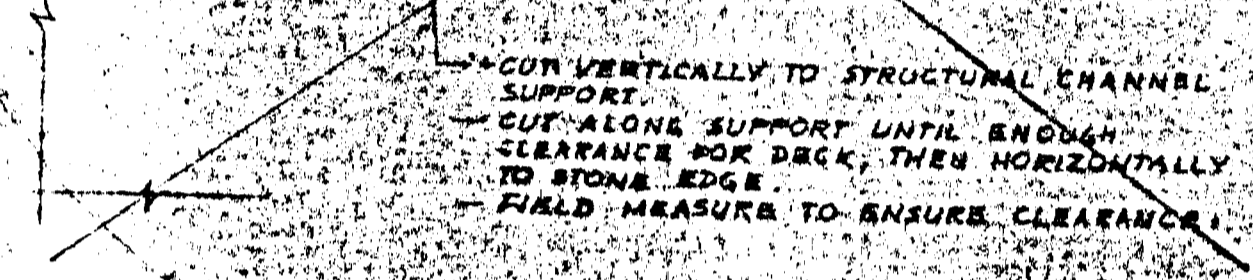


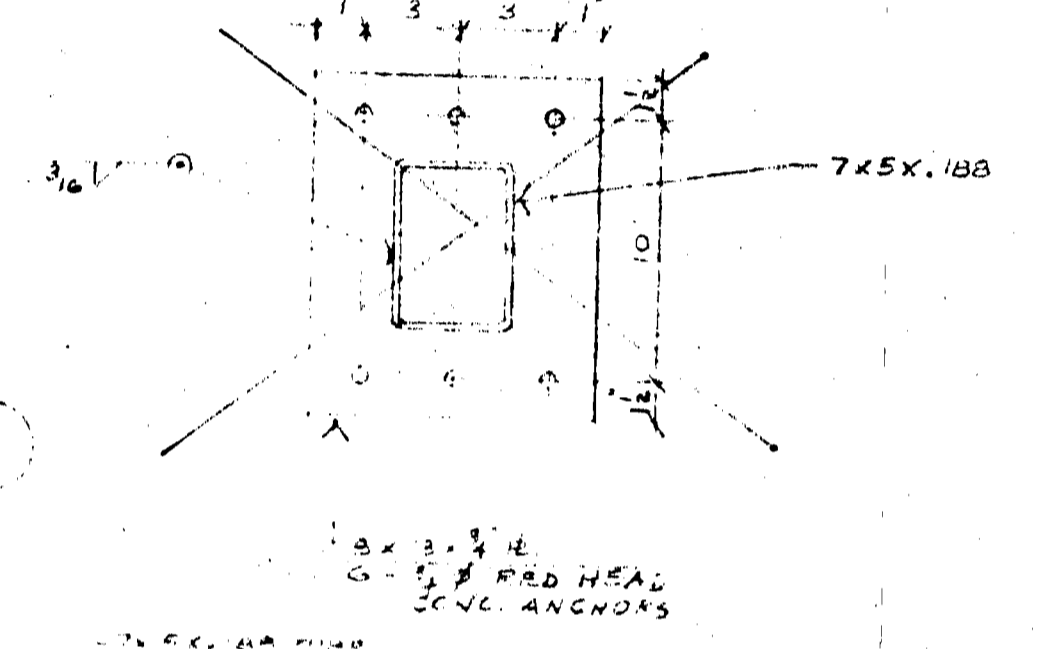
LONGITUDINAL SECTION
SCALE - 1/8" = 1'-0"

SECTION 6
SCALE - 3/8" = 1'-0"

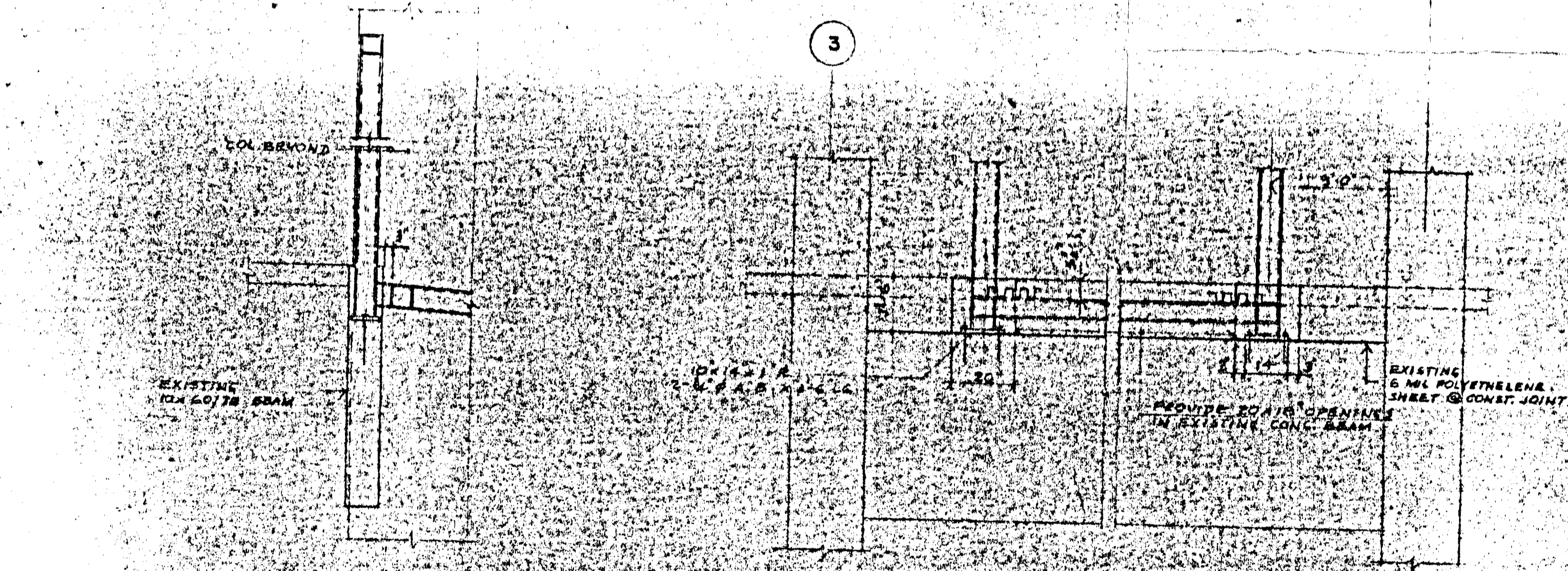


DETAIL 'A'
TYP. FOR ALL JOINTS

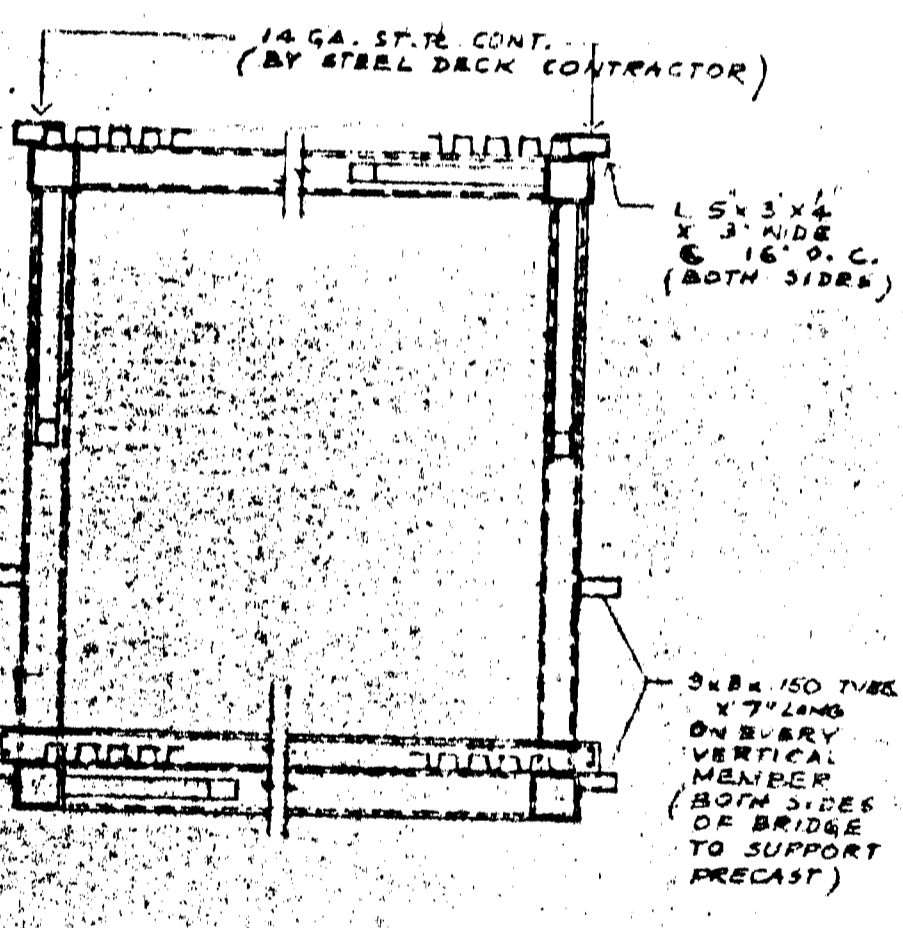
SECTION 6
SCALE - 1/2" = 1'-0"



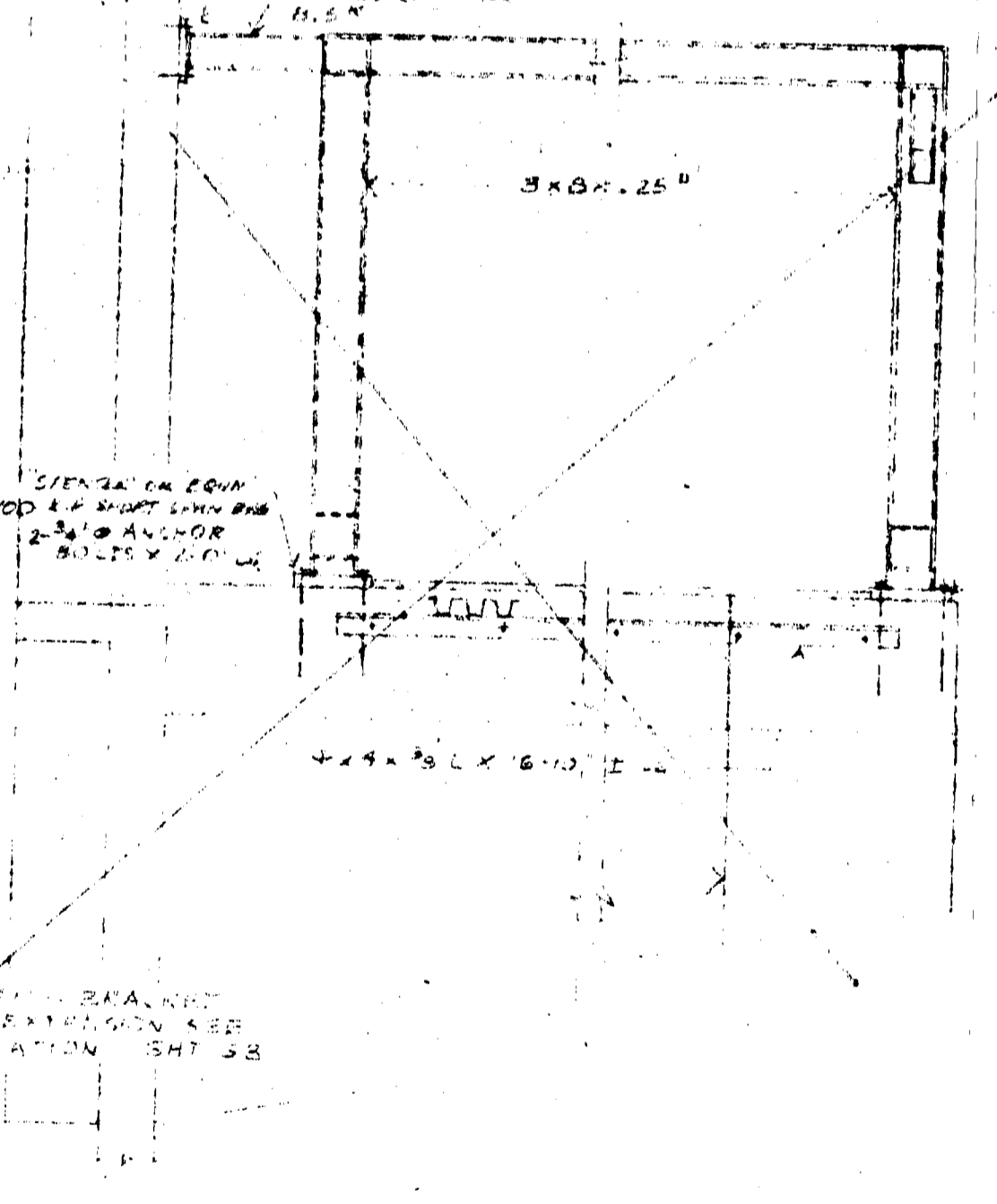
DETAIL 'C'
THIS SH. T.



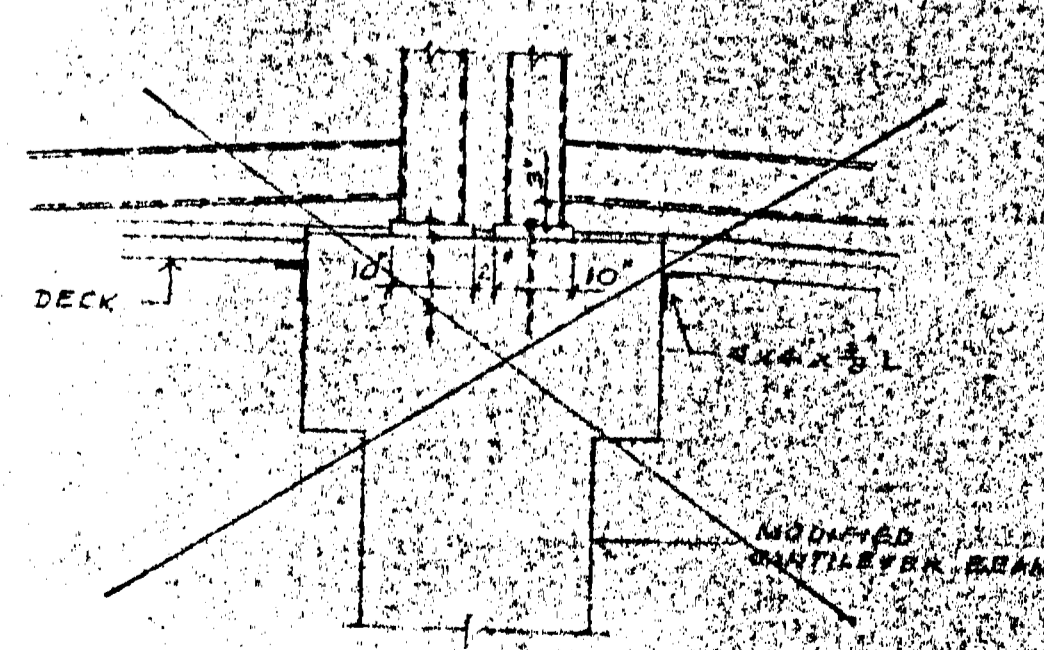
SECTION 1A
SCALE - 1/2" = 1'-0"



SECTION 2
SCALE - 3/8" = 1'-0"



SECTION 3
SCALE - 3/8" = 1'-0"



DETAIL 'C'
SCALE - 1/2" = 1'-0"

DATE	OR	REVISION

THIS DRAWING MUST NOT BE SCALED.
THE GENERAL CONTRACTOR SHALL VERIFY ALL DIMENSIONS, DATUMS AND LEVELS PRIOR TO COMMENCEMENT OF WORK. ALL ERRORS AND OMISSIONS TO BE REPORTED IMMEDIATELY TO THE ARCHITECT.
VARIATIONS & MODIFICATIONS TO WORK SHOWN ON THESE DRAWINGS SHALL NOT BE CARRIED OUT WITHOUT WRITTEN PERMISSION FROM THE ARCHITECT.
THIS DRAWING IS THE EXCLUSIVE PROPERTY OF THE ARCHITECTS AND CAN BE REPRODUCED ONLY WITH THE PERMISSION OF THE ARCHITECTS, IN WHICH CASE THE REPRODUCTION MUST BEAR THEIR NAME AS ARCHITECTS.

WINNIPEG CONSORTIUM
THE LVM ARCHITECTURAL GROUP
THE NUMBER TEN ARCHITECTURAL GROUP

ARCHITECTS
50th Floor - The Lakeshore Centre - 175 Carlton St. - Winnipeg, R3C 9P9
Telephone: (204) 942-5546

ASSOCIATE ARCHITECT

CONSULTING ENGINEER
C CROSBIE, GREENBERG & PARTNERS
CONSULTING CIVIL AND STRUCTURAL ENGINEERS
100 Park - 201 West Tower - Winnipeg, R3C 1G1 - Telephone: (204) 942-5546

ARCH. SEAL
ENG. SEAL
PROFESSOR OF MECHANICAL ENGINEERING
T. GAUL
REGISTERED ENGINEER

PROJECT
PEDESTRIAN WALKWAY No. 2
FROM
THE WINNIPEG CONVENTION CENTRE
TO
ONE LAKEVIEW SQUARE

SHEET TITLE
SECTIONS & DETAILS
AUG 8 1974

DRAWN BY	DATE	SHEET NO
		S-2
CHECKED BY	PROJECT NO.	FILE NO.

B-14
FILE
RETURN TO CIVIC
PROPERTY OFFICER
INVENTORY
6 08 1