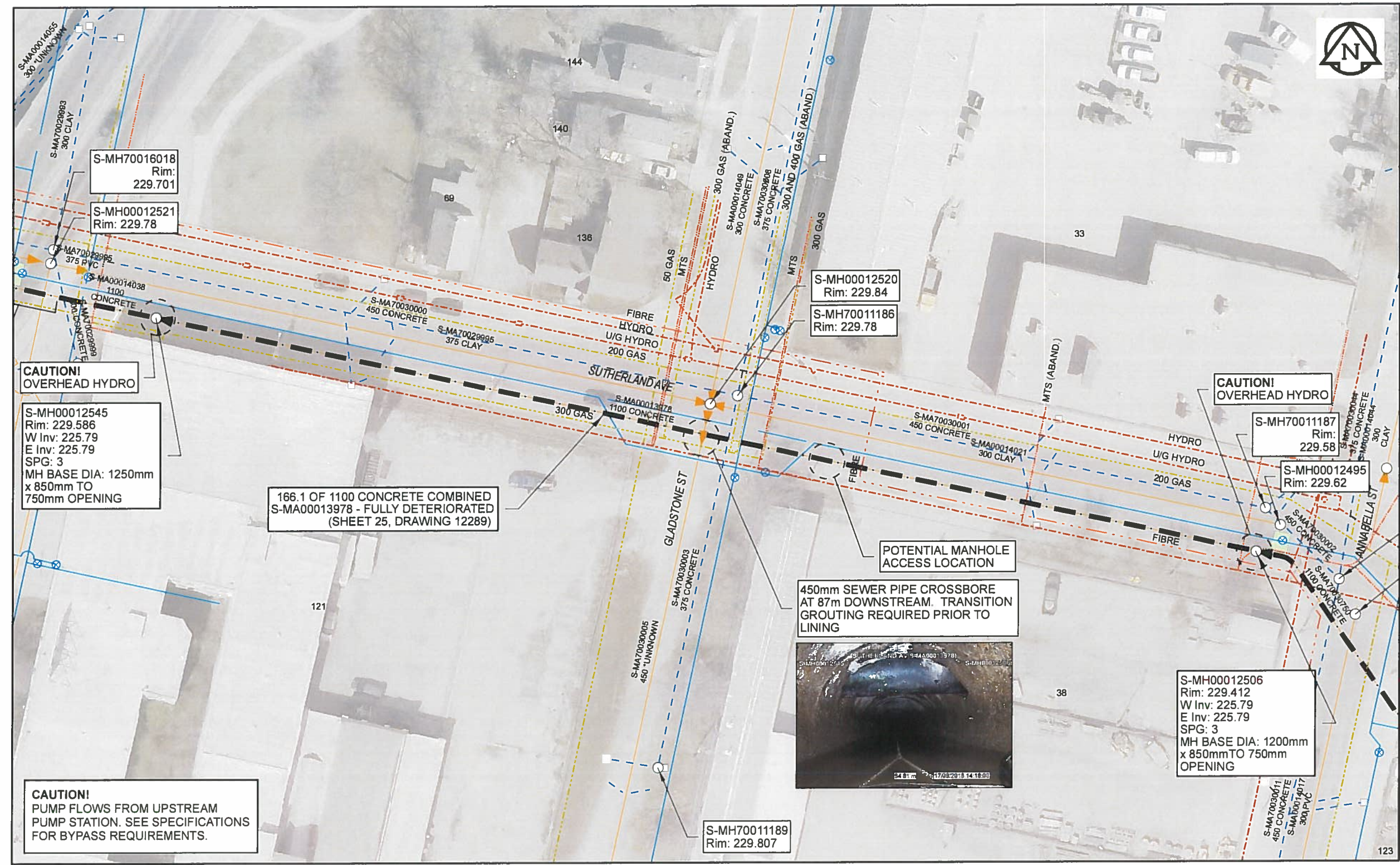


**Sewer Junction Information**  
(From Video Inspection)  
Reference MH Distance Size Clock



**Traffic Controls**  
Regional Street Lane Closure Required: No  
Impacted Regional Street: N/A

**General Requirements:**  
Residential street restrictions. Maintain NB traffic on Annabella St. Maintain access to local businesses.

**WARNING**  
IF POWER EQUIPMENT OR EXPLOSIVES ARE TO BE USED FOR EXCAVATION ON THIS PROJECT, THE CONTRACTOR MUST:  
1) NOTIFY THE GAS COMPANY OF THE PROPOSED LOCATION OF EXCAVATION.  
2) TAKE PRECAUTION TO AVOID DAMAGE TO GAS COMPANY INSTALLATIONS.  
SEE PROVINCIAL REGULATION 140/92 FOR DETAILS

**ENGINEERS  
GEOSCIENTISTS  
MANITOBA**  
Certificate of Authorization  
AECOM Canada Ltd.  
No. 4671 Date: 2019-11-27

**METRIC**  
WHOLE NUMBERS INDICATE MILLIMETRES  
DECIMALIZED NUMBERS INDICATE METRES  
0 2.55 10 15 20  
Meters  
BID OPPORTUNITY NO. 481-2019

AECOM REVIEW DRFT CHK  
FILE NAME: 2018\_LiningC2\_SCALE625\_24-29 SAVED BY: ES

LOCATION APPROVED UNDERGROUND STRUCTURES			
SUPR. U/G STRUCTURES	DATE		
<b>NOTE:</b> LOCATION OF UNDERGROUND STRUCTURES AS SHOWN ARE BASED ON THE BEST INFORMATION AVAILABLE. BUT NO GUARANTEE IS GIVEN THAT ALL EXISTING UTILITIES ARE SHOWN OR THAT THE GIVEN LOCATIONS ARE EXACT. CONFIRMATION OF EXISTENCE AND EXACT LOCATION OF ALL SERVICES MUST BE OBTAINED FROM THE INDIVIDUAL UTILITIES BEFORE PROCEEDING WITH CONSTRUCTION.			
NO.	REVISIONS	YY/MM/DD	BY
0	ISSUED FOR CONSTRUCTION	19/11/28	ES

**AECOM**

DESIGNED BY	NK	CHECKED BY	AB
DRAWN BY	ES	APPROVED BY	<i>[Signature]</i>
HOR. SCALE	1:625	RELEASED FOR CONSTRUCTION	<i>[Signature]</i>
VERT. SCALE	N/A	DATE	Nov 28/19

PROFESSIONAL'S SEAL  
  
 KEHLER  
 Member  
 30100  
 REGISTERED PROFESSIONAL ENGINEER  
 CONSULTANT DRAWING NO.  
 60592047-01-C-2018\_LiningC2\_RA.mxd

**THE CITY OF WINNIPEG**  
 WATER AND WASTE DEPARTMENT

2018 SEWER RENEWALS  
 BY CIPP LINING  
 CONTRACT 2  
 SUTHERLAND AVE  
 MH AT GOMEZ ST N TO MH AT ANNABELLA ST

SHEET	25	OF	32
CITY DRAWING NUMBER	12289		
REV	0		