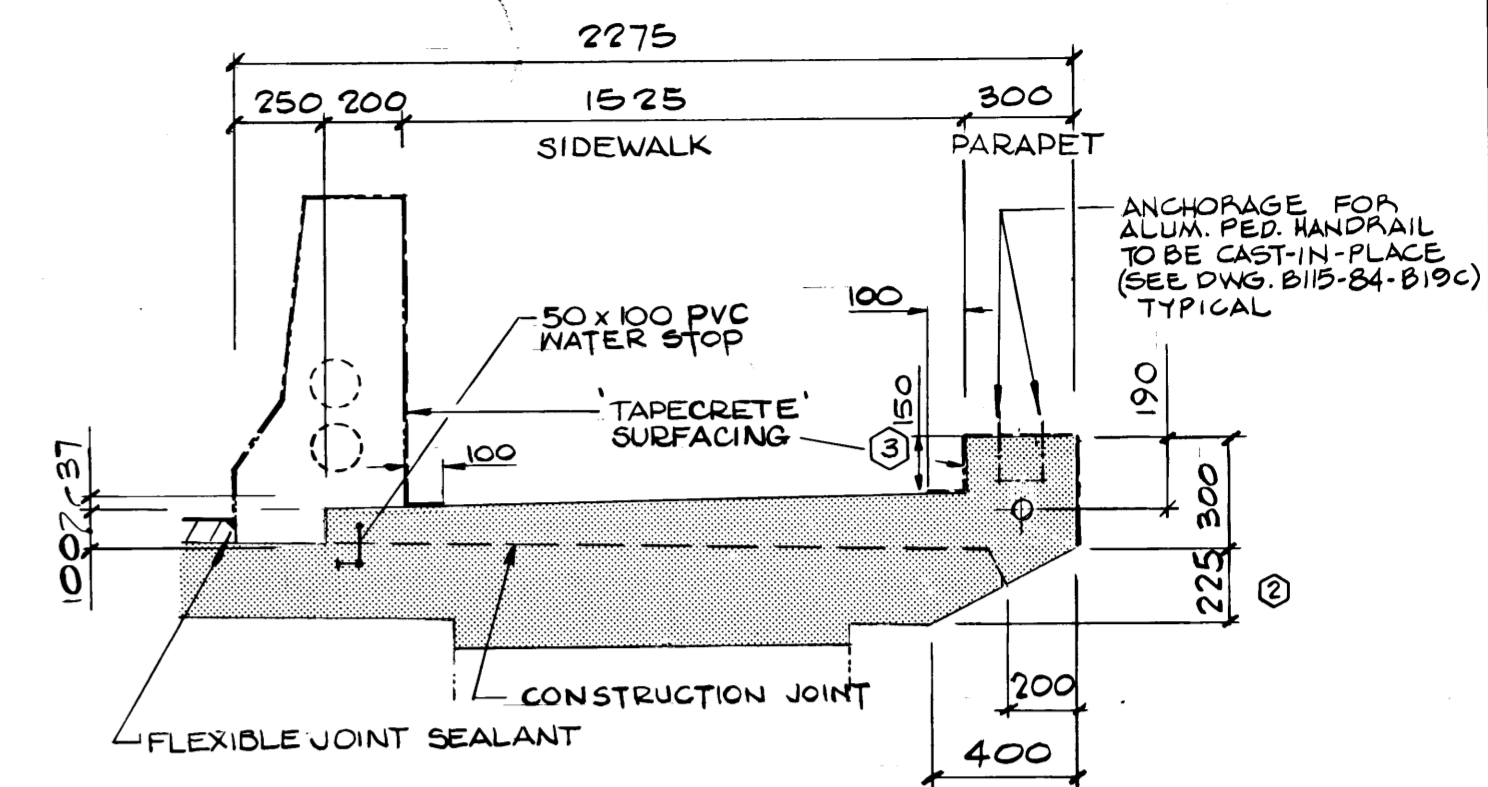


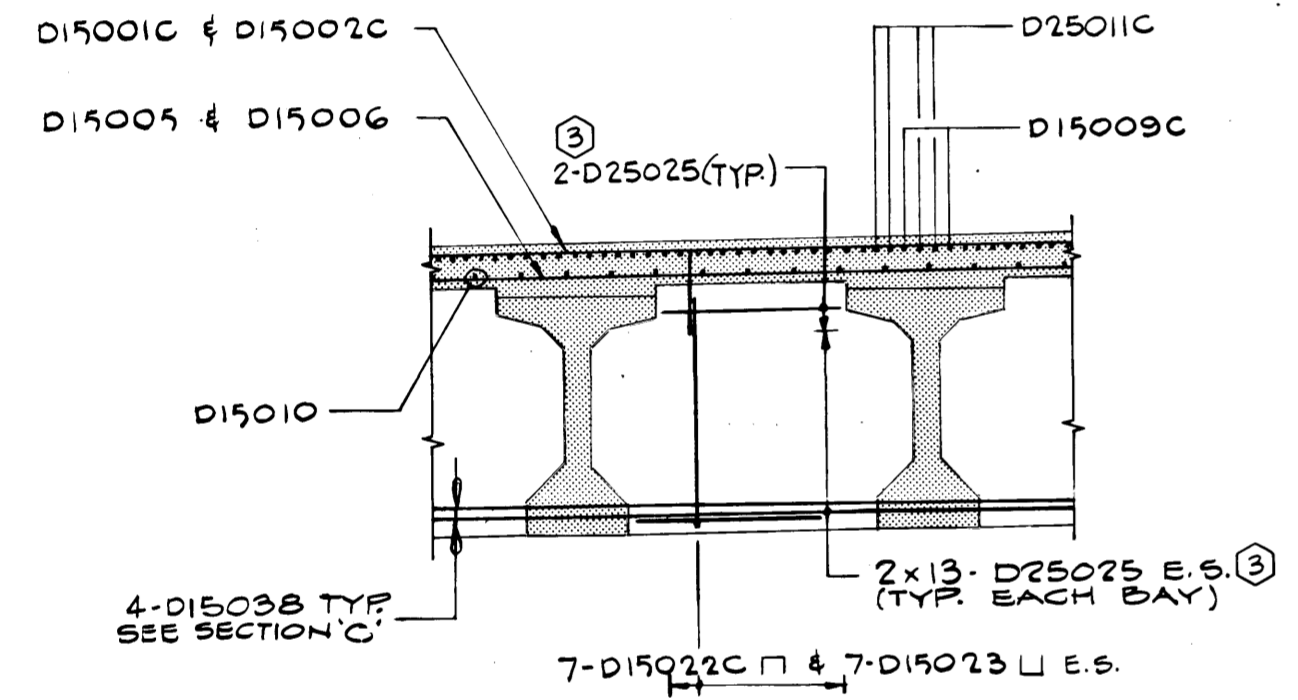
**TYPICAL SECTION**

SCALE - 1:50



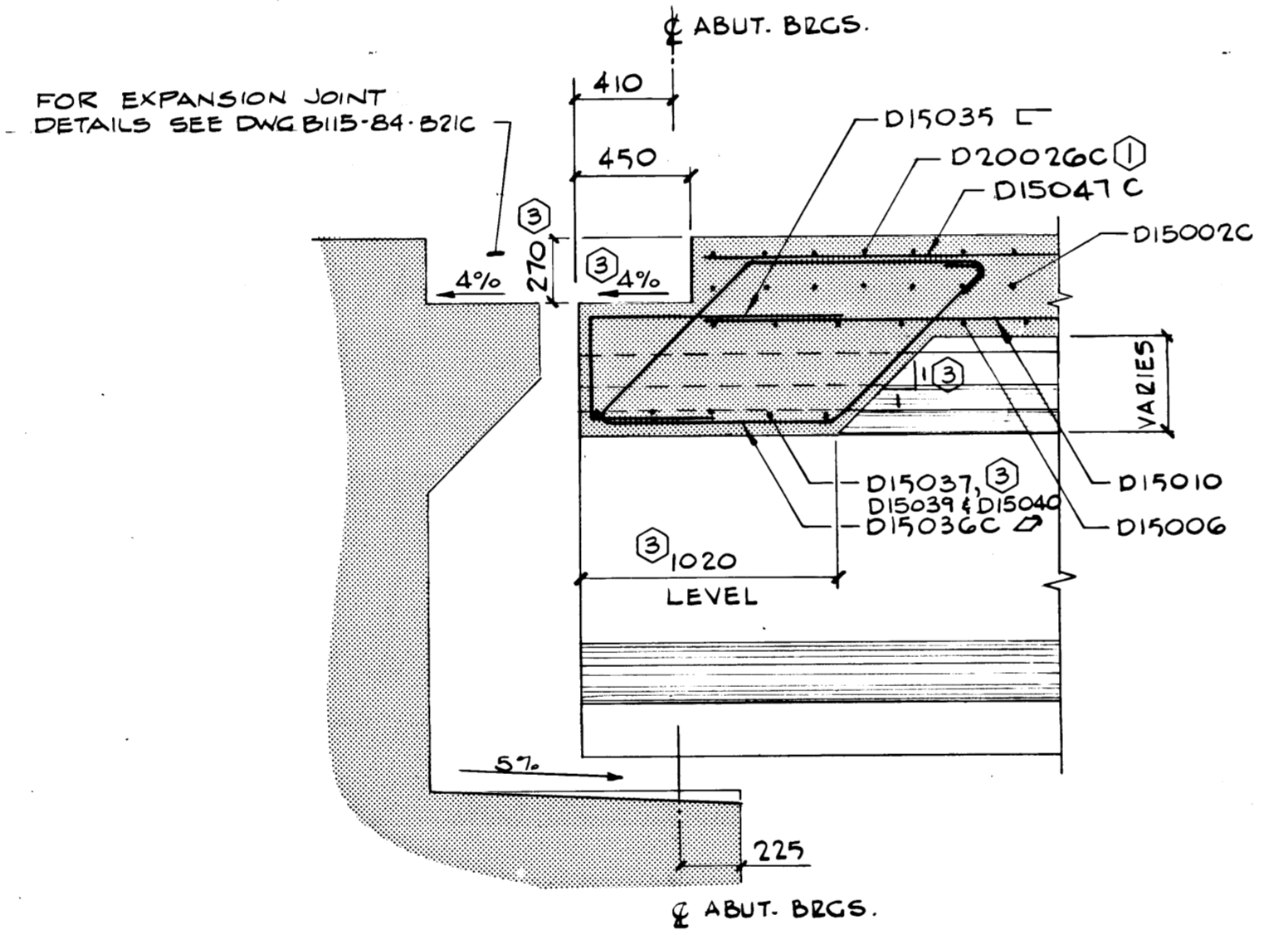
**DETAIL 'E'**

SCALE - 1:20



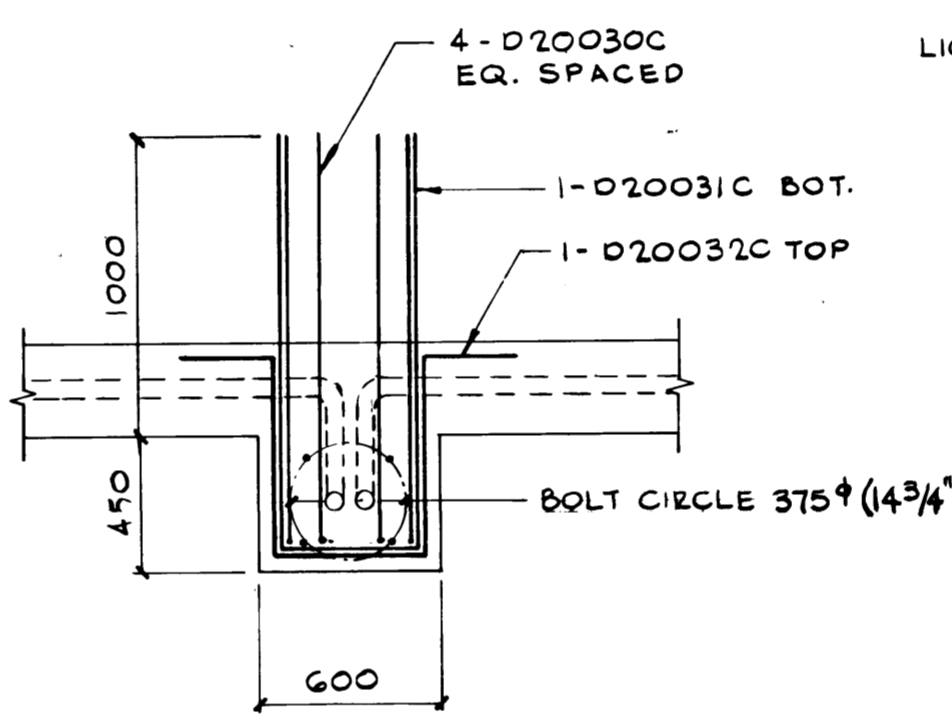
**DIAPHRAGM AT PIERS**

SCALE - 1:50

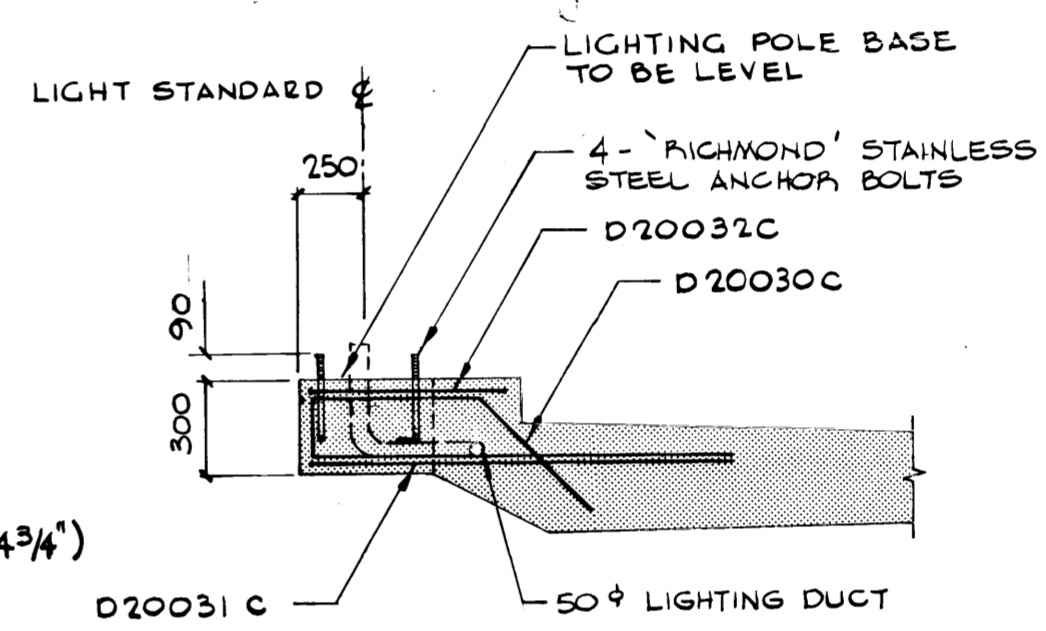


**SECTION 'D'**

SCALE - 1:25



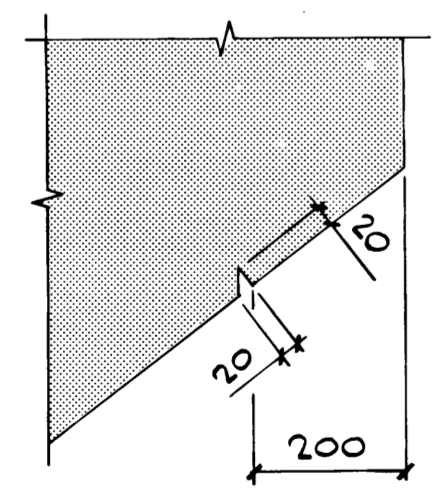
**PLAN**



**SECTION**

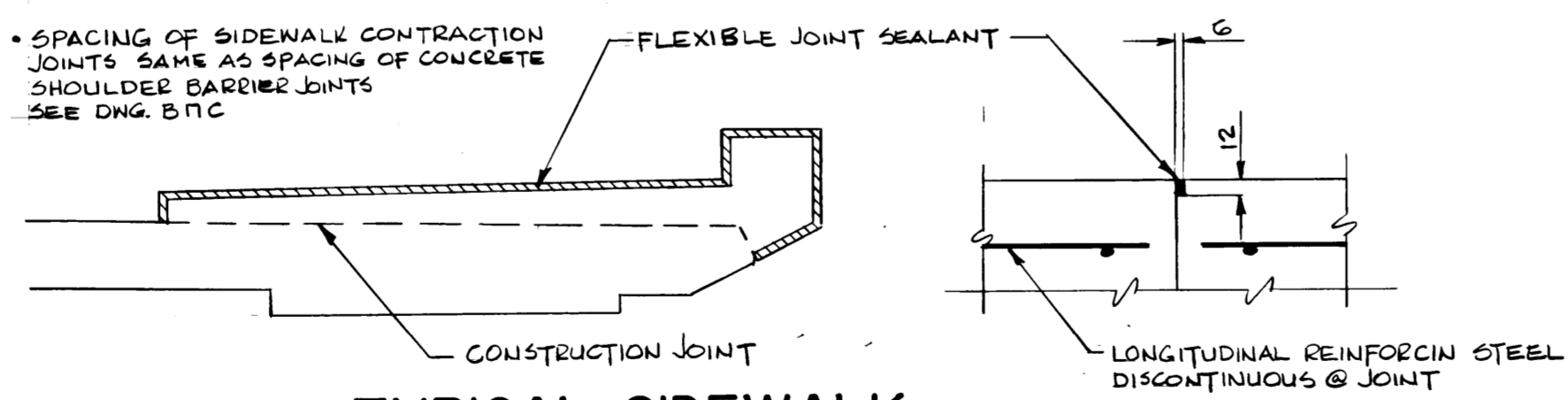
**LIGHTING POLE BASE DETAIL**

SCALE - 1:25



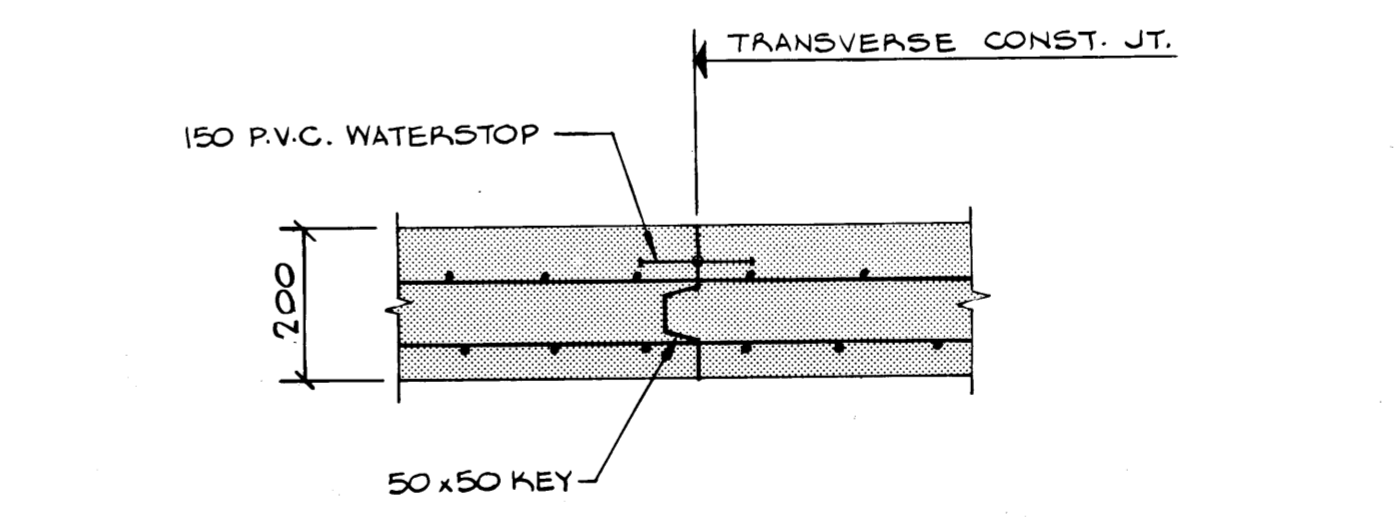
**DRIP DETAIL**

N.T.S.



**TYPICAL SIDEWALK CONTRACTION JOINT DETAIL**

N.T.S.



**TYPICAL CONSTRUCTION JOINT DETAIL 'F'**

SCALE - 1:10

- NOTES:**
- THIS DRAWING TO BE READ IN CONJUNCTION WITH DRAWING B115-84-B13C.
  - ALL EXPOSED EDGES OF SUPERSTRUCTURE CONCRETE TO BE CHAMFERED 13mm.

NO	REVISIONS	DATE	APP.
1	SIDEWALK BARS REARRANGED	83-8-5	J.J.
2	REVISED DIMENSION FROM 281 TO 225	84-3-2	J.J.
3	REVISED AS NOTED	84-3-27	J.J.
4	REVISED TO RECORD DRAWING	FEB/86	J.J.



**RECORD DRAWING**

the **uma** group  
Underwood McLellan Ltd.  
Consulting Engineers and Planners

DESIGNED BY: K.S.U. DRAWN BY: A.T.  
CHECKED BY: K.S.U. DATE: JUNE 15, 1983  
JOB No: 0265-204-05

APPROVED BY: *[Signature]* DATE: April 9/83

**THE CITY OF WINNIPEG**

WORKS & OPERATIONS DIVISION  
STREETS & TRANSPORTATION DEPARTMENT

Renamed the **SLAW REBCHUK BRIDGE** on October 29, 1984

**B-5544-14 METRIC**

WHOLE NUMBERS INDICATE MILLIMETRES  
DECIMALIZED NUMBERS INDICATE METRES

**SALTER STREET BRIDGE REPLACEMENT PROJECT**

CONCRETE GIRDER ALTERNATIVE DECK REINFORCING II

AUTHORIZED BY: *[Signature]* P.Eng. DATE: 1983-06-16  
ACCEPTED BY: *[Signature]* P.Eng. DATE: 1983-06-16

SCALE: AS NOTED DRAWING NO: B115-84-B14C