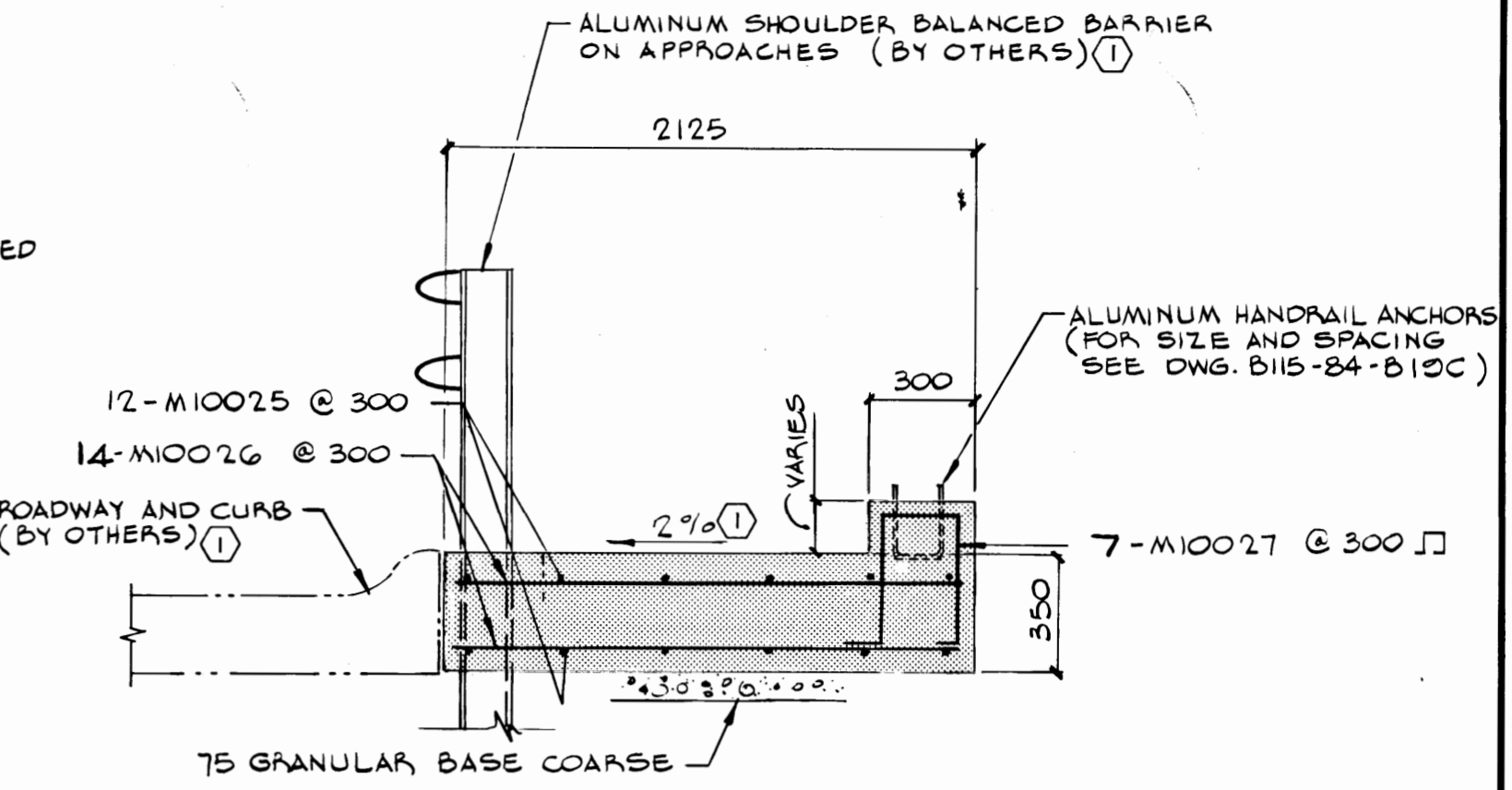
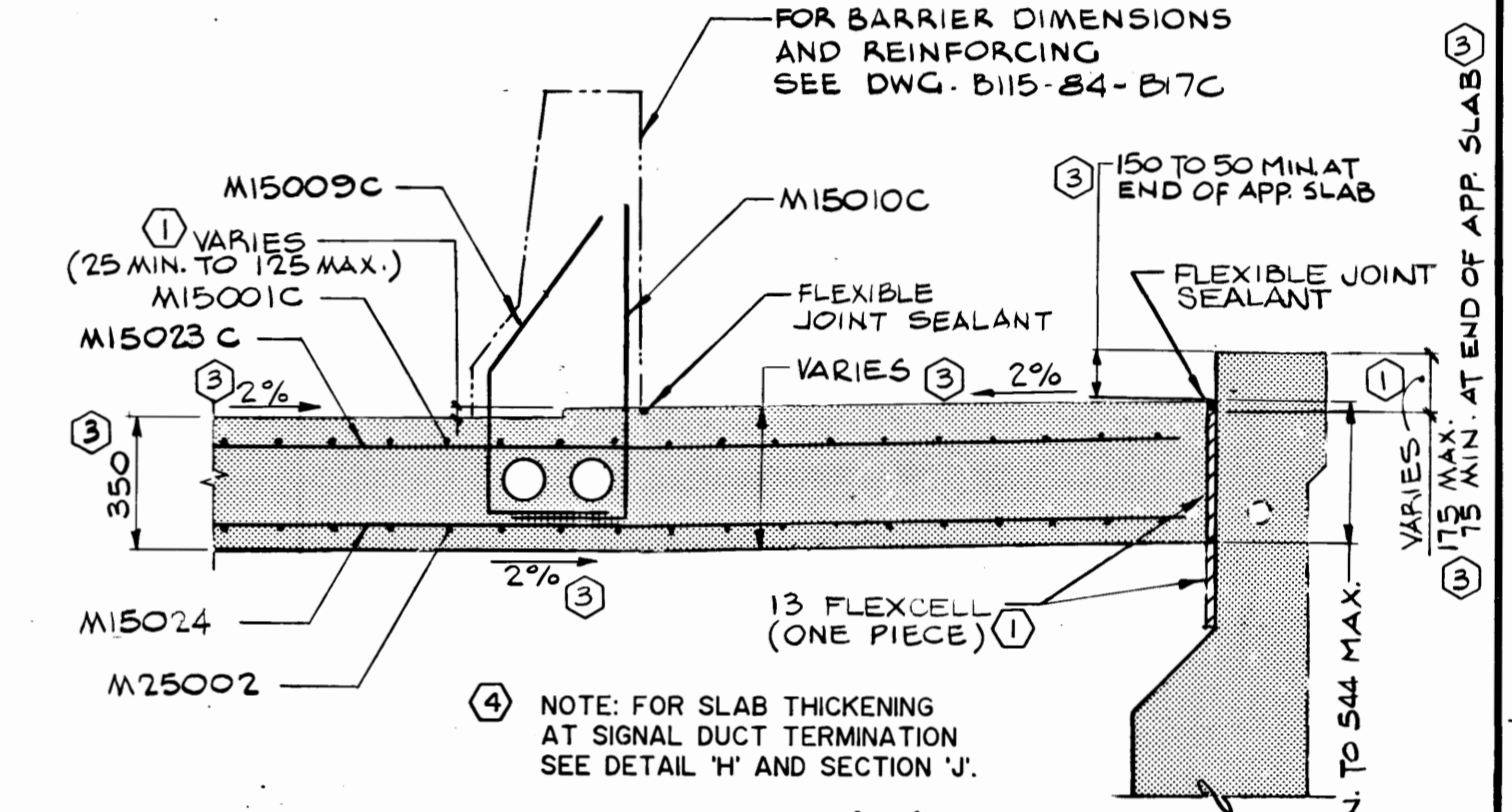


PLAN
SCALE - 1:100

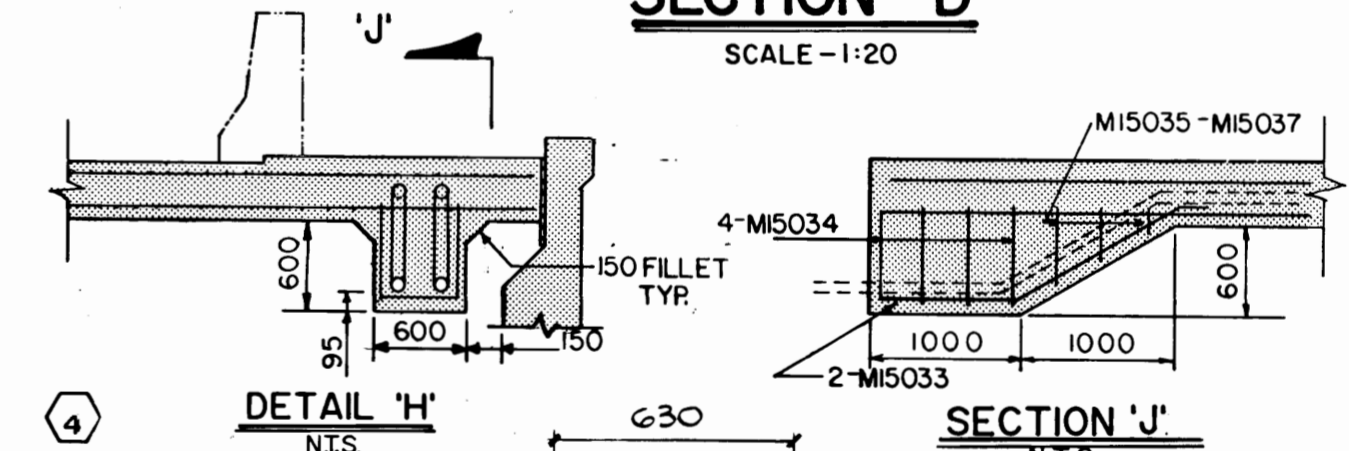
NOTE:
MEDIAN CONCRETE TRAFFIC BARRIER
TO BE LOCATED IN FIELD BY ENGINEER.



SECTION 'E'
SCALE - 1:20

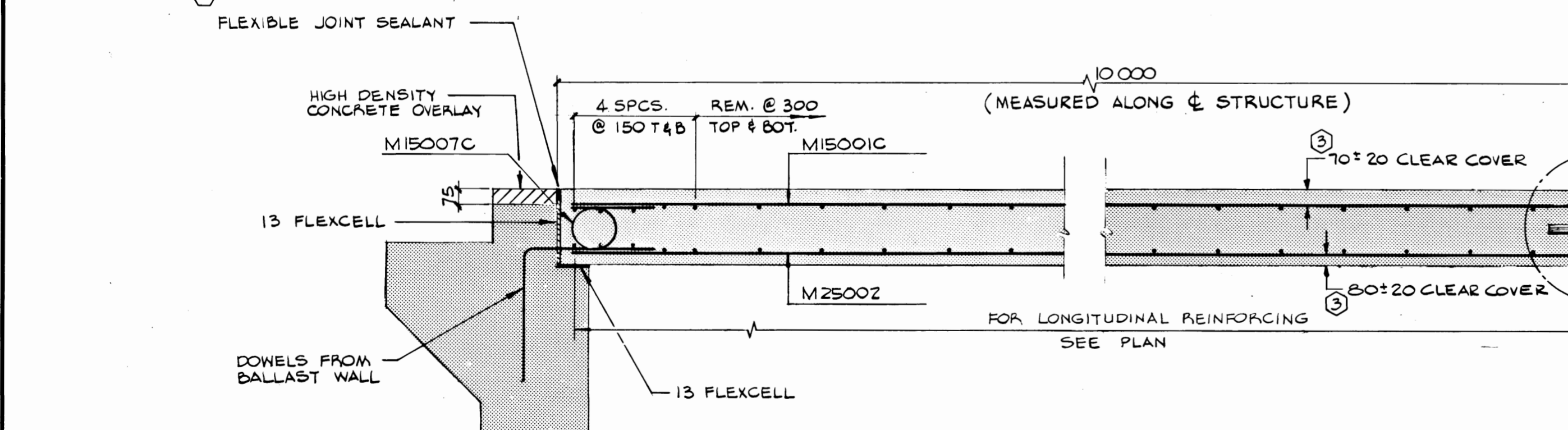


SECTION 'D'
SCALE - 1:20

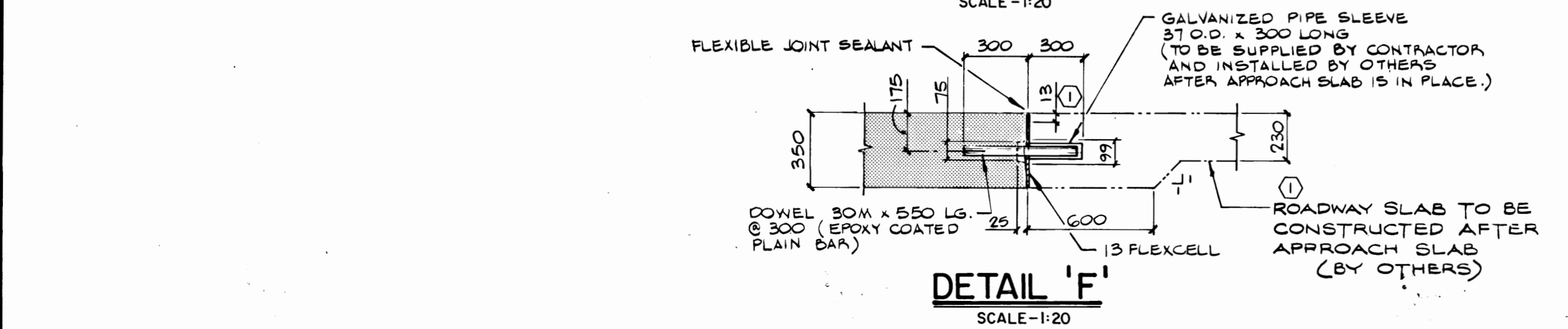


DETAIL 'H'
N.T.S.

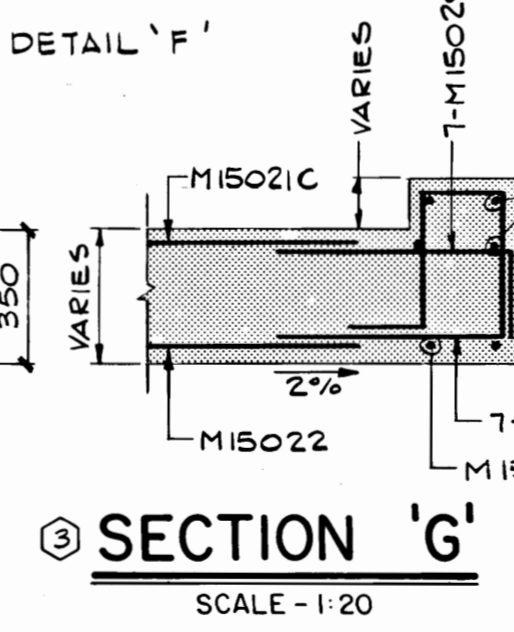
SECTION 'J'
N.T.S.



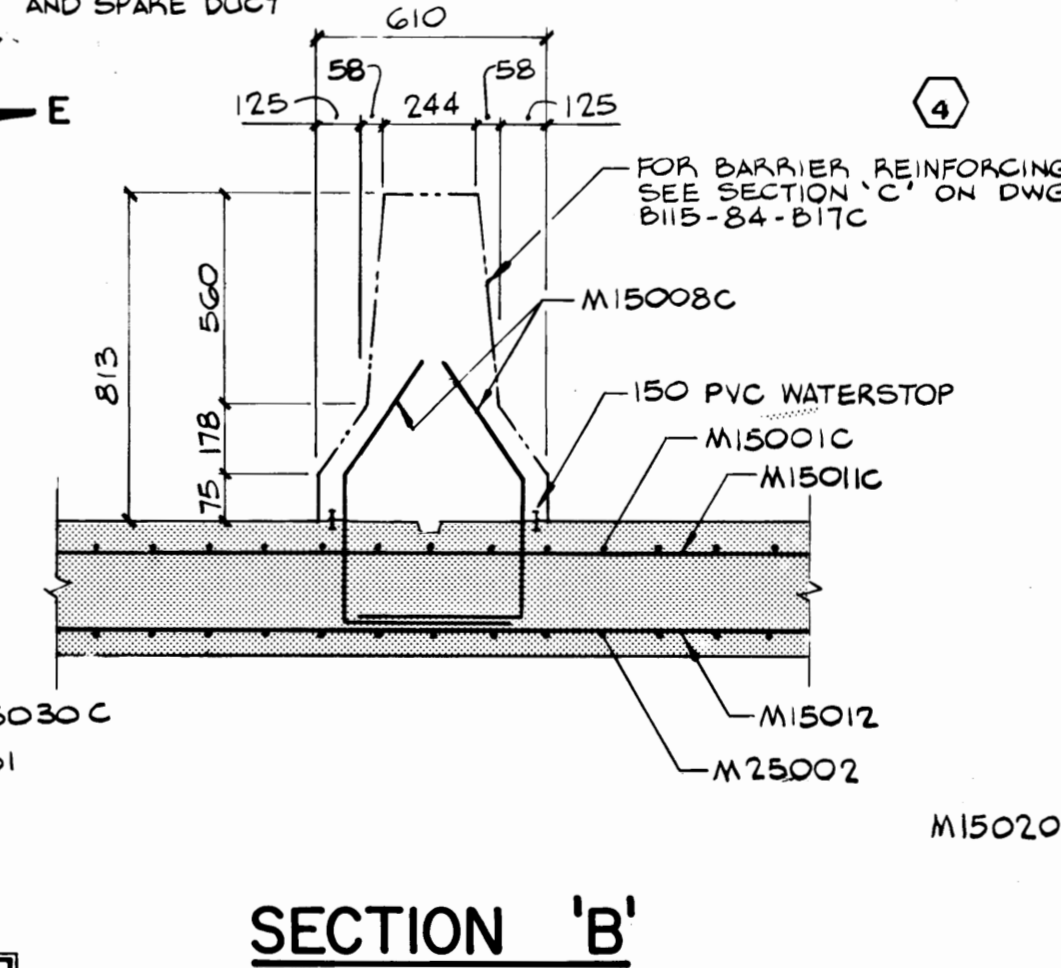
SECTION 'A'
SCALE - 1:20



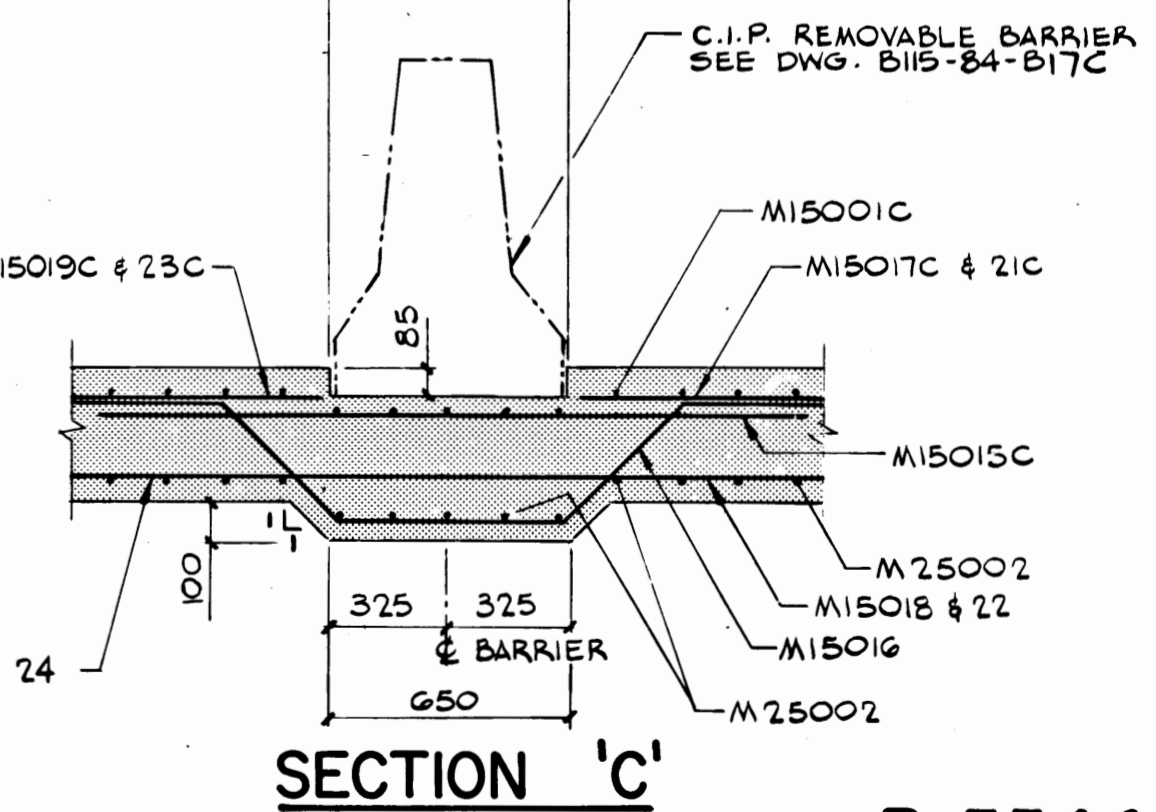
DETAIL 'F'
SCALE - 1:20



SECTION 'G'
SCALE - 1:20



SECTION 'B'
SCALE - 1:20
(C.I.P. BARRIER)



SECTION 'C'
SCALE - 1:20
(C.I.P. REMOVABLE BARRIER)

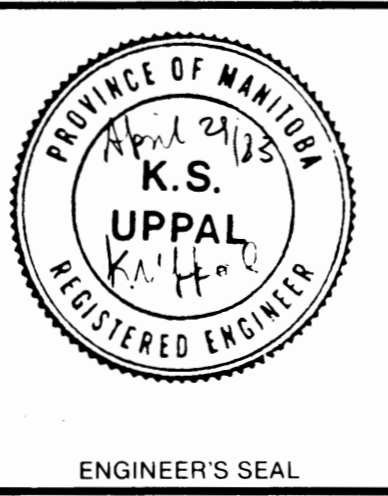
**Renamed the
SLAW REBCHUK BRIDGE
on October 29, 1984**

RECORD DRAWING

**B-5544-23
METRIC**

WHOLE NUMBERS INDICATE MILLIMETRES
DECIMALIZED NUMBERS INDICATE METRES

1	ADDENDUM No. 1	7/4/83	K.U.
2	REVISED AS NOTED	83-8-5	J.J.
3	REVISED AS NOTED	84-3-27	
4	ADD SECTIONS 'H' AND 'J'	84.6.14	J.J.
5	REVISED TO RECORD DRAWING	FEB/86	
NO	REVISIONS	DATE	APP



the uma group		Underwood McLellan Ltd. Consulting Engineers and Planners	
DESIGNED BY:	J.C.J.	DRAWN BY:	A.T.
CHECKED BY:	K.S.U.	DATE:	JUNE 15, 1983.
APPROVED BY:	<i>[Signature]</i>	JOB No:	0265-204-05
		DATE:	April 29/83

THE CITY OF WINNIPEG
WORKS & OPERATIONS
DIVISION
STREETS & TRANSPORTATION
DEPARTMENT

**SALTER STREET BRIDGE
REPLACEMENT PROJECT**
CONCRETE GIRDER ALTERNATIVE
APPROACH SLAB DETAILS
AUTHORIZED BY: *[Signature]* 1983-06-16
ACCEPTED BY: *[Signature]* 1983-06-16
SCALE: AS NOTED
DRAWING NO. B115-84-B23C