

GENERAL NOTES

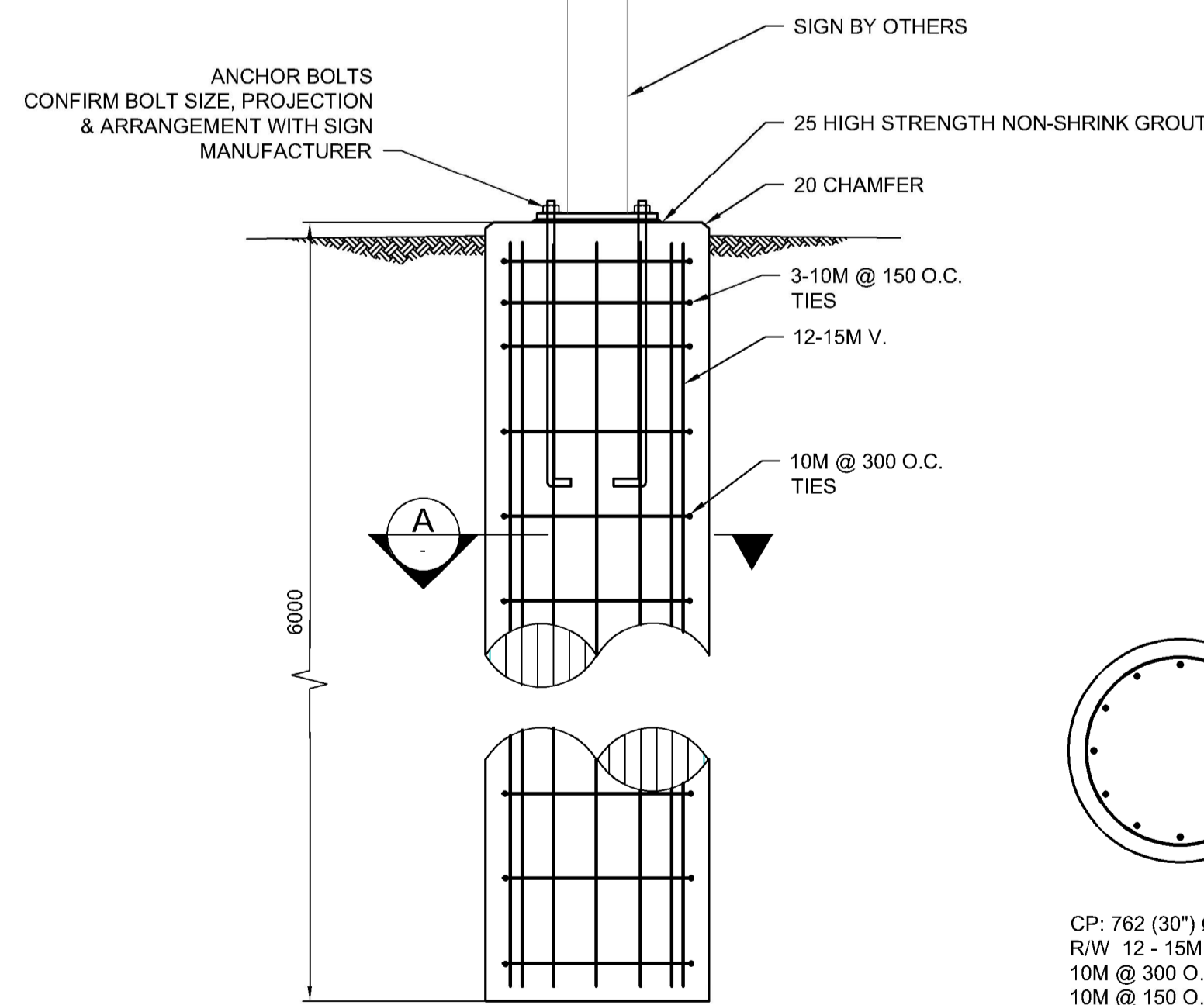
- 1) THE DRAWING IS TO BE READ IN CONJUNCTION WITH THE CONTRACT SPECIFICATIONS.
- 2) ALL WORK SHALL CONFORM TO THE LATEST MANITOBA BUILDING CODE, THE ASSOCIATING NATIONAL BUILDING CODE OF CANADA, AND THE LATEST CANADIAN HIGHWAY BRIDGE DESIGN CODE.
- 3) DO NOT CONSTRUCT FROM THIS DRAWING UNLESS MARKED "ISSUED FOR CONSTRUCTION".
- 4) THE CONTRACTOR SHALL BE RESPONSIBLE FOR APPLYING AND SECURING ALL NECESSARY PERMITS.
- 5) CONTRACTOR MUST SAFEGUARD AND PROTECT ALL EXISTING STRUCTURES AND UTILITIES PRIOR TO COMMENCEMENT OF WORK. DAMAGE TO EXISTING STRUCTURES AND UTILITIES BY THE CONTRACTOR'S OPERATIONS MUST BE REPAIRED BY THE CONTRACTOR AT HIS OWN COST.

SHOP DRAWING REVIEW

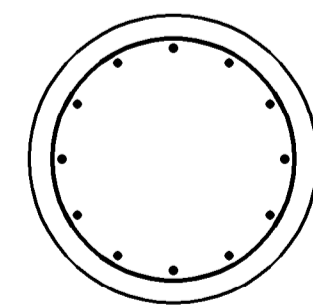
1. PREPARE AND SUBMIT ALL REQUIRED SHOP DRAWINGS FOR REVIEW 7 DAYS PRIOR TO FABRICATION.
2. THE REVIEW IS ONLY FOR THE WORK SHOWN ON THE DRAWING AND IS TO ASCERTAIN THAT THE WORK IS IN GENERAL CONFORMANCE WITH THE DRAWING.
3. THE REVIEW DOES NOT RELIEVE THE CONTRACTOR RESPONSIBILITY TO PERFORM THE WORK IN CONFORMANCE WITH THE CONTRACT DOCUMENT.

DESIGN LOAD

1. FOUNDATION HAS BEEN DESIGNED BASED ON THE SIGN DIMENSIONS.
 CLIMATIC DATA: WINNIPEG MANITOBA
 WIND LOAD 1/50 = 0.45 kPa
2. FOUNDATION IS DESIGNED BASED ON THE LOADING GIVEN BY THE SIGN DESIGNER AND THE FOLLOWING GEOTECHNICAL REPORTS
 - PRELIMINARY DESIGN GEOTECHNICAL REPORT FOR CITY OF WINNIPEG COMMUNITY RESOURCE RECOVERY CENTRES - BRADY ROAD SITE BY TREK GEOTECHNICAL ENGINEERING
 - PRELIMINARY DESIGN GEOTECHNICAL REPORT FOR CITY OF WINNIPEG COMMUNITY RESOURCE RECOVERY CENTRES - PACIFIC AVENUE SITE BY TREK GEOTECHNICAL ENGINEERING
 - EAST WINNIPEG CRRG - GEOTECHNICAL INVESTIGATION AND ASSESSMENT - REV 1 BY KGS GROUP CONSULTING ENGINEERS



CIP PILE DETAIL
1:20



CP: 762 (30") Ø x 6000 DP.
R/W 12 - 15M V.
10M @ 300 O.C. TIES
10M @ 150 O.C. TOP 3 TIES

SECTION A
1:20

BID OPPORTUNITY NO. 519-2019



| | | | |
|-------------|----------------------------------|---------------------------|-----------|
| DESIGNED BY | NR | CHECKED BY | MBL |
| DRAWN BY | DJB | APPROVED BY | NR |
| HOR. SCALE | AS SHOWN | RELEASED FOR CONSTRUCTION | |
| VERTICAL | AS SHOWN | | |
| NO. | REVISIONS | DATE | BY |
| 0 | ISSUED FOR TENDER & CONSTRUCTION | 19/09/20 | NR |
| | | DATE | SEPT 2019 |
| | | DATE | |

ENGINEER'S SEAL

CONSULTANT PROJECT NUMBER
19-1553

THE CITY OF WINNIPEG
WATER AND WASTE DEPARTMENT

Winnipeg

SUPPLY & INSTALL SOLAR POWERED PYLON ENTRANCE SIGNS AT THE 4R WINNIPEG DEPOTS

STRUCTURAL DETAILS AND NOTES

CITY DRAWING NUMBER
1-0850R-S0001-001

SHEET 1 OF 1

CONSULTANT DRAWING NUMBER
S-1