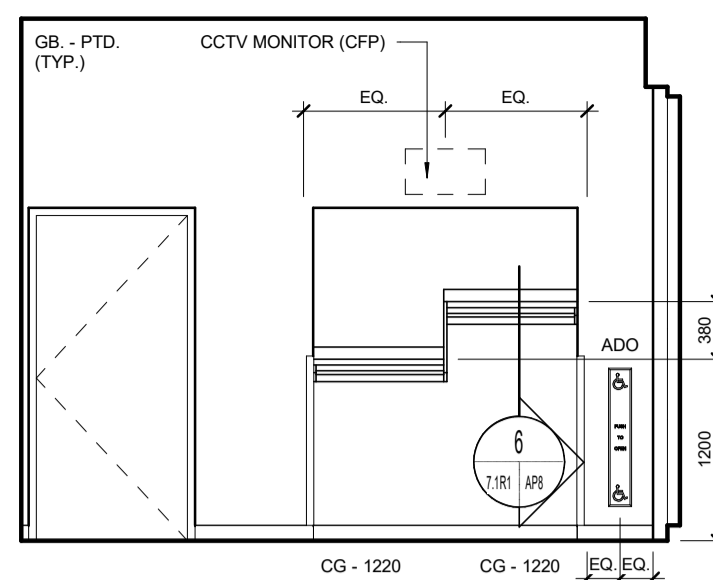
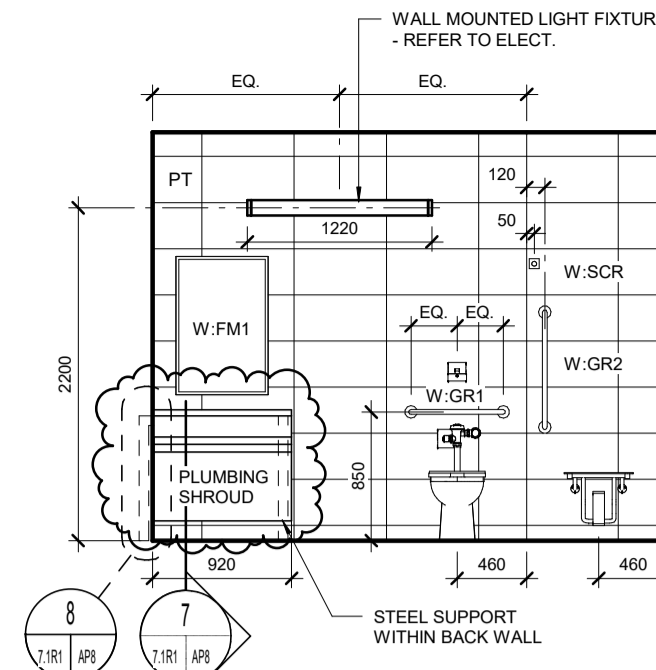


2R1
1/8" = 1'-0"
STAFF ROOM 1:08
NORTH ELEVATION

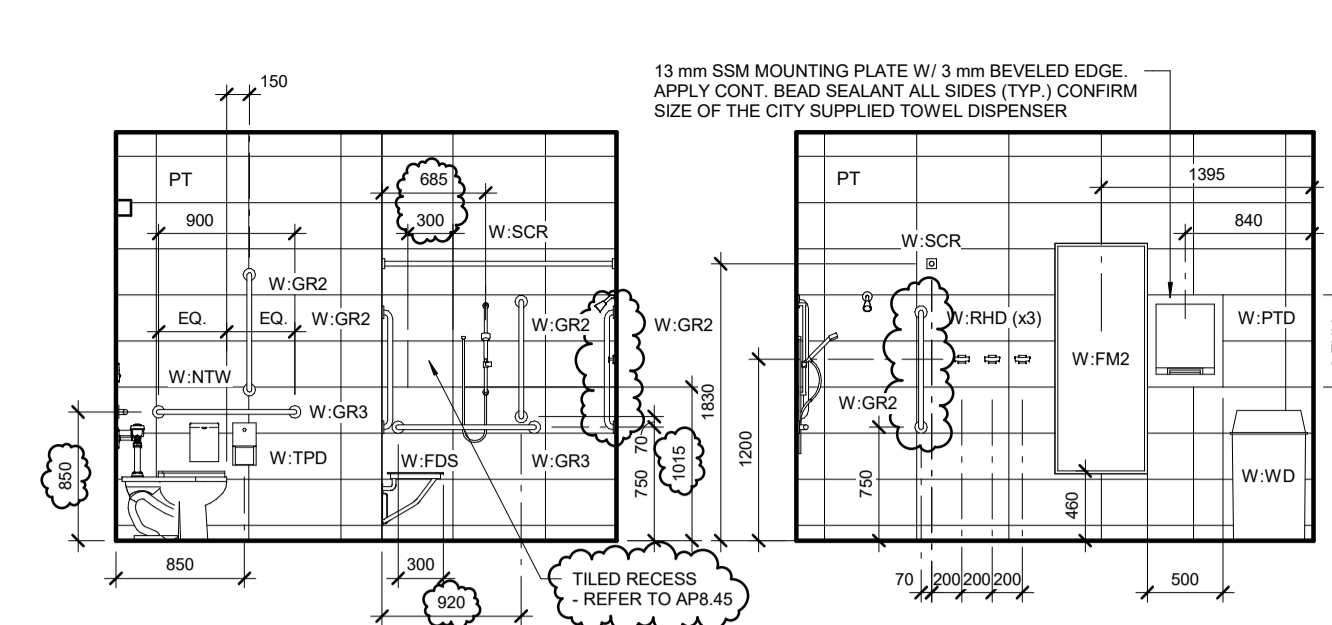
3
1/8" = 1'-0"
STAFF ROOM 1:08
EAST ELEVATION



4
1/8" = 1'-0"
STAFF ROOM 1:08
SOUTH ELEVATION

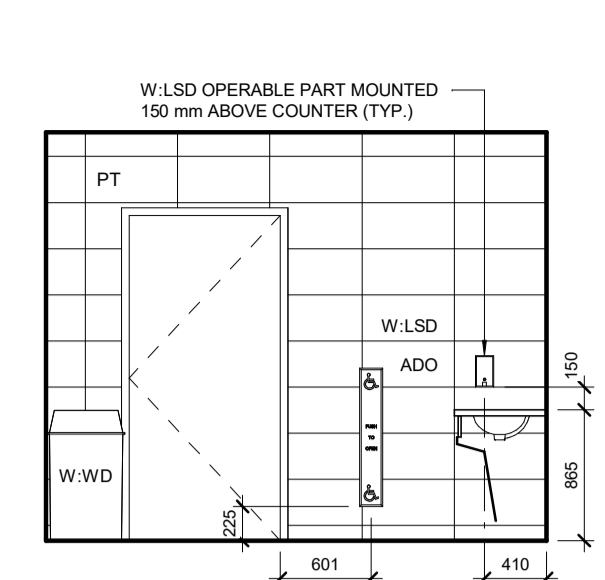


5R1
1/8" = 1'-0"
STAFF UTR 1:09
NORTH ELEVATION

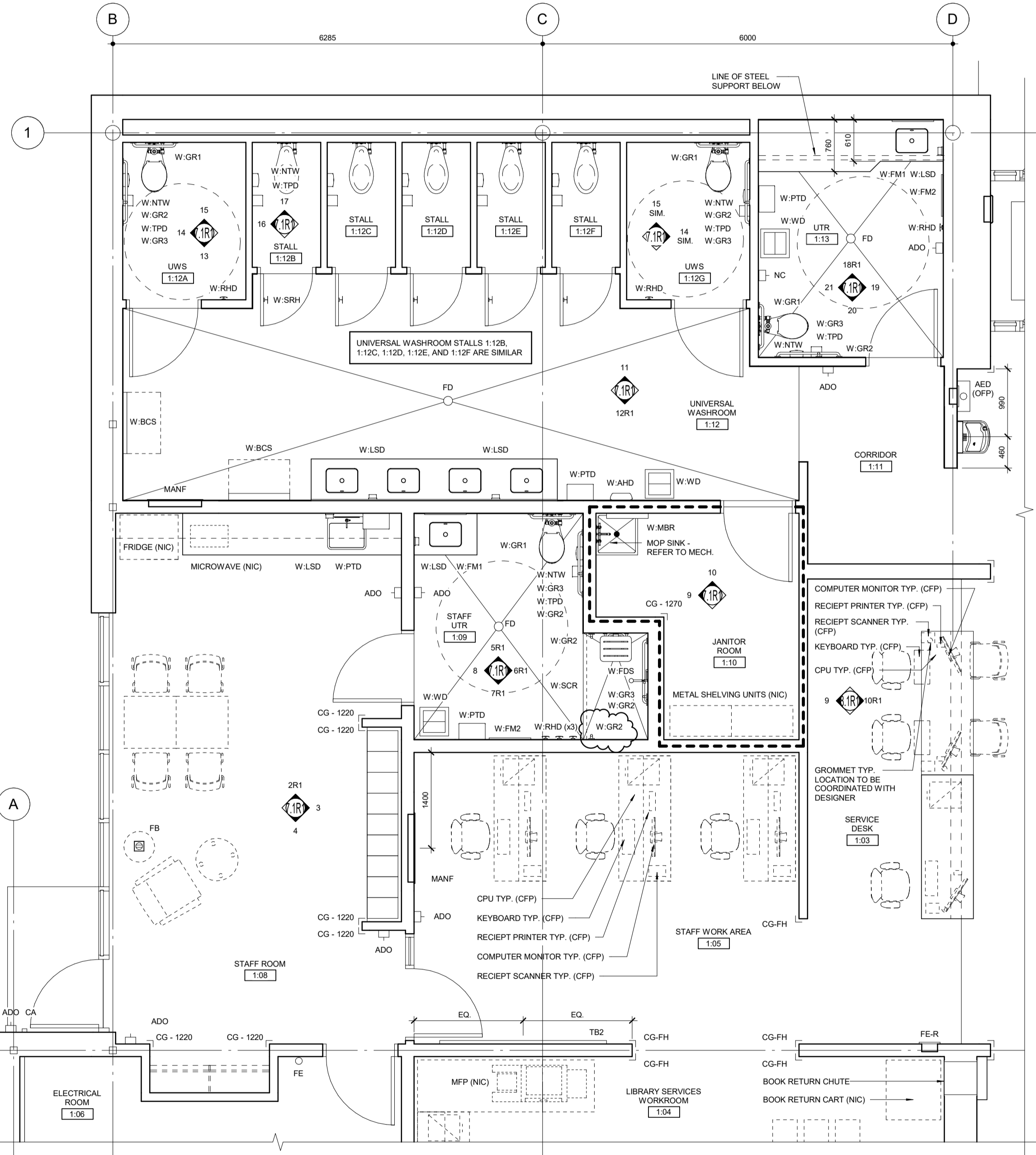


6R1
1/8" = 1'-0"
STAFF UTR 1:09
EAST ELEVATION

7R1
1/8" = 1'-0"
STAFF UTR 1:09
SOUTH ELEVATION



8
1/8" = 1'-0"
STAFF UTR 1:09
WEST ELEVATION



1R1
1/8" = 1'-0"
ENLARGED FLOOR PLAN

GENERAL NOTES:

- FURNITURE AND EQUIPMENT THAT ARE NOT IN CONTRACT (NIC) ARE INDICATED WITH A DASHED LINE AND ARE SHOWN FOR INFORMATION PURPOSES ONLY EXCEPT WHERE OTHERWISE INDICATED.
- PROVIDE WOOD BLOCKING CONCEALED IN WALL FOR ALL FURNITURE, EQUIPMENT AND ACCESSORIES MOUNTED AND/OR SECURED TO WALL. TYPICAL OF ALL IN CONTRACT. NOT IN CONTRACT (NIC) AND CITY FURNISHED PRODUCTS (CFP) CONFIRM EXACT LOCATION OF LOCKING WITH CONSULTANT PRIOR TO INSTALLATION.

ACCESSORIES LEGEND:

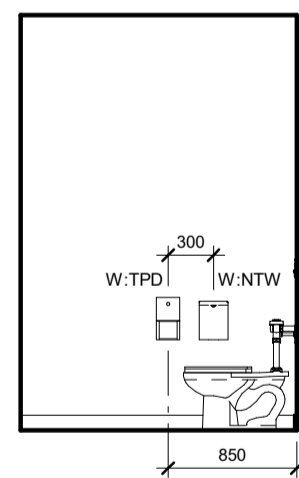
W-AHD	AIR HAND DRYER	W-NTW	NAPKINTAMPON WASTE
W-BCS	BEAUTY CHANGE STATION	W-PTD	PAPER TOWEL DISPENSER
W-FM1	FRAMED MIRROR (610x915)	W-RHD	ROBE HOOK
W-FM2	FRAMED MIRROR (610x1255)	W-SCR	SHOWER CURTAIN AND ROD
W-FSS	FOLDING SHOWER SEAT	W-SRH1	SAFETY ROBE HOOK
W-GR1	GRAB RAIL (610mm)	W-SSS	STAINLESS STEEL SHELF
W-GR2	GRAB RAIL (760mm)	W-TPD	TOILET PAPER DISPENSER
W-GR3	GRAB RAIL (915mm)	W-UM	UNFRAMED MIRROR
W-LSD	LIQUID SOAP DISPENSER	W-WD	WASTE DISPOSAL
W-MBR	MOP AND BROOM RACK		

ABBREVIATIONS:

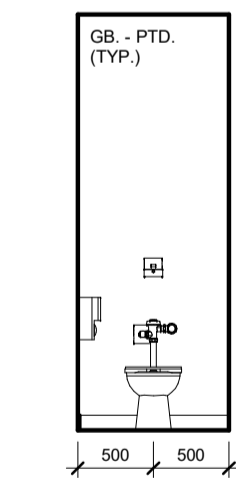
ADO	AUTOMATIC DOOR OPERATOR	NIC	NOT IN CONTRACT
CG-FH	CORNER GUARD - FULL HEIGHT	CFP	CITY FURNISHED PRODUCT
CG-(#)	CORNER GUARD - (#" HEIGHT)	PT	PORCELAIN TILE
CJ	CONTROL JOINT	SSM	RIGID VINYL WALL PROTECTION
FB	RECESSED FLOOR BOX - REFER TO ELECT.	SW	SCALD SURFACING MATERIAL
FD	FLOOR DRAIN - REFER TO MECH.	TB1	SLAT WALL (900 mm x 1450 mm)
FE	FIRE EXTINGUISHER (SURFACE MOUNTED)	TB2	TACKBOARD (1220 mm x 1220 mm)
FE (F)	FIRE EXTINGUISHER (FULLY RECESSED)	TB3	TACKBOARD (1220 mm x 2440 mm)
FE (S)	FIRE EXTINGUISHER (SEMI-RECESSED)	TR1	TYPICAL
GL	GLAZING	UNIV.	UNIVERSAL
GLWS	GLAZING WOOD CEILING SYSTEM	UNIV.	UNIVERSAL TOILET ROOM
MANF	MANIFOLD CABINET - REFER TO MECH.	UNIV.	UNIVERSAL WASHROOM STALL
MB1	MARKERBOARD (1220 mm x 1220 mm)	W	WALL MOUNT
MB2	MARKERBOARD (1220 mm x 440 mm)	W/M	WALL MOUNT
		WWS	WORLD WALL SYSTEM

NOTE: UNIVERSAL WASHROOM STALLS 1:12B, 1:12C, 1:12D, 1:12E, AND 1:12F ARE SIMILAR

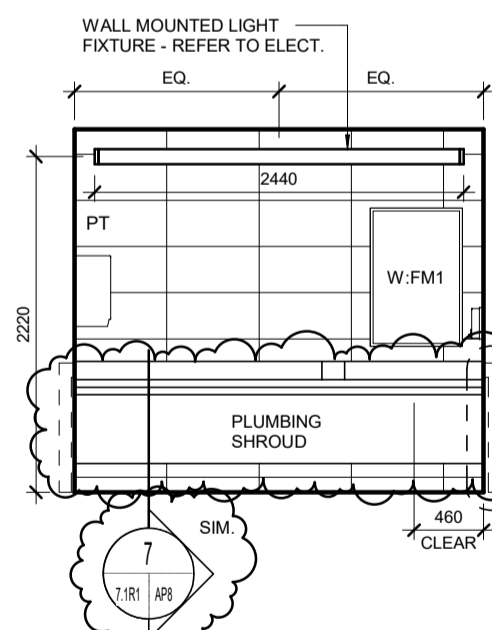
NOTE: UNIVERSAL WASHROOM STALLS 1:12B, 1:12C, 1:12D, 1:12E, AND 1:12F ARE SIMILAR



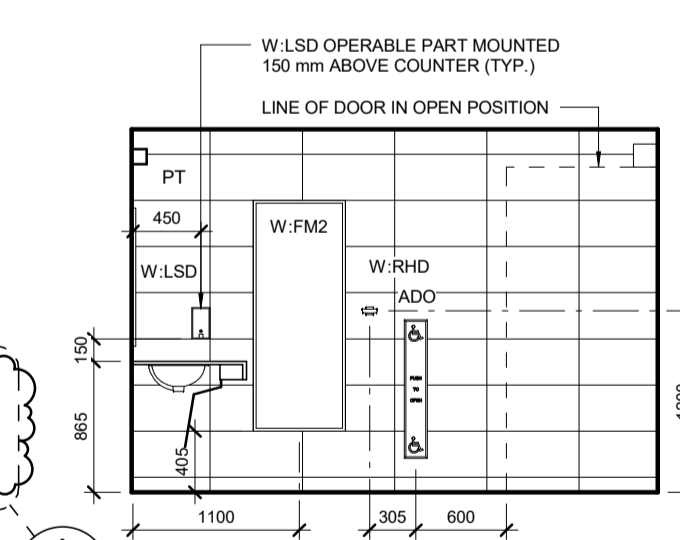
16
1/8" = 1'-0"
TYP. UNIV. STALL
WEST ELEVATION



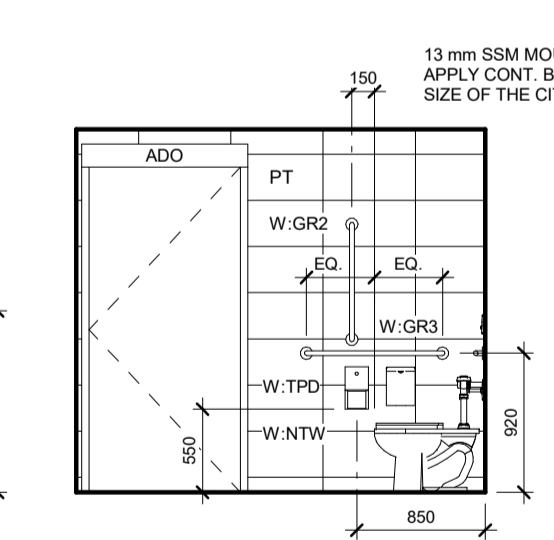
17
1/8" = 1'-0"
TYP. UNIV. STALL
NORTH ELEVATION



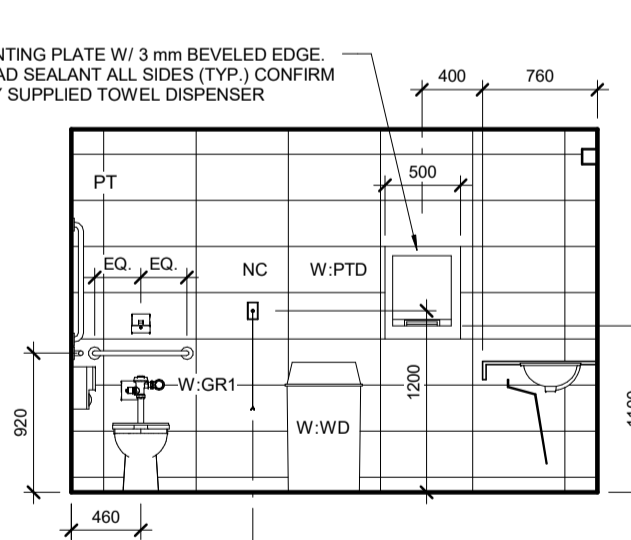
18R1
1/8" = 1'-0"
UTR 1:13
NORTH ELEVATION



19
1/8" = 1'-0"
UTR 1:13
EAST ELEVATION



20
1/8" = 1'-0"
UTR 1:13
SOUTH ELEVATION

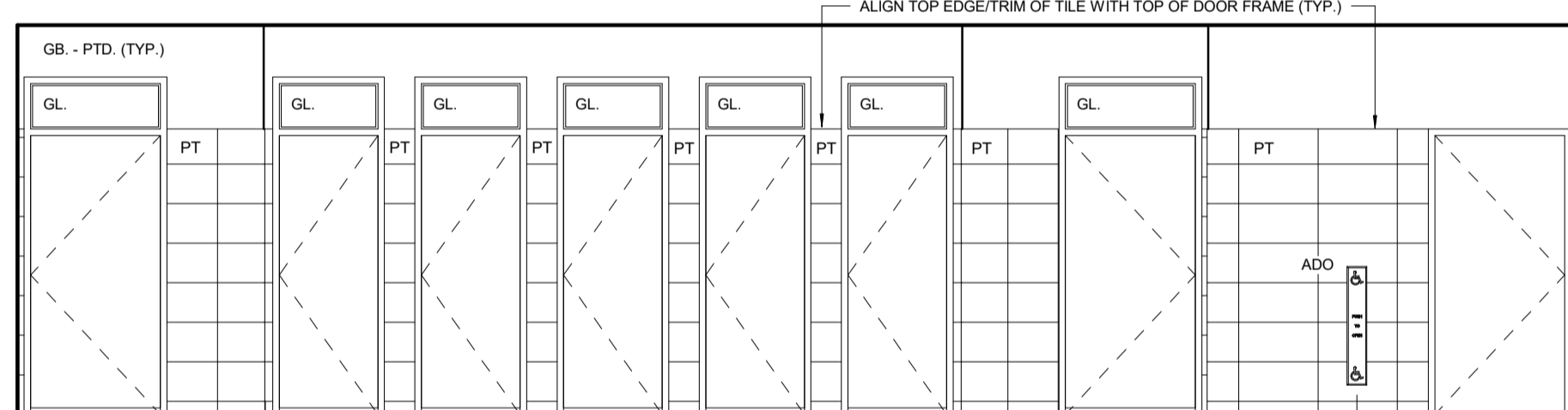


21
1/8" = 1'-0"
UTR 1:13
WEST ELEVATION

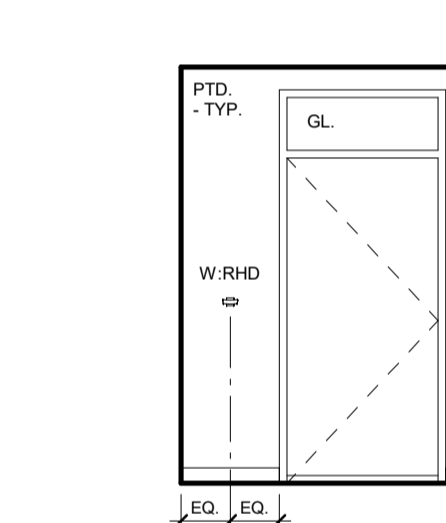
9
1/8" = 1'-0"
JANITOR ROOM 1:10
WEST ELEVATION

10
1/8" = 1'-0"
JANITOR ROOM 1:10
NORTH ELEVATION

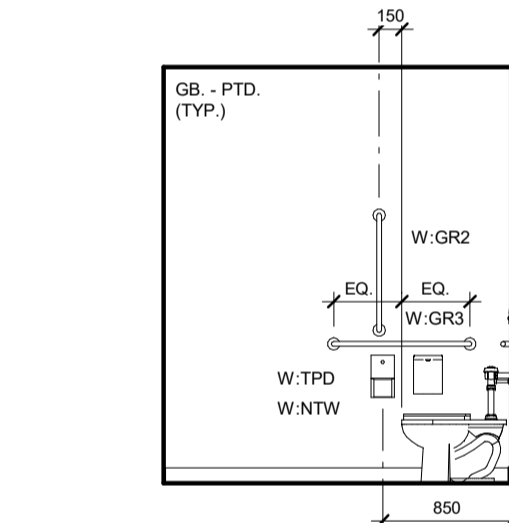
12R1
1/8" = 1'-0"
UNIVERSAL WASHROOM 1:12 - SOUTH ELEVATION



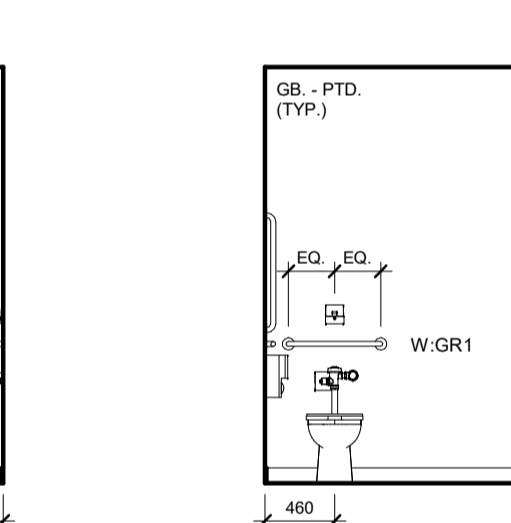
11
1/8" = 1'-0"
UNIVERSAL WASHROOM 1:12 - NORTH ELEVATION



13
1/8" = 1'-0"
UWS 1:12A
SOUTH ELEVATION



14
1/8" = 1'-0"
UWS 1:12A
WEST ELEVATION



15
1/8" = 1'-0"
UWS 1:12A
NORTH ELEVATION

No.	Date	Issue / Revision	By
6	Aug. 08, 2019	Addendum No. 01	HW
5	July 08, 2019	Issued for Construction	HW
4	June 26, 2019	Issued for 100% Pre-Tender Review	HW
3	May 13, 2019	Issued for Pre-Tender Review	HW
2	Feb. 22, 2019	Design Development Submission	CG

Drawn By: HW
Printing Date: 08.08.19

500-136 Market Ave
Winnipeg, Manitoba
Canada R3B 0P4
t: (204) 942-0681
f: (204) 943-8676
www.im-architects.com

Drawings and specifications, as instruments of service are the property of the architects. The copyright in the same being reserved to them. No reproduction may be made without the permission of the architects, and when made, must bear their names. All prints to be returned.

The contractor is to verify dimensions and data noted herein with conditions on the site and is held responsible for reporting any discrepancy to the architects for adjustment.

Winnipeg

Bill and Helen Norrie Library

Project No.: 2017-082
Tender No.: 542-2019
Address: 15 Poseidon Bay, Winnipeg, MB.

Enlarged Floor Plan & Interior Elevations

Comm. No.: 1847
Sheet: **A7.1R1**