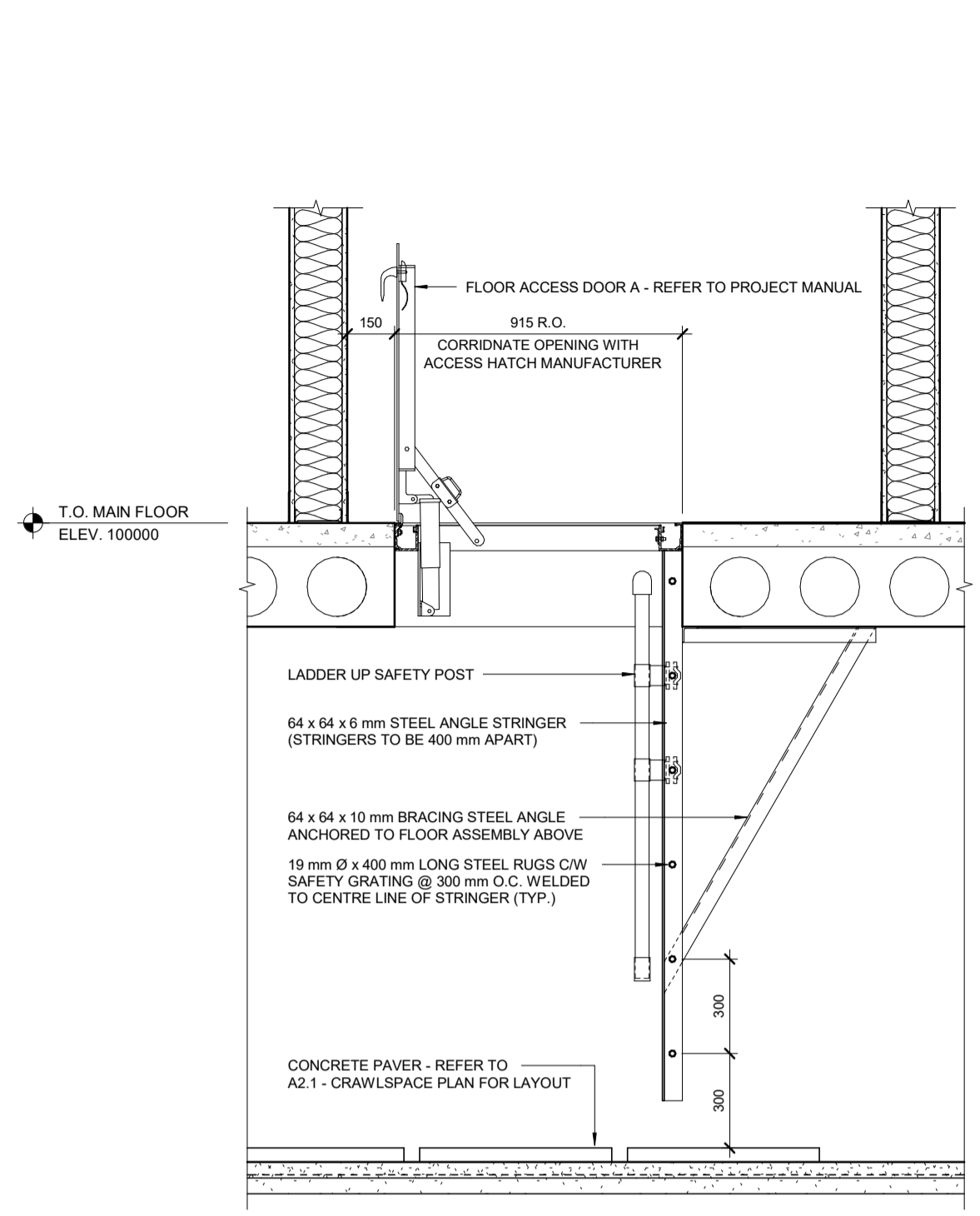
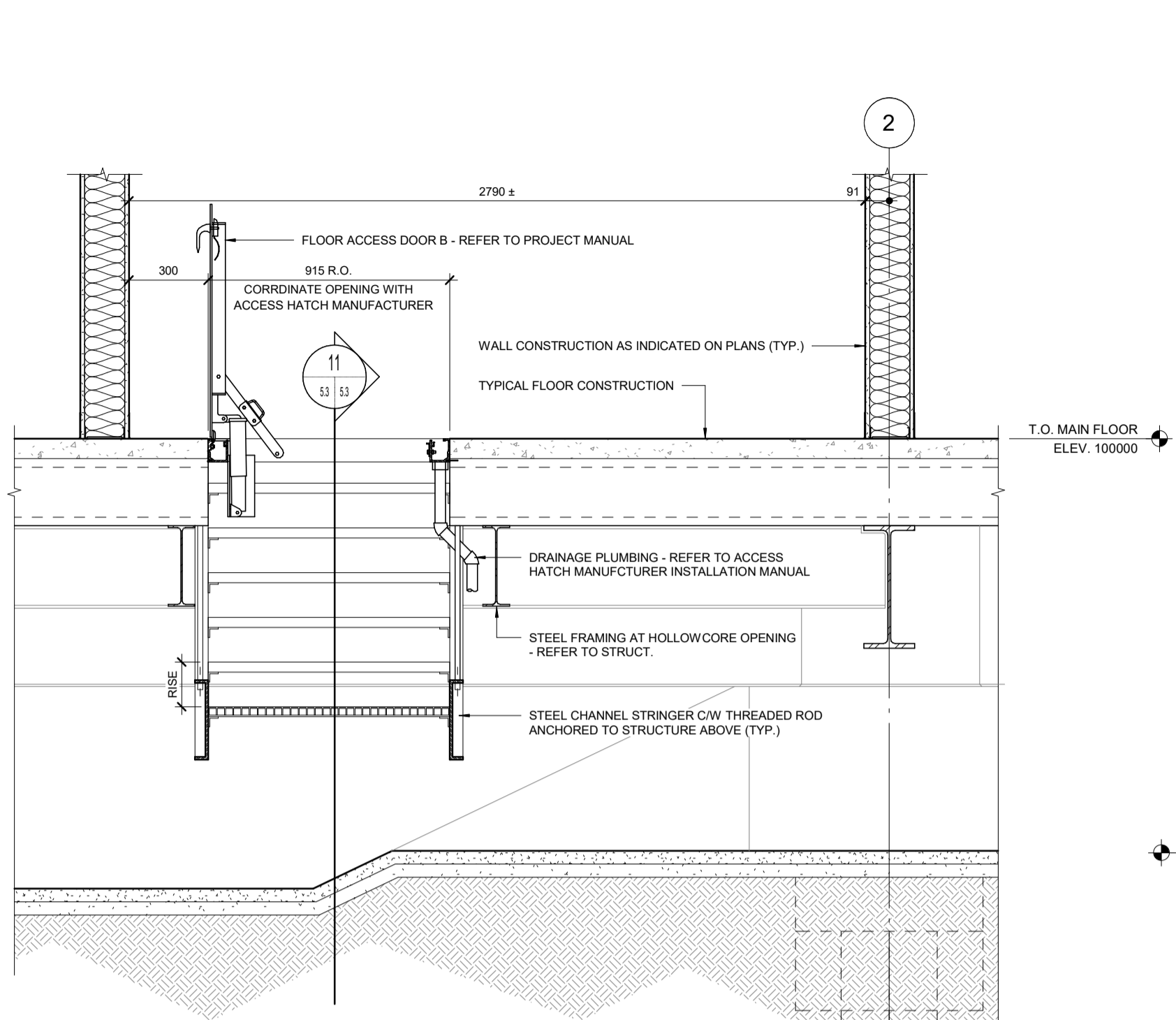


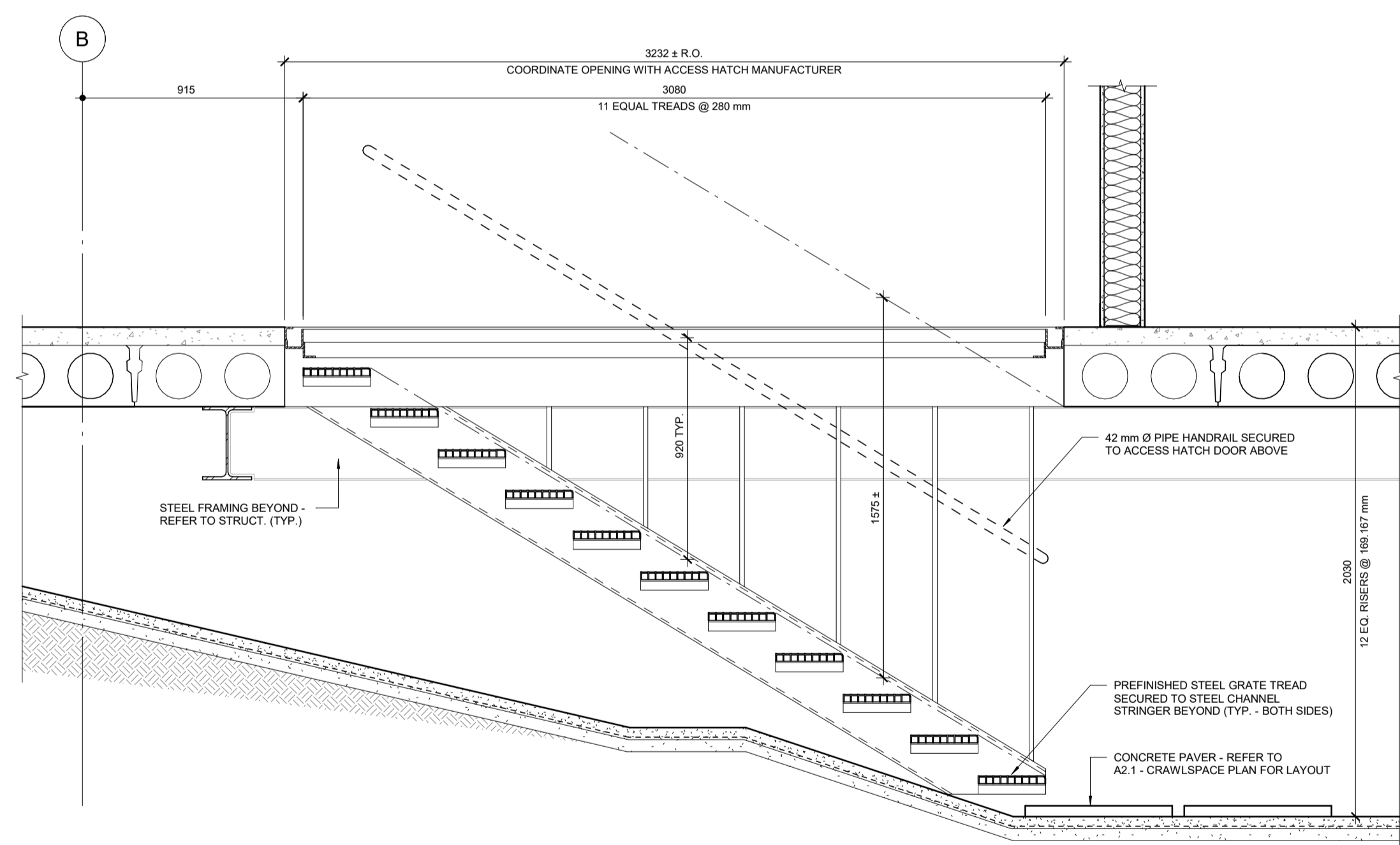
8 SECTION THRU MECH. LOUVRE
 SCALE 1:20



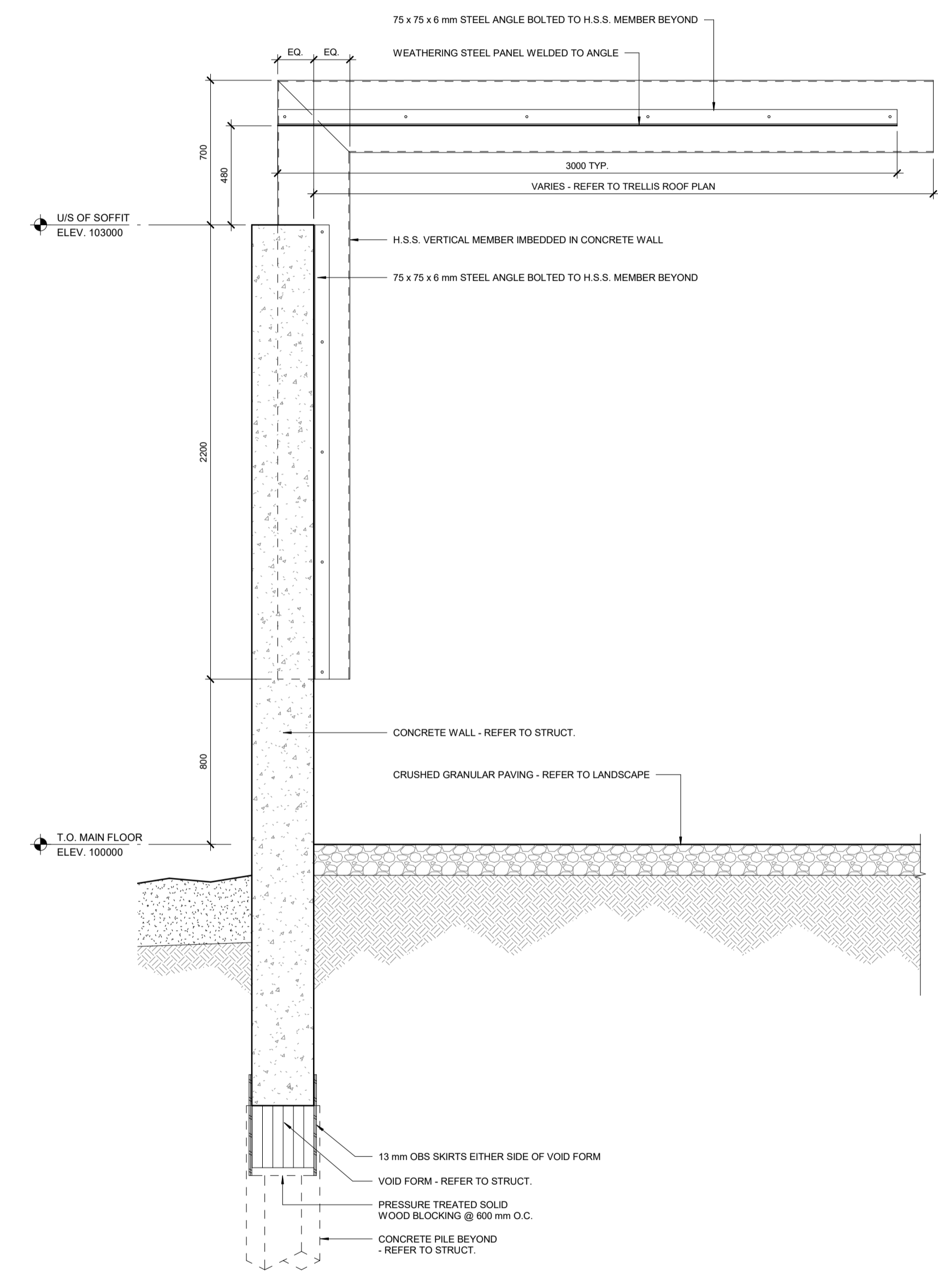
9 SECTION THRU ACCESS HATCH A
 SCALE 1:20



10 SECTION THRU ACCESS HATCH B
 SCALE 1:20



11 CRAWLSPACE STAIR SECTION
 SCALE 1:20



12 SECTION THRU TRELIS
 SCALE 1:20

5	July 08, 2019	Issued for Construction	HW
4	June 26, 2019	Issued for 100% Pre-Tender Review	HW
No.	Date	Issue / Revision	By
Drawn By: HW			
Printing Date: 07.08.19			

500-136 Market Ave
 Winnipeg, Manitoba
 Canada R3B 0P4
 t: (204) 942-0681
 f: (204) 943-8676
 www.lm-architects.com

LM LM Architectural Group



Drawings and specifications, as instruments of service are the property of the architects, the copyright in the same being reserved to them. No reproduction may be made without the permission of the architects, and when made, must bear their names. All prints to be returned.

The contractor is to verify dimensions and data noted herein with conditions on the site and is held responsible for reporting any discrepancy to the architects for adjustment.

Bill and Helen Norrie Library

Project No.: 2017-082
 Tender No.: 542-2019
 Address: 15 Poseidon Bay, Winnipeg, MB.

Miscellaneous Sections

Comm. No.: 1847

Sheet: **A5.3**