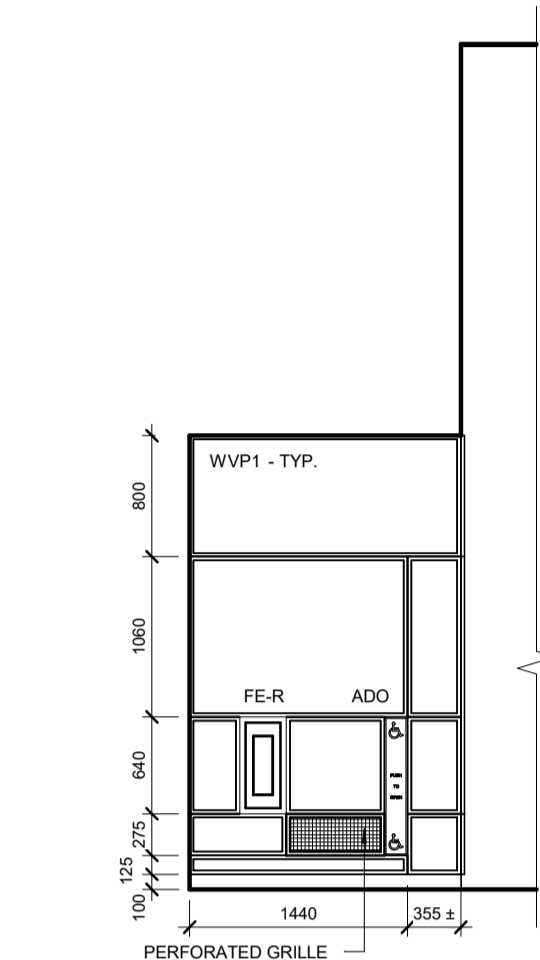
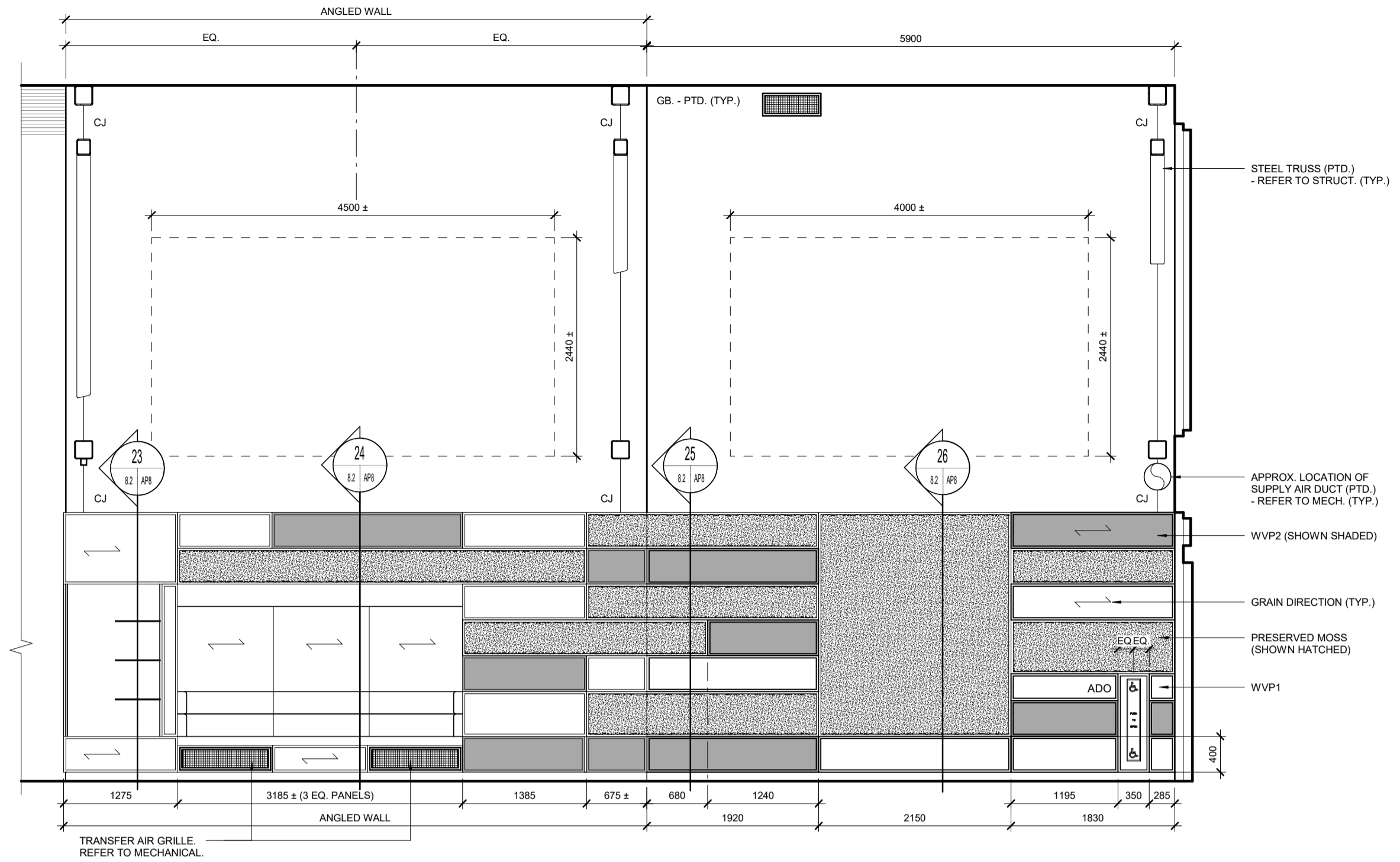


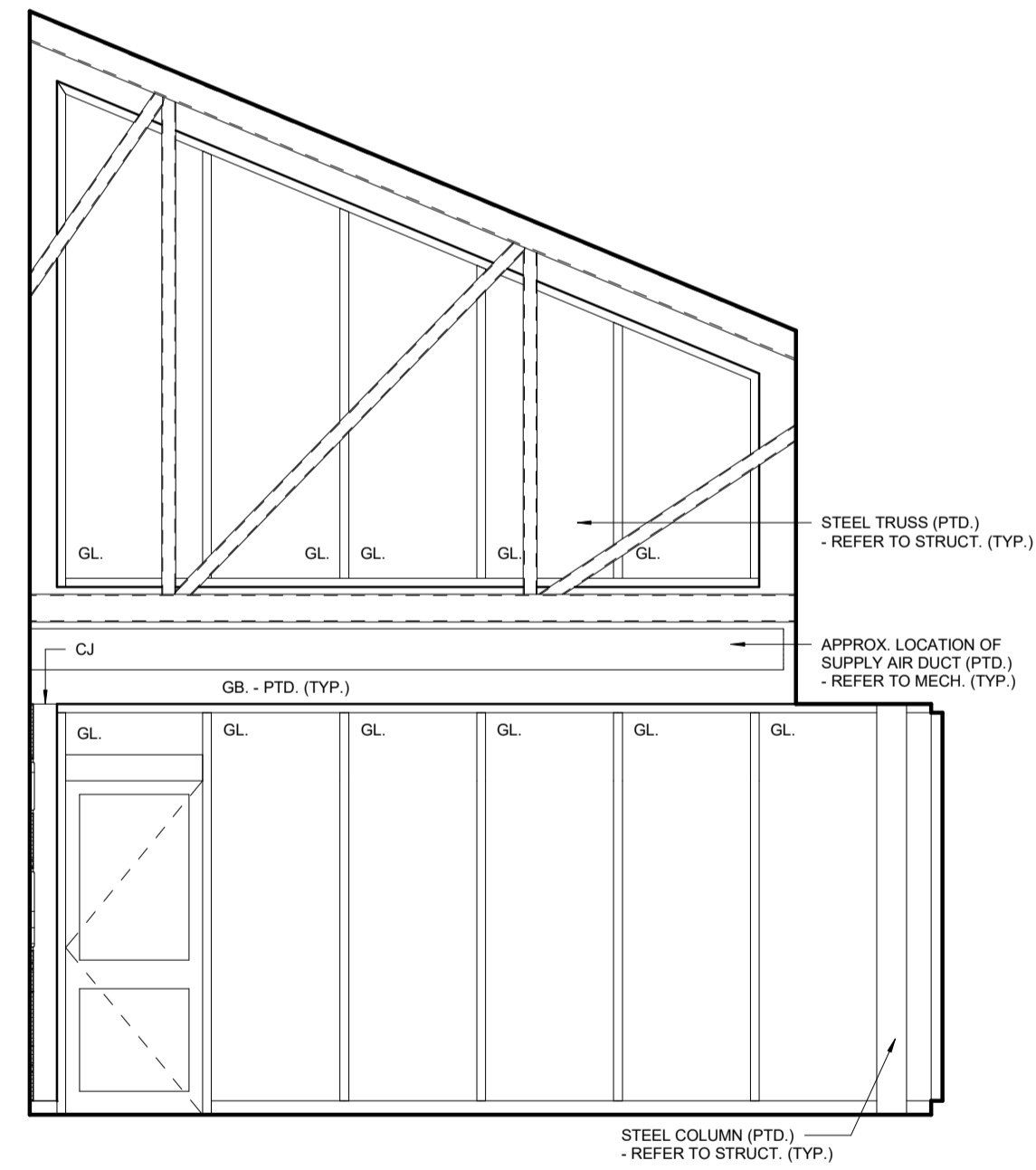
11 OPEN LIBRARY 1:18 - EAST ELEVATION  
SCALE 1:50



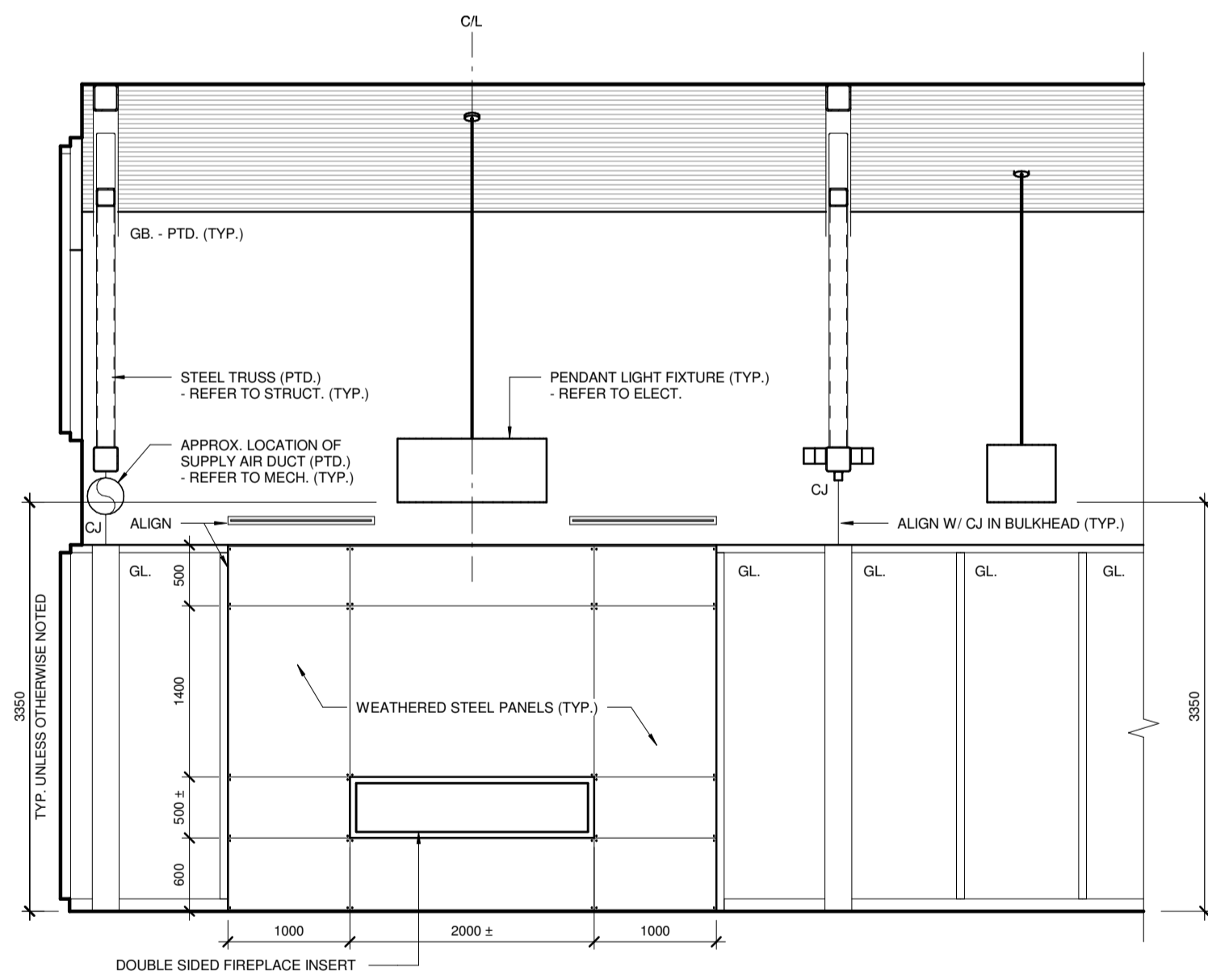
12 OPEN LIBRARY 1:18  
PARTIAL ELEVATION  
SCALE 1:50



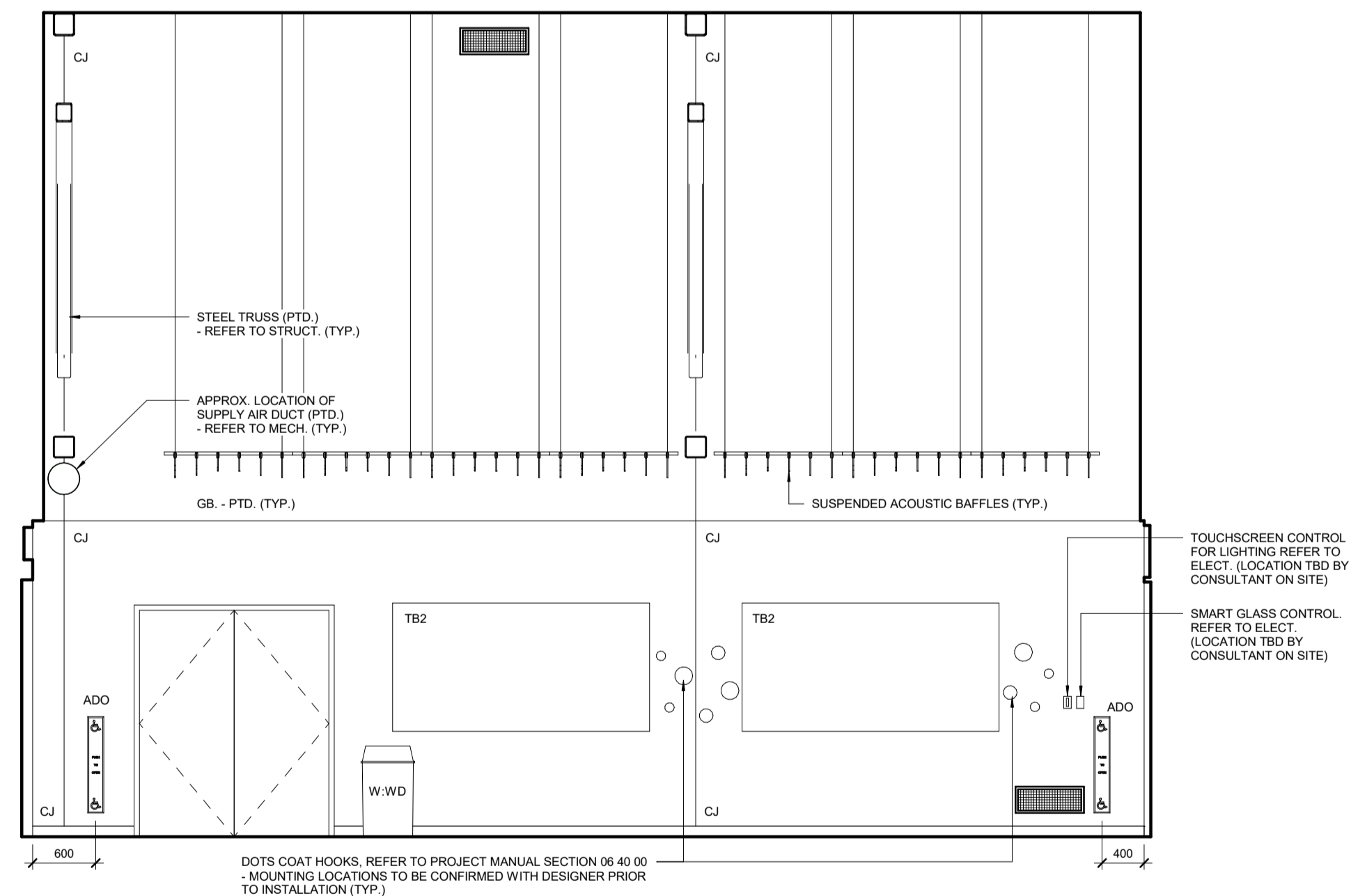
13 LIVING ROOM 1:19 - NORTH ELEVATION  
SCALE 1:50



14 LIVING ROOM 1:19 - EAST ELEVATION  
SCALE 1:50



15 LIVING ROOM 1:19 - SOUTH ELEVATION  
SCALE 1:50



16 MPR ROOM 1:20 - SOUTH ELEVATION  
SCALE 1:50

GENERAL NOTES:

- FURNITURE AND EQUIPMENT THAT ARE NOT IN CONTRACT (NIC) ARE INDICATED WITH A DASHED LINE AND ARE SHOWN FOR INFORMATION PURPOSES ONLY EXCEPT WHERE OTHERWISE INDICATED.
- PROVIDE WOOD BLOCKING CONCEALED IN WALL FOR ALL FURNITURE, EQUIPMENT AND ACCESSORIES MOUNTED AND/OR SECURED TO WALL. TYPICAL OF ALL IN CONTRACT. NOT IN CONTRACT (NIC) AND CITY FURNISHED PRODUCTS (CFT) CONFIRM EXACT LOCATION OF LOCKING WITH CONSULTANT PRIOR TO INSTALLATION.

ACCESSORIES LEGEND:

W-AHD	AIR HAND DRYER	W-NTW	NAPKIN/TAMPON WASTE
W-BCS	BABY CHANGE STATION	W-PTD	PAPER TOWEL DISPENSER
W-FM1	FRAMED MIRROR (610x915)	W-RHD	ROBE HOOK
W-FM2	FRAMED MIRROR (610x1252)	W-SCR	SHOWER CURTAIN AND ROD
W-FSS	FOLDING SHOWER SEAT	W-SRH	SAFETY ROBE HOOK
W-GR1	GRAB RAIL (610mm)	W-SSS	STAINLESS STEEL SHELF
W-GR2	GRAB RAIL (760mm)	W-TPD	TOILET PAPER DISPENSER
W-GR3	GRAB RAIL (915mm)	W-UM	UNFRAMED MIRROR
W-LSO	LIQUID SOAP DISPENSER	W-WD	WASTE DISPOSAL
W-MBR	MOP AND BROOM RACK		

ABBREVIATIONS:

ADO	AUTOMATIC DOOR OPERATOR	NIC	NOT IN CONTRACT
CG - FH	CORNER GUARD - FULL HEIGHT	OPF	CITY FURNISHED PRODUCT
CG - (FH)	CORNER GUARD - (FH = HEIGHT)	PT	PORCELAIN TILE
CJ	CONTROL JOINT	RV	RIGID VINYL WALL PROTECTION
FB	RECESSED FLOOR BOX - REFER TO ELECT.	SM	SOLID SURFACING MATERIAL
FD	FLOOR DRAIN - REFER TO MECH.	SM	SLAT WALL (900 mm x 1450 mm)
FE	FIRE EXTINGUISHER (FULLY RECESSED)	TB1	TACKBOARD (1220 mm x 1220 mm)
FE (- F)	FIRE EXTINGUISHER (FULLY RECESSED)	TB2	TACKBOARD (1220 mm x 2440 mm)
FE (- S)	FIRE EXTINGUISHER (SEMI-RECESSED)	TYP.	TYPICAL
GB	GYPSUM BOARD	UNIV.	UNIVERSAL
GL	GLAZING	UTR	UNIVERSAL TOILET ROOM
LWCS	LINEAR WOOD CEILING SYSTEM	UWS	UNIVERSAL WASHROOM STALL
MANF	MANIFOLD CABINET - REFER TO MECH.	WM	WALL MOUNT
MB1	MARKERBOARD (1220 mm x 1220 mm)	WWS	WORLD WALL SYSTEM
MB2	MARKERBOARD (1220 mm x 2440 mm)		

No.	Date	Issue / Revision	By
5	July 08, 2019	Issued for Construction	HW
4	June 26, 2019	Issued for 100% Pre-Tender Review	HW
3	May 13, 2019	Issued for Pre-Tender Review	HW
2	Feb. 22, 2019	Design Development Submission	CG

Drawn By: NE  
Printing Date: 07.08.19

500-136 Market Ave  
Winnipeg Manitoba  
Canada R3B 0P4  
t: (204) 942-0681  
f: (204) 943-8676  
www.im-architects.com

PROVINCE OF MANITOBA  
LM ARCHITECTURAL GROUP  
No. 052  
APPROVED PARTNERSHIP OF CORPORATION

PROVINCE OF MANITOBA  
DAVID J. KRESSOCK  
REGISTERED ARCHITECT  
July 5/19

Drawings and specifications, as instruments of service are the property of the architects, the copyright in the same being reserved to them. No reproduction may be made without the permission of the architects, and when made, must bear their names. All prints to be returned.

The contractor is to verify dimensions and data noted herein with conditions on the site and is held responsible for reporting any discrepancy to the architects for adjustment.

**Bill and Helen Norrie Library**

Project No.: 2017-082  
Tender No.: 542-2019  
Address: 15 Poseidon Bay, Winnipeg, MB.

**Winnipeg**

**Interior Elevations**

Comm. No.: 1847  
Sheet: **A8.2**