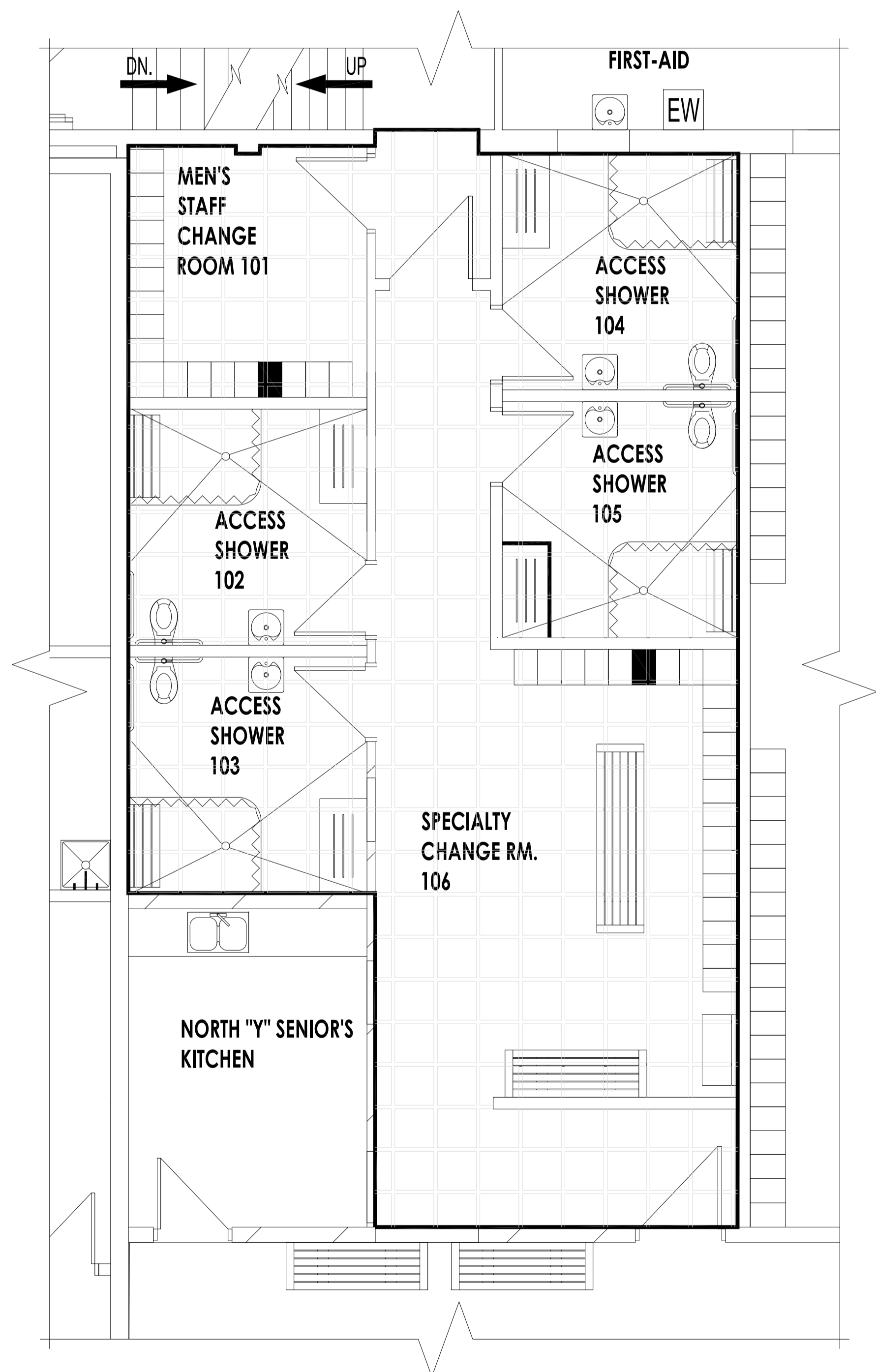


KEY PLAN
SCALE: N.T.S.



ENLARGED MAIN FLOOR PLAN
SCALE: 1/4"=1'-0"

NOTES:

1. REMOVAL AND RE-INSTALLATION OF ANY OBSTRUCTIONS ON FLOOR SURFACES (WATER CLOSETS, BENCHES, TABLES, DOOR TRANSITIONS, ETC.)
2. REMOVAL AND DISPOSAL OF EXISTING FLOORING SURFACES AND BASE IN AREAS IDENTIFIED
3. EXISTING CONCRETE SUBSTRATE PREPARATION TO ACCEPT NEW CERAMIC TILE FLOORING AND BASE (AS SPECIFIED)
4. PROVIDE REQUIRED 1:2 SLOPE TO FLOOR DRAINS
5. MODIFY HEIGHT OF DRAINS TO ATTAIN PROPER SLOPES
6. CUTTING DOWN BOTTOM OF DOORS TO ACCOMMODATE NEW FLOOR SURFACES (IF REQUIRED)
7. INITIAL CLEANING OF NEW FLOOR SURFACES
8. FINAL CLEAN UP

0	ISSUED FOR BID OPPORTUNITY	JKR	05/28/18
NO.	REVISION/DESCRIPTION	BY	DATE

SEALS

DRAWN BY	JKR	CHECKED BY	APPROVED
DATE	2018.04.10	USER	APPROVAL

CITY OF WINNIPEG
PLANNING, PROPERTY AND
DEVELOPMENT DEPARTMENT

300 - 65 GARRY ST. R3C 4K4

PROJECT

FLOORING REPLACEMENT OF SPECIALTY
CHANGE ROOM AND SHOWER ROOMS
SGT. TOMMY PRINCE PLACE

90 SINCLAIR STREET

SHEET TITLE

ENLARGED MAIN FLOOR PLAN

SCALE	PROJECT NO.	SHEET NO.
AS SHOWN	2018-032	A1