

TRAVERSE AVENUE - WEST

TRAVERSE AVENUE - EAST

CONSTRUCTION NOTES:

1. ALL WORK AND MATERIALS TO BE IN ACCORDANCE WITH LATEST REVISION OF THE CITY OF WINNIPEG STANDARD CONSTRUCTION SPECIFICATIONS.
2. ISOLATE MISCELLANEOUS ITEMS IN NEW CONCRETE WORKS AS PER SD-228C.
3. LEGAL PLAN AND UNDERGROUND INFORMATION FROM CITY OF WINNIPEG LBIS. CONTRACTOR TO VERIFY ALL UNDERGROUNDS IN THE FIELD.
4. CONTRACTOR TO TAKE PRECAUTIONARY STEPS TO AVOID DAMAGE FROM CONSTRUCTION ACTIVITIES TO TREES WITHIN THE LIMITS OF CONSTRUCTION.
5. LOCATION OF EXISTING SERVICES TO BE CONFIRMED IN THE FIELD BY THE CONTRACTOR.
6. CB LEADS TO BE INSTALLED AT MIN. 1.0% SLOPE OR AS DIRECTED BY CONTRACT ADMINISTRATOR.
7. LIMITS OF CURB AND SIDEWALK RENEWAL TO BE FINALIZED IN THE FIELD BY THE CONTRACT ADMINISTRATOR.
8. LIMITS OF BOULEVARD GRADING TO BE FINALIZED IN THE FIELD BY THE CONTRACT ADMINISTRATOR.
9. ADJUST ALL WATER VALVES, MANHOLES, CATCH BASINS AND CATCH PITS TO GRADE.
10. PAVEMENT REPAIRS SHOWN ARE ONLY REPRESENTATIVE APPROXIMATION OF TENDERED QUANTITIES.
11. ALL PRIVATE WALKWAYS TO BE ADJUSTED TO NEW SIDEWALK OR TOP OF CURB ELEVATION, AS REQUIRED.
12. MODIFIED BARRIER CURB TO BE CONSTRUCTED AT ALL INTERSECTION RADII AND BACK LANE RADII.
13. LAMP STANDARDS, HYDRO POLES AND ANCHORS THAT REQUIRE TEMPORARY SUPPORT, REMOVAL OR REPLACEMENT, TO BE DONE SO AT THE EXPENSE OF THE CONTRACTOR, AS NECESSARY.
14. CONTRACTOR TO CONFIRM LOCATION AND LIMITS OF SEWER REPAIRS BY PERFORMING VIDEO INSPECTION AND REVIEWING WITH THE CONTRACT ADMINISTRATOR PRIOR TO CONSTRUCTION.
15. HAND OR SOFT DIG METHODS REQUIRED OVER GAS UTILITIES AT INTERVALS DETERMINED BY M.B. HYDRO
16. NO WORKS, INCLUDING CONCRETE CUTTING OR BREAKING TO BE UNDERTAKEN NEAR GAS LINES UNTIL DEPTH OF COVER IS DETERMINED AND A MANITOBA HYDRO SAFETY WATCH REPRESENTATIVE IS ON SITE.
17. NO VIBRATORY COMPACTIN PERMITTED WITHIN 1M OF GAS MAINS.
18. CONTRACTOR TO FOLLOW ALL MANITOBA HYDRO REGULATIONS FOR WORK AROUND GAS LINES.

ABBREVIATIONS:

CONC	CONCRETE ROADWAY
ASP	ASPHALT ROADWAY
ASP OVLY	ASPHALT OVERLAY ROADWAY
GRAN	GRANULAR ROADWAY
PVS	PAVING STONE/BRICK
CSW	CONCRETE SIDEWALK
ASW	ASPHALT SIDEWALK
CSW	GRANULAR SIDEWALK
TYP	TYPICAL
EX	EXISTING
MH	MANHOLE
WV	WATER VALVE
EL	ELEVATION
CB	CATCH BASIN
CP	CATCH PIT
CI	CURB INLET
CL	CONTROL LINE

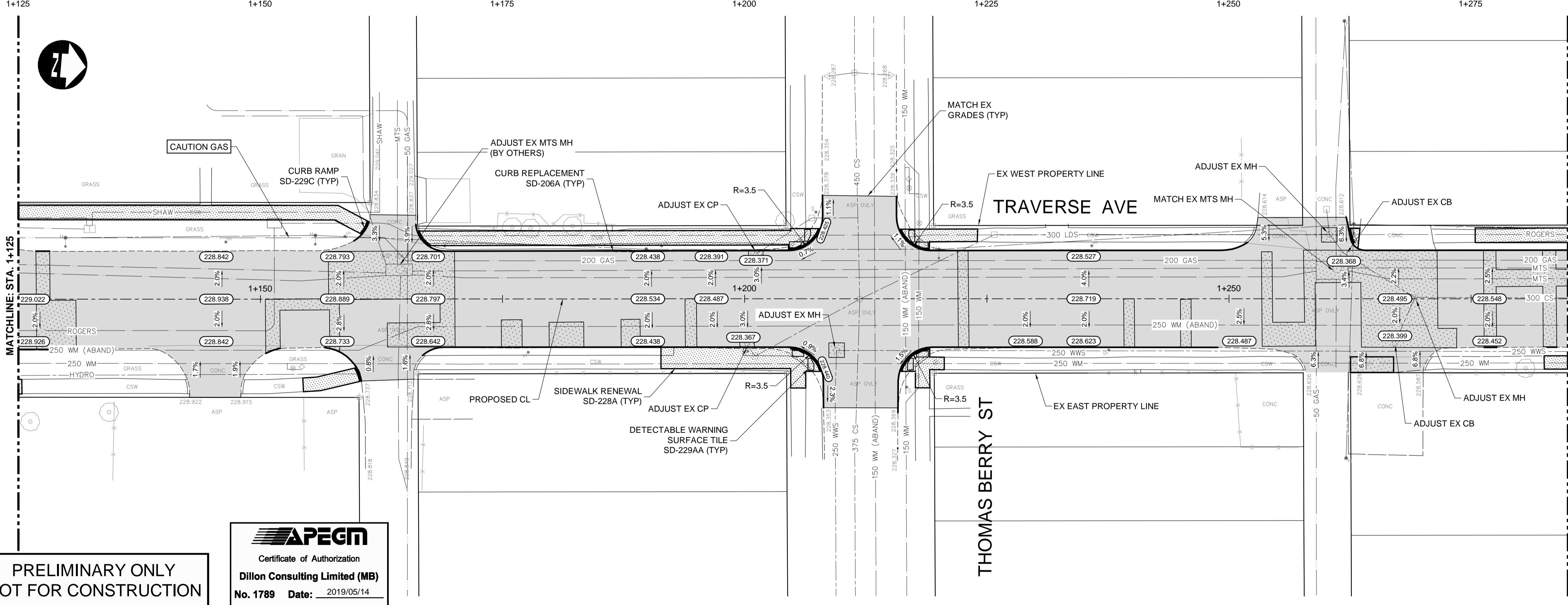
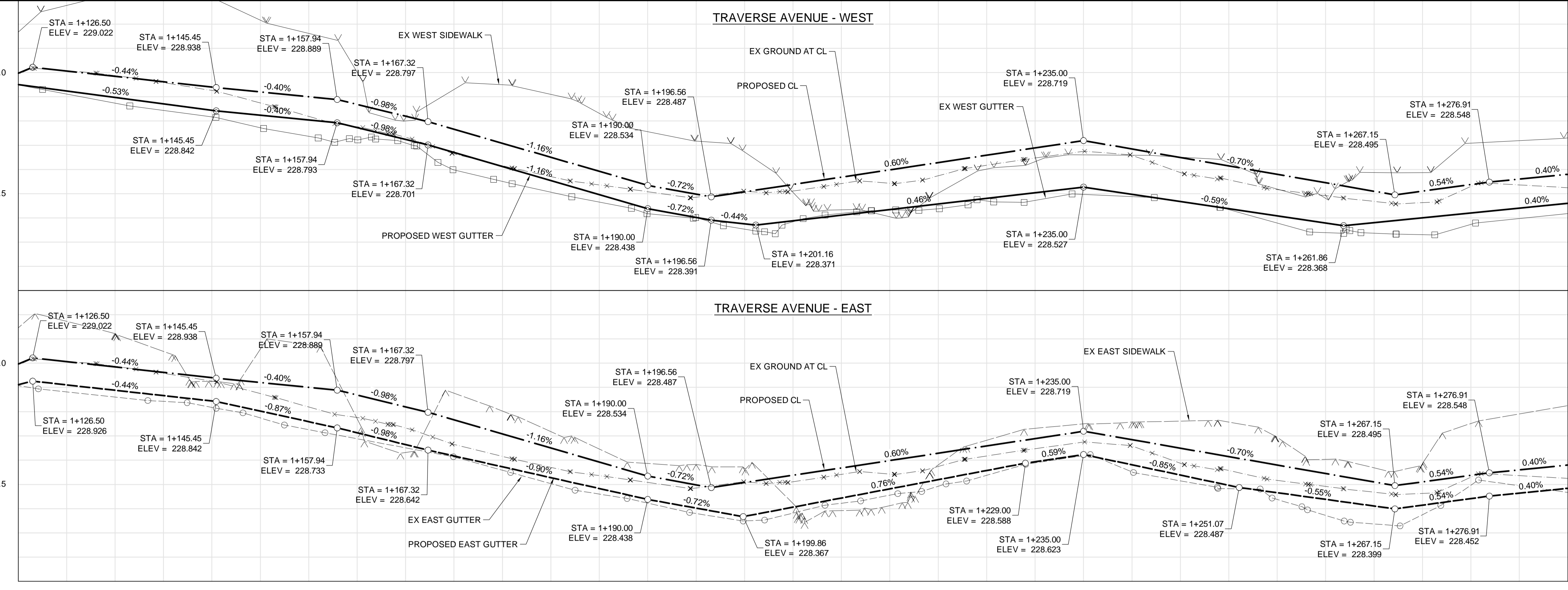
METRIC

WHOLE NUMBERS INDICATE MILLIMETRES  
DECIMALIZED NUMBERS INDICATE METRES

WARNING

IF POWER EQUIPMENT OR EXPLOSIVES ARE TO BE USED FOR EXCAVATION ON THIS PROJECT THE CONTRACTOR MUST:

1. NOTIFY THE GAS COMPANY OF THE PROPOSED LOCATION OF EXCAVATION.
2. TAKE PRECAUTION TO AVOID DAMAGE TO GAS COMPANY INSTALLATIONS SEE PROVINCIAL REGULATION 210/72 FOR DETAILS.
3. OBTAIN EXCAVATION PERMITS PRIOR TO CONSTRUCTION.



**PRELIMINARY ONLY  
NOT FOR CONSTRUCTION**

**APEGM**  
Certificate of Authorization  
Dillon Consulting Limited (MB)  
No. 1789 Date: 2019/05/14

HYDRANT	CONCRETE	WATERMAIN
VALVE	ASPHALT	LAND DRAINAGE SEWER
MANHOLE	SIDEWALK	WASTE WATER SEWER
CATCH BASIN	PAVING STONES	HYDRANT
CATCH PIT	PAVEMENT REPAIR FABRIC	VALVE
150 WM	PROPERTY LINE	150 WM
300 LDS	ELEVATION	300 LDS
250 WWS	TRAFFIC SIGNAL	250 WWS
HYDRO	SURVEY BAR	HYDRO
M.T.S.	CURB RAMP	M.T.S.
100 GAS	DETECTABLE TILE	100 GAS
EXISTING	LEGEND-PLAN	PROPOSED
LEGEND-PLAN	PROPOSED	EXISTING
LEGEND-PROFILE	PROPOSED	EXISTING
LEGEND-PROFILE	PROPOSED	EXISTING

DESIGNED BY	TJH
DRAWN BY	TJH
CHECKED BY	RTP
APPROVED BY	BC
HOR. SCALE	1:250
VERTICAL	1:10
ISSUED FOR TENDER	19/05/14
NO. REVISIONS	DATE BY

**DILLON CONSULTING**

RELEASSED FOR CONSTRUCTION

DATE

ENGINEER'S SEAL  
PROVINCE OF MANITOBA  
STAMPED BY  
S.B. COOK  
2019/05/14  
REGISTERED PROFESSIONAL ENGINEER

CONSULTANT PROJECT NUMBER  
18-8858

**THE CITY OF WINNIPEG  
PUBLIC WORKS DEPARTMENT**

2019 LOCAL STREETS RENEWAL PROGRAM  
TRAVERSE AVENUE, HAMEL AVENUE, FLYNN STREET, AND VARIOUS OTHER LOCATIONS

CITY DRAWING NUMBER

SHEET 03 OF 20

CONSULTANT DRAWING NUMBER

TRAVERSE AVENUE - PLAN-PROFILE  
(STA. 1+125 TO 1+285)