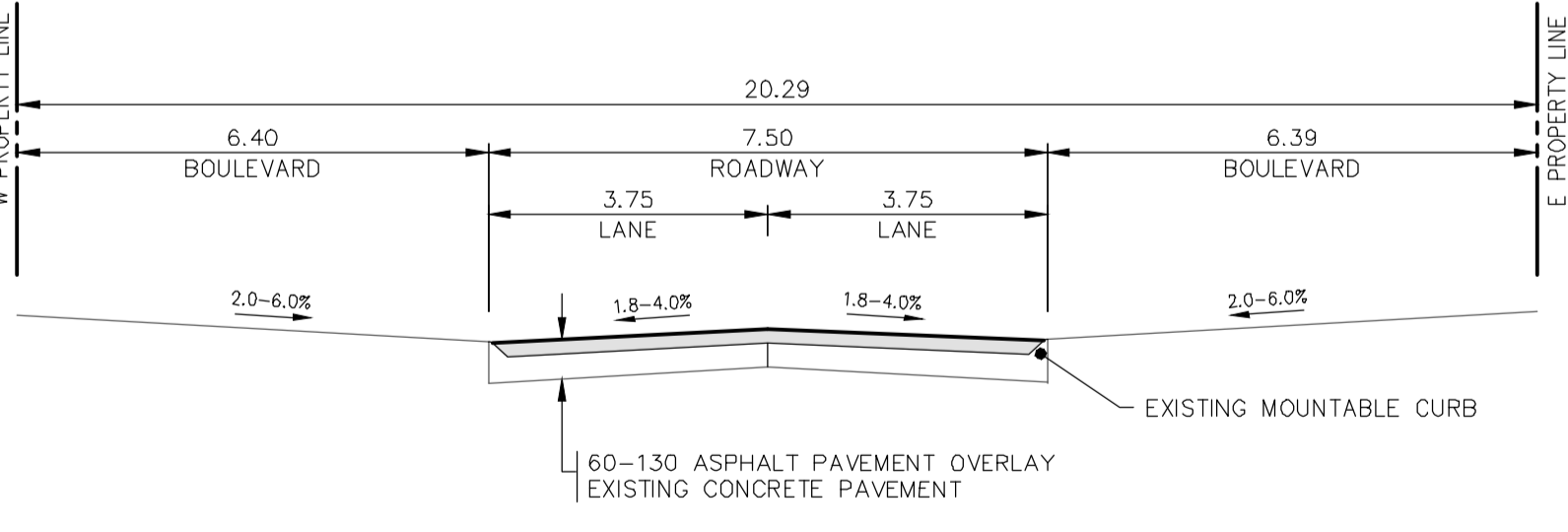


- NOTES:
1. ALL WORK AND MATERIALS TO BE IN ACCORDANCE WITH THE LATEST REVISION OF THE CITY OF WINNIPEG STANDARD CONSTRUCTION SPECIFICATIONS.
  2. CONTRACTOR TO CONFIRM THE LOCATION OF ALL UTILITIES/SERVICES IN THE FIELD PRIOR TO CONSTRUCTION.
  3. ALL ROADWAY DIMENSIONS SHOWN ARE TO BACK OF CURB.
  4. RENEW CURB AND SIDEWALK AS IDENTIFIED BY CONTRACT ADMINISTRATOR.
  5. ALL PRIVATE WALKWAYS TO BE ADJUSTED TO NEW SIDEWALK OR TOP OF CURB ELEVATION, AS IDENTIFIED BY THE CONTRACT ADMINISTRATOR.
  6. ADJUST MH FRAMES, GB RIMS, AND VALVES TO NEW GRADES, AS REQUIRED.
  7. MODIFIED BARRIER CURB TO BE CONSTRUCTED AT ALL INTERSECTION RADII AND BACK LANE RADII.
  8. LAMP STANDARDS, HYDRO POLES, AND ANCHORS THAT REQUIRE TEMPORARY SUPPORT, REMOVAL OR REPLACEMENT, TO BE DONE SO AT THE EXPENSE OF THE CONTRACTOR AS NECESSARY.
  9. CONTRACTORS TO TAKE PRECAUTIONARY STEPS TO PROTECT EXISTING TREES WITHIN THE LIMITS OF CONSTRUCTION FROM DAMAGE FROM CONSTRUCTION ACTIVITIES AS OUTLINED IN THE SPECIFICATIONS.
  10. ALL BOULEVARDS TO BE SODDED UNLESS OTHERWISE NOTED.
  11. ADJUST ALL WATER VALVES, HYDRANTS, MANHOLES, AND CATCH BASINS IN WORK AREA TO GRADE.



EXISTING	LEGEND-PLAN	PROPOSED	EXISTING	LEGEND-PLAN	PROPOSED	EXISTING	LEGEND-PROFILE	PROPOSED
---	WATER MAIN	---	---	IRON BAR	---	---	---	---
---	LAND DRAINAGE SEWER	---	---	HYDRO POLE & LIGHT STANDARD	---	---	---	---
---	WASTE WATER SEWER	---	---	LIGHT STANDARD OR TRAFFIC SIGNAL	---	---	---	---
---	HYDRO	---	---	HYDRO POLE	---	---	---	---
---	M.T.S.	---	---	CURB RAMP	---	---	---	---
---	GAS	---	---	DETECTABLE WARNING SURFACE TILE	---	---	---	---
---	SIGNALS	---	---	EDGE OF SIDEWALK	---	---	---	---
○	MANHOLE	●	---	FENCE	---	---	---	---
□	CATCH BASIN	■	---	PROPERTY LINE	---	---	---	---
△	CURB INLET	▽	---	EDGE OF ASPHALT	---	---	---	---
○	UTILITIES ADJUSTED	△ □ ○	---	EDGE OF CONCRETE	---	---	---	---
⌋	PLUG	⌋	---	MODIFIED BARRIER CURB	---	---	---	---
⊕	HYDRANT	⊕	---	BARRIER CURB	---	---	---	---
⊗	VALVE	⊗	---	BARRIER CURB AND GUTTER	---	---	---	---
⊙	CURB STOP	⊙	---	CONC SIDEWALK	---	---	---	---
230.99	GROUND GRADE	---	---	CONCRETE SLAB	---	---	---	---
(31.00)	PAVEMENT GRADE	(31.00)	---	ASPHALT	---	---	---	---
→	ANCHOR	→	---	MILLED SURFACE	---	---	---	---
#111	CIVIC ADDRESS	---	---	PAVEMENT REPAIR FABRIC	---	---	---	---
---	EXISTING	---	---	ROADWAY CENTRELINE	---	---	---	---
---	---	---	---	WEST GUTTER	---	---	---	---
---	---	---	---	EAST GUTTER	---	---	---	---

LOCATIONS APPROVED UNDERGROUND STRUCTURES

SIGNED BY: \_\_\_\_\_ DATE: \_\_\_\_\_

LOCATION OF UNDERGROUND STRUCTURES AS SHOWN ARE BASED ON THE BEST INFORMATION AVAILABLE BUT NO GUARANTEE IS GIVEN THAT ALL EXISTING UTILITIES ARE SHOWN OR THAT THE GIVEN LOCATIONS ARE EXACT CONFIRMATION OF EXISTENCE AND EXACT LOCATION OF ALL SERVICES MUST BE OBTAINED FROM THE INDIVIDUAL UTILITIES BEFORE PROCEEDING

NO.	REVISIONS	DATE	BY
A	PRELIMINARY DESIGN REVIEW	20190205	K.G.
B	DETAILED DESIGN REVIEW	20190502	R.H.

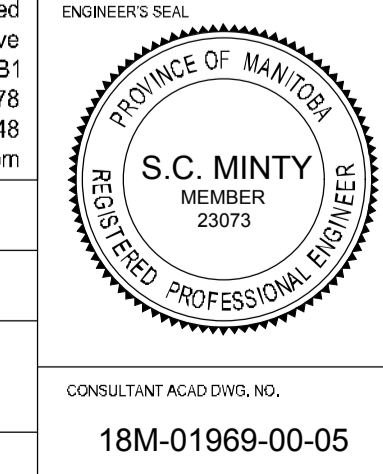
WSP Canada Group Limited  
Suite 111 - 93 Lombard Ave  
Winnipeg, MB R3B 3B1  
t. 204.943.3178  
f. 204.943.4948  
www.wsp.com

DESIGNED BY: K.G./L.V. CHECKED BY: V.M.  
DRAWN BY: S.B. APPROVED BY: S.M.

HOR. SCALE: 1:250  
VERTICAL: 1:10

ISSUED FOR TENDER: 20190502 R.H.  
RELEASED FOR CONSTRUCTION: 20190205 K.G.

NO. REVISIONS DATE BY



FOR TENDER PURPOSES ONLY  
NOT FOR CONSTRUCTION

THE CITY OF WINNIPEG  
PUBLIC WORKS DEPARTMENT  
ENGINEERING SERVICES DIVISION

2019 STREET RENEWAL PROGRAM  
MAUREEN STREET  
PAVEMENT REHABILITATION  
STA. 2+15 TO STA. 3+35

Winnipeg

CONSULTANT ACAD/DWG. NO.  
18M-01969-00-05

CITY DRAWING NUMBER  
SHEET 05 OF 13

BID NO.  
59-2019

METRIC  
WHOLE NUMBERS INDICATE MILLIMETRES  
DECIMALIZED NUMBERS INDICATE METRES

ENGINEERS  
GEOSCIENTISTS  
MANITOBA  
Certificate of Authorization  
WSP Canada Group Limited  
No. 6657

May 06, 2019 - 3:15pm  
 P:\2018\18M-01969-00 - 2019 Local Streets Package-19-R-03\Contract 1\10 Drawings\03 Working Drawings\18M-01969-Maureen St Plan&Profile.dwg - Job:59-2019\_Drawing\_18M-01969-00-05-RC