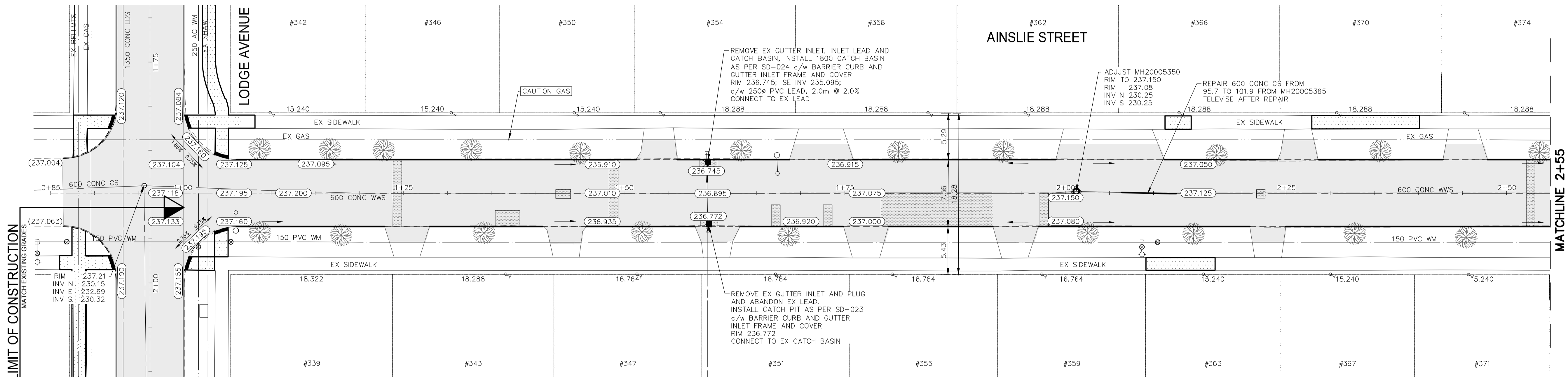
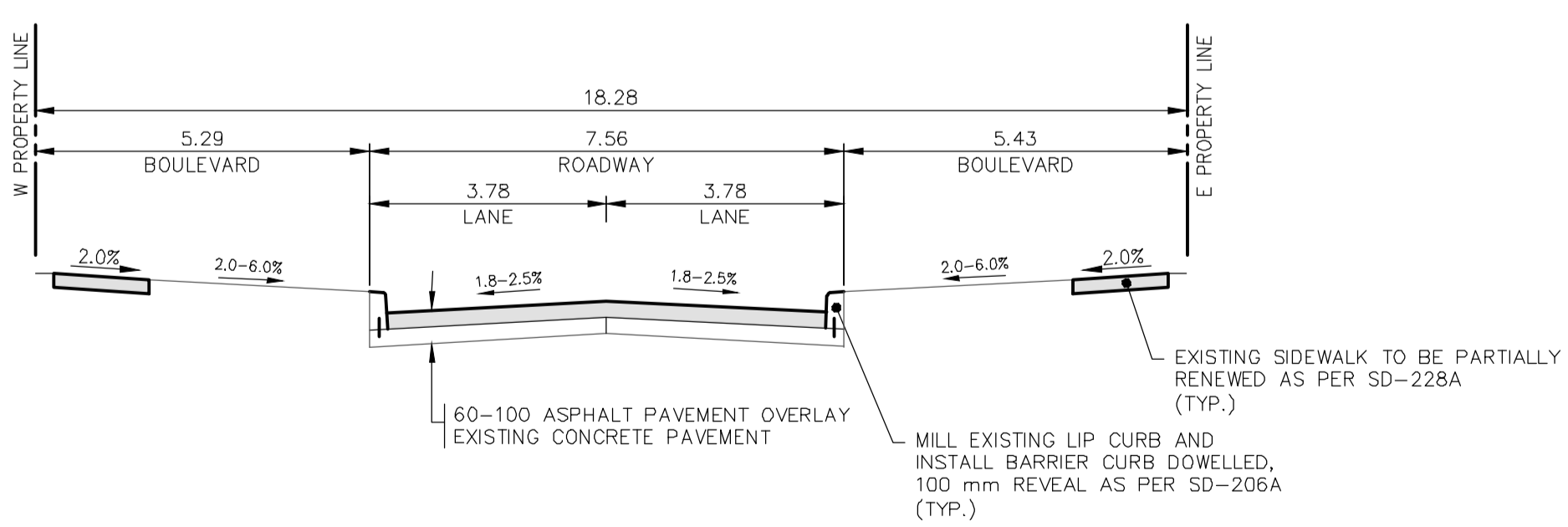


REFER TO DWG 18M-01969-00-16 FOR LODGE AVENUE REHABILITATION DRAWING



REFER TO DWG 18M-01969-00-16 FOR LODGE AVENUE REHABILITATION DRAWING

- NOTES:
- ALL WORK AND MATERIALS TO BE IN ACCORDANCE WITH THE LATEST REVISION OF THE CITY OF WINNIPEG STANDARD CONSTRUCTION SPECIFICATIONS.
  - CONTRACTOR TO CONFIRM THE LOCATION OF ALL UTILITIES/SERVICES IN THE FIELD PRIOR TO CONSTRUCTION.
  - ALL ROADWAY DIMENSIONS SHOWN ARE TO BACK OF CURB.
  - PAVEMENT REPAIRS SHOWN ARE ONLY A REPRESENTATIVE APPROXIMATION OF THE TENDERED QUANTITIES.
  - RENEW CURB AND SIDEWALK AS IDENTIFIED BY CONTRACT ADMINISTRATOR.
  - ALL PRIVATE WALKWAYS TO BE ADJUSTED TO NEW SIDEWALK OR TOP OF CURB ELEVATION, AS DIRECTED BY THE CONTRACT ADMINISTRATOR.
  - MODIFIED BARRIER CURB TO BE CONSTRUCTED AT ALL INTERSECTION RADII AND BACK LANE RADII.
  - CONTRACTORS TO TAKE PRECAUTIONARY STEPS TO PROTECT EXISTING TREES WITHIN THE LIMITS OF CONSTRUCTION FROM DAMAGE FROM CONSTRUCTION ACTIVITIES AS OUTLINED IN THE SPECIFICATIONS.
  - LAMP STANDARDS, HYDRO POLES, AND ANCHORS THAT REQUIRE TEMPORARY SUPPORT, REMOVAL OR REPLACEMENT, TO BE DONE SO AT THE EXPENSE OF THE CONTRACTOR AS NECESSARY.
  - ALL BOULEVARDS TO BE SODDED UNLESS OTHERWISE NOTED.
  - TRAFFIC SERVICES TO PAINT TRAFFIC LINES AND BICYCLE LANE MARKINGS (IF REQ'D).
  - CONTRACTOR TO CONFIRM LOCATION AND LIMITS OF SEWER REPAIRS BY PERFORMING VIDEO INSPECTION AND REVIEWING WITH CONTRACT ADMINISTRATOR PRIOR TO CONSTRUCTION (IF REQ'D).



EXISTING	PROPOSED	EXISTING	PROPOSED	LEGEND-PLAN	PROPOSED	EXISTING	LEGEND-PROFILE	PROPOSED
---	---	---	---	WATER MAIN	---	---	---	---
---	---	---	---	LAND DRAINAGE SEWER	---	---	---	---
---	---	---	---	WASTE WATER SEWER	---	---	---	---
---	---	---	---	HYDRO	---	---	---	---
---	---	---	---	M.T.S.	---	---	---	---
---	---	---	---	GAS	---	---	---	---
---	---	---	---	SIGNALS	---	---	---	---
○	○	○	○	MANHOLE	○	○	○	○
□	□	□	□	CATCH BASIN	□	□	□	□
△	△	△	△	CURB INLET	△	△	△	△
△ □ ○	△ □ ○	△ □ ○	△ □ ○	UTILITIES ADJUSTED	△ □ ○	△ □ ○	△ □ ○	△ □ ○
┘	┘	┘	┘	PLUG	┘	┘	┘	┘
◆	◆	◆	◆	HYDRANT	◆	◆	◆	◆
⊗	⊗	⊗	⊗	VALVE	⊗	⊗	⊗	⊗
⊙	⊙	⊙	⊙	CURB STOP	⊙	⊙	⊙	⊙
230.99	230.99	230.99	230.99	GROUND GRADE	230.99	230.99	230.99	230.99
(231.000)	(231.000)	(231.000)	(231.000)	PAVEMENT GRADE	(231.000)	(231.000)	(231.000)	(231.000)
—	—	—	—	ANCHOR	—	—	—	—
#111	#111	#111	#111	CIVIC ADDRESS	#111	#111	#111	#111
---	---	---	---	LEGEND-PLAN	---	---	---	---
---	---	---	---	LEGEND-PROFILE	---	---	---	---

LOCATIONS APPROVED UNDERGROUND STRUCTURES

SIGNED BY: \_\_\_\_\_ DATE: \_\_\_\_\_

SUPV U/G STRUCTURES

LOCATION OF UNDERGROUND STRUCTURES AS SHOWN ARE BASED ON THE BEST INFORMATION AVAILABLE BUT NO GUARANTEE IS GIVEN THAT ALL EXISTING UTILITIES ARE SHOWN OR THAT THE GIVEN LOCATIONS ARE EXACT CONFIRMATION OF EXISTENCE AND EXACT LOCATION OF ALL SERVICES MUST BE OBTAINED FROM THE INDIVIDUAL UTILITIES BEFORE PROCEEDING

G.R.M. BENCHMARK LOCATION: TOP OF TOP NUT ON HYDRANT AT SOUTHEAST CORNER OF AINSLIE STREET AND LODGE AVENUE  
ELEV. 237.923

H	-	-	-
G	-	-	-
F	-	-	-
E	-	-	-
D	-	-	-
C	-	-	-
B	ISSUED FOR TENDER	20190502	R.H.
A	DETAILED DESIGN REVIEW	20190329	K.G.
A	PRELIMINARY DESIGN REVIEW	20190211	R.H.
NO.	REVISIONS	DATE	BY

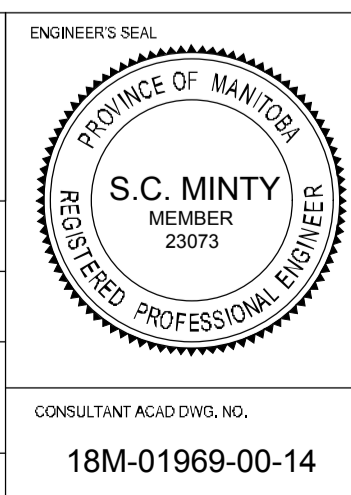
DESIGNED BY: R.H./K.G. CHECKED BY: V.M.

DRAWN BY: R.H./K.G. APPROVED BY: S.M.

HOR. SCALE: 1:250  
VERTICAL: 1:10

RELEASED FOR CONSTRUCTION

DATE: JANUARY 2019



FOR TENDER PURPOSES ONLY  
NOT FOR CONSTRUCTION

**ENGINEERS GEOSCIENTISTS MANITOBA**  
Certificate of Authorization  
WSP Canada Group Limited  
No. 6657

**THE CITY OF WINNIPEG**  
PUBLIC WORKS DEPARTMENT  
ENGINEERING SERVICES DIVISION

2019 STREET RENEWAL PROGRAM  
AINSIE STREET  
PAVEMENT REHABILITATION  
STA. 1+00 TO STA. 2+55

CITY DRAWING NUMBER: ---  
SHEET: 14 OF 14  
BID NO.: 60-2019

May 07, 2019 - 3:48pm  
 P:\2018\18M-01969-00 - 2019 Local Streets Package\19-R-R-03\Contract 2\10 Drawings\03 Working Drawings\18M-01969-00 Ainslie St Plan&Profile.dwg - tab:60-2019\_Drawing-18M-01969-00-14-RC-