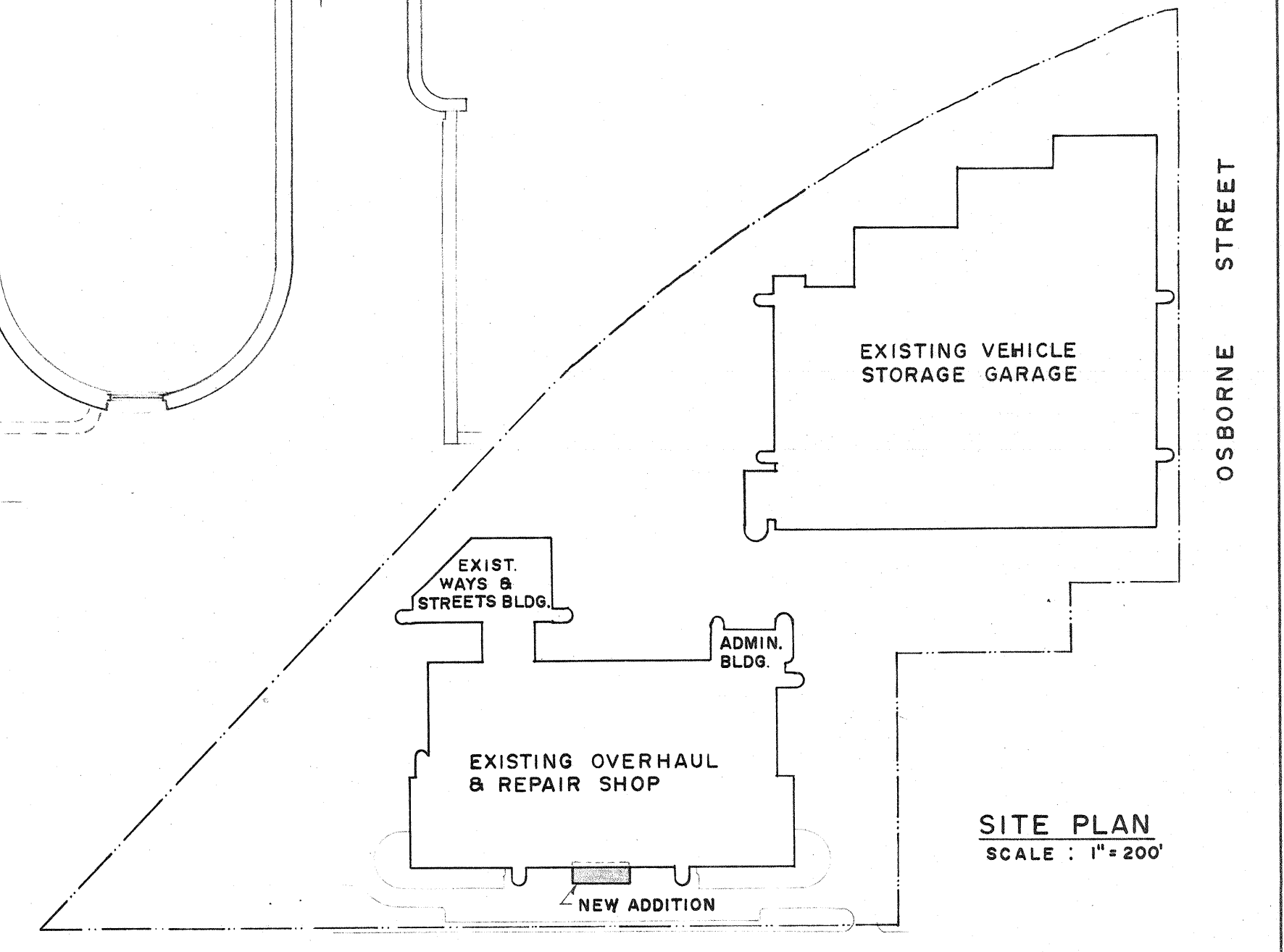
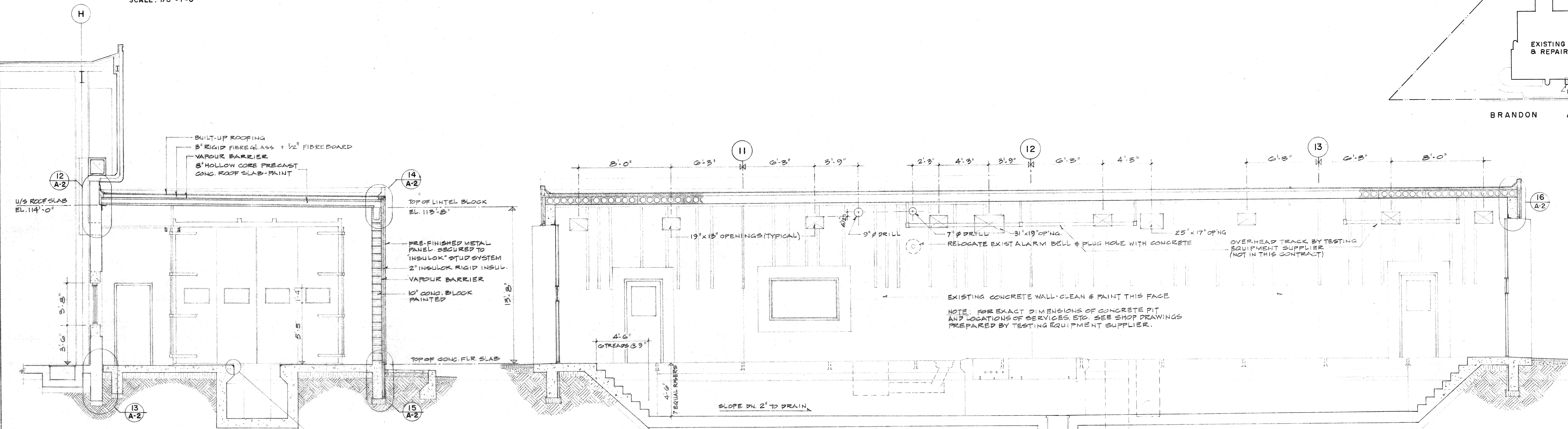


FLOOR PLAN
SCALE: 1/8" = 1'-0"

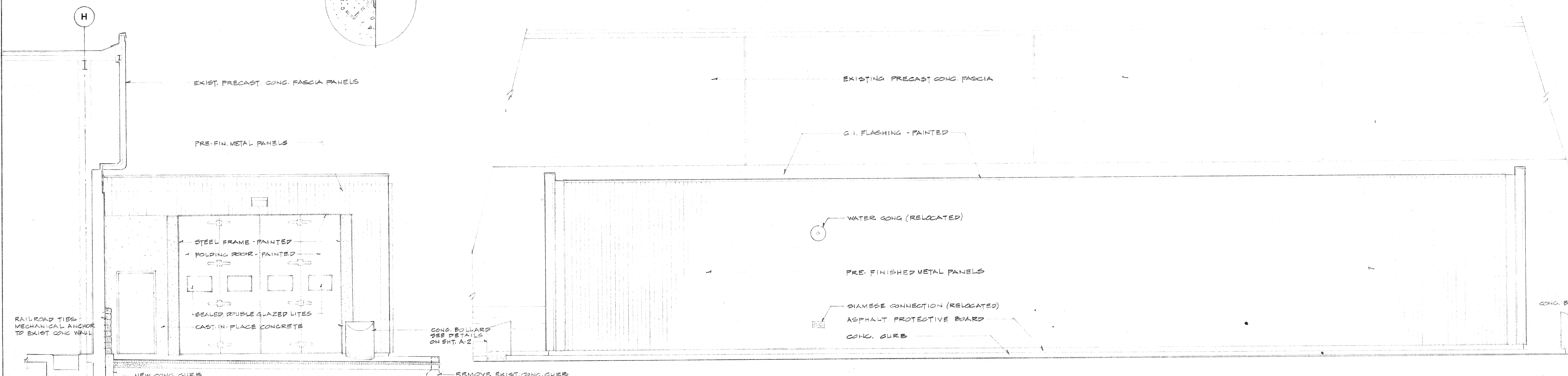


SITE PLAN
SCALE: 1" = 200'



1 CROSS SECTION
SCALE: 1/4" = 1'-0"

2 LONGITUDINAL SECTION
SCALE: 1/4" = 1'-0"



WEST ELEVATION EAST ELEV. SIM. BUT OPPOSITE HAND
SCALE: 1/4" = 1'-0"

SOUTH ELEVATION
SCALE: 1/4" = 1'-0"

DIRECTOR OF TRANSIT
DIRECTOR OF CIVIC PROPERTIES

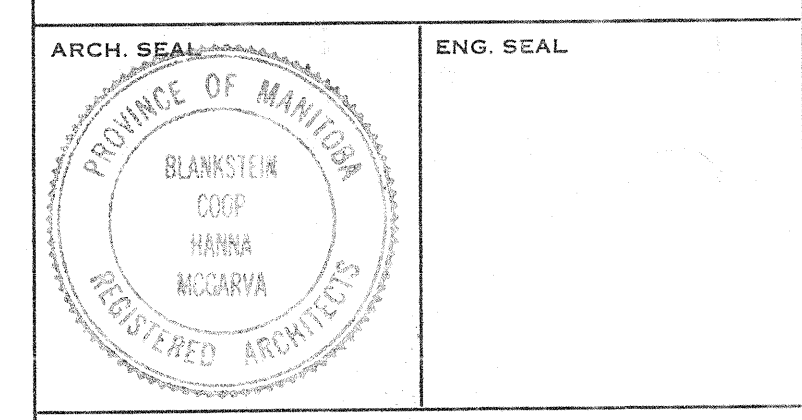
DATE	OR	REVISION

THIS DRAWING MUST NOT BE SCALED.
 * THE GENERAL CONTRACTOR SHALL VERIFY ALL DIMENSIONS, DATINGS AND LEVELS PRIOR TO COMMENCEMENT OF WORK. ALL ERRORS AND OMISSIONS TO BE REPORTED IMMEDIATELY TO THE ARCHITECT.
 * VARIATIONS & MODIFICATIONS TO WORK SHOWN ON THESE DRAWINGS SHALL NOT BE CARRIED OUT WITHOUT WRITTEN PERMISSION FROM THE ARCHITECT.
 * THIS DRAWING IS THE EXCLUSIVE PROPERTY OF THE ARCHITECTS AND CAN BE REPRODUCED ONLY WITH THE PERMISSION OF THE ARCHITECTS. IN WHICH CASE THE REPRODUCTION MUST BEAR THEIR NAME AS ARCHITECTS.

NUMBER TEN ARCHITECTURAL GROUP
ARCHITECTS AND PLANNERS
210-175 HARGRAVE ST., WINNIPEG, CANADA R2P 3B7 (204) 942-0981

ASSOCIATE ARCHITECT

CONSULTING ENGINEER



PROJECT
DYNAMOMETER FACILITY
ADDITION TO THE
OVERHAUL & REPAIR SHOP
CITY OF WINNIPEG TRANSIT
WINNIPEG MANITOBA

SHEET TITLE
PLANS, SECTIONS AND ELEVATIONS

DRAWN BY D.C.	DATE APR. 30, 1981	SHEET NO. A-1
CHECKED BY	PROJECT NO. 7742	FILE NO.

421 OSBORNE ST.
A-1
8/1/81
DYNAMOMETER FACILITY
PLANS, SECTIONS AND ELEVATIONS

BUILT DRAWINGS