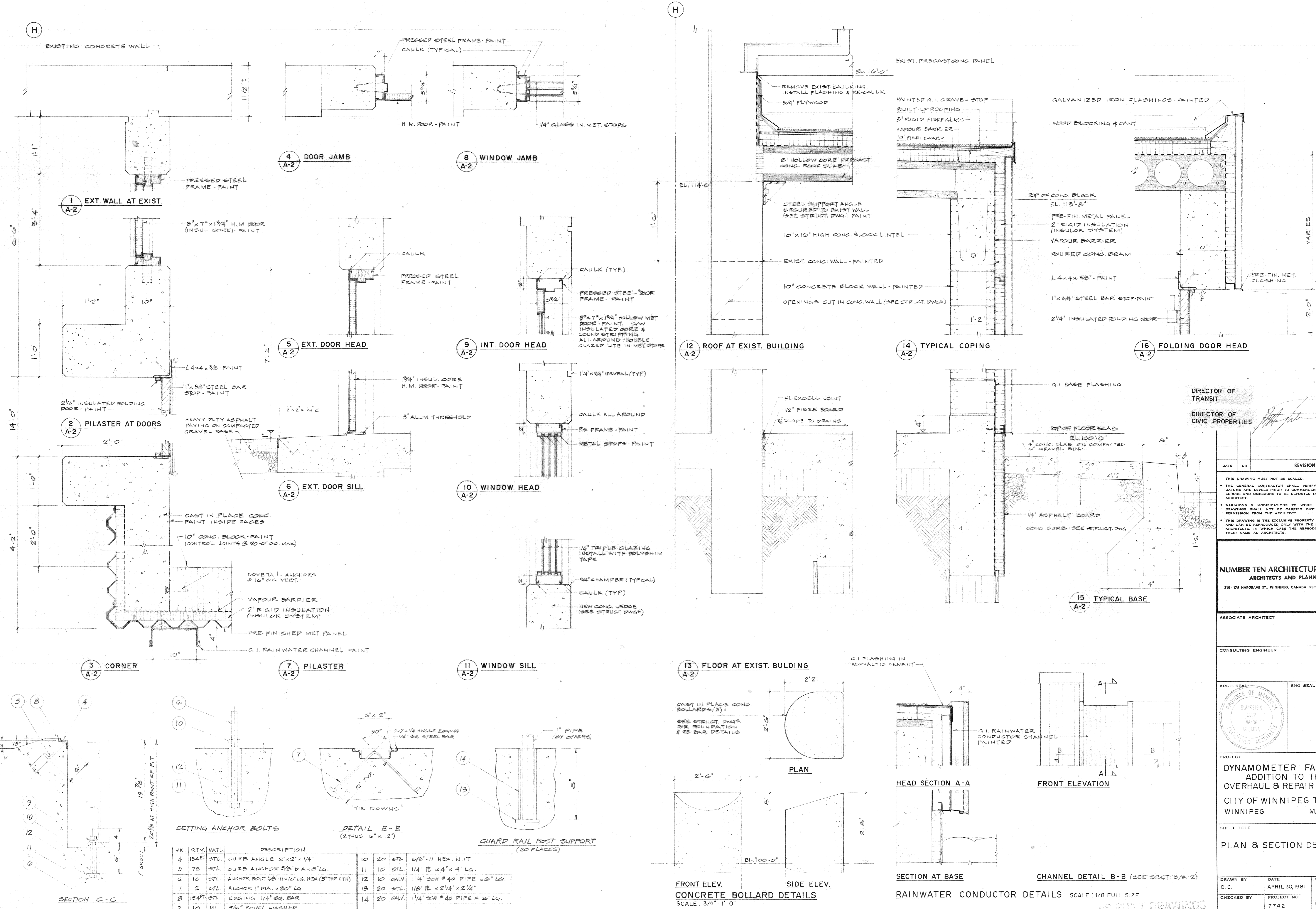


421 OSBORNE ST.
 80115
 DYNAMOMETER FACILITY
 PLAN AND SECTION DETAILS



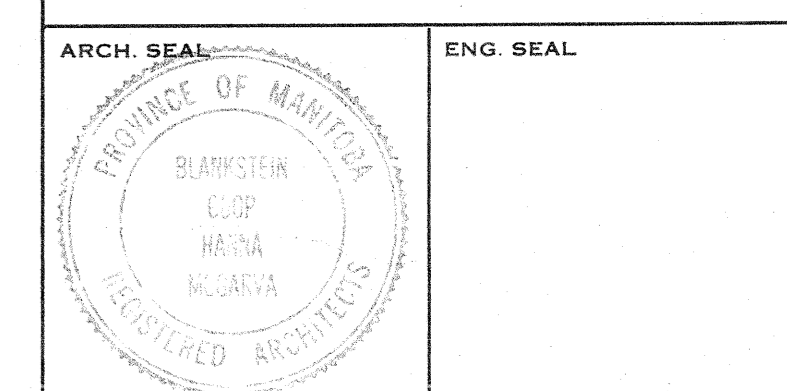
DIRECTOR OF TRANSIT
 DIRECTOR OF CIVIC PROPERTIES

DATE	DR	REVISION

THIS DRAWING MUST NOT BE SCALED.
 THE GENERAL CONTRACTOR SHALL VERIFY ALL DIMENSIONS, DATUMS AND LEVELS PRIOR TO COMMENCEMENT OF WORK. ALL ERRORS AND OMISSIONS TO BE REPORTED IMMEDIATELY TO THE ARCHITECT.
 VARIATIONS & MODIFICATIONS TO WORK SHOWN ON THESE DRAWINGS SHALL NOT BE CARRIED OUT WITHOUT WRITTEN PERMISSION FROM THE ARCHITECT.
 THIS DRAWING IS THE EXCLUSIVE PROPERTY OF THE ARCHITECTS AND CAN BE REPRODUCED ONLY WITH THE PERMISSION OF THE ARCHITECTS. IN WHICH CASE THE REPRODUCTION MUST BEAR THEIR NAME AS ARCHITECTS.

NUMBER TEN ARCHITECTURAL GROUP
 ARCHITECTS AND PLANNERS
 210-173 HARGRAVE ST., WINNIPEG, CANADA R3C 3P9 (204) 942-0981

ASSOCIATE ARCHITECT
 CONSULTING ENGINEER



PROJECT
 DYNAMOMETER FACILITY
 ADDITION TO THE
 OVERHAUL & REPAIR SHOP
 CITY OF WINNIPEG TRANSIT
 WINNIPEG MANITOBA

SHEET TITLE
 PLAN & SECTION DETAILS

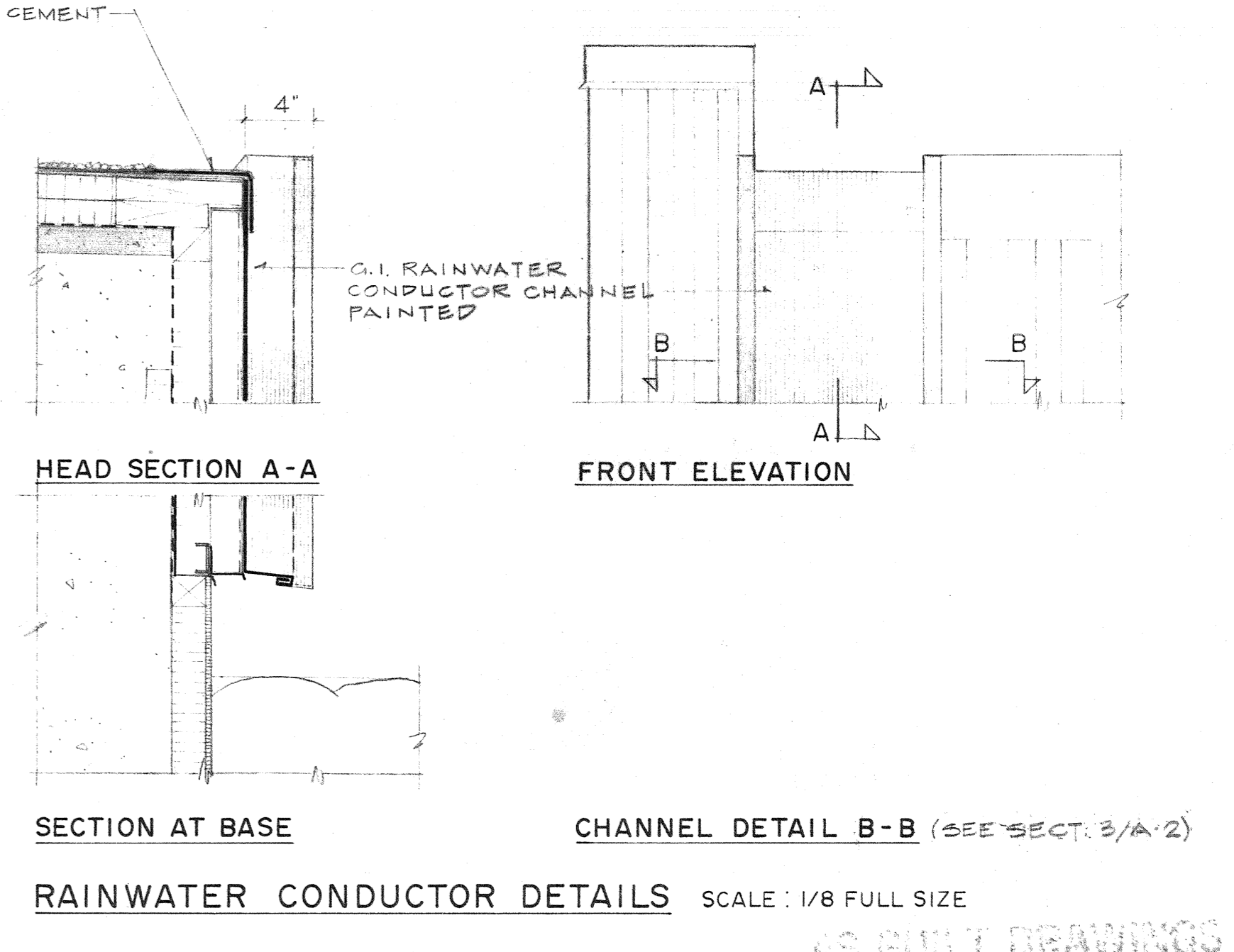
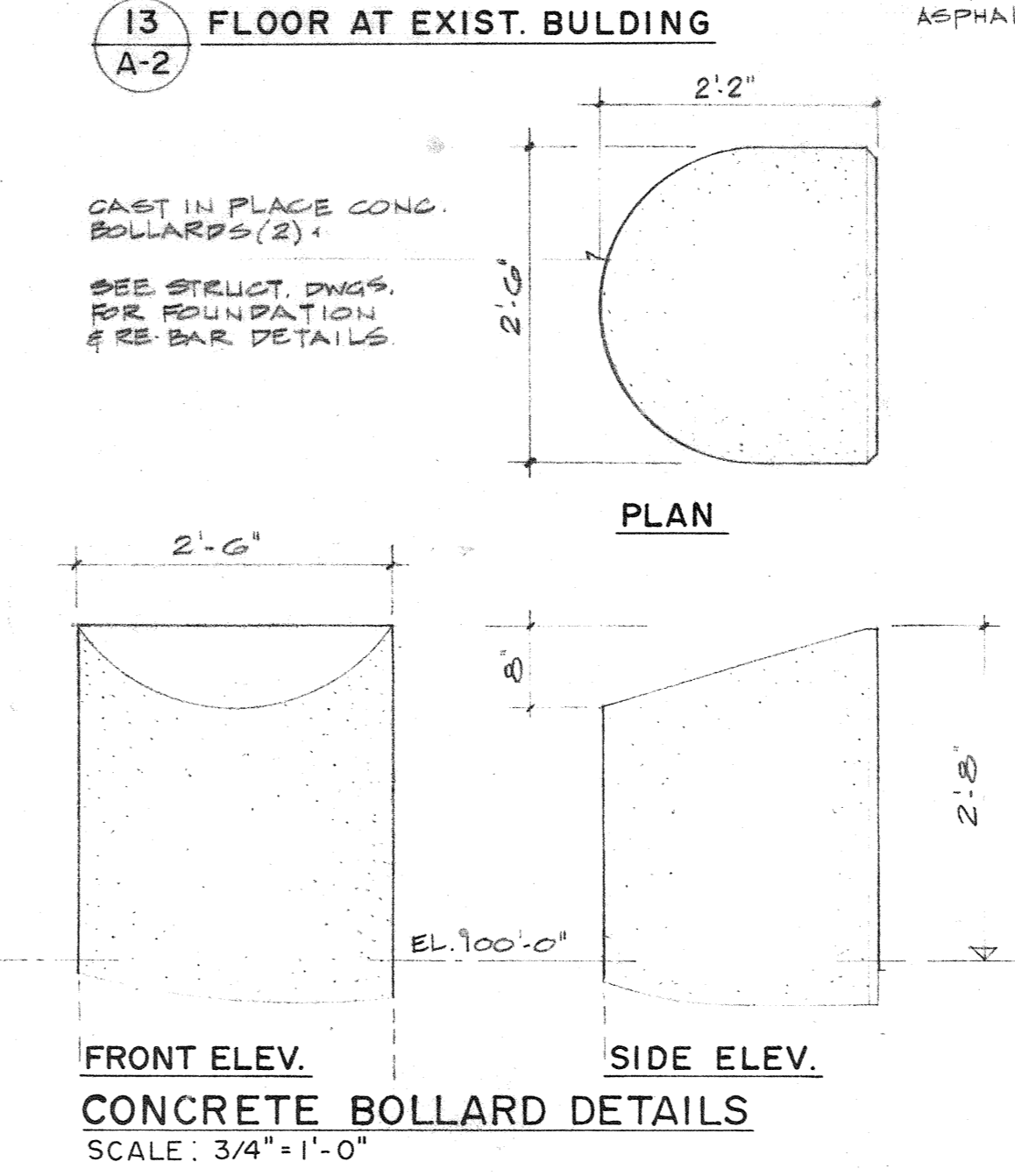
DRAWN BY D.C.	DATE APRIL 30, 1981	SHEET NO. A-2
CHECKED BY	PROJECT NO. 7.742	FILE NO.

SETTING ANCHOR BOLTS

NO.	QTY	MATL	DESCRIPTION	NO.	QTY	MATL	DESCRIPTION
4	154	STL	CURB ANGLE 2"x2"x1/4"	10	20	STL	5/8"-11 HEX. NUT
5	78	STL	CURB ANCHOR 3/8" DIA x 5" LG.	11	10	STL	1/4" x 24" x 4" LG.
6	10	STL	ANCHOR BOLT 3/8"-11x10" LG. HEX. (5" THD LTH)	12	10	GALV.	1 1/4" SCH #40 PIPE x 6" LG.
7	2	STL	ANCHOR 1" DIA. x 30" LG.	13	20	STL	1/8" x 2 1/4" x 2 1/4"
8	154	STL	EDGING 1/4" SQ. BAR	14	20	GALV.	1 1/4" SCH #40 PIPE x 6" LG.
9	10	MI.	5/8" LEVEL WASHER				

DETAIL E-E (2 THUS 6" x 12")

GUARD RAIL POST SUPPORT (20 PLACES)



AS BUILT DRAWINGS