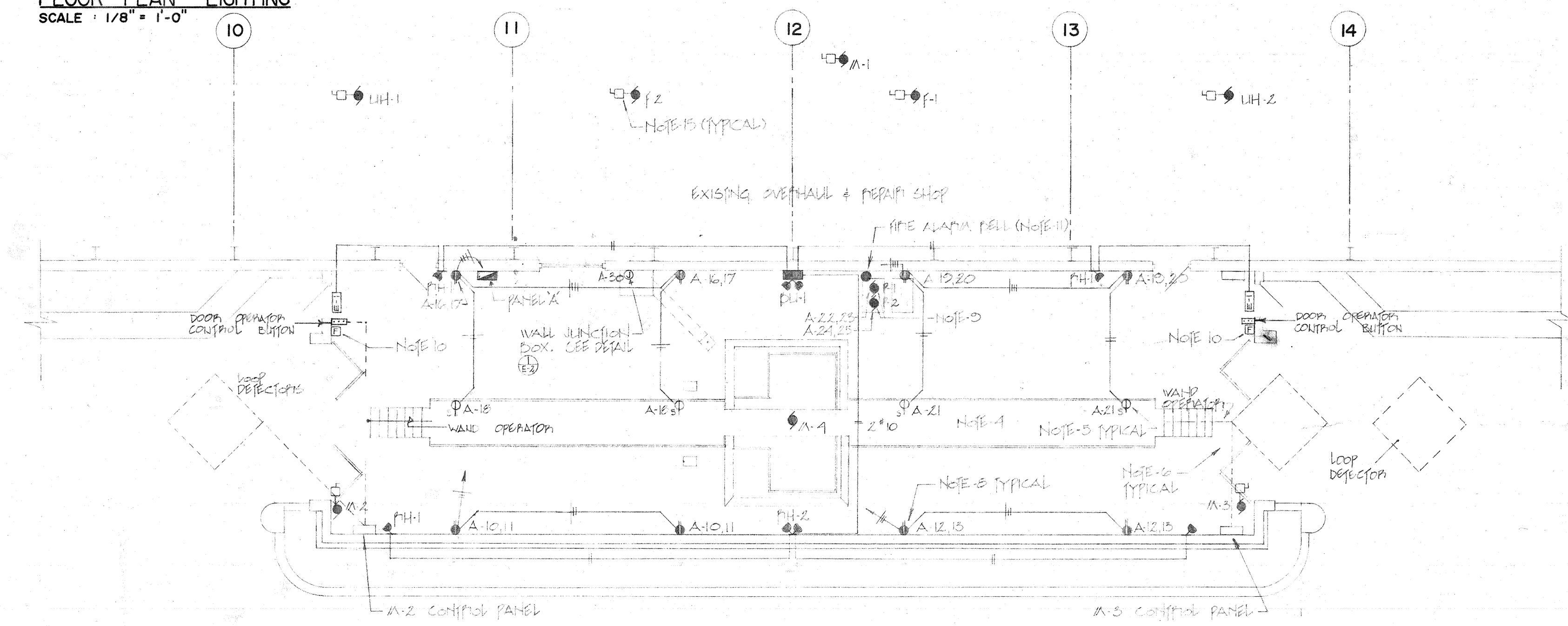
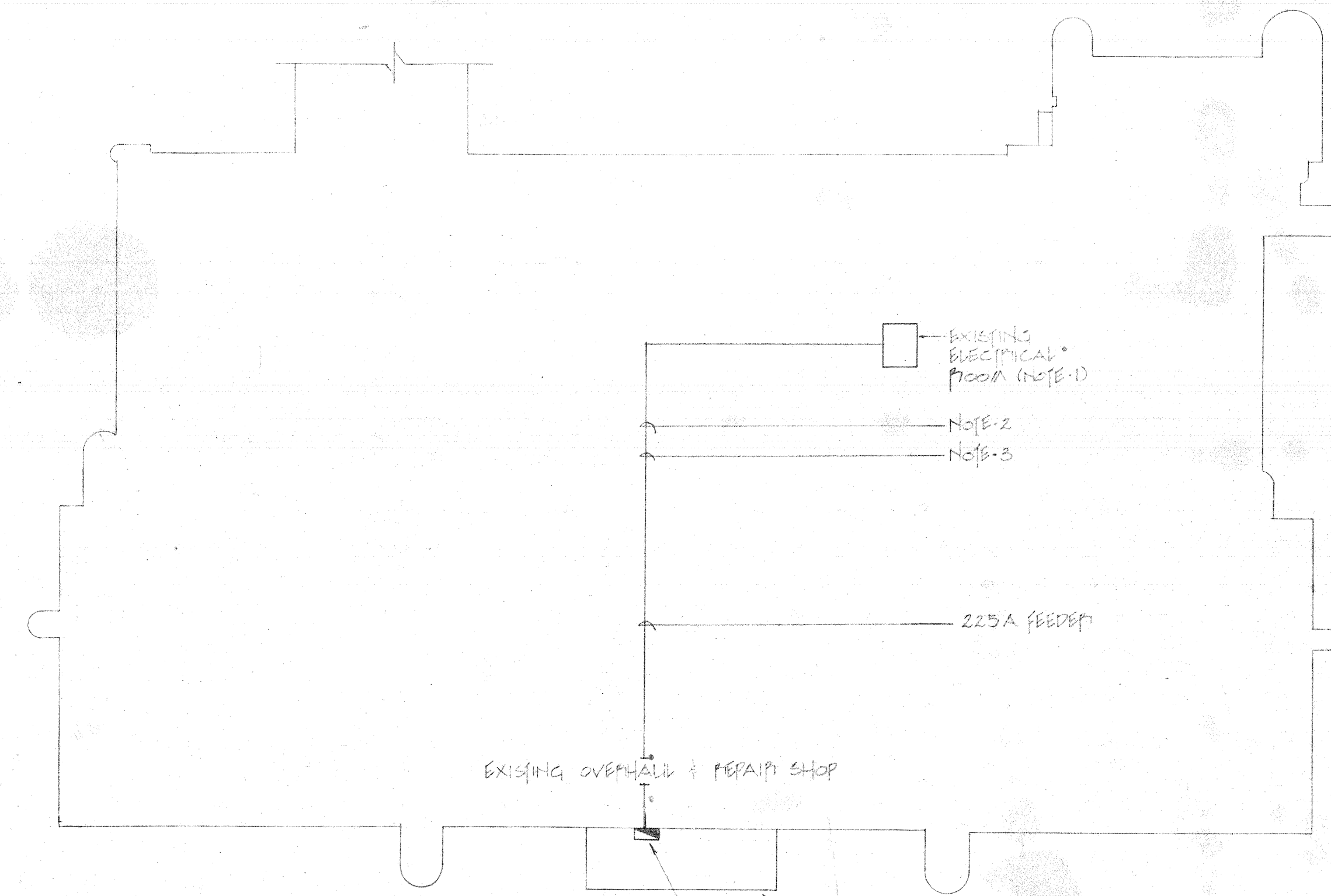


FLOOR PLAN - LIGHTING
SCALE: 1/8" = 1'-0"



FLOOR PLAN - POWER & SYSTEMS
SCALE: 1/8" = 1'-0"



PARTIAL SITE PLAN
SCALE: 1" = 50'-0"

- Notes:
1. PROVIDE A 225A-SP CIRCUIT BREAKER IN EXISTING DISTRIBUTION PANEL NO.1. CIRCUIT BREAKER TO MATCH EXISTING CIRCUIT BREAKERS IN DISTRIBUTION PANEL.
 2. INSTALL A #2 CIRCUIT CONDUCTOR IN CONDUIT.
 3. INSTALL CONDUIT ON FLOOR FINISH AS INDICATED BY THE ENGINEER AT THE SITE. HAVE ENGINEER APPROVED LOCATION OF CONDUIT RUN BETWEEN DISTRIBUTION PANELS.
 4. SERVICE PIT IS CLASS 1 DIVISION 2 HAZARDOUS AREA. HAZARDOUS AREA EXTENDS 2' ABOVE FLOOR LEVEL.
 5. MOUNT RECEPTACLES IN SERVICE PIT 5'-0" AS 5' FLOOR LEVEL.
 6. LOOP DETECTOR AND WARE OPERATION CONTROL SUPPLIED AND INSTALLED BY OTHERS, CONNECTED BY ELECTRICAL CONDUIT.
 7. PROVIDE A 150V SWITCH IN CIRCUIT A-15 TO CONTROL EXISTING LIGHTS. THIS SWITCH FROM CATALOGUE NO. 200022 40A DPST WITH ASYMPTOMATIC DIAL.
 8. MOUNT RECEPTACLES ON WALL 5'-0" ABOVE FLOOR.
 9. REFER TO MOUNTING APPROPRIATELY SHOWN ON DETAIL. INSTALL CONDUCTORS & DRAINAGE TUBES FOR DIAPHRAGM SWITCH IN CONDUIT TO PUMP IN ACCORDANCE WITH MANUFACTURER'S INSTRUCTIONS.
 10. CONNECT FIRE ALARM MANUAL STATIONS TO EXISTING FIRE ALARM CONTROL PANEL.
 11. CONNECT FIRE ALARM BELL TO NEAREST FIRE ALARM BELL CIRCUIT IN OVERHAUL & REPAIR SHOP.
 12. MOUNT PNE CONTROL FOR EXISTING LIGHTS AS NOTED TO PANEL A.
 13. SPACERS SHOULD NOT BE LESS THAN 6" LONG. SPACE SPACERS UNIFORMLY ALONG PROTECT.
 14. TYPE AND TRANSFORMER IS FVA 600-100/200V 50 AMP WITH 4:1 RATIO. TAP 250V AND 250V 3 WIRE CENTER TAP. TAP PILE IS 5' ABOVE 40% VENTILATED ENCLOSURE.
 15. ACTION DISCONNECT SWITCH IS MANUAL ACTION STARTER WITHOUT OVERLOAD PROTECTION. RATED TO 10 H.P. & 600 VOLTS.

DIRECTOR OF TRANSIT
DIRECTOR OF CIVIC PROPERTIES

DATE	DR	REVISION
AD	DR	JUN 13/82

THIS DRAWING MUST NOT BE SCALED.
 * THE GENERAL CONTRACTOR SHALL VERIFY ALL DIMENSIONS, DATUMS AND LEVELS PRIOR TO COMMENCEMENT OF WORK. ALL ERRORS AND OMISSIONS TO BE REPORTED IMMEDIATELY TO THE ARCHITECT.
 * VARIATIONS & MODIFICATIONS TO WORK SHOWN ON THESE DRAWINGS SHALL NOT BE CARRIED OUT WITHOUT WRITTEN PERMISSION FROM THE ARCHITECT.
 * THIS DRAWING IS THE EXCLUSIVE PROPERTY OF THE ARCHITECTS AND CAN BE REPRODUCED ONLY WITH THE PERMISSION OF THE ARCHITECTS, IN WHICH CASE THE REPRODUCTION MUST BEAR THEIR NAME AS ARCHITECTS.

NUMBER TEN ARCHITECTURAL GROUP
 ARCHITECTS AND PLANNERS
 210-175 HARGRAVE ST., WINNIPEG, CANADA R3C 3R9 (204) 948-0981

ASSOCIATE ARCHITECT
 CONSULTING ENGINEER
a.e.b. engineering group
 consulting electrical engineers
 400 - 175 hargrave street, wpg., man.
 R3C 3R9 944-9242

ARCH. SEAL
 ENG. SEAL

PROJECT
DYNAMOMETER FACILITY
 ADDITION TO THE
 OVERHAUL & REPAIR SHOP
 CITY OF WINNIPEG TRANSIT
 WINNIPEG MANITOBA

SHEET TITLE
**FLOOR PLANS - LIGHTING,
 POWER AND SYSTEMS,
 SCHEDULES AND DETAILS**

DRAWN BY	DATE	SHEET NO.
M.F.P.	APRIL 30, 1981	E-1
CHECKED BY	PROJECT NO.	FILE NO.
H.A.M.	7742	810

LUMINAIRE SCHEDULE					
TYPE	MANUFACTURER	CATALOGUE NO.	LAMPS	REMARKS	
1	BYVANIA	HCF-70-20C	2000VARS	MOUNT 1/2" ABOVE FLOOR ON CONDUIT STRAP HANGERS	
2	"	HL 50-20-14	120VARS	MOUNT ABOVE SHOP WITH WYMAN GUARD - FIRE CONTROL	
3	CHOICE-HARD	80W-10C	600VARS	REPAIR SHOP HAND LAMP - SEE SPECIFICATIONS	
E-1	EMERGENCY-LITE	EXH-W-EM-2	2000W	PROVIDE 1/2" VOLT DC EMERGENCY LAMP	
PH-1	"	RE-ESL-144	250WATT	"	
PH-1	"	EF-18	50WATT	SHADE REFRACT	
PH-2	"	EF-18D	75WATT	SHADE REFRACT	

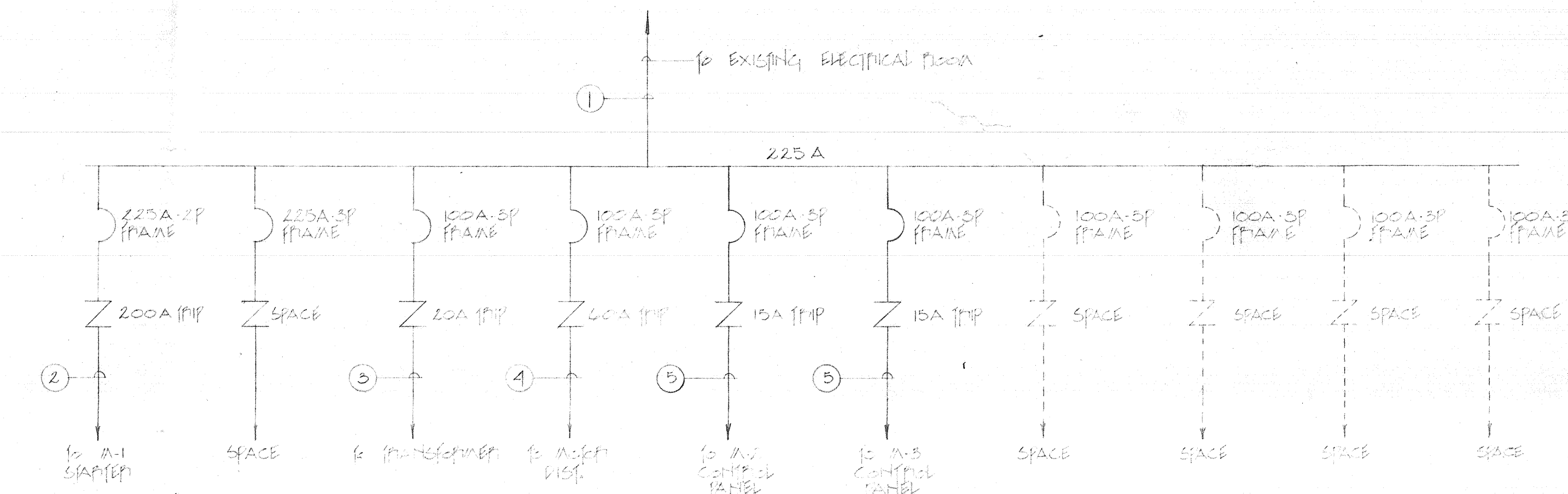
FEEDER SCHEDULE		
NO.	SIZE	TYPE
1	3 # 1/2" - 21/2" C	#2 CIRCUIT CONDUCTOR
2	5 # 1" - 2 1/2" C	"
3	5 # 1" - 3 1/2" C	"
4	5 # 1" - 1 1/2" C	"
5	5 # 1/2" - 1 1/2" C	"
6	2 # 2" - 1" C	"

MOTOR SCHEDULE						
MOTOR NO.	DESCRIPTION	STARTER	H.P.	VOLTS	COND.	REMARKS
A-1	AP VARIATOR UNIT	SIZE 1 FVFD	3/4 H.P.	600V/3		CONNECT TO MAIN CONTROL PANEL INTERLOCK WITH FIRE AL
F-1	CRS EXHAUST	"	3/4 HP	600V/3		INTERLOCK WITH A-1
F-2	CRS EXHAUST	"	3/4 HP	600V/3		INTERLOCK WITH A-1
UH-1	UNIT HEATER	MANUAL	1/2 H.P.	240V/1P		INTERLOCK
UH-2	UNIT HEATER	"	1/2 H.P.	240V/1P		INTERLOCK
U-1	SLURRY PUMP	MANUAL	1/2 HP	208V/1P		DIAPHRAGM SWITCH & HIGH WATER ALARM
U-2	SLURRY PUMP	"	1/2 HP	208V/1P		"
A-4	DYNAMOMETER	400 3 PHV	100 H.P.	600V/3		SEE SPECIFICATIONS
A-2	SHOP MOTOR	200 3 PHV	1 HP	600V/3		WIRE TO CONTROL PANEL & MOTOR NOTE 6
A-3	SHOP MOTOR	200 3 PHV	1 HP	600V/3		NOTE 6

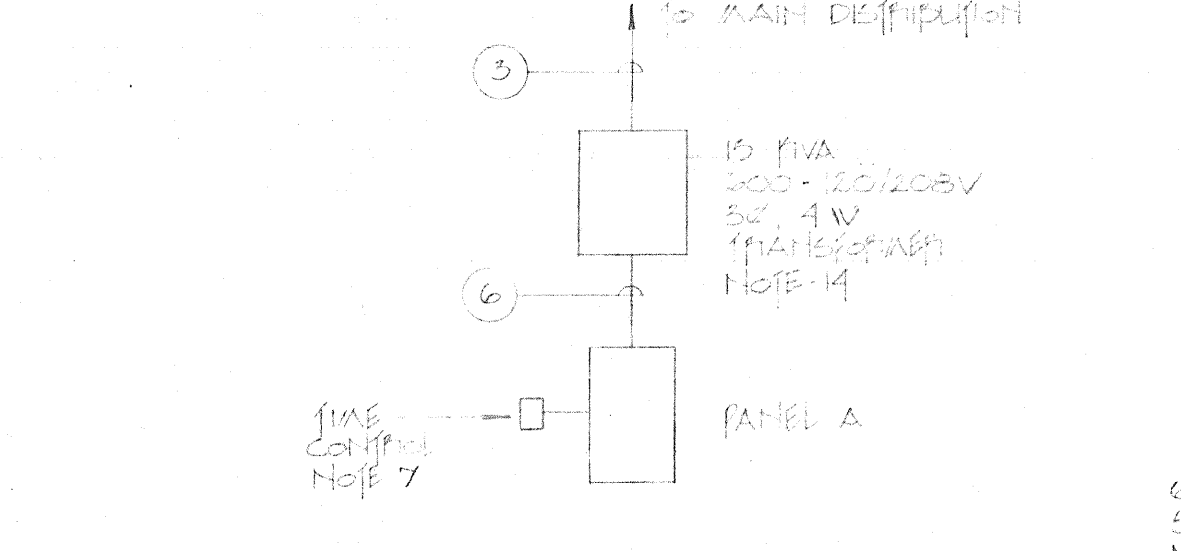
STARTERS:
 UH-1 WITH 1/2" HSA REFRACT SWITCH AND 100' FEET RUN LIGHT
 UH-2 WITH 100' FEET RUN AND 300' FEET RUN LIGHT

LIGHTING			
NO.	TYPE	LOCATION	REMARKS
1	18"	RECEPTACLE	2.0
2	17"	"	2.0
3	18"	"	2.0
4	18"	RECEPTACLE	2.0
5	20"	"	2.0
6	20"	"	2.0
7	22"	PT SLURRY PUMP	2.0
8	23"	INTERLOCK	"
9	24"	PT SLURRY PUMP	"
10	25"	"	"
11	26"	UH-1	"
12	27"	UH-2	"
13	28"	UH-2	"
14	29"	"	"
15	30"	WALL JUNCTION BOX	"

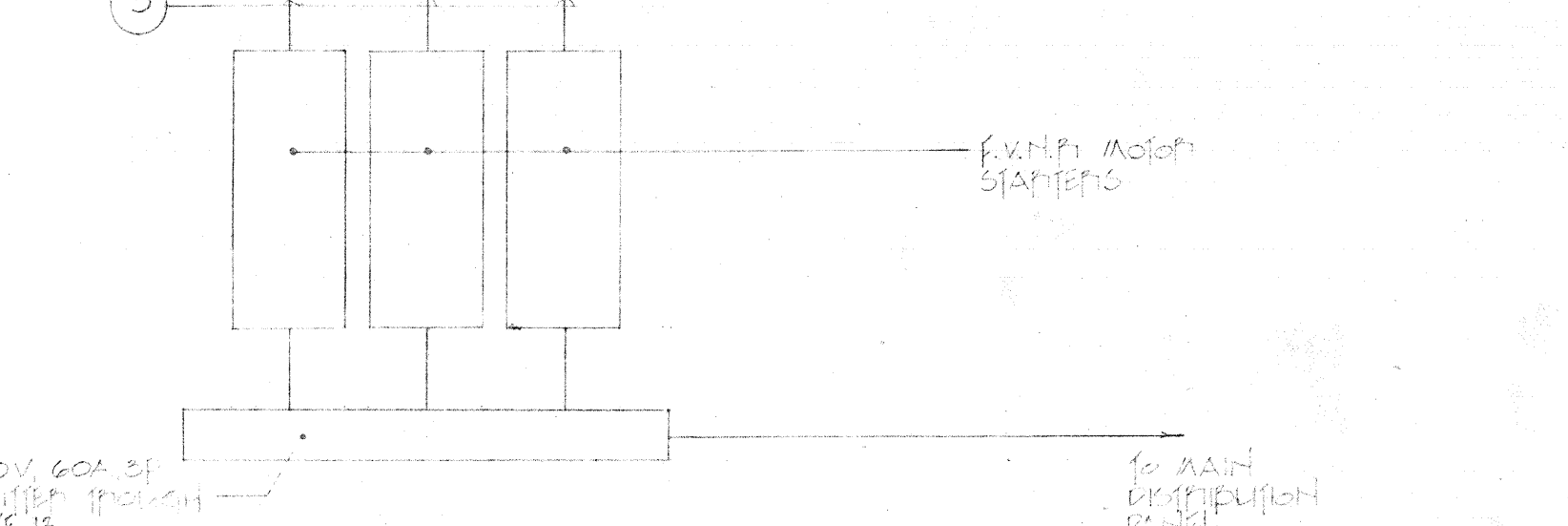
PANEL 'A'
 120/208V, 30, 4W
 225A MAINS
 ALL CIRCUITS PROVIDED TO BE 2P 2P OR 3P AS INDICATED
 SPECIFICATIONS CATALOGUE NO. 200022 & 241 V



MAIN DISTRIBUTION PANEL 600V, 30, 3W, 225A MAINS
 NOT TO SCALE



DETAIL SHOWING CONNECTION OF TRANSFORMER TO PANEL 'A'
 NOT TO SCALE



MOTOR DISTRIBUTION - 600V, 30, 3W, 60A
 NOT TO SCALE

421 OSBORNE ST
 80 115
 PROJECT NO.
 DYNAMOMETER FACILITY
 POWER AND SYSTEMS, LIGHTING, POWER AND
 SYSTEMS, SCHEDULES AND DETAILS