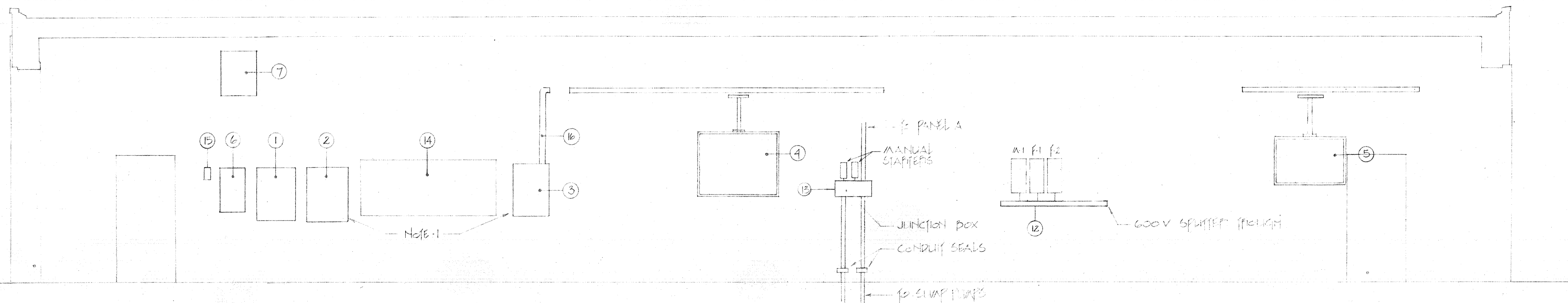
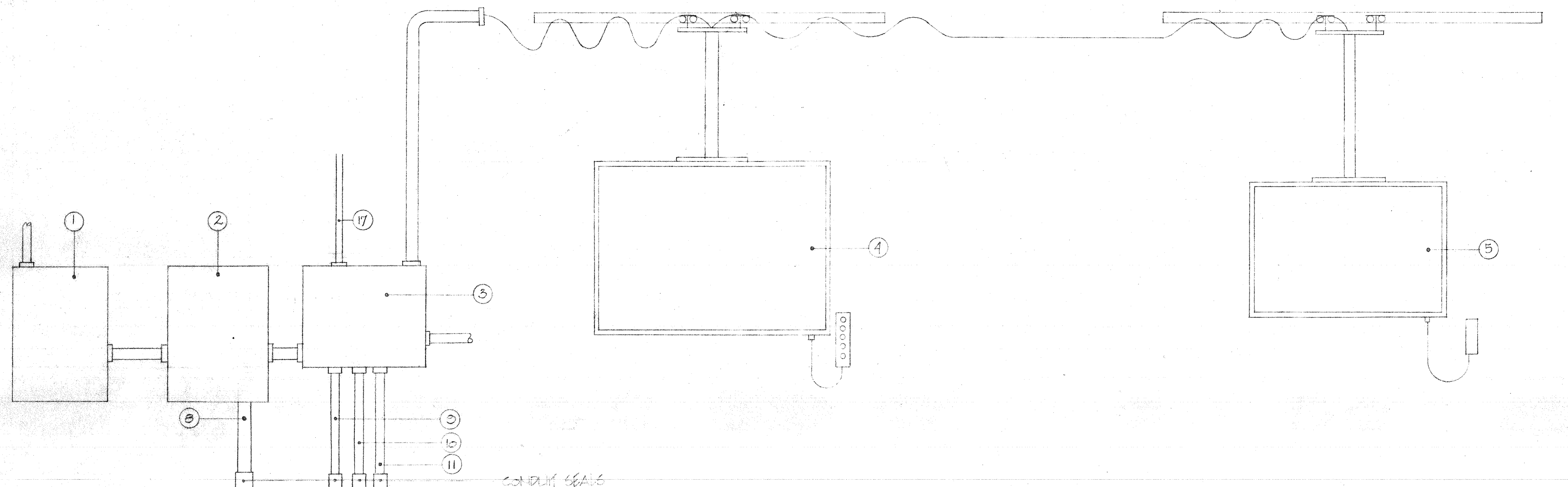


ELECTRICAL LEGEND	
⓪	FLUORESCENT FIXTURE ('Y' DENOTES TYPE)
⓪	MISC. FIXTURE
⓪	EXIT LIGHT FIXTURE ('Y' DENOTES EXIT FIXTURE TYPE)
⓪	EMERGENCY LIGHT FIXTURE
⓪	EMERGENCY BATTERY BANK WITH SHELF
⓪	SPLIT WIRE RECEPTACLE
⓪	SPECIAL RECEPTACLE SEE SPECIFICATIONS
⓪	JUNCTION BOX
⓪	SINGLE POLE SWITCH
⓪	3-WAY SWITCH
⓪	MOTOR OUTLET
⓪	FIRE ALARM BELL
⓪	FIRE ALARM MANUAL PULL STATION
⓪	ELECTRIC PANELBOARD
⓪	CONTROL PANEL
⓪	TIME CONTROL
⓪	DISCONNECT SWITCH FOR MOTORS

Notes
 1. RACE CONDUIT FROM MOTOR STARTER TO WALL JUNCTION BOX BETWEEN 8" CO EXHAUST DUCT & WALL.

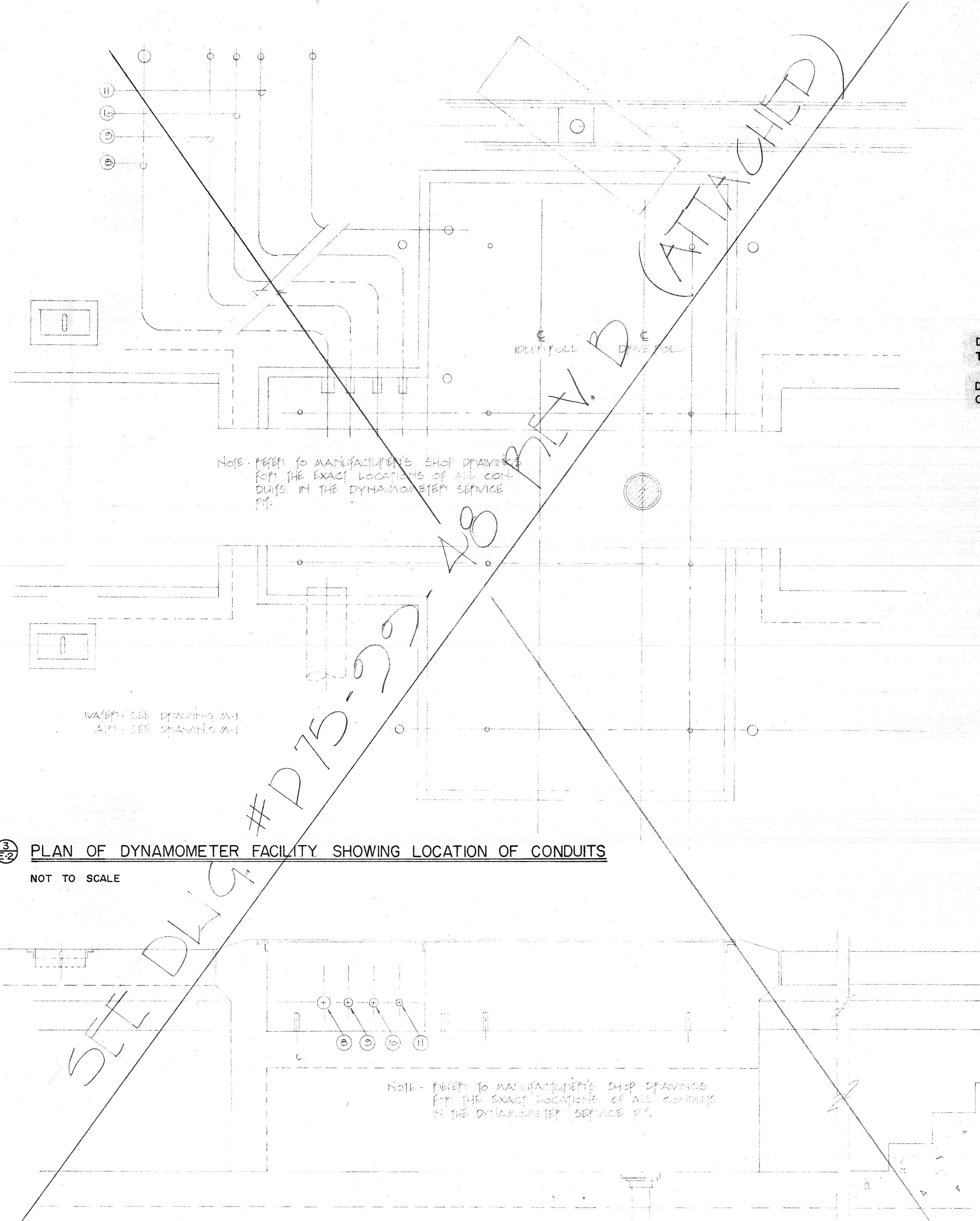


1 ELEVATION SHOWING APPROXIMATE LOCATION OF EQUIPMENT
 SCALE: 1/4" = 1'-0"



2 SCHEMATIC DIAGRAM SHOWING APPROXIMATE LOCATION OF EQUIPMENT
 NOT TO SCALE

1. MAIN DISTRIBUTION PANEL
 2. MOTOR STARTER FOR DYNAMOMETER
 3. WALL DISTRIBUTION BOX (MISC.)
 4. MASTER CONTROL PANEL
 5. JUNCTION BOX
 6. PANEL A
 7. TRANSFORMER
 8. 240V AC CONDUIT TO DYNAMOMETER
 9. 120V AC CONDUIT TO DYNAMOMETER
 10. 120V AC CONDUIT TO DYNAMOMETER
 11. 1" AP CONDUIT
 12. MOTOR DISTRIBUTION
 13. CONDUIT RUN
 14. CONDUIT RUN
 15. TIME CONTROL
 16. 2" CONDUIT CABLE CONDUIT AS REQUIRED
 17. 1" POWER CONDUIT CONDUIT TO RACE DUCT
- N.B. NOT IN CONTRACT



3 PLAN OF DYNAMOMETER FACILITY SHOWING LOCATION OF CONDUITS
 NOT TO SCALE

4 ELEVATION OF DYNAMOMETER FACILITY SHOWING LOCATION OF CONDUITS
 NOT TO SCALE

DIRECTOR OF TRANSIT
 DIRECTOR OF CIVIC PROPERTIES

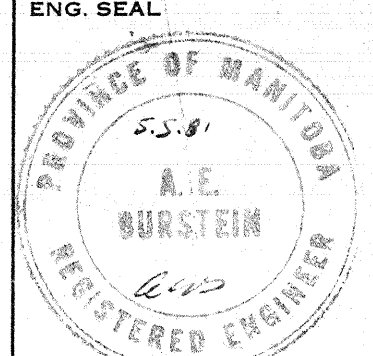
DATE	AS BUILT JUNE 5/82
REVISION	

THIS DRAWING MUST NOT BE SCALED.
 THE GENERAL CONTRACTOR SHALL VERIFY ALL DIMENSIONS, DATUMS AND LEVELS PRIOR TO COMMENCEMENT OF WORK. ALL ERRORS AND OMISSIONS TO BE REPORTED IMMEDIATELY TO THE ARCHITECT.
 VARIATIONS & MODIFICATIONS TO WORK SHOWN ON THESE DRAWINGS SHALL NOT BE CARRIED OUT WITHOUT WRITTEN PERMISSION FROM THE ARCHITECT.
 THIS DRAWING IS THE EXCLUSIVE PROPERTY OF THE ARCHITECTS AND CAN BE REPRODUCED ONLY WITH THE PERMISSION OF THE ARCHITECTS, IN WHICH CASE THE REPRODUCTION MUST BEAR THEIR NAME AS ARCHITECTS.

NUMBER TEN ARCHITECTURAL GROUP
 ARCHITECTS AND PLANNERS
 310 - 175 HARGRAVE ST., WINNIPEG, CANADA R3C 3B9 (504) 942-0981

ASSOCIATE ARCHITECT

CONSULTING ENGINEER
a.e.b. engineering group
 consulting electrical engineers
 400 - 175 HARGRAVE STREET, WPG., MAN., R3C 3B9 944-9242



PROJECT
DYNAMOMETER FACILITY ADDITION TO THE OVERHAUL & REPAIR SHOP CITY OF WINNIPEG TRANSIT WINNIPEG MANITOBA

SHEET TITLE
DYNAMOMETER & ELECTRICAL EQUIPMENT SCHEMATIC DIAGRAMS

DRAWN BY M. F. P.	DATE APRIL 30, 1981	SHEET NO. E-2
CHECKED BY H. A. M.	PROJECT NO. 7742	FILE NO. 810

421 OSBORN ST.
 E-L
 PROJECT NO.
 DYNAMOMETER FACILITY
 DYNAMOMETER AND ELECTRICAL EQUIPMENT SCHEMATIC DIAGRAMS